


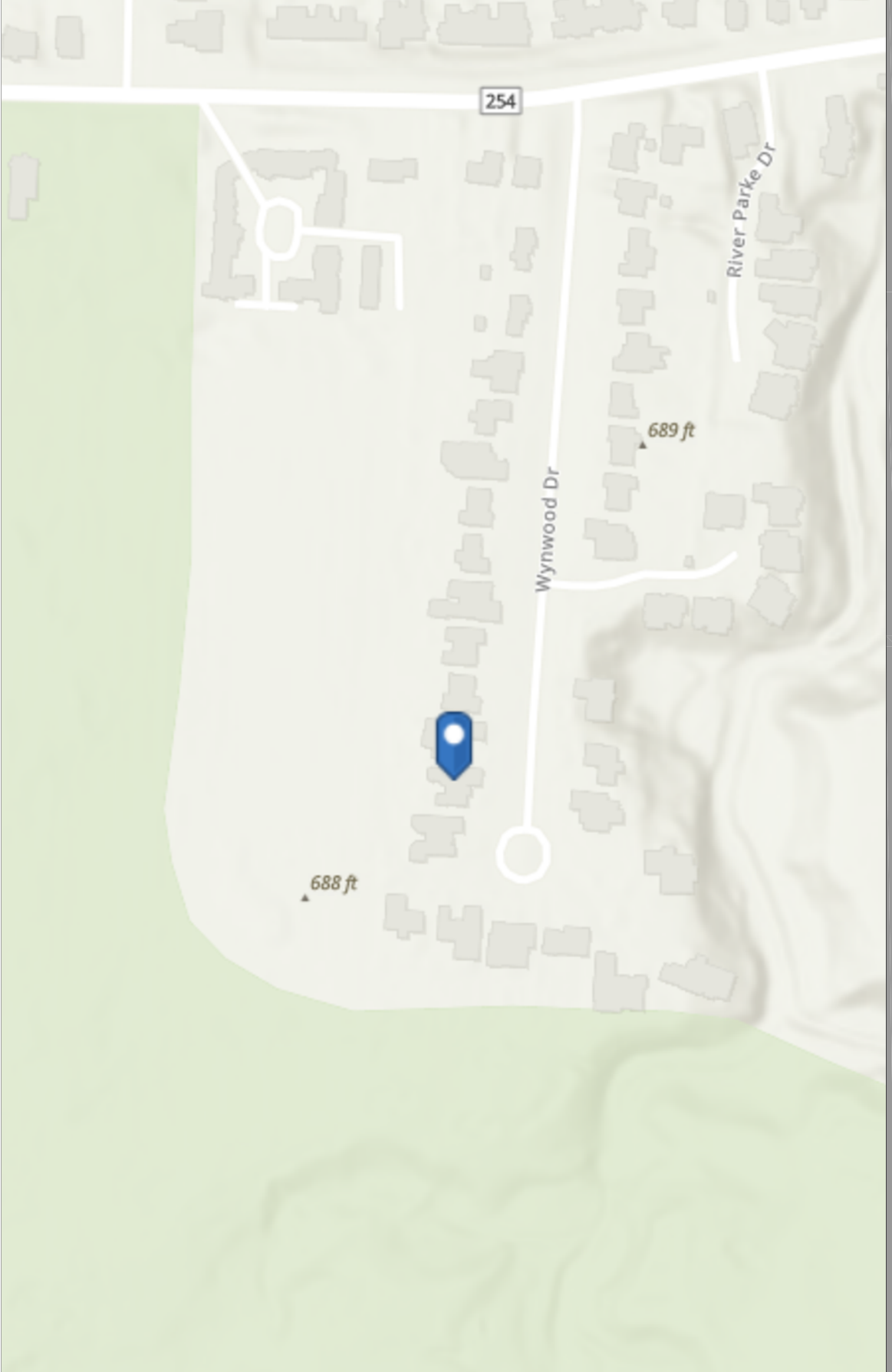
Schlosser Residence

1960 WYNWOOD DRIVE
ROCKY RIVER, OH 44116




QR CODE
DIRECTIONS

PROJECT LOCATION



Esri Community Maps Contributors, Cuyahoga County



QR CODE
DRAWINGS

DRAWING INDEX

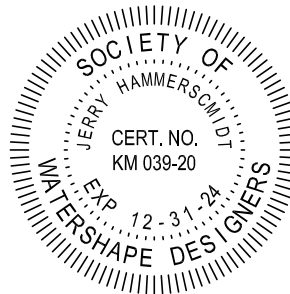
QR CODE
PERMITS:

NUMBER	TITLE
AQ-TS	TITLE SHEET
AQ-101	SITE PLAN
AQ-110	POOL - LAYOUT PLAN
AQ -111	POOL - DIMENSIONING PLAN
AQ-112	POOL - SECTIONS
AQ-200	AQUATIC STRUCTURAL DETAILS
AQ-311	POOL - PLUMBING
AQ-400	AQUATIC MECHANICAL DETAILS
AQ-415	POOL - AUTOMATIC COVER
AQ-500	AQUATIC UTILITY REQUIREMENTS
AQ-600	AQUATIC BONDING DETAILS

MASTER POOLS by
high-tech pools inc.
31330 Industrial Parkway
Cleveland, Ohio 44070
(440) 979-5070
(440) 979-5076-fax



MASTER POOLS by
high-tech pools inc.
31330 Industrial Parkway
Cleveland, Ohio 44070
www.hightechpools.com
(440) 979-5070
(440) 979-5076-fax



CONSTRUCTION DOCUMENTS

Schlosser Residence
1960 WYNWOOD DRIVE
ROCKY RIVER, OH 44116

POOL: 104 . 2455 . 576 . 18,526 . 1,023 . 51
SPA:
- :

DATE: PRINTED: 12/12/2024 12:34 PM
PREVIOUS DATED PRINTS MUST BE RETURNED TO THE DESIGN DEPARTMENT

REV #1:

REV #2:

REV #3:

REV #4:

REV #5:

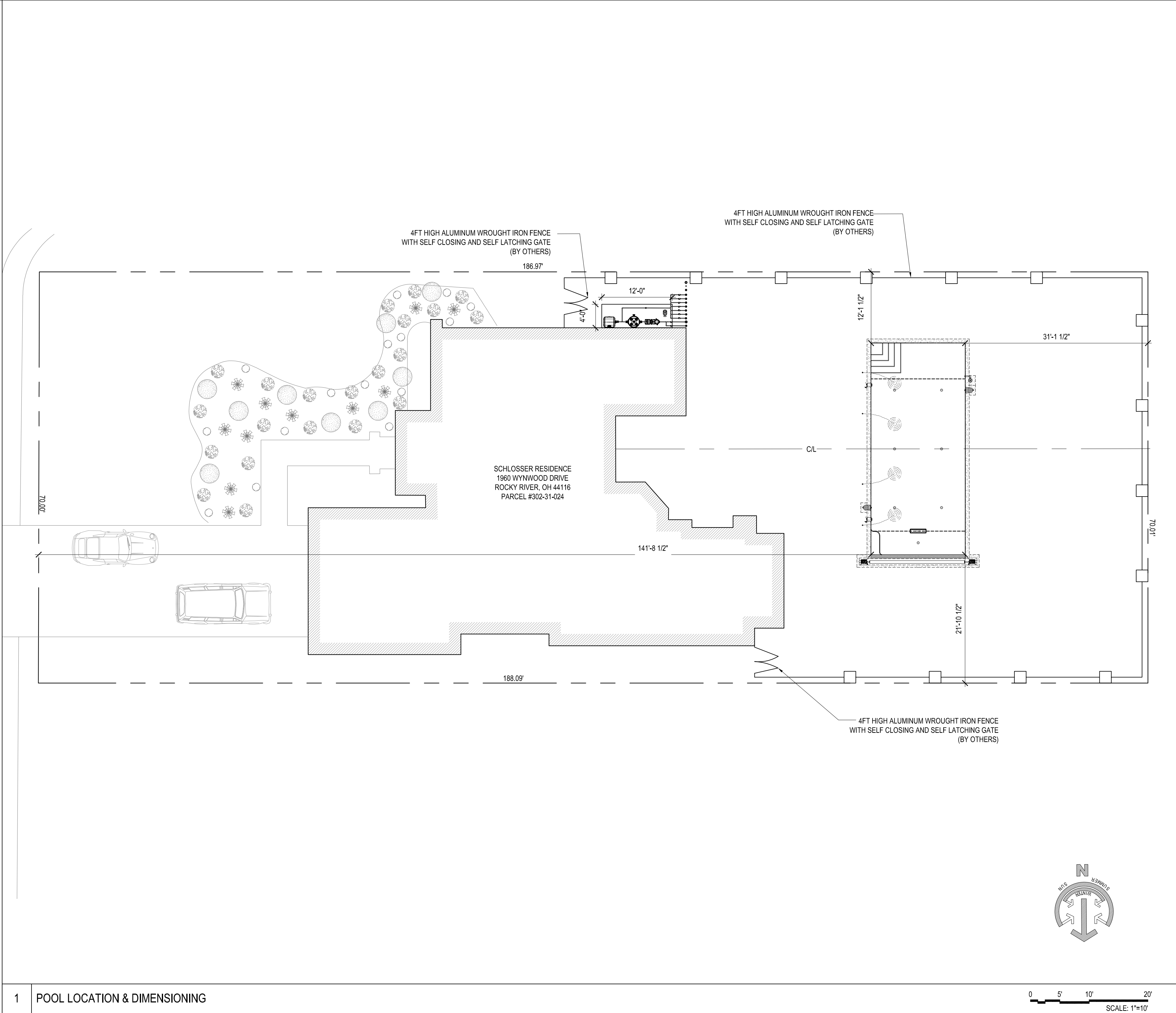
REV #6:

SALES:
DESIGN:
CONST:

TITLE SHEET

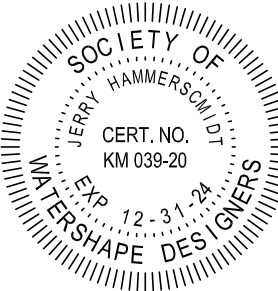
AQ-TS

This document and the ideas, renderings and contents contained herein are the sole property of High-Tech Pools, Inc.
This document may not be disseminated, copied, distributed, reproduced or otherwise used without prior written consent, 2024 ©
SCHLOSSER_CASE BUILDING DATE PRINTED: 12/12/2024 12:34 PM PRINTED BY: KARA RILES



MASTER POOLS by
high-tech pools inc.
31330 Industrial Parkway
Cleveland, Ohio 44070
www.hightechpools.com
(440) 979-5070
(440) 979-5076-fax

This document and the ideas, renderings and contents contained herein are the sole property of High-Tech Pools, Inc.
This document may not be disseminated, copied, distributed, reproduced or otherwise used without prior written consent, 2024 ©
SCHLOSSER_A651 PLANS DATE PRINTED: 12/12/2024 12:34 PM PRINTED BY KARA PILES



CONSTRUCTION DOCUMENTS

Schlosser Residence
1960 WYNWOOD DRIVE
ROCKY RIVER, OH 44116

POOL: 104 . 2455 . 576 . 18,526 . 1,023 . 51
SPA:
- :

DATE: PRINTED: 12/12/2024 12:34 PM

PREVIOUS DATED PRINTS MUST BE RETURNED TO THE DESIGN DEPARTMENT

REV #1:

REV #2:

REV #3:

REV #4:

REV #5:

REV #6:

SALES:
DESIGN:
CONST:

SITE PLAN

AQ-101

SERVICE

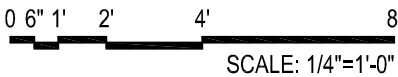
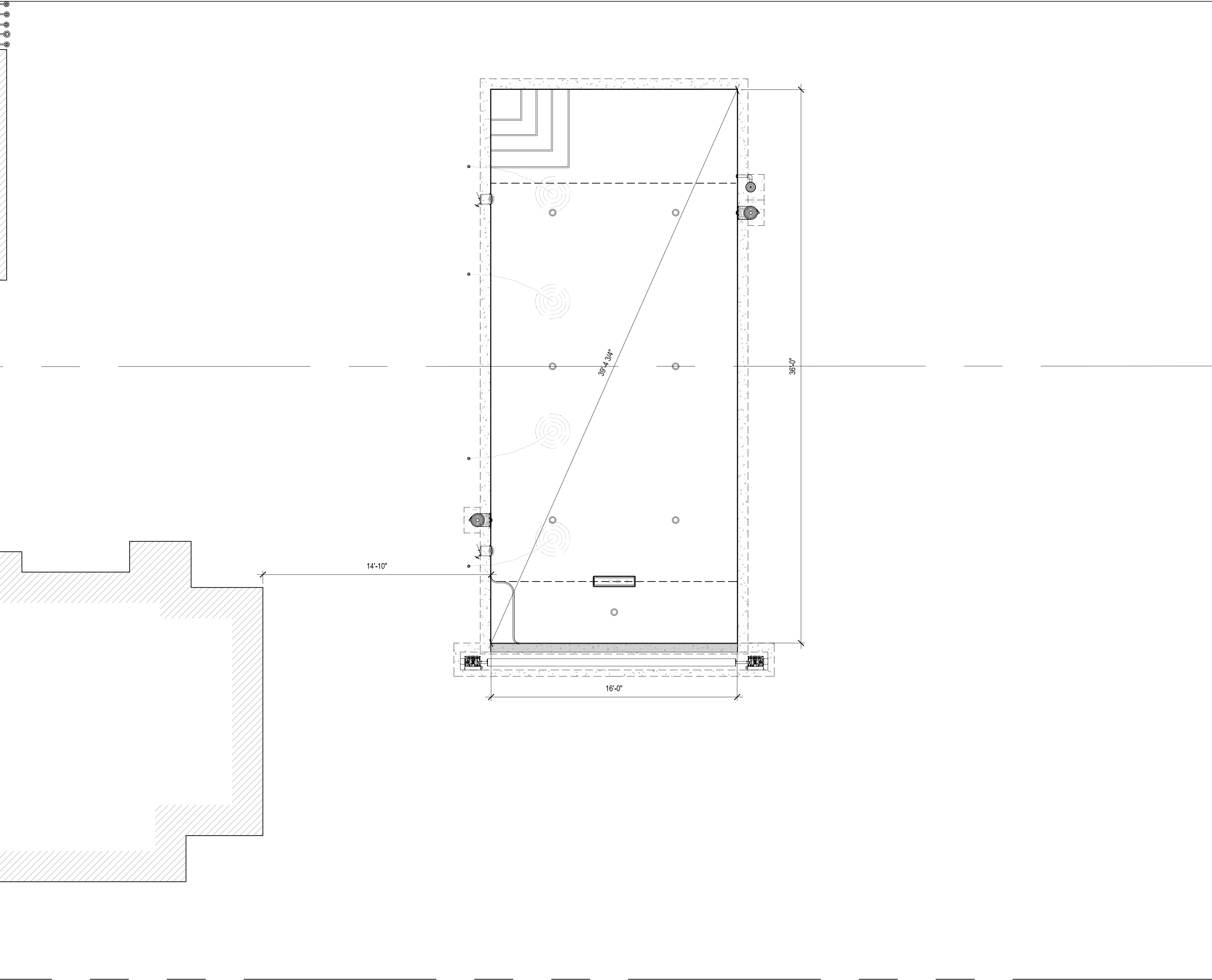
BUILDERS

DESIGNERS

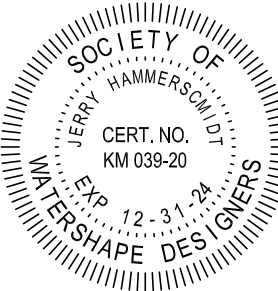
CONSULTANTS

1

POOL LOCATION & DIMENSIONING



SCALE: 1/4"=1'-0"



CONSTRUCTION DOCUMENTS

Schlusser Residence

1960 WYNWOOD DRIVE
ROCKY RIVER, OH 44116

POOL: 104 . 2455 . 576 . 18,526 . 1,023 . 51

SPA:

- :

DATE: PRINTED: 12/12/2024 12:34 PM

PREVIOUS DATED PRINTS MUST BE RETURNED TO THE DESIGN DEPARTMENT

REV #1:

REV #2:

REV #3:

REV #4:

REV #5:

REV #6:

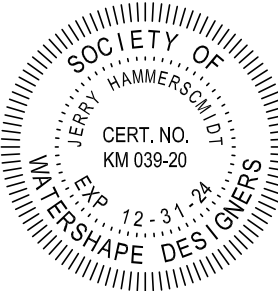
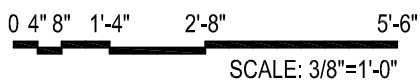
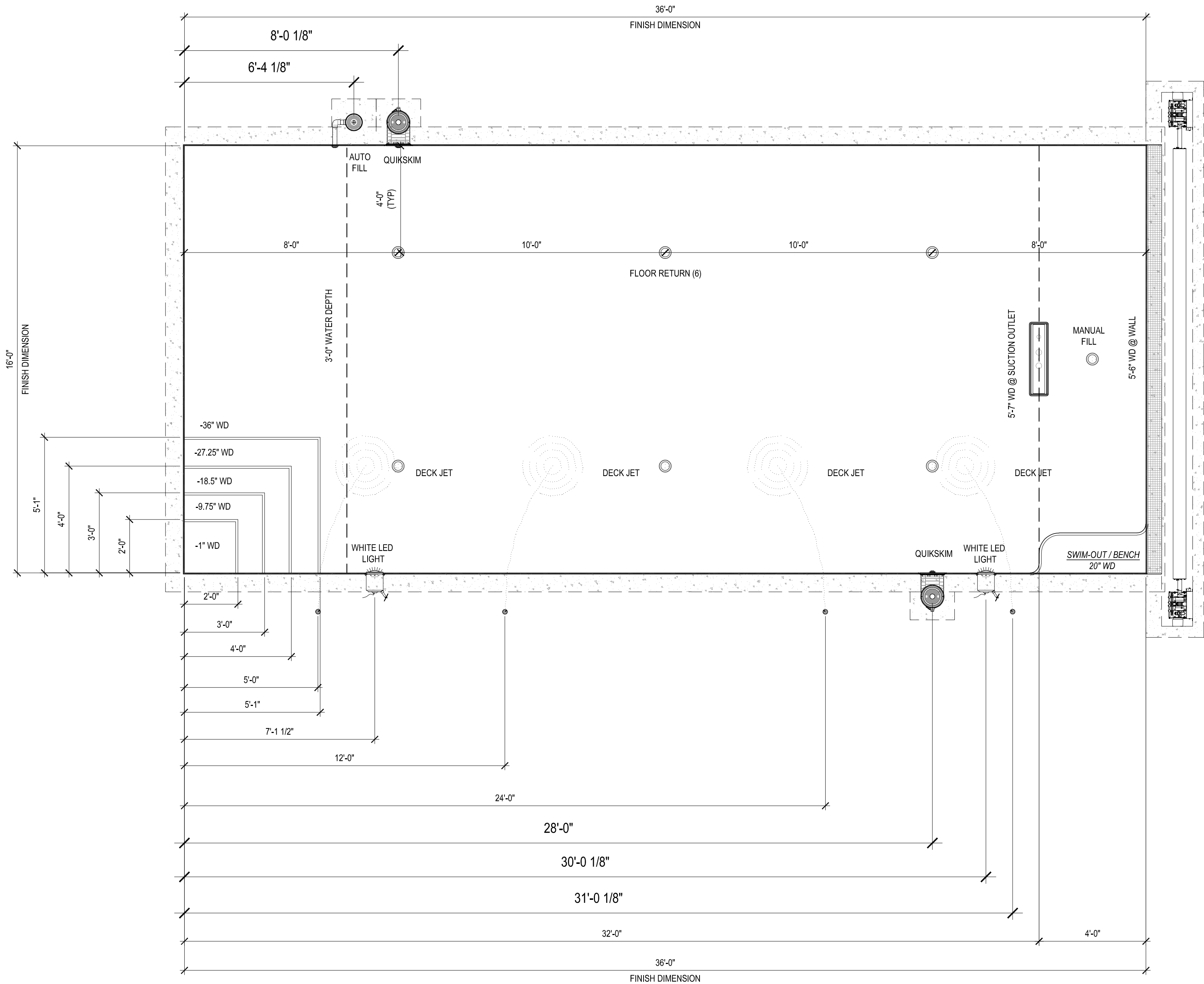
SALES:
DESIGN:
CONST:

POOL - LAYOUT

AQ-110

MASTER POOLS by
high-tech pools inc.
31330 Industrial Parkway
Cleveland, Ohio 44070
www.hightechpools.com
(440) 979-5070
(440) 979-5076-fax

This document and the ideas, renderings and contents contained herein are the sole property of High-Tech Pools, Inc.
This document may not be disseminated, copied, distributed, reproduced or otherwise used without prior written consent, 2024 ©
SCHLOSSER_A651 PLDWG DATE PRINTED: 12/12/2024 12:34 PM PRINTED BY KARA PULLES



CONSTRUCTION DOCUMENTS

Schlusser Residence
1960 WYNWOOD DRIVE
ROCKY RIVER, OH 44116

POOL: 104 . 2455 . 576 . 18,526 . 1,023 . 51
SPA:
- :

DATE: PRINTED: 12/12/2024 12:34 PM
PREVIOUS DATED PRINTS MUST BE RETURNED TO THE DESIGN DEPARTMENT

REV #1:

REV #2:

REV #3:

REV #4:

REV #5:

REV #6:

SALES:
DESIGN:
CONST:

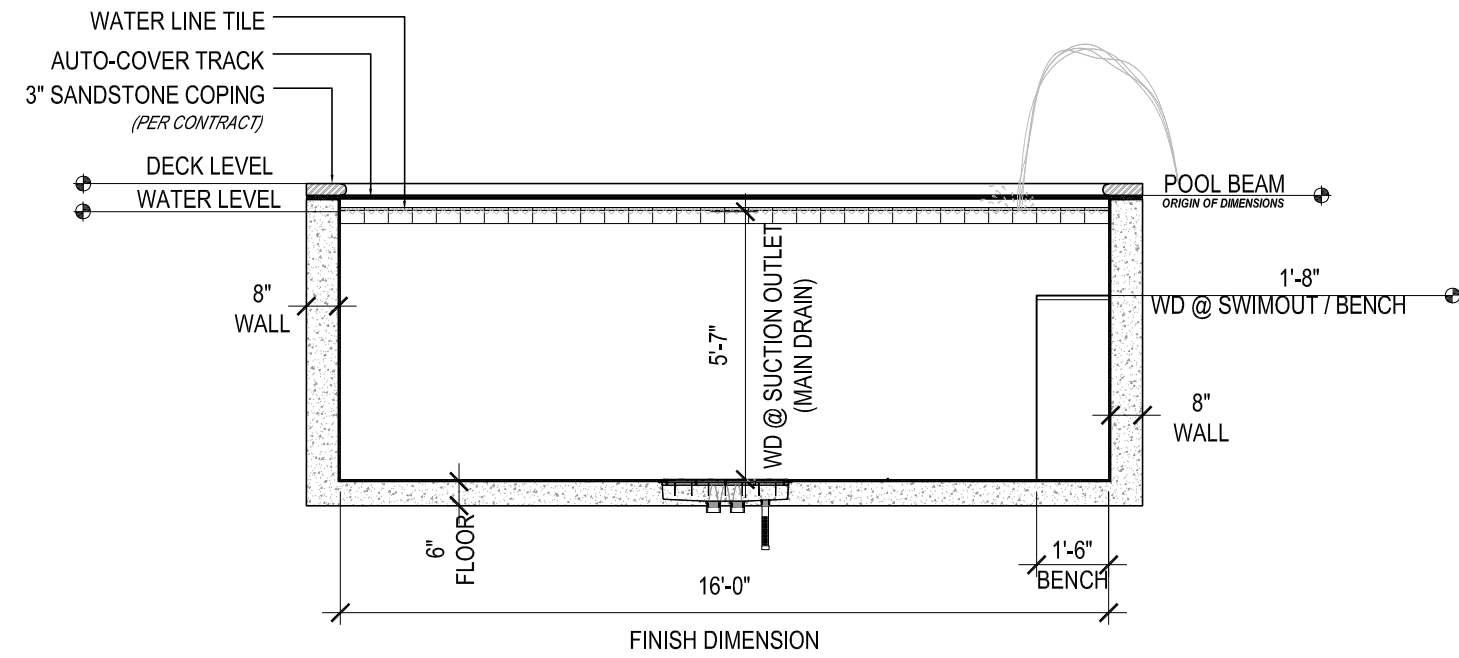
POOL - DIMENSIONING PLAN

AQ-111

MASTER POOLS by
high-tech pools inc.
31330 Industrial Parkway
Cleveland, Ohio 44070
www.hightechpools.com
(440) 979-5070
(440) 979-5076-fax

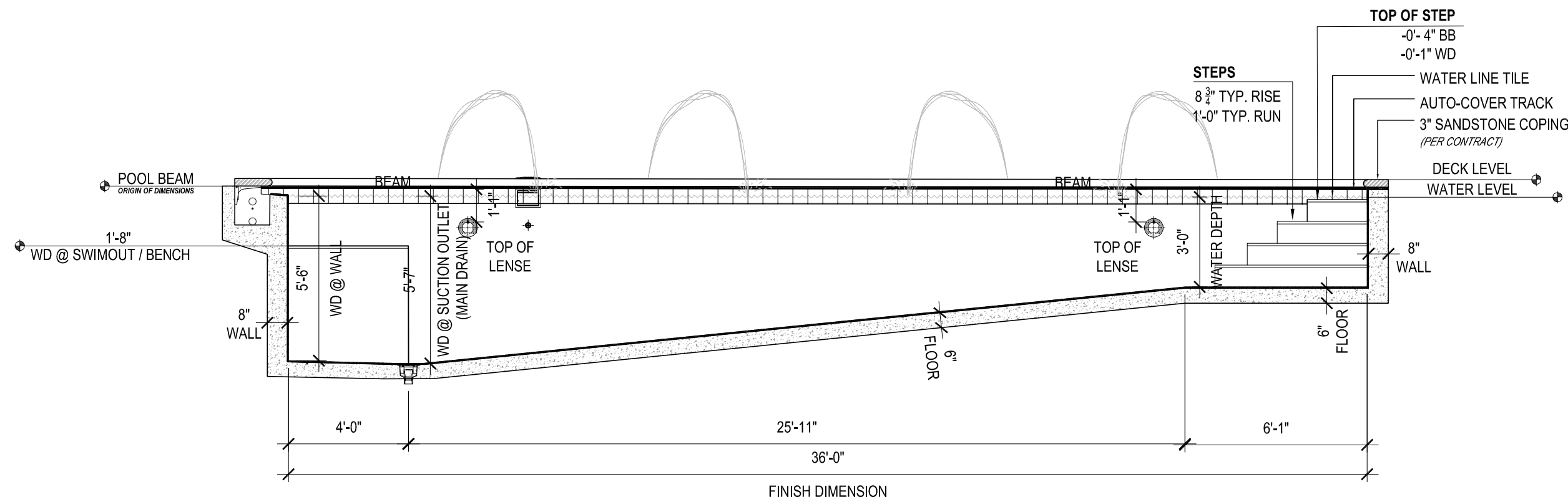
This document and the ideas, renderings and contents contained herein are the sole property of High-Tech Pools, Inc.
This document may not be disseminated, copied, distributed, reproduced or otherwise used without prior written consent, 2024 ©
SCHLUSSEK_A456 PLANS DATE PRINTED: 12/12/2024 12:34 PM / PRINTED BY: KARA PALLES

CONSULTANTS



SCALE: 1/4" = 1'-0"

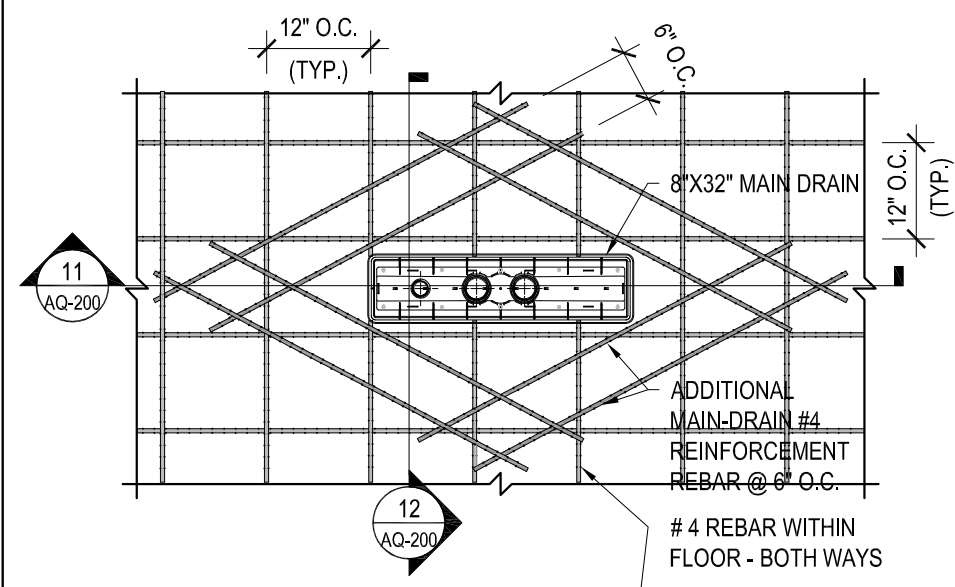
SCALE: 1/4" = 1'-0"



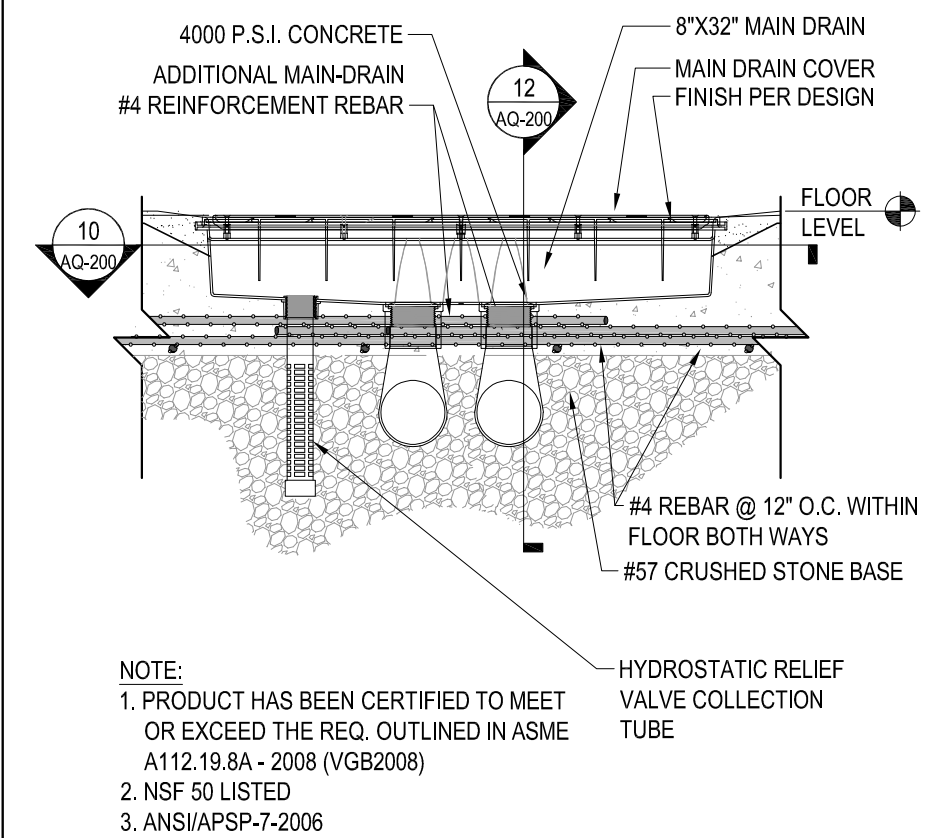
SCALE: 1/4" = 1'-0"

AQ-112

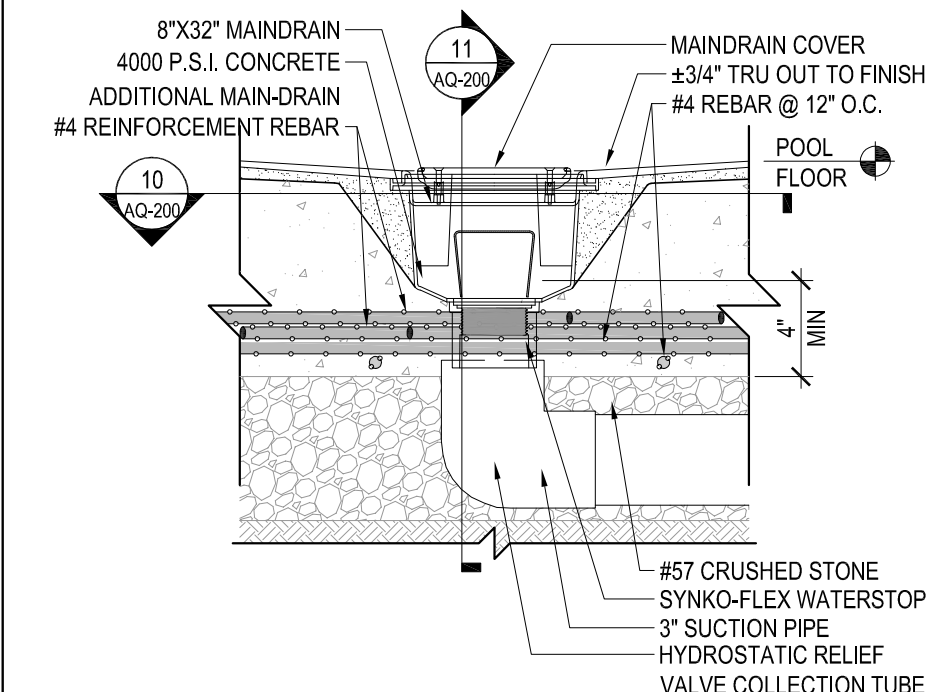
CONSULTANTS



10 POOL - MAIN DRAIN REBAR PLAN



11 POOL - MAIN DRAIN SECTION (LENGTH) SCALE: 1 1/2" = 1'-0"



12 POOL - MAIN DRAIN SECTION (WIDTH) SCALE: 1 1/2" = 1'-0"

AQ-200

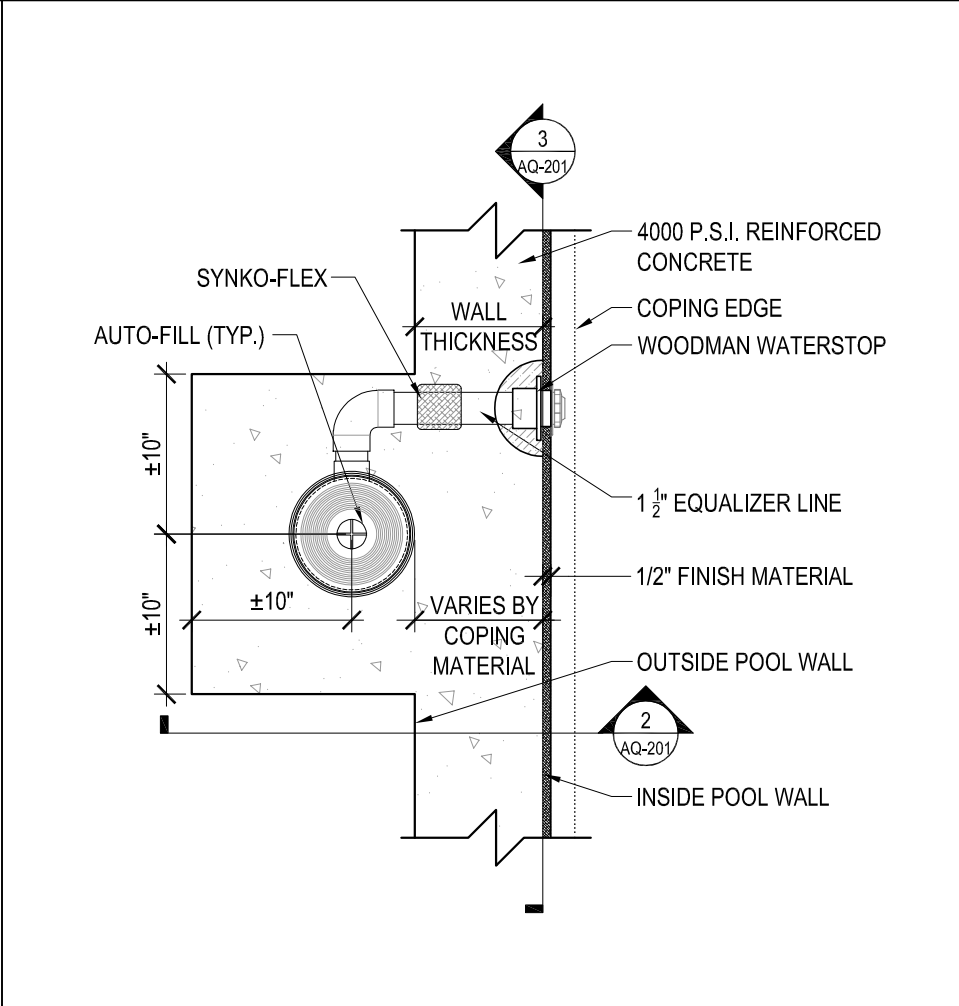
This document and the ideas, renderings and contents contained herein are the sole property of High-Tech Pools, Inc. This document may not be disseminated, copied, distributed, reproduced or otherwise used without prior written consent, 2024 © SCHLOSSER_2451 (R) DWG DATE PRINTED 12/12/2024 12:34 PM PRINTED BY KARA RULES

SERVICE

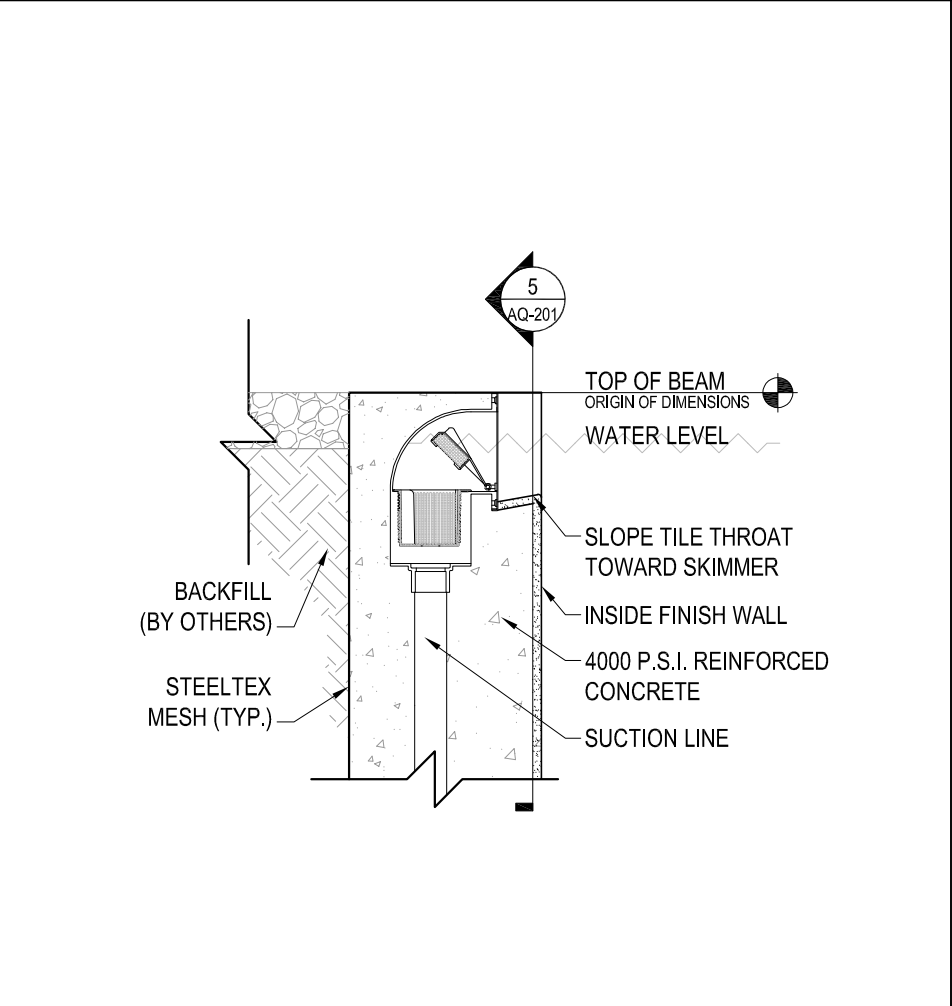
BUILDERS

DESIGNERS

CONSULTANTS



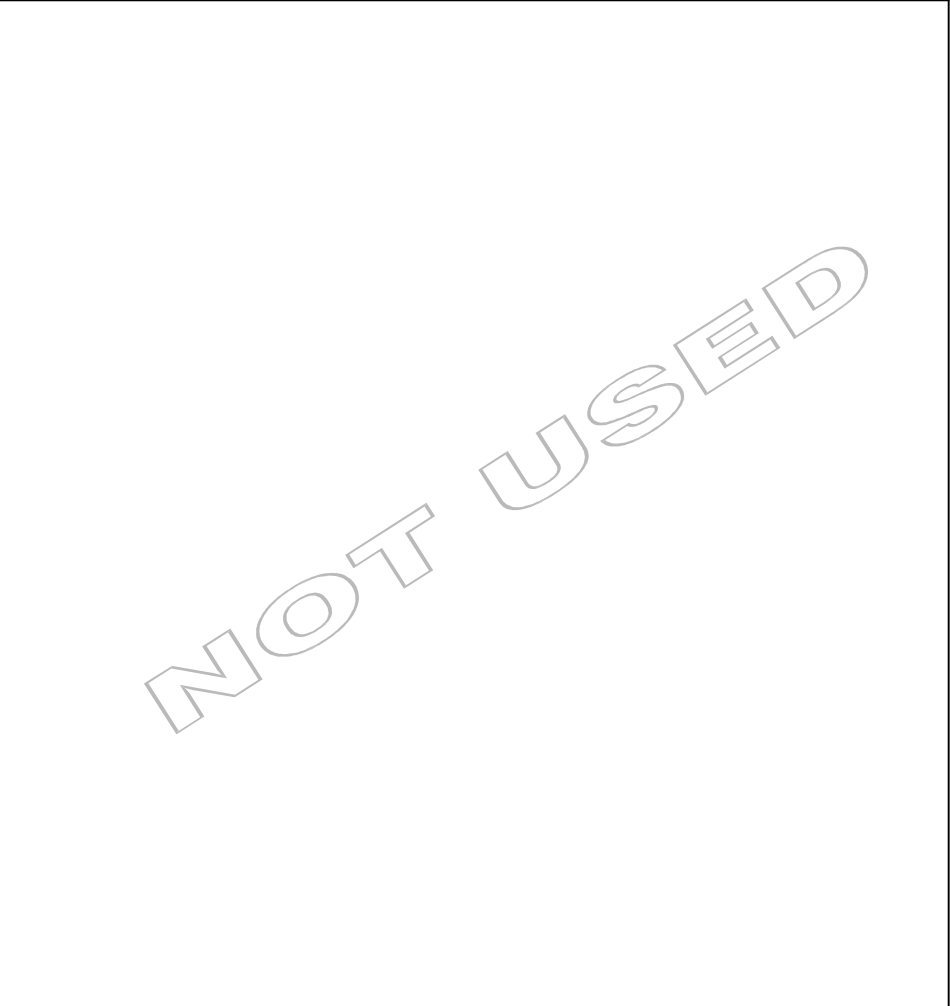
1 POOL / SPA AUTO-FILL PLAN ENLARGMENT
SCALE: 1" = 1'-0"



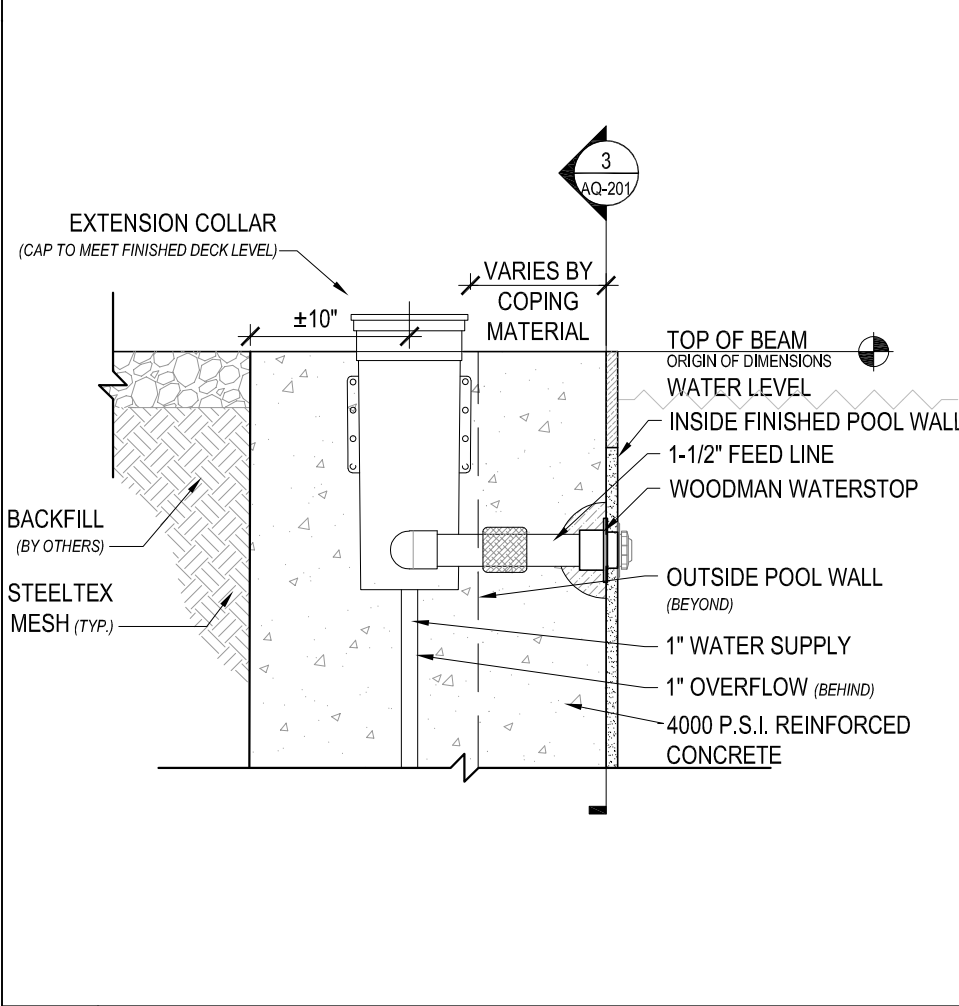
4 SPA SKIMMER SECTION
SCALE: 1" = 1'-0"



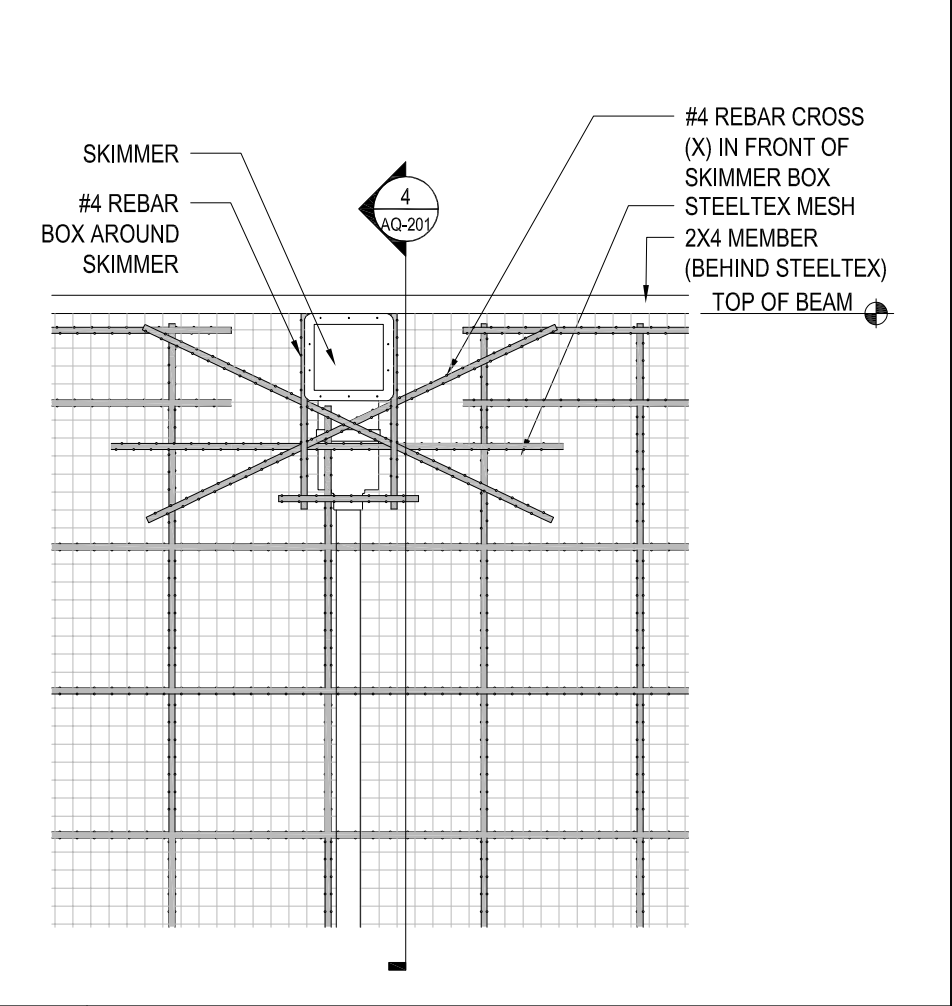
7 NOT USED



10 NOT USED



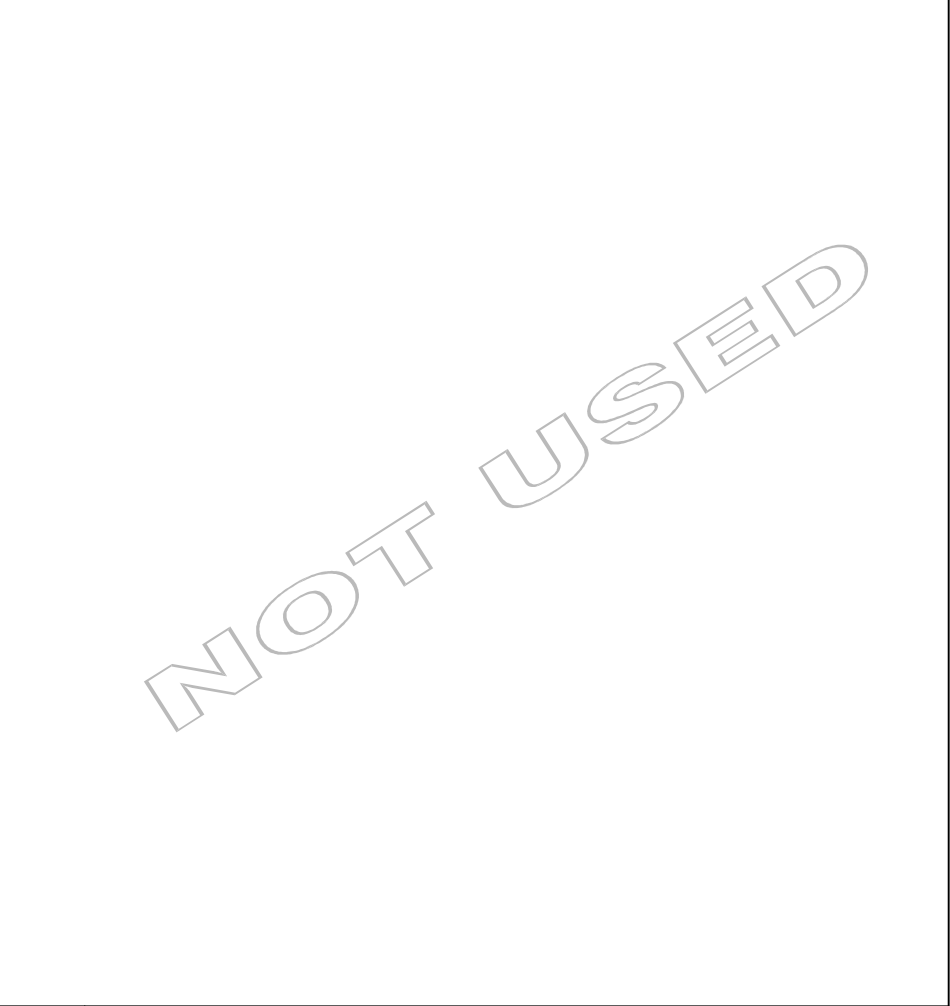
2 POOL / SPA AUTO-FILL SECTION ELEVATION
SCALE: 1" = 1'-0"



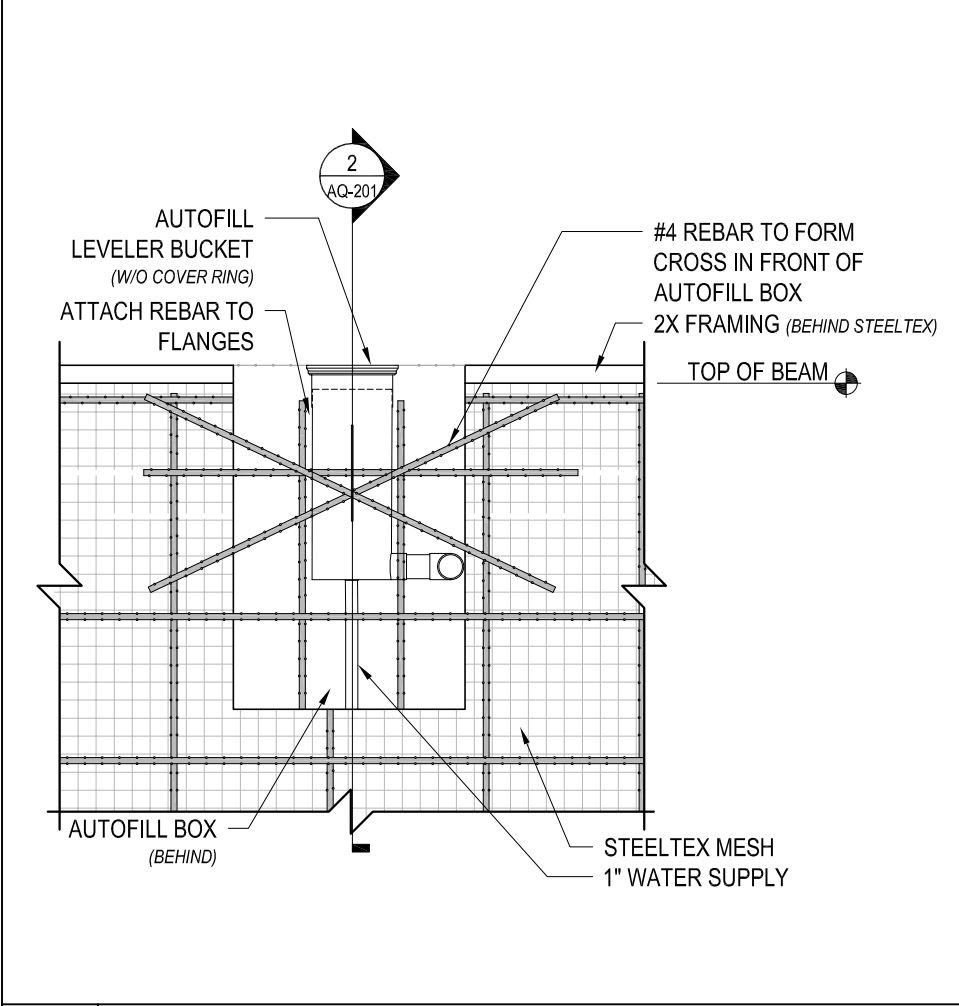
5 SPA SKIMMER PRE GUNITE SECTION
SCALE: 3/4" = 1'-0"



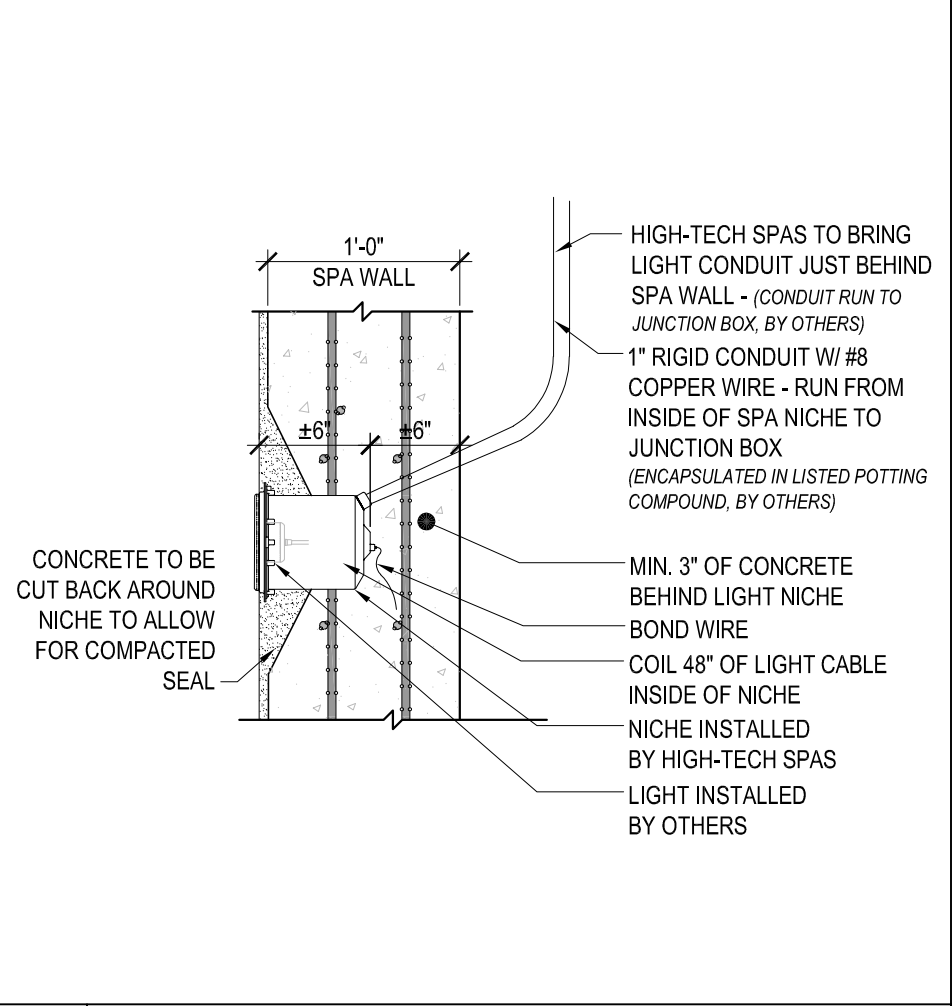
8 NOT USED



11 NOT USED



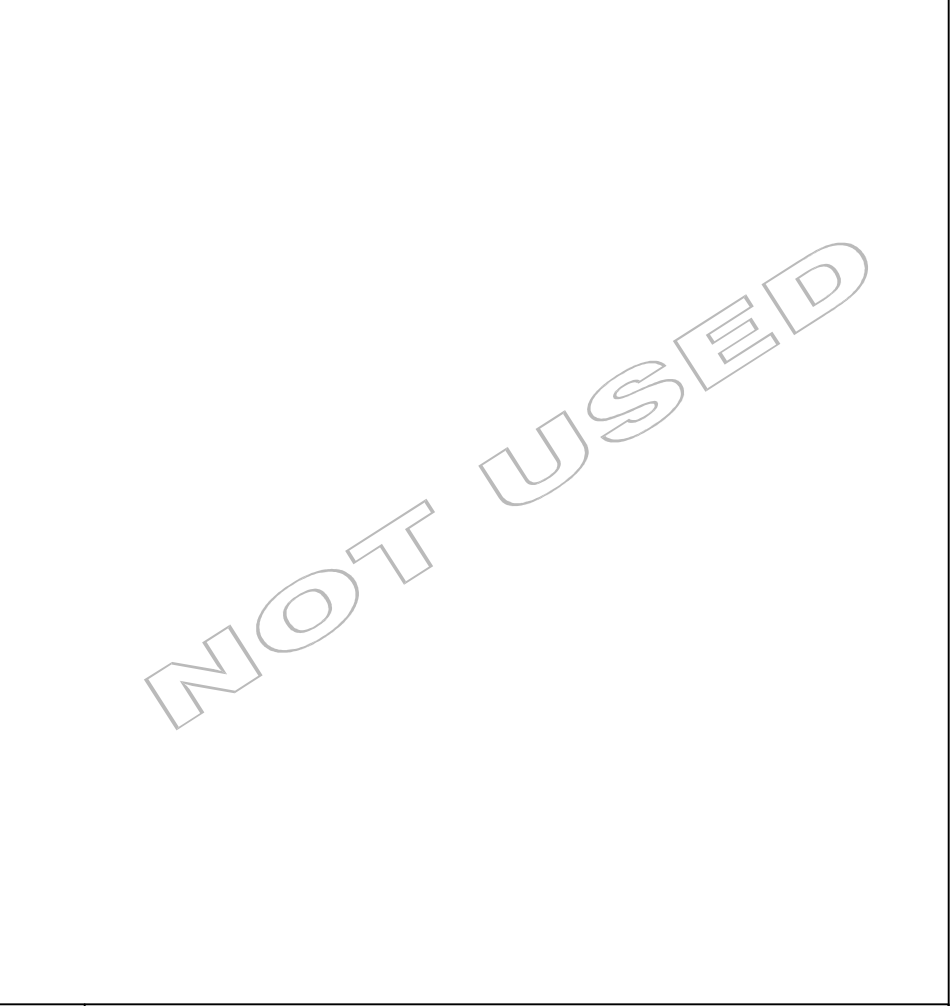
3 POOL / SPA AUTO-FILL PRE GUNITE SECTION
SCALE: 3/4" = 1'-0"



6 SPA L.E.D. SMALL NICH LIGHT
SCALE: 1" = 1'-0"



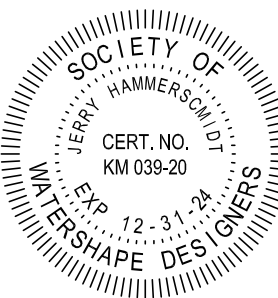
9 NOT USED



12 NOT USED

MASTER POOLS by
high-tech pools inc.
31330 Industrial Parkway
Cleveland, Ohio 44070
www.hightechpools.com
(440) 979-5070
(440) 979-5076-fax

This document and the ideas, renderings and contents contained herein are the sole property of High-Tech Pools, Inc.
This document may not be disseminated, copied, reproduced or otherwise used without prior written consent, 2024 ©
SCHLOSSER, 2455 BUILDING, DATE PRINTED: 8/12/2024 12:34 PM / PRINTED BY: KARA PALLES



CONSTRUCTION DOCUMENTS

Schlosser Residence
1960 WYNWOOD DRIVE
ROCKY RIVER, OH 44116

POOL: 104 . 2455 . 576 . 18,526 . 1,023 . 51
SPA:
- :

REV #1:

REV #2:

REV #3:

REV #4:

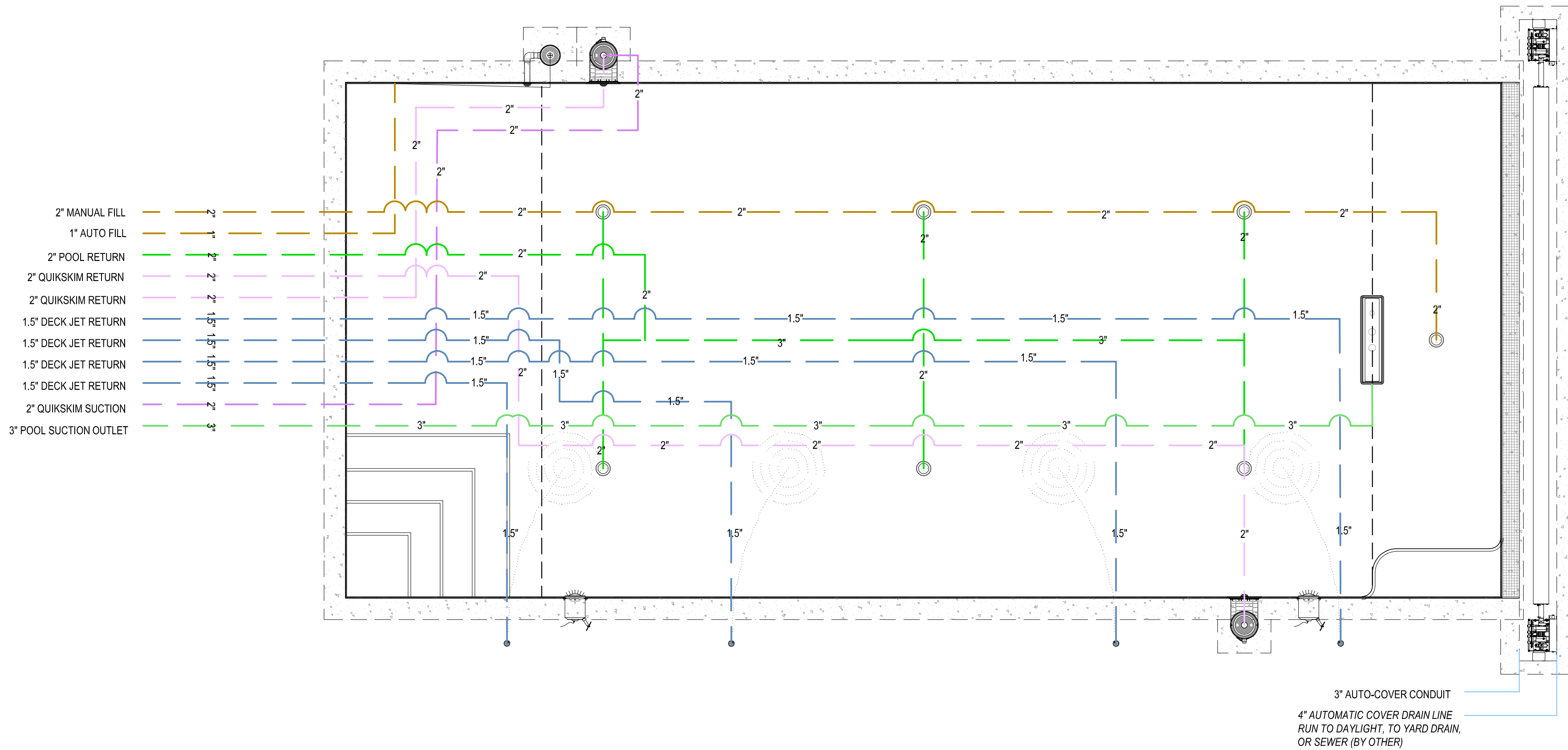
REV #5:

REV #6:

SALES:
DESIGN:
CONST:

AQUATIC
STRUCTURAL DETAILS

AQ-201



MASTER POOLS by

high-tech pools inc.

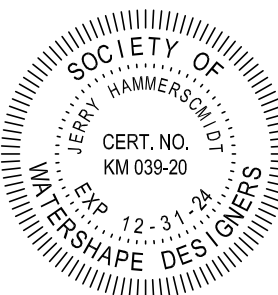
(440) 979-5070

(440) 979-5076-fax

31330 Industrial Parkway

Cleveland, Ohio 44070

www.hightechpools.com



CONSTRUCTION DOCUMENTS

Schlusser Residence

1960 WYNWOOD DRIVE

ROCKY RIVER, OH 44116

POOL: 104 .2455 .576 .18,526 .1,023 .51

SPA:

- :

REV #1:

REV #2:

REV #3:

REV #4:

REV #5:

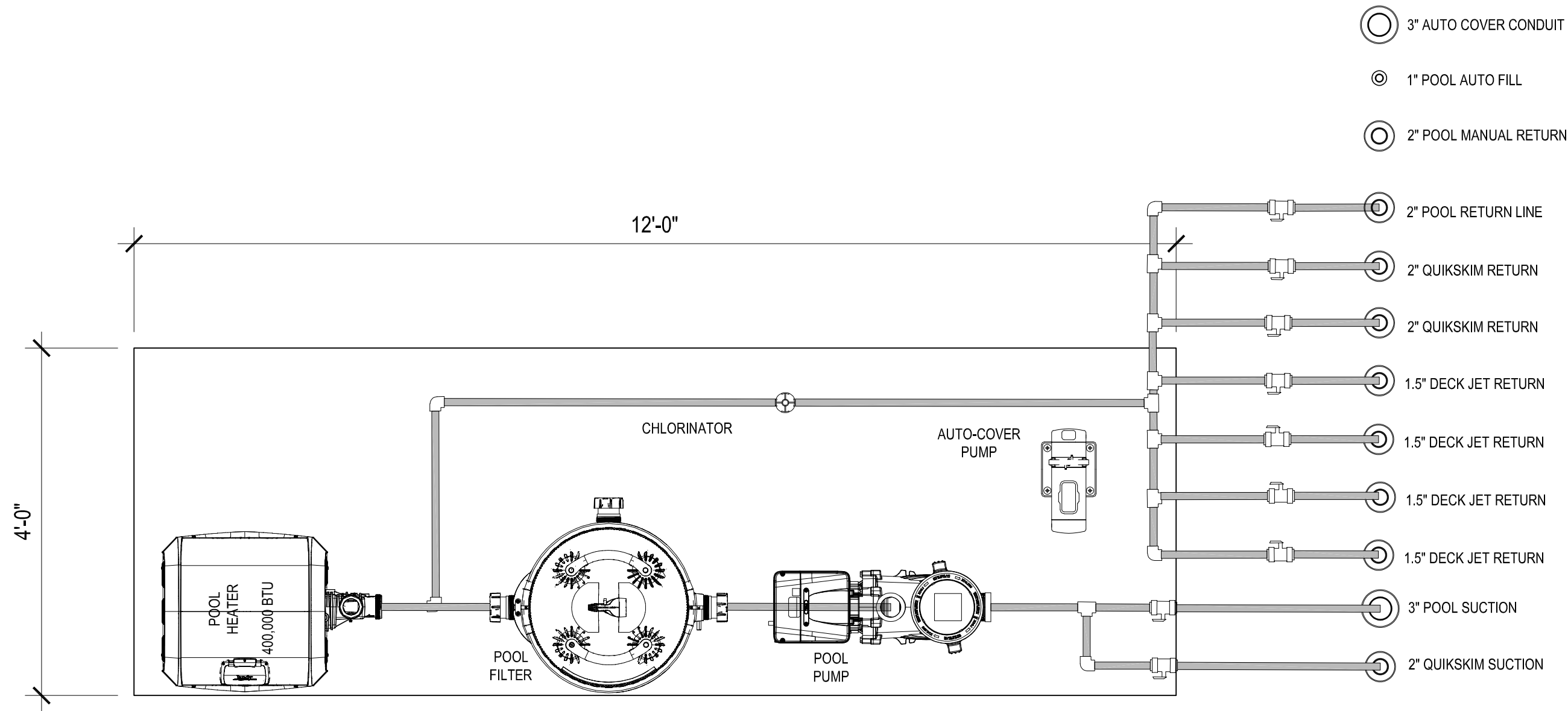
REV #6:

SALES:
DESIGN:
CONST:POOL
PLUMBING**AQ-311**

This document and the ideas, renderings and contents contained herein are the sole property of High-Tech Pools, Inc.
This document may not be disseminated, copied, distributed, reproduced or otherwise used without prior written consent, 2024 ©
SCHLUSSEK_AQ311 PLUMBING DATE PRINTED: 10/22/2024 12:34 PM / PRINTED BY: KARA PALLES

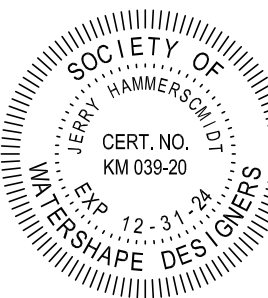
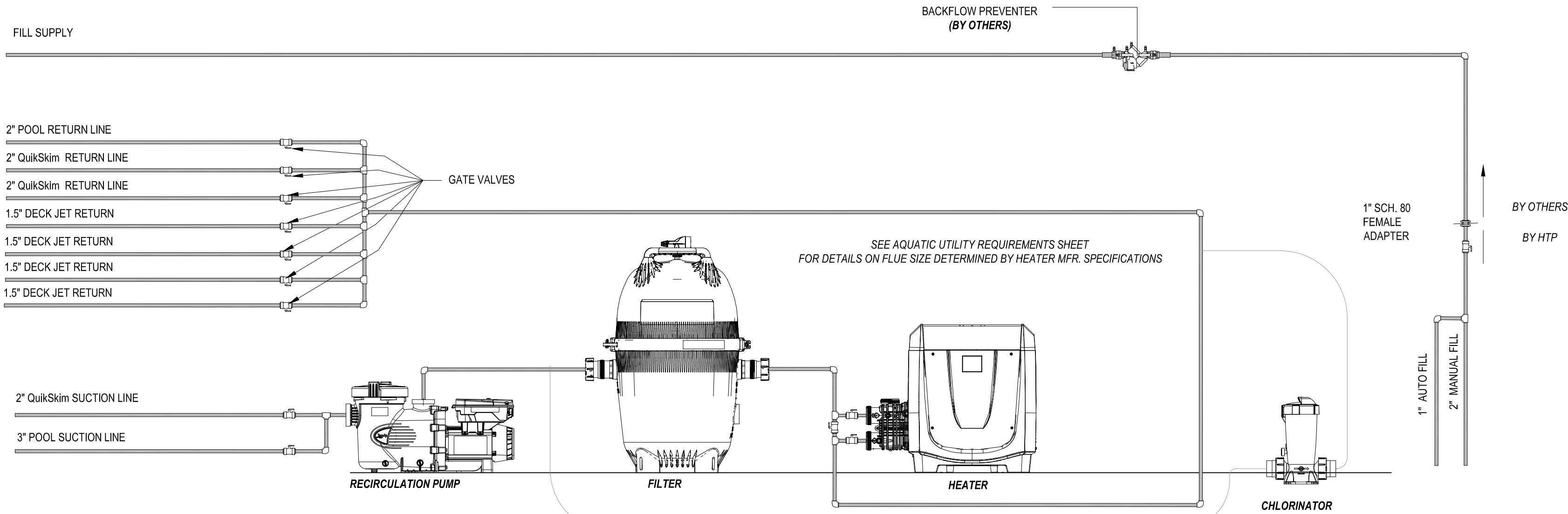
1 EQUIPMENT PAD/ROOM DETAIL

NOT TO SCALE



2 MECHANICAL DETAIL

NOT TO SCALE



CONSTRUCTION DOCUMENTS

Schlusser Residence
1960 WYNWOOD DRIVE
ROCKY RIVER, OH 44116

POOL: 104 . 2455 . 576 . 18,526 . 1,023 . 51
SPA:
- :

REV #1:

REV #2:

REV #3:

REV #4:

REV #5:

REV #6:

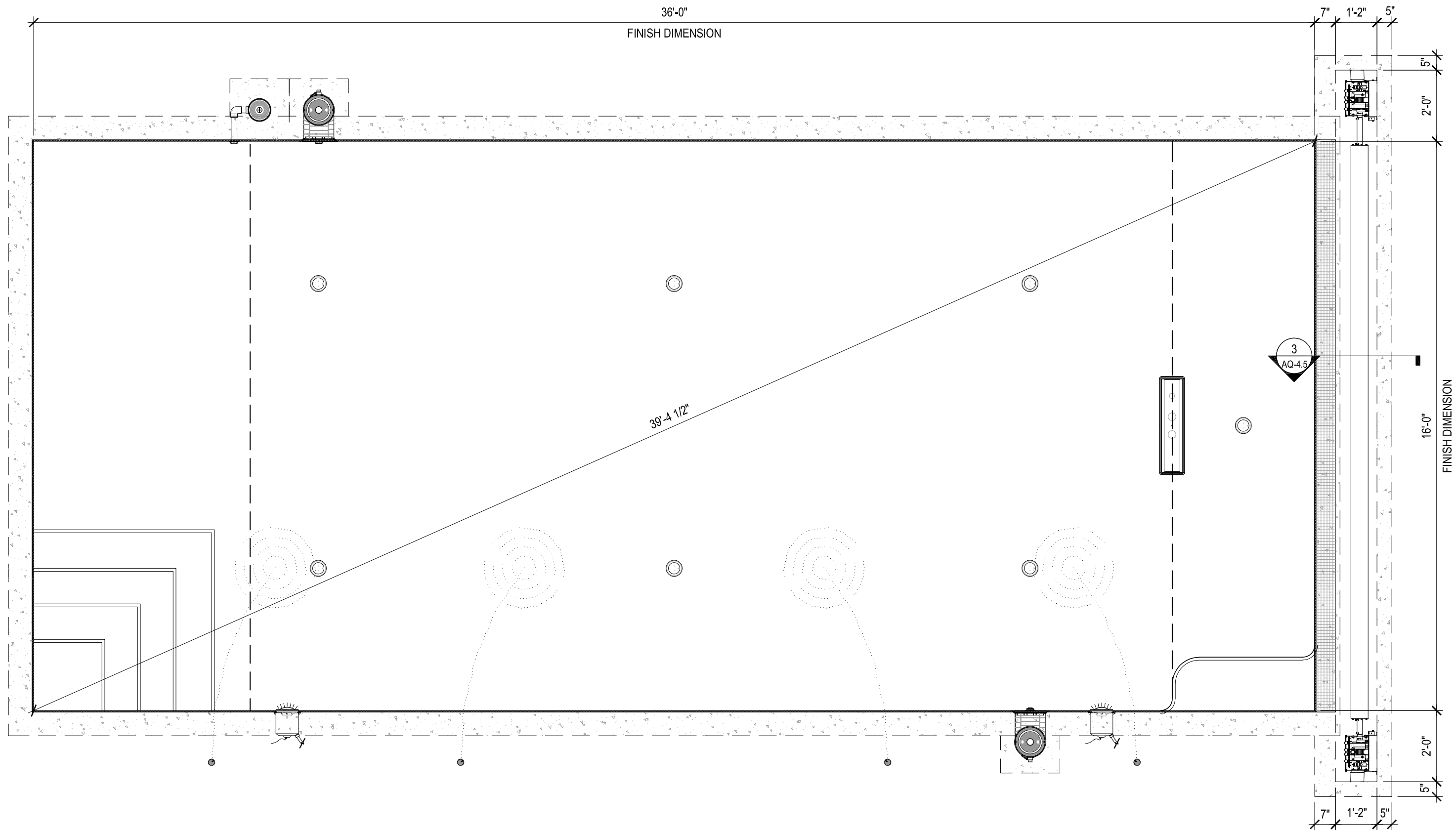
SALES:
DESIGN:
CONST:

AQUATIC
MECHANICAL DETAILS

AQ-400

MASTER POOLS by
high-tech pools inc.
31330 Industrial Parkway
Cleveland, Ohio 44070
www.hightechpools.com
(440) 979-5070
(440) 979-5076-fax

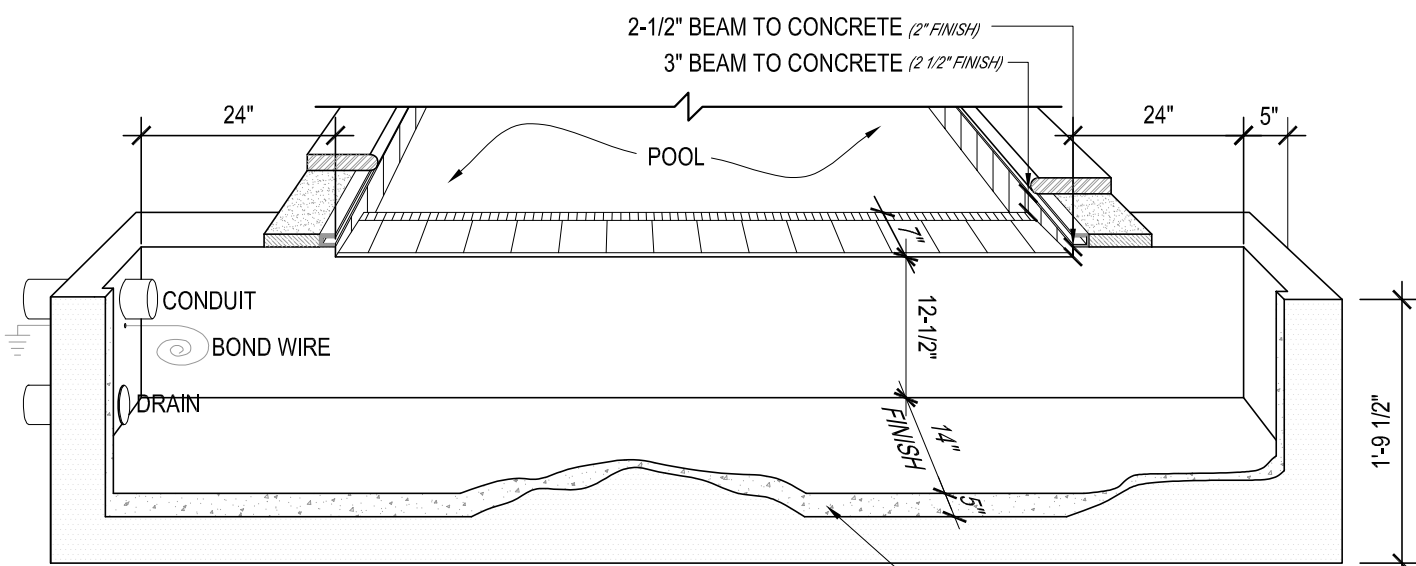
This document and the ideas, renderings and contents contained herein are the sole property of High-Tech Pools, Inc.
This document may not be disseminated, copied, distributed, reproduced or otherwise used without prior written consent, 2024 ©
SCHLOSSER, 2455 BUILDING, DATE PRINTED: 9/12/2024 12:34 PM / PRINTED BY: KARA PALLES



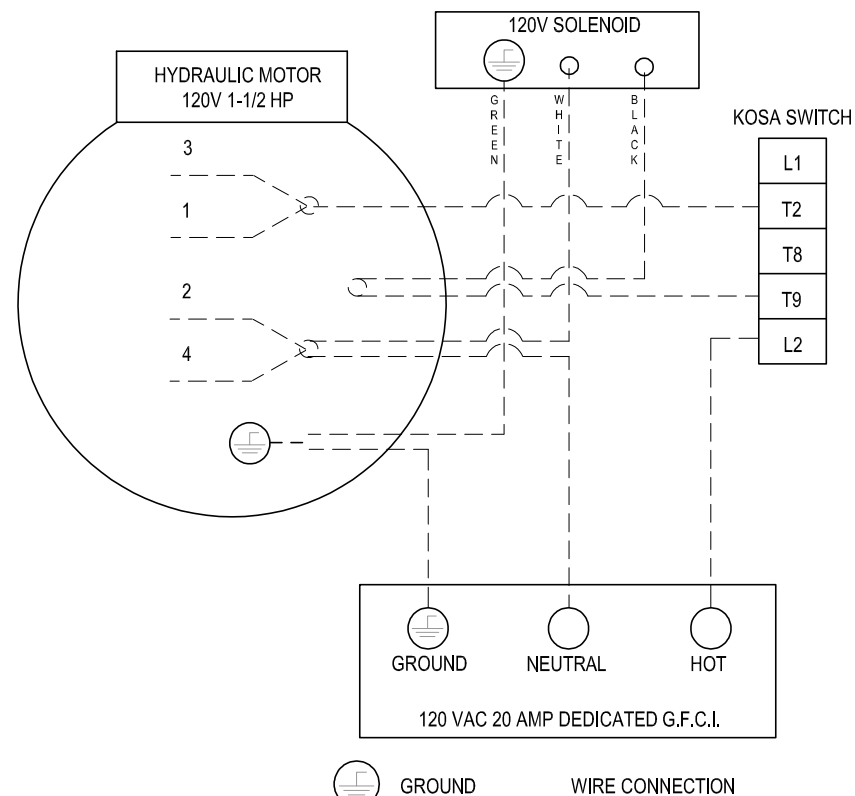
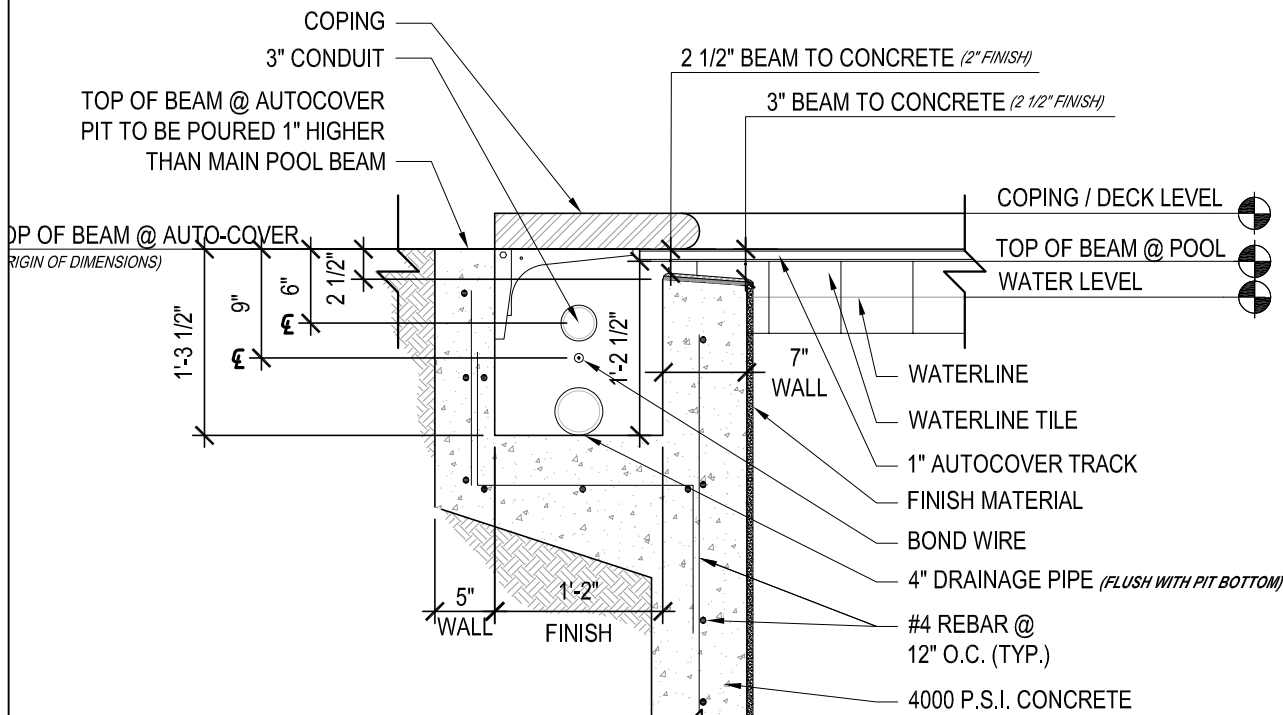
NOTE:
POOL COVERS ARE UL LISTED AND INDEPENDENTLY CERTIFIED TO EXCEED THE REQUIREMENTS OF THE AMERICAN SOCIETY FOR TESTING AND MATERIALS (ASTM F1346-91), WHICH SETS SAFETY STANDARDS FOR POOL COVERS.

1 POOL AUTO-COVER DIMENSION PLAN

SCALE: 3/8" = 1'-0"



NOTES:
CONDUIT MUST BE ON THE MOTOR END
CONDUIT SHOULD NOT PROTRUDE MORE THAN 4" INTO BOX



2 POOL AUTO-COVER

NOT TO SCALE

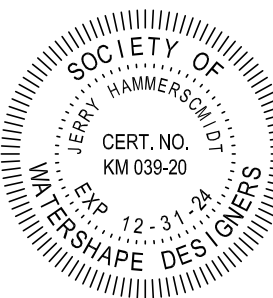
3 POOL AUTO-COVER SECTION

SCALE: 3/4" = 1'-0"

4 POOL AUTO-COVER

MASTER POOLS by
high-tech pools inc.
31330 Industrial Parkway
Cleveland, Ohio 44070
www.hightechpools.com
(440) 979-5070
(440) 979-5076-fax

This document and the ideas, renderings and contents contained herein are the sole property of High-Tech Pools, Inc.
This document may not be disseminated, copied, distributed, reproduced or otherwise used without prior written consent, 2024 ©
SCHLOSSER, 2455 BUILDING, DATE PRINTED: 9/12/2024 12:34 PM / PRINTED BY: KARA PALLES



CONSTRUCTION DOCUMENTS

Schlusser Residence

1960 WYNWOOD DRIVE
ROCKY RIVER, OH 44116

POOL: 104 . 2455 . 576 . 18,526 . 1,023 . 51
SPA:
- :

REV #1:

REV #2:

REV #3:

REV #4:

REV #5:

REV #6:

SALES:
DESIGN:
CONST:

POOL
AUTOMATIC COVER

AQ-415

LOCATION REQUIREMENTS

THE JXI HEATER IS SHIPPED FROM THE FACTORY WITH AN EXHAUST VENT CONFIGURED FOR OUTDOOR INSTALLATION. THE HEATER IS ALSO DESIGN-CERTIFIED FOR INDOOR INSTALLATIONS. SEE SECTION 3.3, INDOOR AND OUTDOOR SHELTER INSTALLATION FOR DETAILS. IN CANADA, INDOOR INSTALLATION MUST USE A TWO PIPE DIRECT VENT (COMBUSTION AIR AND VENT PIPING). SEE SECTION 3.3.2, DIRECT VENTING FOR DETAILS. LOCATION OF THE HEATER BELOW OR ABOVE THE POOL WATER LEVEL AFFECTS OPERATION OF ITS WATER PRESSURE SWITCH. SEE SECTION 5.3, WATER PRESSURE SWITCH ADJUSTMENT FOR MORE INFORMATION. EQUIPMENT MUST BE INSTALLED ON A FIRM, SOLID, NON-LEVEL SURFACE, AND PER THE REQUIREMENTS OF ABSORBENT LOCAL CODES AND AUTHORITY HAVING JURISDICTION (A.H.J.). EQUIPMENT CAN WEIGH UP TO 156 LBS. (57 KG). USE SUITABLY RATED MOUNTING SURFACE MATERIALS TO AVOID RISK OF SETTLEMENT, AND NEVER USE SAND TO LEVEL THE EQUIPMENT AS THE SAND WILL WASH AWAY. CHECK LOCAL BUILDING CODES FOR ADDITIONAL REQUIREMENTS. NOTE: IF THE HEATER IS TO BE OPERATED IN BELOW FREEZING CONDITIONS IT SHOULD BE INSTALLED IN A PROTECTED OUTDOOR SHELTER.

CLEARANCES

THE HEATER MUST BE INSTALLED IN A LOCATION THAT ALLOWS CLEARANCES FOR MAINTENANCE AND INSPECTION. MINIMUM DISTANCES FROM COMBUSTIBLE SURFACES MUST ALSO BE MAINTAINED. ALL CRITERIA GIVEN IN THE FOLLOWING SECTIONS REFLECT MINIMUM CLEARANCES AS STATED IN THE NATIONAL STANDARDS. HOWEVER, EACH INSTALLATION MUST ALSO BE EVALUATED, TAKING INTO ACCOUNT PREVAILING LOCAL CONDITIONS SUCH AS WIND SPEED AND DIRECTION, PROXIMITY AND HEIGHT OF OBSTRUCTIONS THAT MAY BLOCK VENTILATION, AND PROXIMITY TO PUBLIC ACCESS AREAS. SERVICE CLEARANCE: 36 INCHES (92 CM) FROM TOP OF HEATER PER REMOVAL OF TOP PANEL. 18 INCHES IN THE US AND 24 INCHES (61 CM) IN CANADA FROM THE FRONT PANEL OF THE HEATER. ONE EXCEPTION TO THIS IS IF THE TOP PANEL IS REVERSED SUCH THAT THE WATER PLUMBING IS NOW ON THE LEFT HAND SIDE OF THE HEATER AND THE EXHAUST IS ON THE RIGHT HAND SIDE. IN THIS CASE, YOU WILL NEED THE SERVICE CLEARANCE (18" US/24" CAN) FROM THE REAR PANEL OF THE HEATER. COMBUSTIBLE SURFACES: EACH HEATER FACE REQUIRES A 6 INCH (15 CM) CLEARANCE FROM COMBUSTIBLE SURFACES. ALTHOUGH IT IS NOT ADVISABLE, THE HEATER BASE CAN BE PLACED ON A COMBUSTIBLE SURFACE FOR OPERATION. HOWEVER, DO NOT INSTALL THE HEATER ON CARPET.

COMBUSTIBLE SURFACE
6 in (15 cm)

Service Clearance
TOP: 36 in (92 cm)
FRONT: 18 in (46 cm) USA
24 in (61 cm) Canada
required per CSA B149.1,
section 4.14.2.

NOTE: SERVICE CLEARANCE
MAY BE NEEDED FROM THE
REAR IF THE TOP PANEL IS
REVERSED.

NOTE: CLEARANCES ARE MANUFACTURER'S
TESTED VALUES. THESE ARE GIVEN AS MINIMUM
VALUES. WHERE LOCAL AND NATIONAL CODES
APPLY, AND IF THE CLEARANCE VALUES SPECIFIED
IN THE APPLICABLE CODES ARE DIFFERENT THAN
THOSE LISTED IN THIS MANUAL, USE THE GREATER
VALUE TO ENSURE SAFEST OPERATION.

FIGURE 2

OUTDOOR INSTALLATIONS

LOCATE THE HEATER:

- ON A LEVEL SOLID SURFACE
- 5 FT (1.5 M) FROM INNER POOL EDGE UNLESS SEPARATED BY A PERMANENT SOLID BARRIER, I.E. A WALL OR FENCE
- IN AN OPEN AREA, NOT UNDER A DECK OR OTHER STRUCTURE
- AWAY FROM DOORS, WINDOWS OR LOUVERS THAT CONNECT IN ANY WAY TO OCCUPIED OR INHABITED AREAS OF THE BUILDING
- AWAY FROM RAINWATER RUNOFF
- AWAY FROM POTENTIAL SPRINKLER WATER INTRUSION
- SO THAT THE TOP OF THE HEATER IS AT LEAST 3 FEET (1 M) BELOW ANY OVERHANG
- SO THAT THE TOP SURFACE OF THE HEATER IS AT LEAST 3 FEET (1 M) ABOVE ANY FORCED AIR INLET WITHIN 10 FEET (3 M)

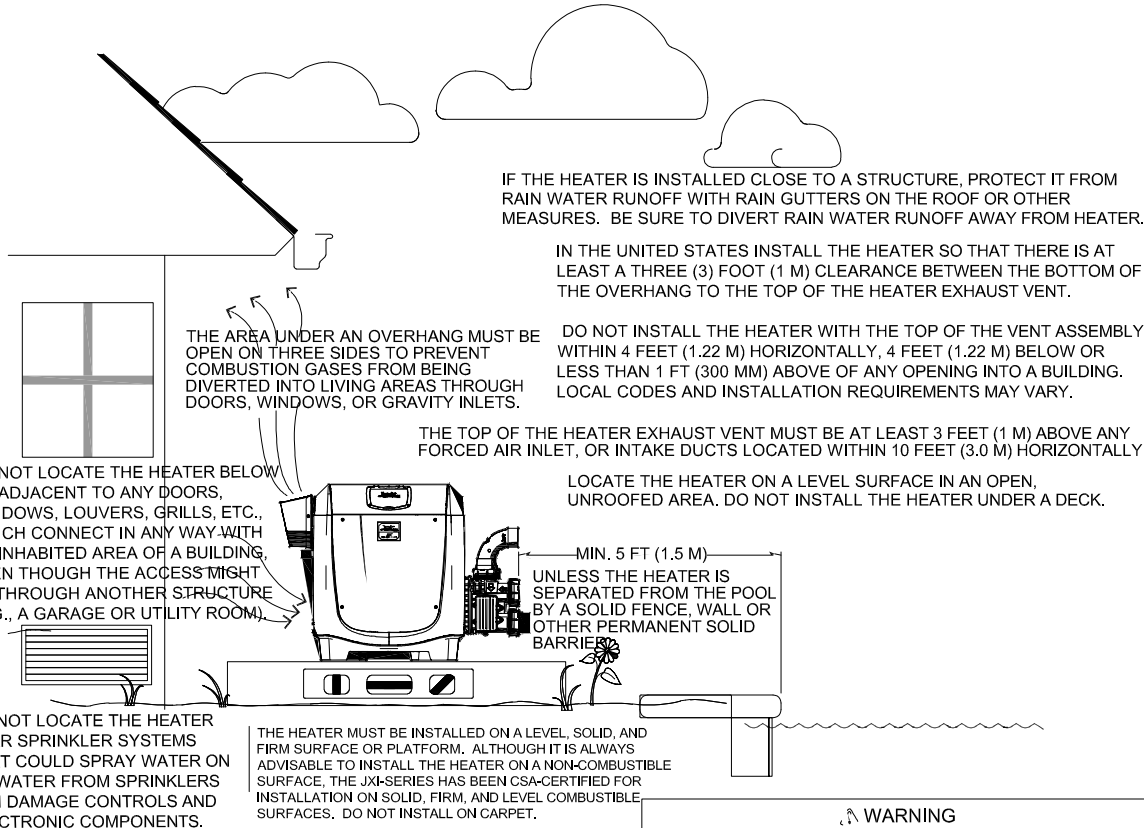
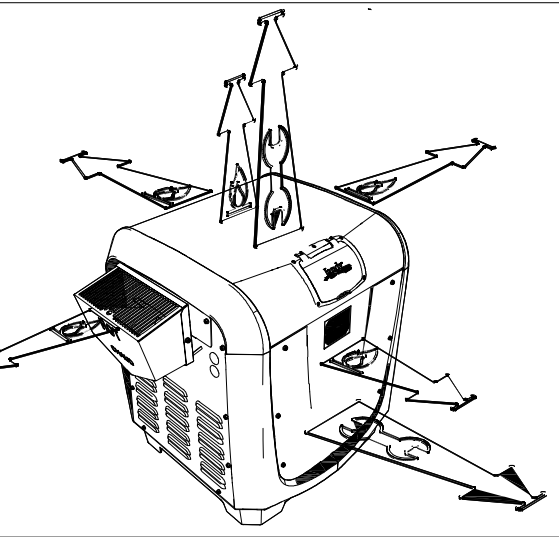


FIGURE 3

MINIMUM CLEARANCE REQUIREMENTS

- TOP SERVICE CLEARANCE - 36" (92 CM) FROM TOP OF HEATER FOR REMOVAL OF SERVICE PANEL.
- FRONT SERVICE CLEARANCE - 18" (46 CM) FROM PANEL @ CONTROL SCREEN SIDE
- 6" CLEARANCE TO ALL COMBUSTIBLE SURFACES
- HOLD 5' MIN TO INNER POOL EDGE, UNLESS SEPARATED BY A WALL OR OTHER PERMANENT SOLID BARRIER
- DO NOT PLACE UNDER A DECK OR OTHER STRUCTURE
- TOP OF HEATER/VENT TO HOLD 36" MIN. BELOW ANY OVERHANG
- TOP OF HEATER IS 36" MIN. ABOVE ANY FORCED AIR INLET WITHIN 10'
- DO NOT INSTALL TOP OF VENT ASSEMBLY WITHIN 4' HORIZ. OR 4' BELOW OR LESS THAN 1' ABOVE NAY OPENING INTO A BUILDING. LOCAL CODES MAY VARY.

EXTERIOR VENTING AND AIR INTAKE

THE JXI MUST BE VENTED TO THE OUTDOORS. IT MUST NOT BE VENTED IN COMMON WITH ANY OTHER APPLIANCE, EVEN IF THAT APPLIANCE IS OF THE CONDENSING TYPE. COMMON VENTING CAN RESULT IN SEVERE

CORROSION OF THE JXI OR OF THE OTHER APPLIANCES OR THEIR VENTING, OR ESCAPE OF COMBUSTION PRODUCT GASES THROUGH SUCH APPLIANCES OR VENTS. DO NOT VENT THE JXI TO A FIREPLACE CHIMNEY OR BUILDING CHASE. COMBUSTION AIR DUCTING, WHEN PROVIDED, MUST NOT BE SHARED WITH ANY OTHER APPLIANCE OR WITH ANOTHER JXI. DOING SO MAY RESULT IN FLOW OF AIR THROUGH THE OTHER APPLIANCES INSTEAD OF DIRECTLY FROM THE OUTDOORS. THE COMBUSTION AIR INTAKE AND VENT OUTLET MUST BE LOCATED EXTERIOR TO THE BUILDING AND IN THE SAME PRESSURE ZONE - I.E. BOTH THROUGH THE ROOF OR BOTH THROUGH A SIDE WALL. THE VENT TERMINAL MUST BE LOCATED IN ACCORDANCE WITH LOCAL CODES, AS APPLICABLE, AND IN ACCORDANCE WITH THE FOLLOWING:

- LOCATE THE VENT TERMINAL SO THAT IT WILL NOT BE DAMAGED BY PEDESTRIANS AND OTHER TRAFFIC, AND SO THAT THE DISCHARGE IS NOT OFFENSIVE. THE NATIONAL FUEL GAS CODE REQUIRES A THROUGH-WALL VENT TERMINAL BE AT LEAST 7 FEET (2.13 M) ABOVE GRADE IF LOCATED AT A PUBLIC WALKWAY.
- LOCATE THE VENT TERMINAL SO THE VENT EXHAUST DOES NOT SETTLE ON BUILDING SURFACES AND OTHER NEARBY OBJECTS. VENT PRODUCTS MAY CORRODE SUCH SURFACES OR OBJECTS.

- LOCATE THE VENT TERMINAL AT A SUFFICIENT HORIZONTAL DISTANCE FROM ANY GAS OR ELECTRIC METERING, REGULATING OR RELIEF EQUIPMENT. IN THE UNITED STATES, THIS DISTANCE MUST BE AT LEAST 4 FEET (1.22 M). IN CANADA, IT MUST BE AT LEAST 10 FEET (3.05 M).
 - LOCATE THE VENT TERMINAL AT A SUFFICIENT HORIZONTAL DISTANCE FROM ANY BUILDING OPENING. TAKE SPECIAL CARE TO ASSURE THAT COMBUSTION PRODUCTS DO NOT ENTER A BUILDING THROUGH WINDOWS, DOORS, VENTILATION INLETS, ETC. IN THE UNITED STATES, THIS DISTANCE MUST BE AT LEAST 4 FEET (1.21 M). IN CANADA, IT MUST BE AT LEAST 10 FEET (3.04 M).
- AS SHOWN IN FIGURE 5 AND FIGURE 6, THE COMBUSTION AIR INTAKE AND THE VENT OUTLET MUST BE INSTALLED NO CLOSER TOGETHER THAN 18 IN (45.7CM) AND NO FARTHER APART THAN 60 IN (1.5M). THE COMBUSTION AIR INLET OPENING MUST FACE DOWNWARD TO PREVENT ENTRY OF RAIN OR SNOW. THE VENT OUTLET MUST DISCHARGE AWAY FROM THE COMBUSTION AIR INLET - NORMALLY IN A HORIZONTAL DIRECTION WHEN ON A WALL AND VERTICALLY UPWARD WHEN ON A ROOF. BOTH SHOULD TERMINATE AT LEAST 12 IN (30.5CM) ABOVE THE SNOW ACCUMULATION LEVEL. IN LOCATIONS WITH FREEZING CLIMATE, EXTENSION OF THE VENT PIPE OUTSIDE OF THE BUILDING SHOULD BE MINIMIZED.

THIS SHEET CONTAINS GENERAL INFORMATION ONLY, PLEASE REFERENCE INSTALLATION MANUAL(S) FOR ANY ADDITIONAL DATA REQUIRED

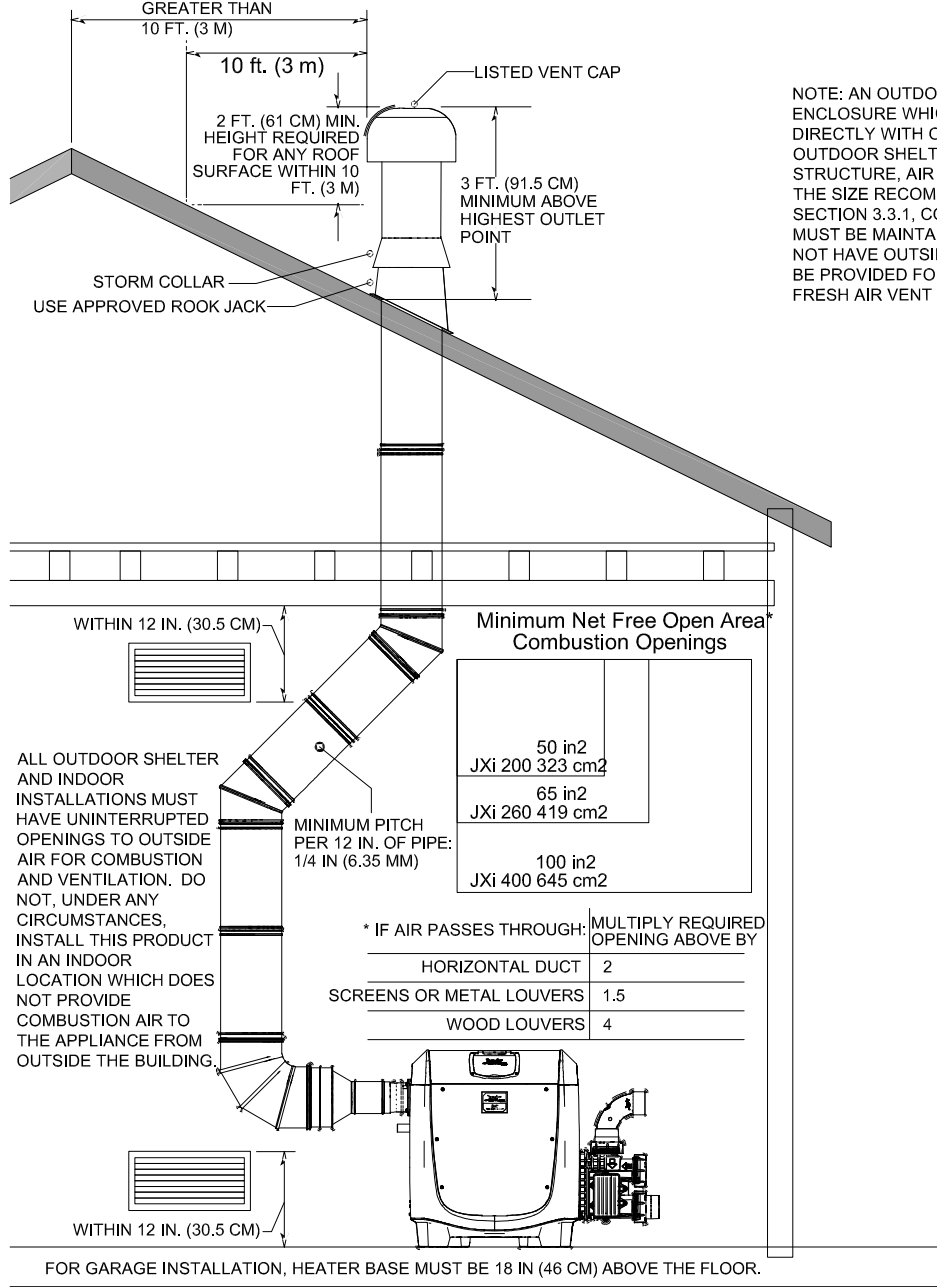


FIGURE 4

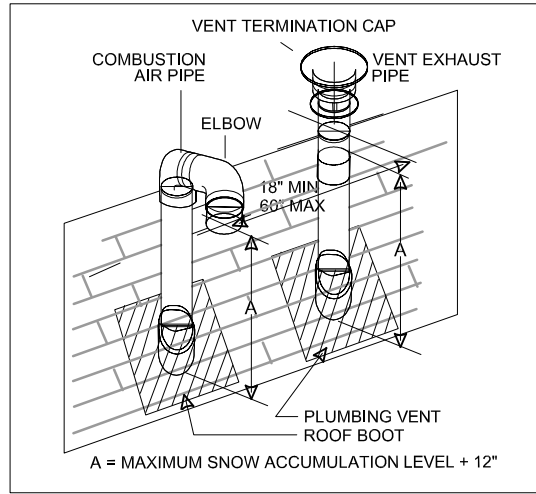


FIGURE 5

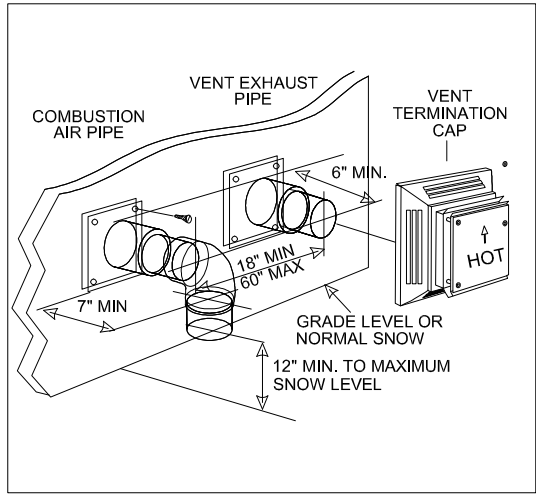


FIGURE 6

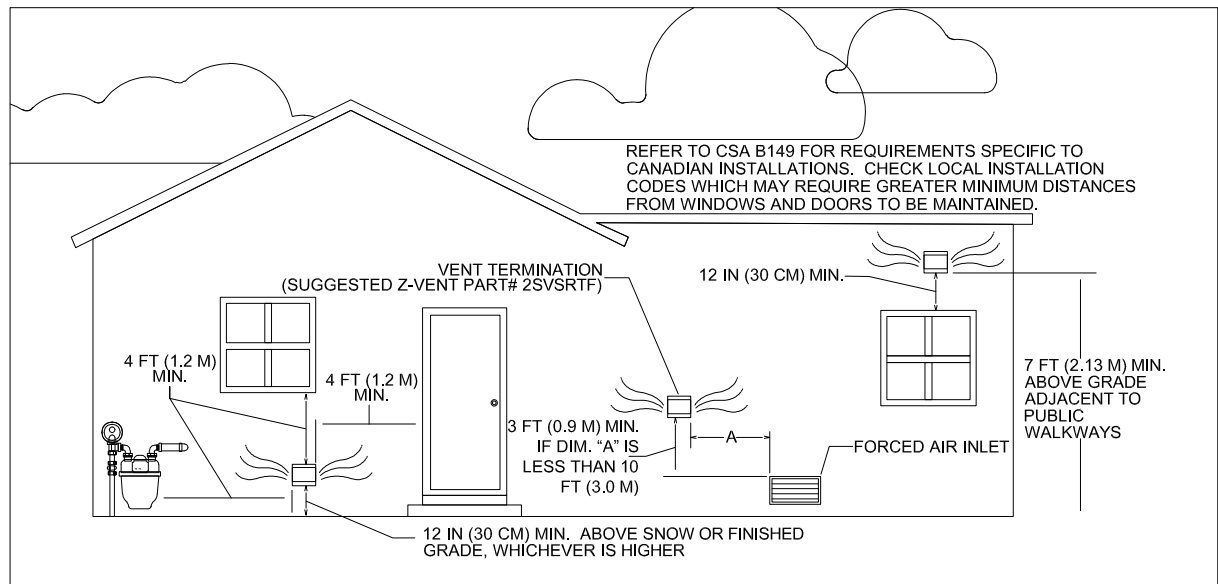


FIGURE 7

NOTE: AN OUTDOOR SHELTER IS AN UNOCCUPIED ENCLOSURE WHICH DOES NOT COMMUNICATE DIRECTLY WITH OCCUPIED AREAS. IF THE OUTDOOR SHELTER IS A COMPLETELY CLOSED STRUCTURE, AIR OPENINGS IN ACCORDANCE WITH THE SIZE RECOMMENDATIONS DESCRIBED IN SECTION 3.3.1, COMBUSTION INTAKE AIR SUPPLY MUST BE MAINTAINED. IF THE STRUCTURE DOES NOT HAVE OUTSIDE AIR OPENINGS THEN AIR MUST BE PROVIDED FOR COMBUSTION BY USING OUR FRESH AIR VENT KIT.

EXHAUST VENTING

WHEN THE JXI HEATER IS INSTALLED INDOORS (US ONLY) OR IN AN OUTDOOR SHELTER IT CAN BE VENTED AS A CATEGORY I OR CATEGORY III APPLIANCE. IN EITHER CASE, THE VENT PIPE SIZING MUST BE IN ACCORDANCE WITH THE SPECIFICATIONS LISTED IN TABLE 1. CATEGORY III IS REQUIRED FOR INDOOR INSTALLATION IN CANADA. FOR CASES WHEN THE HEATER IS INSTALLED OUTDOORS AND THERE IS CONCERN OVER EXTREME WEATHER CONDITIONS, WE ALSO PROVIDE THE OPTION OF ADDING CATEGORY III VENTING PER THE SPECIFICATIONS LISTED IN TABLE 1.IT IS RECOMMENDED THAT ALL VENTING BE ENGINEERED BY A LICENSED MECHANICAL CONTRACTOR.

- CATEGORY I: APPLIANCE OPERATES WITH A NEGATIVE VENT STATIC PRESSURE, A VENT GAS TEMPERATURE THAT AVOIDS EXCESSIVE CONDENSATE PRODUCTION AND WILL VENT VERTICALLY TERMINATING AT THE ROOF. VENTING MATERIALS FOR CATEGORY I MUST BE TYPE B DOUBLE WALL VENT. CATEGORY I IS NOT APPROVED FOR INDOOR INSTALLATION IN CANADA.
- CATEGORY III: APPLIANCE OPERATES WITH A POSITIVE VENT STATIC PRESSURE, A VENT GAS TEMPERATURE THAT AVOIDS EXCESSIVE CONDENSATE PRODUCTION AND CAN BE VENTED HORIZONTALLY TERMINATING AT A SIDE WALL.
- DO NOT TERMINATE HEATER VENTS NEAR AIR CONDITIONING OR AIR SUPPLY FANS WHICH COULD PICK UP EXHAUST FLUE PRODUCTS, SUCH AS CARBON MONOXIDE AND OTHER HAZARDOUS EFFLUENT, AND RETURN THEM INSIDE THE BUILDING.

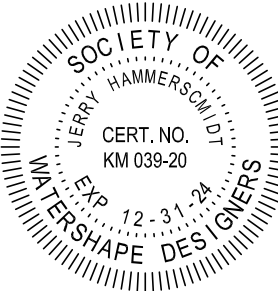
- VENT PIPE TYPE AND MATERIAL MUST BE CAREFULLY SELECTED AND DEPENDS ON THE TYPE OF INSTALLATION.
- DO NOT LOCATE THE VENT TERMINAL WHERE EXHAUST FLUE PRODUCTS COULD STRIKE AGAINST BUILDING MATERIALS AND CAUSE DEGRADATION.
- VENT OPENING SHOULD BE WELL AWAY FROM LANDSCAPING OR OTHER OBSTRUCTIONS THAT WOULD PREVENT FREE AIR FLOW TO AND FROM VENT TERMINAL.
- DO NOT TERMINATE VENT UNDER DECKS, STAIRS, OR CAR PORTS.
- DO NOT USE THE APPLIANCE TO SUPPORT THE VENT PIPE.
- VENT PIPING MUST BE SUPPORTED WITH NO LOW SPOTS OR SAGGING WHICH COULD ALLOW CONDENSATE TO COLLECT.
- HORIZONTAL RUNS MUST BE SLOPED UPWARDS AWAY FROM THE HEATER TO A VENT TERMINAL AT A MINIMUM OF 1/4 IN PER HORIZONTAL FOOT (2 CM/M). SEE FIGURE 4.
- INSTALL THE VENT PIPE SO IT CAN EXPAND AND CONTRACT FREELY WITH TEMPERATURE CHANGES.
- DO NOT RUN THE HEATER VENT INTO A COMMON VENT WITH ANY OTHER APPLIANCE.
- IT IS RECOMMENDED THAT VENT RUNS OVER 18 FEET BE INSULATED TO REDUCE CONDENSATION AND USE A CONDENSATE TRAP IN THE VENT RUN CLOSE TO THE HEATER, ESPECIALLY IN COLD CLIMATE INSTALLATIONS. WHEN USING CATEGORY III VENT MATERIAL, IT IS ACCEPTABLE TO USE A LARGER DIAMETER PIPE SIZE IF NEEDED. ‡
- FOR HEATERS INSTALLED OUTDOORS WHERE THERE IS CONCERN OVER EXTREME WEATHER CONDITIONS, CATEGORY III VENTING WITH APPROVED VENT TERMINATION CAP CAN BE INSTALLED AS NOTED IN TABLE 1 AND SECTION 3.3.8. OUTDOOR HEATER INSTALL WITH VENTING FOR EXTREME WEATHER CONDITIONS. ‡

GAS PIPE SIZE REQUIREMENT:									
NATURAL GAS 1000BTU/FT3 — 0.60 SPECIFIC GRAVITY @ 0.5 IN. W.C. PRESSURE DROP									
PROPANE GAS 2500BTU/FT3 — 1.53 SPECIFIC GRAVITY @ 0.5 IN. W.C. PRESSURE DROP									
		3/4"		1"		1-1/4"		1-1/2"	
MODEL		NG	LP	NG	LP	NG	LP	NG	LP
JXI260		15 ft	35 ft	50 ft	125 ft	210 ft	480 ft	445 ft	
JXI400		*	15 ft	20 ft	55 ft	95 ft	225 ft	215 ft	480 ft
* A 3/4" GAS LINE CAN BE USED FOR UP TO 5 FEET MAXIMUM LENGTH FROM THE GAS VALVE IN ADDITION TO THE SEDIMENT TRAP.									

UTILITY REQUIREMENTS:

PUMPS:					
MODEL/ NAME		H.P.	VOLTAGE	AMP DRAW	
VSSH220DV2A JANDY ePUMP w/o CONTROLLER		2.2 HP	230/115	10.5/16.0	
AQUAMATIC AUTOCOVER PUMP		3/4 H.P.	115/ 230	11.6/ 5.8	
LIGHTS:					
MODEL/ NAME		WATTS	VOLTAGE	AMP DRAW	
64-EGLCW-80 - PAL MULTI COOL WHT LIGHT		30	24	1.25	
64-EGLCW-80 - PAL MULTI COOL WHT LIGHT		30	24	1.25	
HEATERS:					
MODEL/ NAME		BTU	VOLTAGE	AMP DRAW	
JXI400NK - JANDY JXI POOL HEATER 400 - NAT. GAS W/ VERSAFLO		400K	120-240	.5 - 2.5	
FILTERS:					
MODEL/ NAME		TYPE	AREA SF	FLOW RATE	
CV340 - CV CARTRIDGE FILTER		CARTRIDGE	340 SQFT	127 GPM	
CHLORINATOR:					
MODEL/ NAME		DOSING RATE	TREATED POOL SIZE		
TCLOFFCGB20 - TRUCLOR EROSION FEEDER - OFF-LINE		20-50 GPM	5,000 - 50,000 GAL		

MASTER POOLS by
high-tech pools inc.
31330 Industrial Parkway
Cleveland, Ohio 44070
www.hightechpools.com
(440) 979-5070
(440) 979-5076-fax



CONSTRUCTION DOCUMENTS

Schlosser Residence
1960 WYNWOOD DRIVE
ROCKY RIVER, OH 44116

POOL: 104 .2455 .576 .18,526 .1,023 .51
SPA:
* :

REV #1:

REV #2:

REV #3:

REV #4:

REV #5:

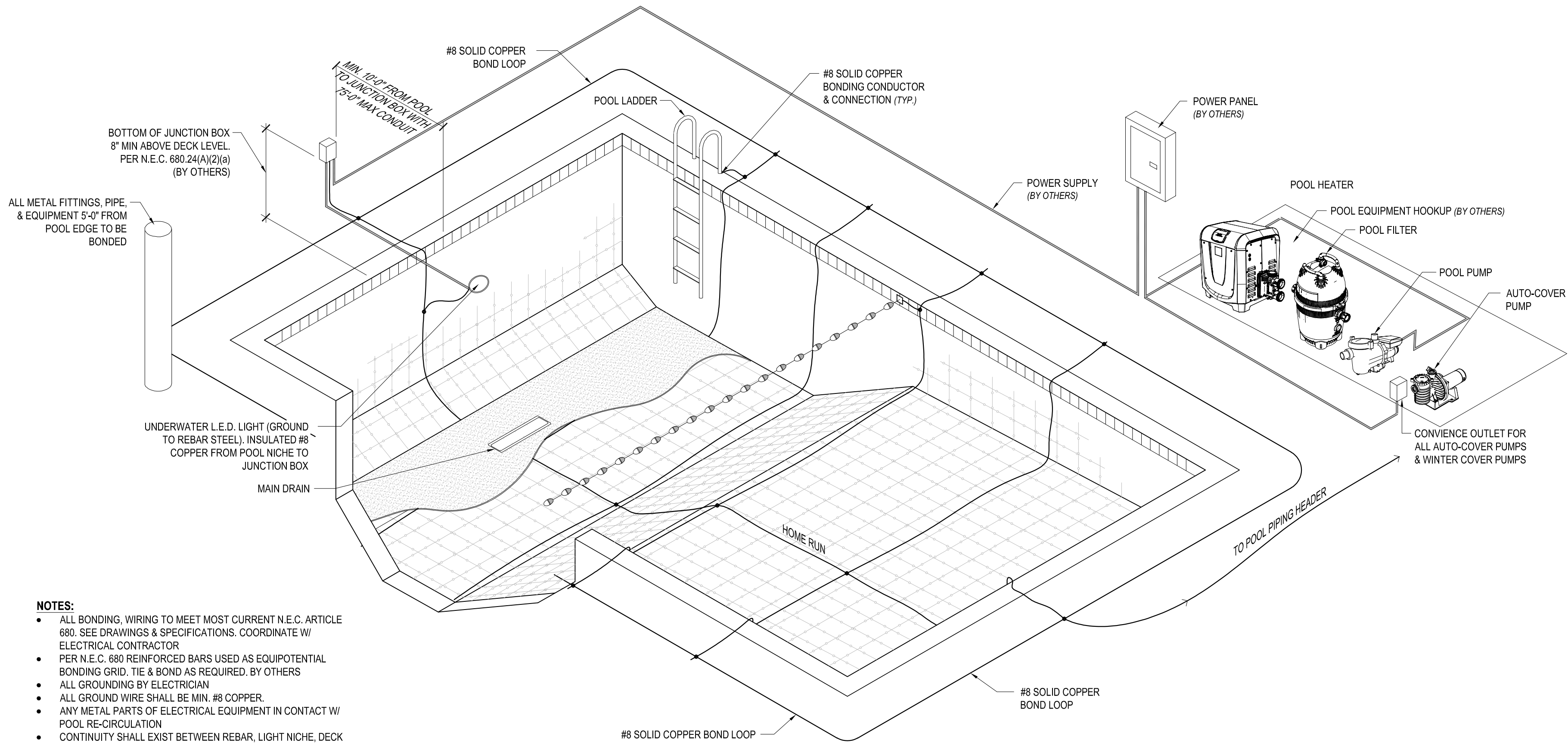
REV #6:

SALES:
DESIGN:
CONST:

AQUATIC UTILITY REQUIREMENTS

AQ-500

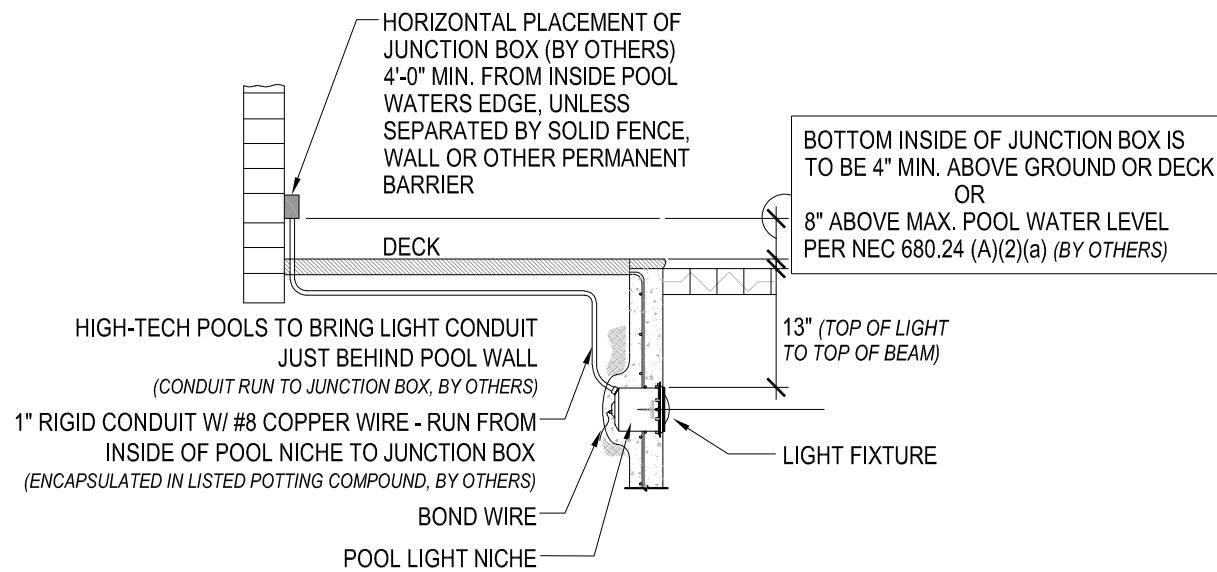
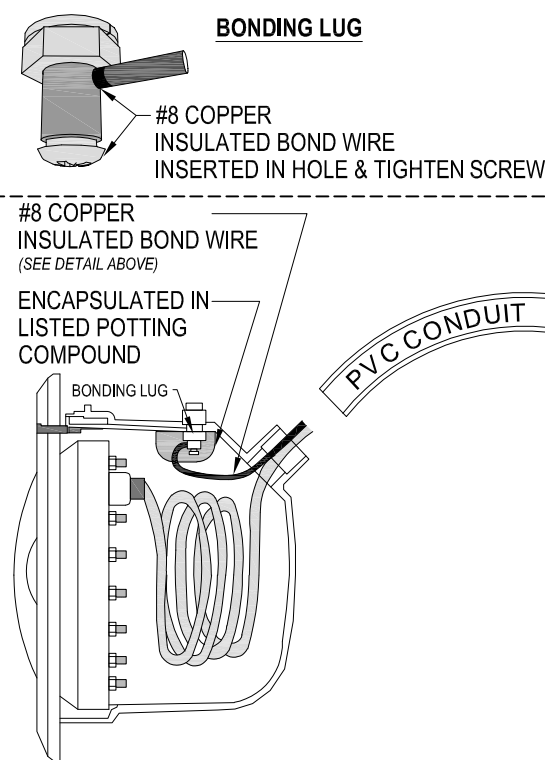
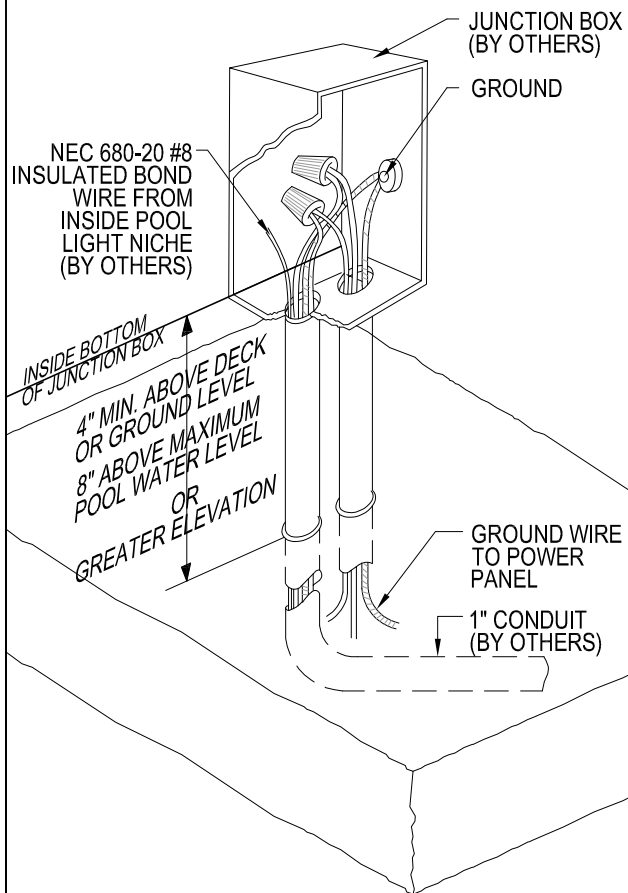
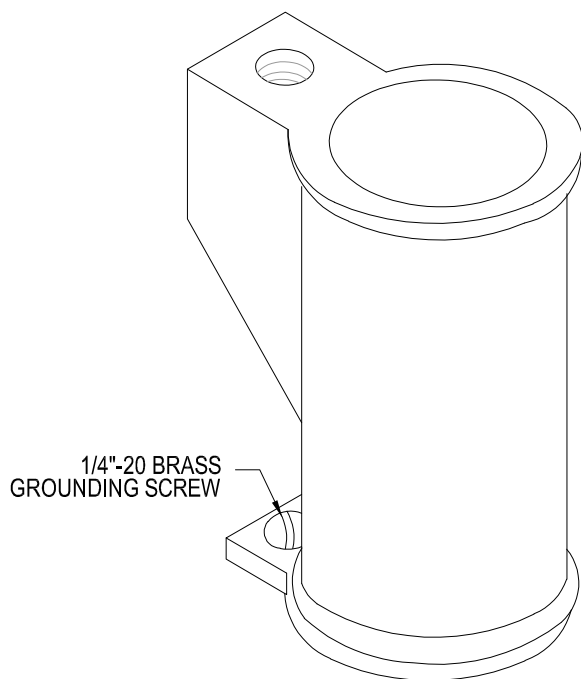
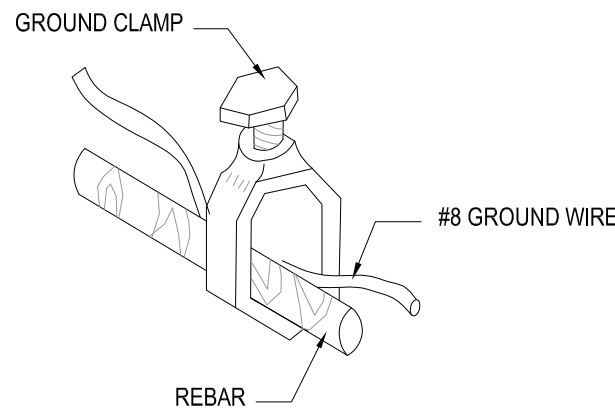
This document and the ideas, renderings and contents contained herein are the sole property of High-Tech Pools, Inc.
This document may not be disseminated, copied, distributed, reproduced or otherwise used without prior written consent, 2024 ©
SCHLOSSER, 3455 BOWLING DATE PRINTED 9/12/2024 12:34 PM, PRINTED BY KARA PALLES



NOTES:

- ALL BONDING, WIRING TO MEET MOST CURRENT N.E.C. ARTICLE 680. SEE DRAWINGS & SPECIFICATIONS. COORDINATE W/ ELECTRICAL CONTRACTOR
- PER N.E.C. 680 REINFORCED BARS USED AS EQUIPOTENTIAL BONDING GRID. TIE & BOND AS REQUIRED. BY OTHERS
- ALL GROUNDING BY ELECTRICIAN
- ALL GROUND WIRE SHALL BE MIN. #8 COPPER.
- ANY METAL PARTS OF ELECTRICAL EQUIPMENT IN CONTACT W/ POOL RE-CIRCULATION
- CONTINUITY SHALL EXIST BETWEEN REBAR, LIGHT NICHE, DECK EQUIPMENT AND PUMP GROUND TERMINAL VIA #8 COPPER WIRE.
- ALL ELECTRICAL FIXTURES TO BE U.L. APPROVED
- ELECTRICIAN MUST VERIFY ALL WIRING & GROUNDING MEETS N.E.C. STANDARDS.
- DRAWING(S) FOR REFERENCE ONLY**

* POOL BONDING - ISOMETRIC DETAIL



1 REBAR - ENLARGMENT

2 ANCHOR - ENLARGEMENT

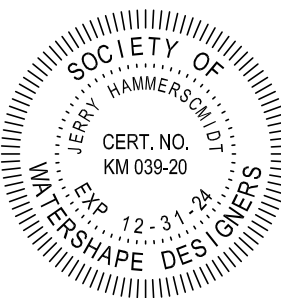
3 JUNCTION BOX - ENLARG.

4 LIGHT BONDING - SECTION

5 LIGHT FIXTURE BONDING - SECTION

SCALE: 1 1/2" = 1'-0"

MASTER POOLS by
high-tech pools inc.
(440) 979-5070
(440) 979-5076-fax
31330 Industrial Parkway
Cleveland, Ohio 44070
www.hightechpools.com



CONSTRUCTION DOCUMENTS

Schlosser Residence
1960 WYNWOOD DRIVE
ROCKY RIVER, OH 44116

POOL: 104 . 2455 . 576 . 18,526 . 1,023 . 51
SPA:
- :

REV #1:

REV #2:

REV #3:

REV #4:

REV #5:

REV #6:

SALES:
DESIGN:
CONST:

AQUATIC BONDING DETAIL

AQ-600

This document and the ideas, renderings and contents contained herein are the sole property of High-Tech Pools, Inc.
This document may not be disseminated, copied, distributed, reproduced or otherwise used without prior written consent, 2024 ©
SCHLOSSER_AQUA BUILDING DATE PRINTED: 9/12/2024 12:34 PM / PRINTED BY: KARA POLES