

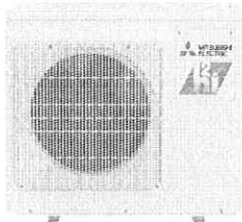
MXZ-2D20NLHZ

20,000 BTU/H HYPER HEAT PUMP OUTDOOR UNIT

Job Name:

System Reference:

Date:



GENERAL FEATURES

- **INVERTER-driven compressor:** An inverter-driven compressor generates the precise capacity needed to maintain a temperature set point.
- **Thermal Differential 1°F**
- **Seacoast protection:** Seacoast protection on heat exchanger and base panel (rated for 2,000 hrs. in accordance with ASTM B117 testing)
- **Quiet operation:** Outdoor units are as quiet as a typical conversation, and most indoor units are whisper quiet.
- **Hyper-Heating INVERTER[®]:** Hyper-heating performance offers 100% heating capacity at 5°F and 75% heating capacity at -13°F
- **Fan motor overheating/voltage protection**
- **Compressor thermal protection**
- **Compressor overcurrent detection**
- **Built-in base pan heater**
- **High pressure protection**

Specifications		System	
Unit Type		MXZ-2D20NLHZ	
Cooling at 95F ¹ (Non-Ducted // Mixed // Ducted)	Maximum Capacity	Btu/h	20,000 // 20,000 // 20,000
	Rated Capacity	Btu/h	18,000 // 19,000 // 20,000
	Minimum Capacity	Btu/h	11,600 // 13,800 // 16,000
	Maximum Power Input	W	2,660 // 2,340 // 2,000
	Rated Power Input	W	1,333 // 1,568 // 1,802
	Power Factor (208V)	%	0.99 // 0.99 // 0.99
	Power Factor (230V)	%	0.99 // 0.99 // 0.99
Heating at 47F ² (Non-Ducted // Mixed // Ducted)	Maximum Capacity	Btu/h	25,500 // 25,500 // 25,500
	Rated Capacity	Btu/h	22,000 // 22,000 // 22,000
	Minimum Capacity	Btu/h	11,400 // 13,850 // 16,300
	Maximum Power Input	W	2,400 // 2,520 // 2,640
	Rated Power Input	W	1,612 // 1,650 // 1,688
	Power Factor (208V)	%	0.99 // 0.99 // 0.99
	Power Factor (230V)	%	0.99 // 0.99 // 0.99
Heating at 17F ³ (Non-Ducted // Mixed // Ducted)	Maximum Capacity	Btu/h	22,000 // 22,000 // 22,000
	Rated Capacity	Btu/h	14,300 // 13,400 // 12,500
	Maximum Power Input	W	3,300 // 3,325 // 3,350
Heating at 5F ⁴ (Non-Ducted // Mixed // Ducted)	Rated Power Input	W	1,518 // 1,501 // 1,510
	Maximum Capacity	Btu/h	22,000 // 22,000 // 22,000
Heating at -13F ⁵ (Non-Ducted // Mixed // Ducted)	Maximum Power Input	W	3,220 // 3,256 // 3,256
	Maximum Capacity	Btu/h	19,200 // 19,200 // 19,200
Efficiency (Non-Ducted // Mixed // Ducted)	Maximum Power Input	W	2,622 // 2,622 // 2,622
	SEER2 ¹		19.30 // 16.80 // 14.30
	EER2 ¹		13.50 // 12.30 // 11.10
	HSPF2 (IV) ²		10 // 8.95 // 7.90
	COP at 47°F ²		4.00 // 3.90 // 3.82
	COP at 17°F at Maximum Capacity ³		1.94 // 1.92 // 1.92
	COP at 5°F at Maximum Capacity ⁴		2 // 1.98 // 1.98
ENERGY STAR [®] Certified		Yes // Yes // No	
Electrical	Electrical Power Requirements	V AC / V AC, ∅, Hz	208 / 230, 1, 60
	Guaranteed Voltage Range	V AC	198 - 253
	Voltage: Indoor - Outdoor, S1-S2	V AC	208/230
	Voltage: Indoor - Outdoor, S2-S3	V DC	24
	Recommended Wire Size (Indoor - Outdoor)	AWG	14
	Short-circuit Current Rating (SCCR)	kA	5
	Recommended Fuse/Breaker Size	A	20
	MCA	A	21.7
MOCP	A	38	

NOTES

- ¹Cooling at 95°F (Indoor: 80°F DB, 67°F WB // Outdoor: 95°F DB, 75°F WB)
- ²Heating at 47°F (Indoor: 70°F DB, 60°F WB // Outdoor: 47°F DB, 43°F WB)
- ³Heating at 17°F (Indoor: 70°F DB, 60°F WB // Outdoor: 17°F DB, 15°F WB)
- ⁴Heating at 5°F (Indoor: 70°F DB, 60°F WB // Outdoor: 5°F DB, 4°F WB)
- ⁵Heating at -13°F (Indoor: 70°F DB, 60°F WB // Outdoor: -13°F DB, -14°F WB)
- Capacity varies based on the number of indoor units operating and the model of the Multi-zone Outdoor Unit. For reference to connected capacity charts, please refer to Multi-zone Outdoor Unit Operational Performance.
- For actual capacity performance based on indoor unit type and number of indoor units connected, please refer to MXZ Operational Performance.
- Although the maximum connectable capacity is 130%, the outdoor unit cannot provide more than 100% of the rated capacity.
- Please utilize this over capacity capability for load shedding or applications where it is known that all connected units will NOT be operating at the same time.
- ¹ Indoor/Outdoor Unit Operating Temperature Range (Cooling Air Temp [Maximum / Minimum]):
- Applications should be restricted to comfort cooling only, equipment cooling applications are not recommended for low ambient temperature conditions.
 - Outdoor Unit Operating Temperature Range (Cooling Thermal Lock-out / Re-start Temperatures; Heating Thermal Lock-out / Re-start Temperatures):
 - System cuts out in heating mode and automatically restarts at these temperatures.

SPECIFICATIONS: MXZ-2D20NLHZ

Specifications		System	
Unit Type		MXZ-2D20NLHZ	
Outdoor Unit	Fan Motor Full Load Amperage	A	1.74
	Fan Motor Output	W	88
	Defrost Method		Reverse Cycle
	Blue Fin Heat Exchanger Coating		Yes
	Airflow Rate Cooling/Heating	CFM	2,119 / 2,228
	Sound Pressure Level, Cooling ¹	dB (A)	51
	Sound Pressure Level, Heating ²	dB (A)	53
	Compressor Type		Twin Rotary
	Compressor Model		SRB220FQYMC-L
	Compressor Oil Type // Charge	Type // oz	RM68EH // 20.3
	External Finish Color		Munsell 3.0Y 7.8/1.1
	Base Pan Heater		Built-in
	Unit Dimensions (W x D x H)	inch x inch x inch [mm x mm x mm]	37-13/32 x 13 x 31-11/32 [950 x 330 x 796]
	Package Dimensions (W x D x H)	inch x inch x inch [mm x mm x mm]	41-11/32 x 17-5/16 x 38-31/32 [1,050 x 440 x 990]
	Unit Weight	lbs [kg]	137 [62]
Package Weight	lbs [kg]	163 [74]	
ODU Operating Temp. Range	Cooling Intake Air Temp. (Maximum / Minimum) ³	°FDB	115 / 14
	Cooling Thermal Lock-out / Re-start Temperatures	°FDB	10 / 14
	Heating Intake Air Temp. [Maximum / Minimum]	°FDB, °FWB / °FDB	75, 65 / -13, -14
	Heating Thermal Lock-out / Re-start Temperatures**	°FDB	-22.5 / -14
Refrigerant	Type		R454B
	Pre-Charged Refrigerant Amount	lbs, oz	5, 5
	Maximum Pre-Charged Piping Length	ft	164
IDU Connection	Minimum Number of Connected IDU		2
	Maximum Number of Connected IDU		2
	Minimum Connected Capacity	Btu/h	12,000
	Maximum connected capacity	Btu/h	24,000
Piping	Liquid Pipe Size O.D. (Flared)	inch	A: 1/4 B: 1/4
	Gas Pipe Size O.D. (Flared)	inch	A: 3/8 B: 3/8
	Total Piping Length	ft [m]	164 [50]
	Farthest Piping Length	ft [m]	82 [25]
	Maximum Height Difference [†] , ODU above IDU	ft [m]	49 [15]
	Maximum Height Difference [‡] , ODU below IDU	ft [m]	49 [15]
	Maximum Number of Bends for IDU		50

NOTES

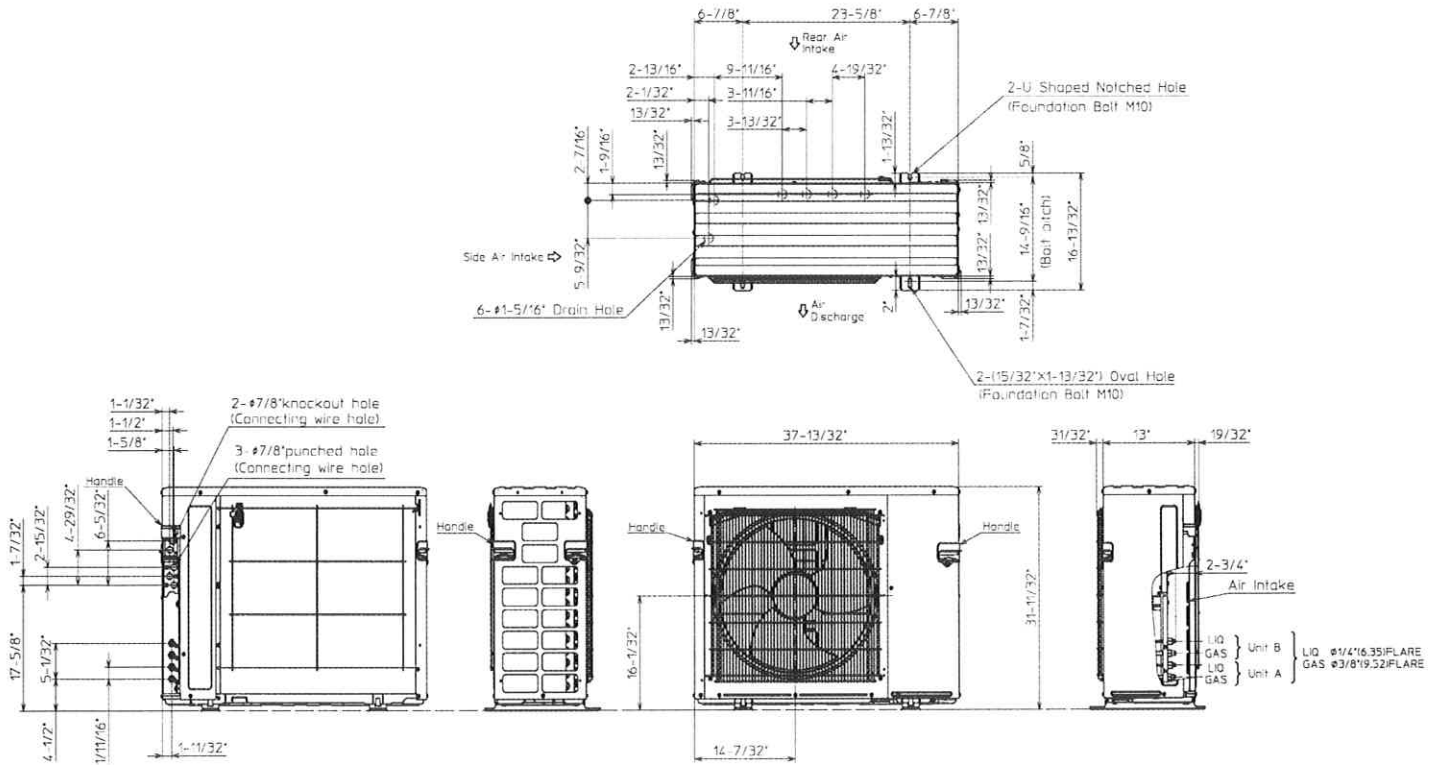
- ¹Cooling at 95°F (Indoor: 80°F DB, 67°F WB // Outdoor: 95°F DB, 75°F WB)
- ²Heating at 47°F (Indoor: 70°F DB, 60°F WB // Outdoor: 47°F DB, 43°F WB)
- ³Heating at 17°F (Indoor: 70°F DB, 60°F WB // Outdoor: 17°F DB, 15°F WB)
- ⁴Heating at 5°F (Indoor: 70°F DB, 60°F WB // Outdoor: 5°F DB, 4°F WB)
- ⁵Heating at -13°F (Indoor: 70°F DB, 60°F WB // Outdoor: -13°F DB, -14°F WB)
- Capacity varies based on the number of indoor units operating and the model of the Multi-zone Outdoor Unit. For reference to connected capacity charts, please refer to Multi-zone Outdoor Unit Operational Performance.
- For actual capacity performance based on indoor unit type and number of indoor units connected, please refer to MXZ Operational Performance.
- Although the maximum connectable capacity is 130%, the outdoor unit cannot provide more than 100% of the rated capacity.
- Please utilize this over capacity capability for load shedding or applications where it is known that all connected units will NOT be operating at the same time.
- [†] Indoor/Outdoor Unit Operating Temperature Range (Cooling Air Temp [Maximum / Minimum]):
- Applications should be restricted to comfort cooling only, equipment cooling applications are not recommended for low ambient temperature conditions.
- ^{**} Outdoor Unit Operating Temperature Range (Cooling Thermal Lock-out / Re-start Temperatures, Heating Thermal Lock-out / Re-start Temperatures):
- System cuts out in heating mode and automatically restarts at these temperatures.

OUTDOOR UNIT ACCESSORIES: MXZ-2D20NLHZ

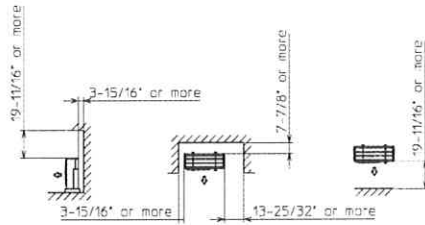
Ball Valve	Refrigeration Ball Valve - 1/2	BV12FFSI2
	Refrigeration Ball Valve - 1/4	BV14FFSI2
	Refrigeration Ball Valve - 3/8	BV38FFSI2
	Refrigeration Ball Valve - 5/8	BV58FFSI2
Stand	18 Single Fan Stand	QSMS1801M
	24 Single Fan Stand	QSMS2401M
	Condenser Wall Bracket	QSWB2000M-1
	Condenser Wall Bracket - Stainless Steel Finish	QSWBSS
	Outdoor Unit 3-14 inch Mounting Base Pair - Plastic	DSD-400P
	Outdoor Unit Stand 12 High	QSMS1201M
Port Adaptor	Adaptor 1/2 x 3/8	PAC-SK88RJ-E
	Adaptor 1/2 x 5/8	PAC-SK89RJ-E
	Adaptor 1/4 x 3/8	PAC-493PI
	Adaptor 3/8 x 1/2	ADP3812
	Adaptor 3/8 x 5/8	PAC-SK90RJ-E
Mini-Split Wire	14 Gauge 4 wire Armored MiniSplit Cable250 ft roll	SW144-250
	14 Gauge 4 wire Armored MiniSplit Cable50 ft roll	SW144-50
	14 Gauge 4 wire MiniSplit Cable250 ft roll	S144-250
	14 Gauge 4 wire MiniSplit Cable50 ft roll	S144-50
	16 Gauge 4 wire Armored MiniSplit Cable250 ft roll	SW164-250
	16 Gauge 4 wire Armored MiniSplit Cable50 ft roll	SW164-50
	16 Gauge 4 wire MiniSplit Cable250 ft roll	S164-250
	16 Gauge 4 wire MiniSplit Cable50 ft roll	S164-50
Mounting Pad	Condensing Unit Mounting Pad 16 x 36 x 3	ULTRILITE1
Drain Socket	Drain Socket	PAC-SG60DS-E
Hail Guards	Hail Guard	HG-A9
Snow/Rain Diverter	SnowRain Diverter	SRD-4
Control Interface	M-NET Interface for MXZ	PAC-IF01MNT-E
Air Outlet Guide	Air Outlet Guide 1 Piece	PAC-SH96SG-E
Control/Service Tool	Maintenance Tool Interface	PAC-USCMS-MN-1
NOTES		

OUTDOOR UNIT DIMENSIONS: MXZ-2D20NLHZ

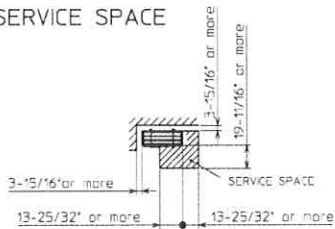
MXZ-2D20NLHZ-U1



1. FREE SPACE



2. SERVICE SPACE



1340 Satellite Boulevard Suwanee, GA 30024
Toll Free: 800-433-4822 <https://mitsubishicomfort.com>

