

Stratus

onestratus.com

888.503.1569

LOCATION NUMBER:

20914

SITE ADDRESS:

20914 Center Ridge Rd
Rocky River, OH
44116

[View in Google Maps](#)



University Hospitals
Urgent Care

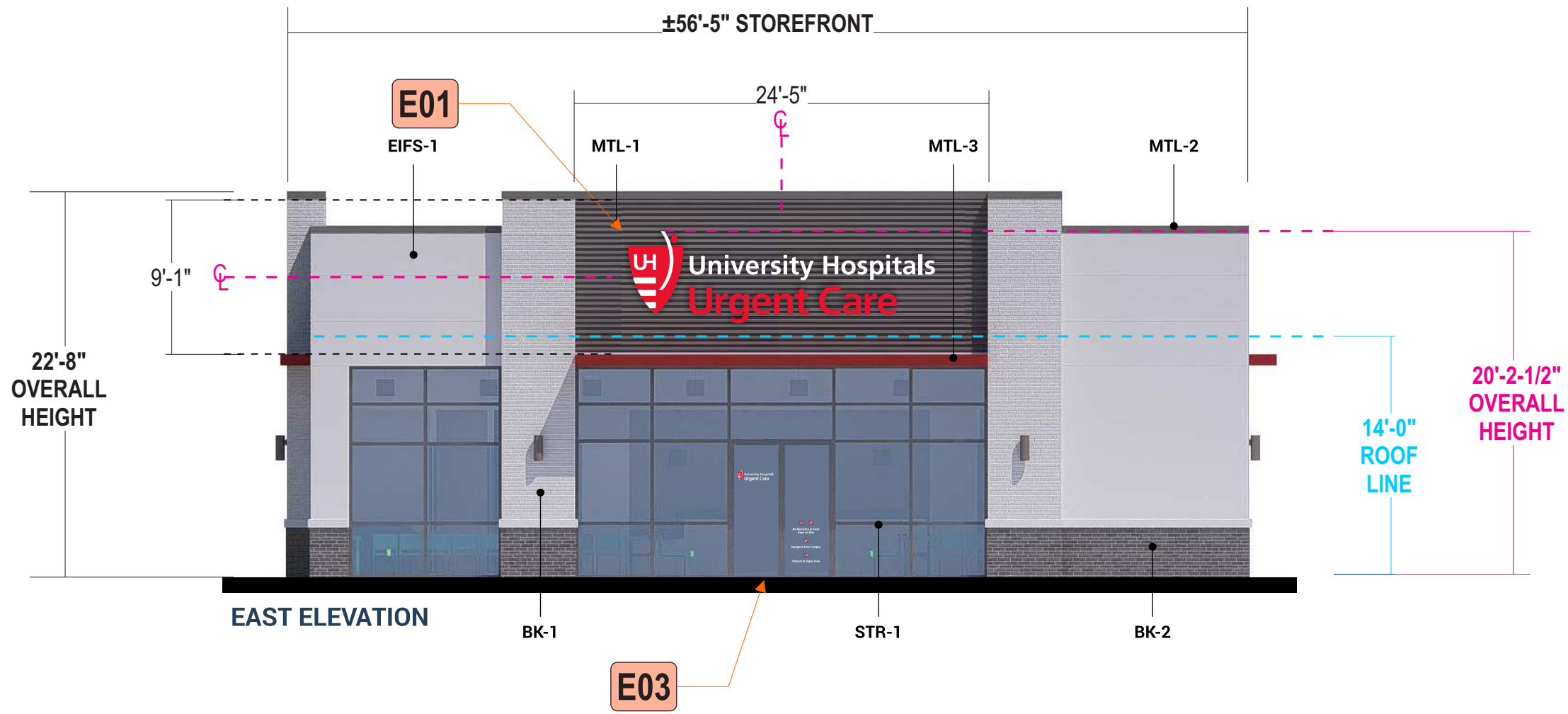
E01 FRONT (EAST) ELEVATION

Scale: 1/8"=1'-0"

PROPOSED SIGN SF: 88.5

ALL SIGN SIZES HAVE BEEN CALCULATED OFF ARCHITECTURAL PRINTS AS SHOWN

E03



Stratus
 onestratus.com
 8959 Tyler Boulevard
 Mentor, Ohio 44060
 888.503.1569

CLIENT: University Hospitals Urgent Care
 ADDRESS: 20914 CENTER RIDGE RD
 ROCKY RIVER, OH 44116
 PAGE NO.: 3

ORDER NUMBER: 1245282
 PROJECT NUMBER: 86536
 SITE NUMBER: 20914
 PROJECT MANAGER: LEE HUNTER
 ELECTRONIC FILE NAME: G:\ACCOUNTS\PIPIEDMONT URGENT CARE\2025\OH\20914_Rocky River\20914_Rocky River_Exterior_R12.cdr

Rev #	Req #	Date/Artist	Description	Rev #	Req #	Date/Artist	Description
Original	560776	10/28/25 KF		Rev 7	575772	01/26/26 BB	Revised elevation; revised sign and sign numbers
Rev 1	561866	11/04/25 KF	Increased size	Rev 8	575962	01/27/26 BB	Revised SF box
Rev 2	563411	11/10/25 KF		Rev 9	577296	02/04/26 BB	Revised to selected option (E01 package A)
Rev 3	564256	11/17/25 KF	Updated	Rev 10	578005	02/06/26 BB	Revised to new elevation
Rev 4	565257	11/20/25 JT		Rev 11	582425	03/04/26 BB	Revised to show new size based on confirmed measurement
Rev 5	565489	11/21/25 KW	Revised to white letters	Rev 12	584225	03/10/26 VAF	
Rev 6	565740	11/24/25 MC					

PRINTS ARE THE EXCLUSIVE PROPERTY OF STRATUS. THIS MATERIAL SHALL NOT BE USED, DUPLICATED, OR OTHERWISE REPRODUCED WITHOUT THE PRIOR WRITTEN CONSENT OF STRATUS.

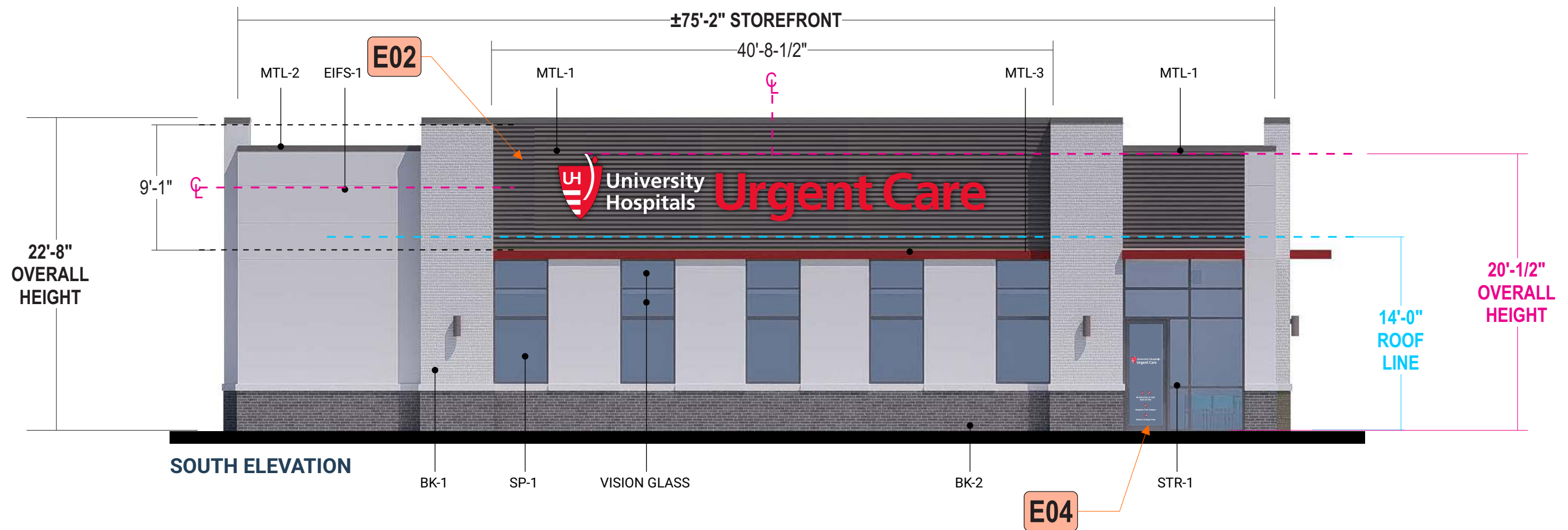
E02 LEFT (SOUTH) ELEVATION

Scale: 1/8"=1'-0"

PROPOSED SIGN SF: 147.1

ALL SIGN SIZES HAVE BEEN CALCULATED OFF ARCHITECTURAL PRINTS AS SHOWN

NOTE: LETTERS WILL FALL ABOVE ROOFLINE, POWER TO BE BROUGHT TO ROOF BY OTHERS STRATUS TO PROVIDE WIREWAY COVERS



Stratus

onstratus.com

8959 Tyler Boulevard
Mentor, Ohio 44060

888.503.1569

CLIENT:
**University Hospitals
Urgent Care**

ADDRESS:
20914 CENTER RIDGE RD
ROCKY RIVER, OH 44116

ORDER NUMBER:
1245282

SITE NUMBER:
20914

ELECTRONIC FILE NAME:
G:\ACCOUNTS\PIEDMONT URGENT CARE\2025\OH\20914_Rocky River\
20914_Rocky River_Exterior_R12.cdr

PROJECT NUMBER:
86536

PROJECT MANAGER:
LEE HUNTER

PAGE NO.:
5

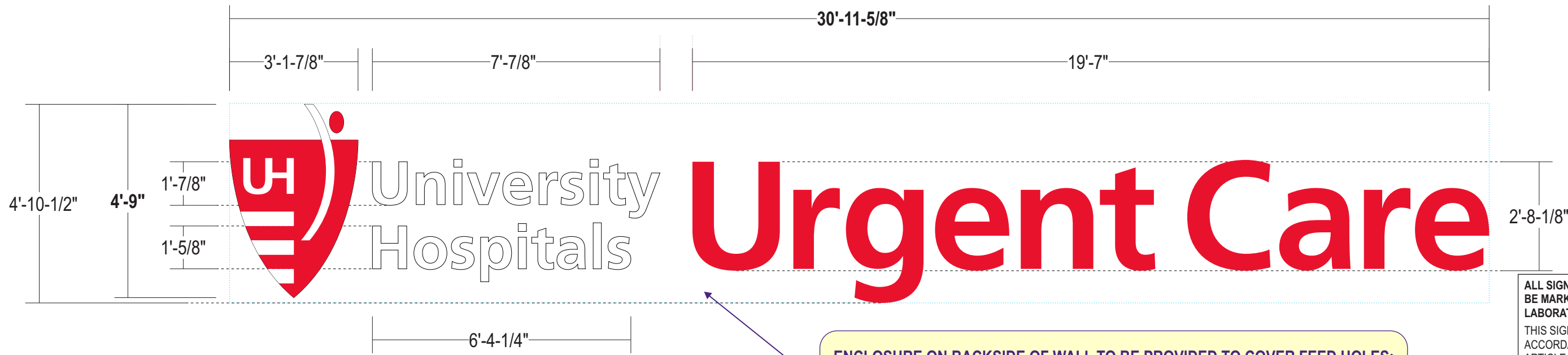
Rev #	Req #	Date/Artist	Description	Rev #	Req #	Date/Artist	Description
Original	560776	10/28/25 KF		Rev 7	575772	01/26/26 BB	Revised elevation; revised sign and sign numbers
Rev 1	561866	11/04/25 KF	Increased size	Rev 8	575962	01/27/26 BB	Revised SF box
Rev 2	563411	11/10/25 KF		Rev 9	577296	02/04/26 BB	Revised to selected option (E02 package D)
Rev 3	564256	11/17/25 KF	Updated	Rev 10	578005	02/06/26 BB	Revised to new elevation
Rev 4	565257	11/20/25 JT		Rev 11	582425	03/04/26 BB	Revised to show new size based on confirmed measurement
Rev 5	565489	11/21/25 KW		Rev 12	584225	03/10/26 VAF	
Rev 6	565740	11/24/25 MC					

PRINTS ARE THE EXCLUSIVE PROPERTY OF STRATUS. THIS MATERIAL SHALL NOT BE USED, DUPLICATED, OR OTHERWISE REPRODUCED WITHOUT THE PRIOR WRITTEN CONSENT OF STRATUS.

E02 FACE LIT CHANNEL LETTERS
Scale: 3/8" = 1'-0"

CUSTOM UHUC-L-FL-57
147.1 square feet

ALL SIGN SIZES HAVE BEEN CALCULATED OFF ARCHITECTURAL PRINTS AS SHOWN



NOTE: LETTERS WILL FALL ABOVE ROOFLINE, POWER TO BE BROUGHT TO ROOF BY OTHERS STRATUS TO PROVIDE WIREWAY COVERS

ENCLOSURE ON BACKSIDE OF WALL TO BE PROVIDED TO COVER FEED HOLES; EXACT DIMENSIONS TO BE VERIFIED PRIOR TO PRODUCTION

ALL SIGNS TO COMPLY WITH UL 48 AND WILL BE MARKED AS SUCH WITH APPROPRIATE LABORATORY LABELS.

THIS SIGN IS INTENDED TO BE INSTALLED IN ACCORDANCE WITH THE REQUIREMENTS OF ARTICLE 600 OF THE NATIONAL ELECTRICAL CODE AND/OR OTHER APPLICABLE LOCAL CODES. THIS INCLUDES PROPER GROUNDING AND BONDING OF THE SIGN.

THE LOCATION OF THE DISCONNECT SWITCH AFTER INSTALLATION SHALL COMPLY WITH ARTICLE 600.6(A) (1) OF THE NATIONAL ELECTRIC CODE.

FACES: LOGO: 3/16" white polycarbonate with surface applied trans. red vinyl
LETTERS: 3/16" # 7328 white acrylic

TRIMCAP: LOGO: 2" standard black jewelite trimcaps
LETTERS: 1" standard black jewelite trimcaps

RETURNS: 5" deep .063 alum. returns - pre-painted black

BACKS: .090 alum. backs - insides painted White

ILLUM.: White LEDs as required by manufacturer;
Remote Power Supplies

WIREWAY: Aluminum enclosure on backside of wall to be provided as required to cover feed holes; Painted to match wall

INSTALL: Thru bolted using all thread into blocking as required;
12" standard length of threaded rod will be supplied unless otherwise noted;
3/8" threaded rod into blocking or Stratus approved equivalent

QUANTITY: (1) ONE REQUIRED

COLOR PALETTE

- Enclosure: Color to be provided
- 3M 3632-33 Red
- Black

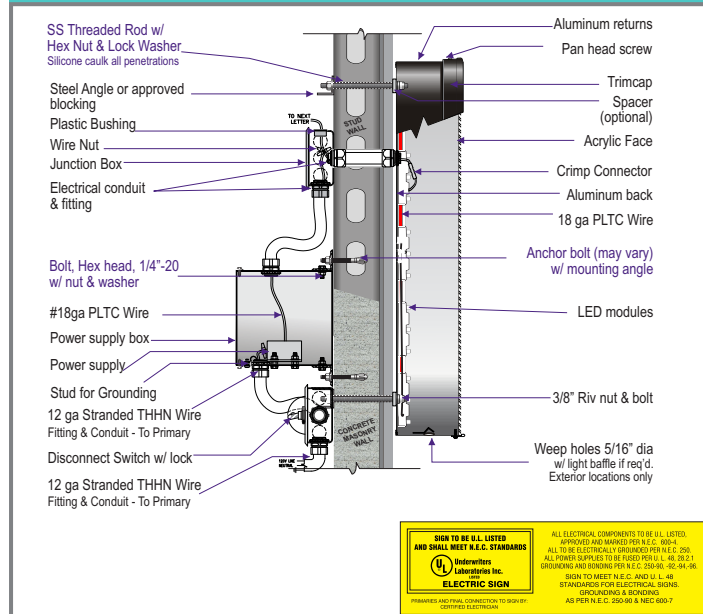


Paint finish to be satin unless otherwise specified

SIMULATED NIGHT VIEW



FACE LIT LED | REMOTE, FLUSH | GENERIC INSTALL



UL LISTED
ELECTRIC SIGN
ALL ELECTRICAL COMPONENTS TO BE UL LISTED...
UL Laboratories Inc.

Stratus
onestratus.com
8959 Tyler Boulevard
Mentor, Ohio 44060
888.503.1569

CLIENT: University Hospitals Urgent Care
ADDRESS: 20914 CENTER RIDGE RD ROCKY RIVER, OH 44116
PAGE NO.: 6

ORDER NUMBER: 1245282
SITE NUMBER: 20914
ELECTRONIC FILE NAME: G:\ACCOUNTS\PIEDMONT URGENT CARE\2025\OH20914_Rocky River\20914_Rocky River_Exterior_R12.cdr
PROJECT NUMBER: 86536
PROJECT MANAGER: LEE HUNTER

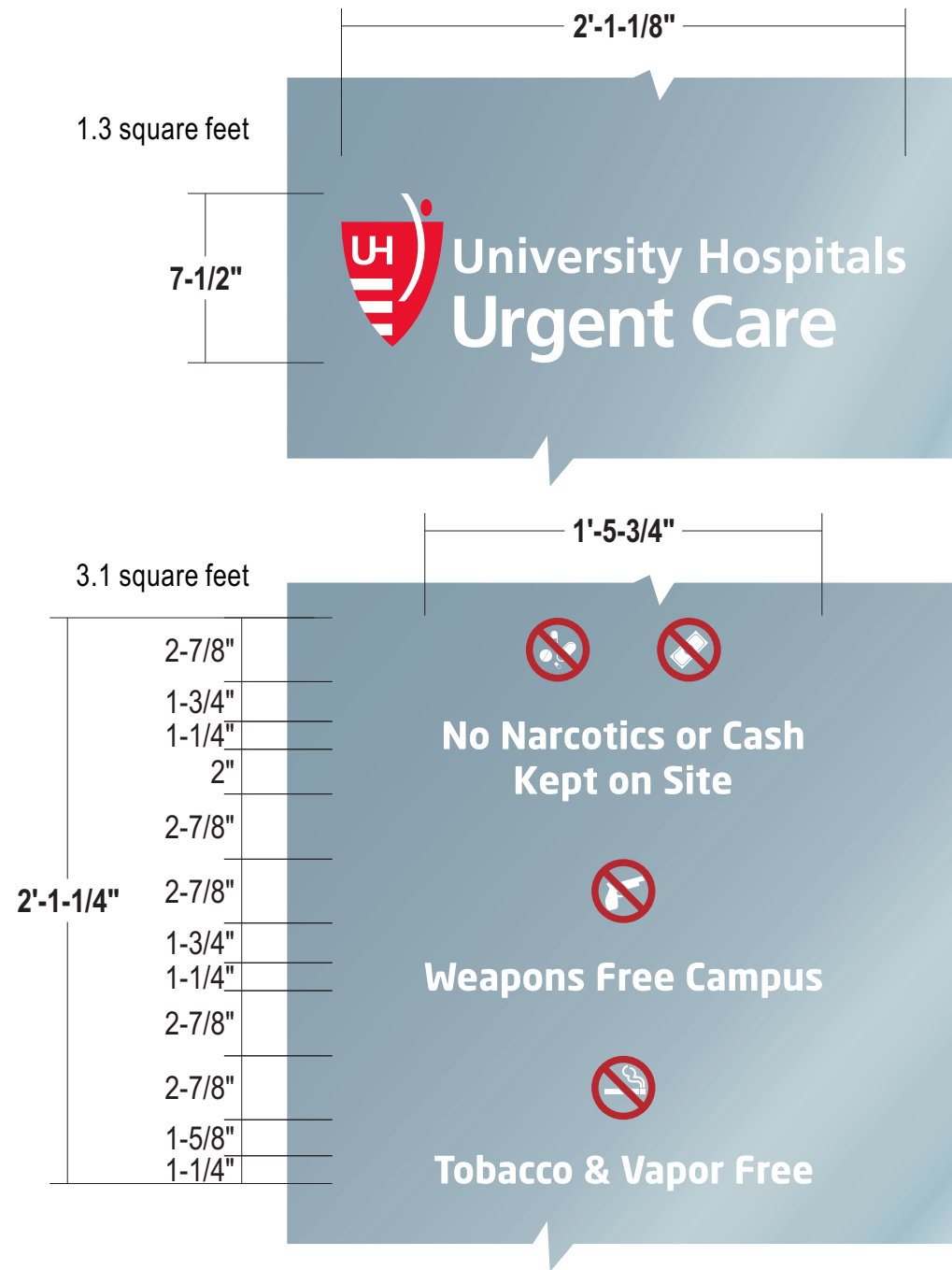
Rev #	Req #	Date/Artist	Description
Original	560776	10/28/25 KF	
Rev 1	561866	11/04/25 KF	Increased size
Rev 2	563411	11/10/25 KF	Updated note
Rev 3	564256	11/17/25 KF	
Rev 4	565257	11/20/25 JT	
Rev 5	565489	11/21/25 KW	
Rev 6	565740	11/24/25 MC	Change to color palette

Rev #	Req #	Date/Artist	Description
Rev 7	575772	01/26/26 BB	Removed E02 and Elevation; revised sign numbers
Rev 8	575962	01/27/26 BB	
Rev 9	577296	02/04/26 BB	Revised to selected option (E02 package D)
Rev 10	578005	02/06/26 BB	
Rev 11	582425	03/04/26 BB	Revised to show new size based on confirmed measurement
Rev 12	584225	03/10/26 VAF	Updated sign designation

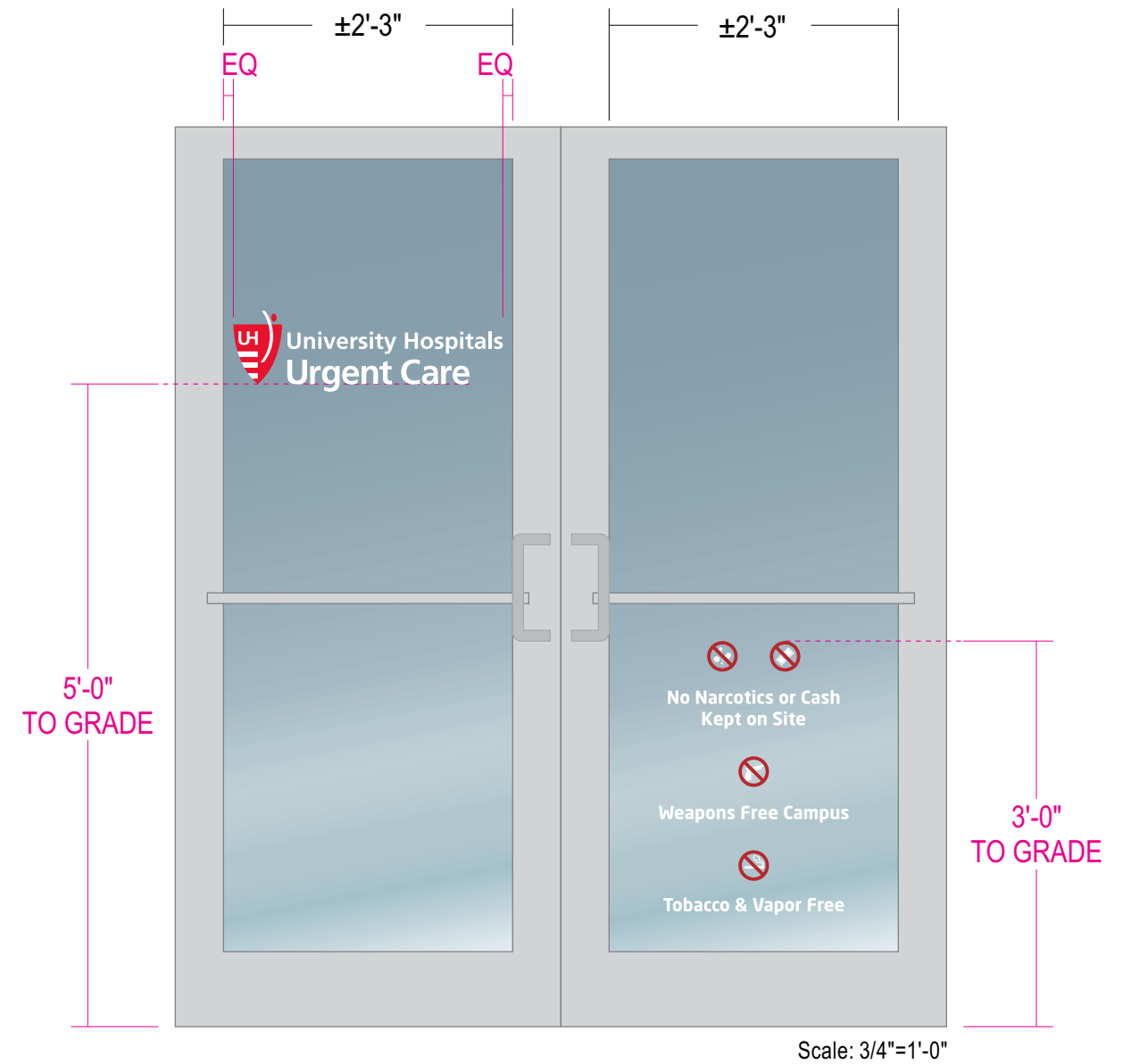
PRINTS ARE THE EXCLUSIVE PROPERTY OF STRATUS. THIS MATERIAL SHALL NOT BE USED, DUPLICATED, OR OTHERWISE REPRODUCED WITHOUT THE PRIOR WRITTEN CONSENT OF STRATUS.

E03 DOOR VINYL
Scale: 1-1/2"=1'-0"

UHUC-DV-D
3.1 square feet



COLOR PALETTE	
	3M 7725-10 White
	Pantone 185 C Red
	Pantone 1805 C Red
	3MIJ8150 Clear View



GRAPHICS: Surface applied digitally printed die-cut vinyl to match colors shown;
Pictograms to be digitally printed to optically clear vinyl

QUANTITY: (1) ONE REQUIRED

Stratus

onestratus.com
8959 Tyler Boulevard
Mentor, Ohio 44060
888.503.1569

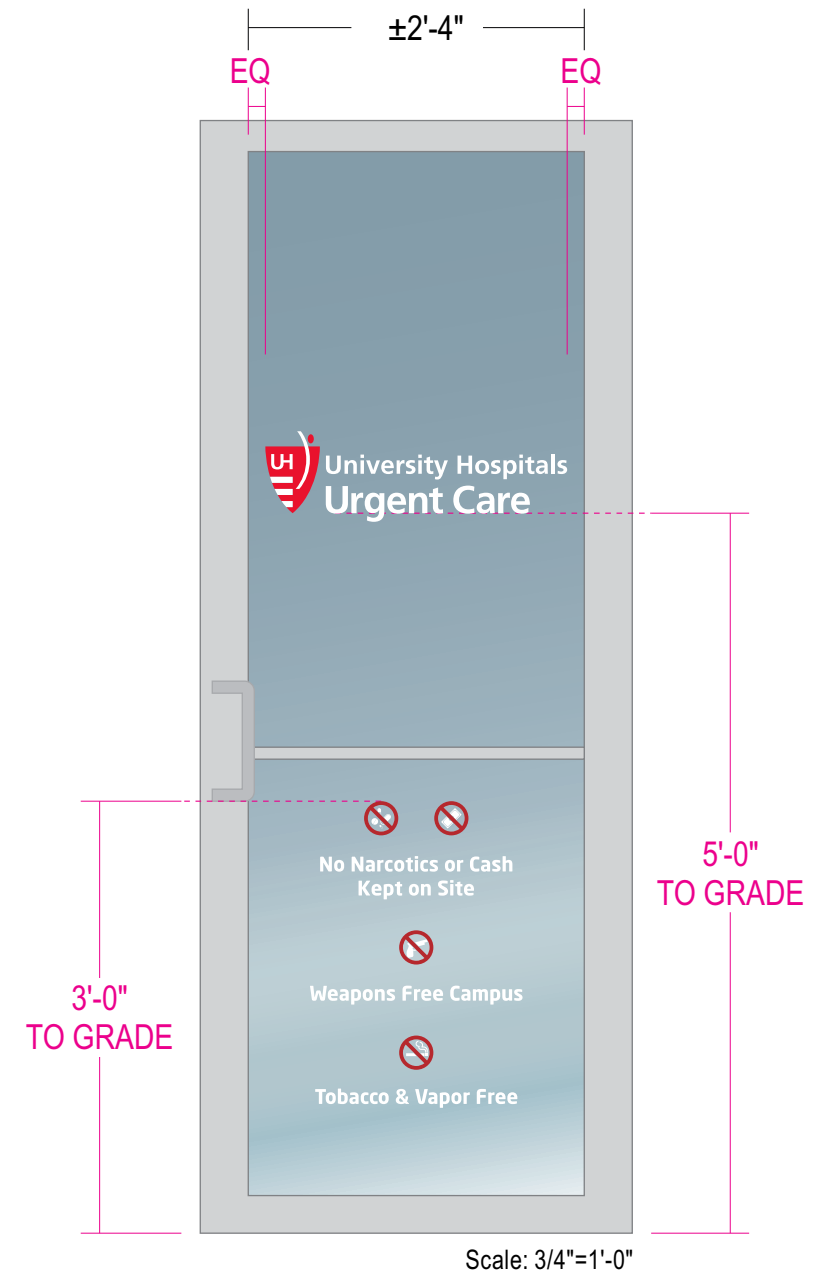
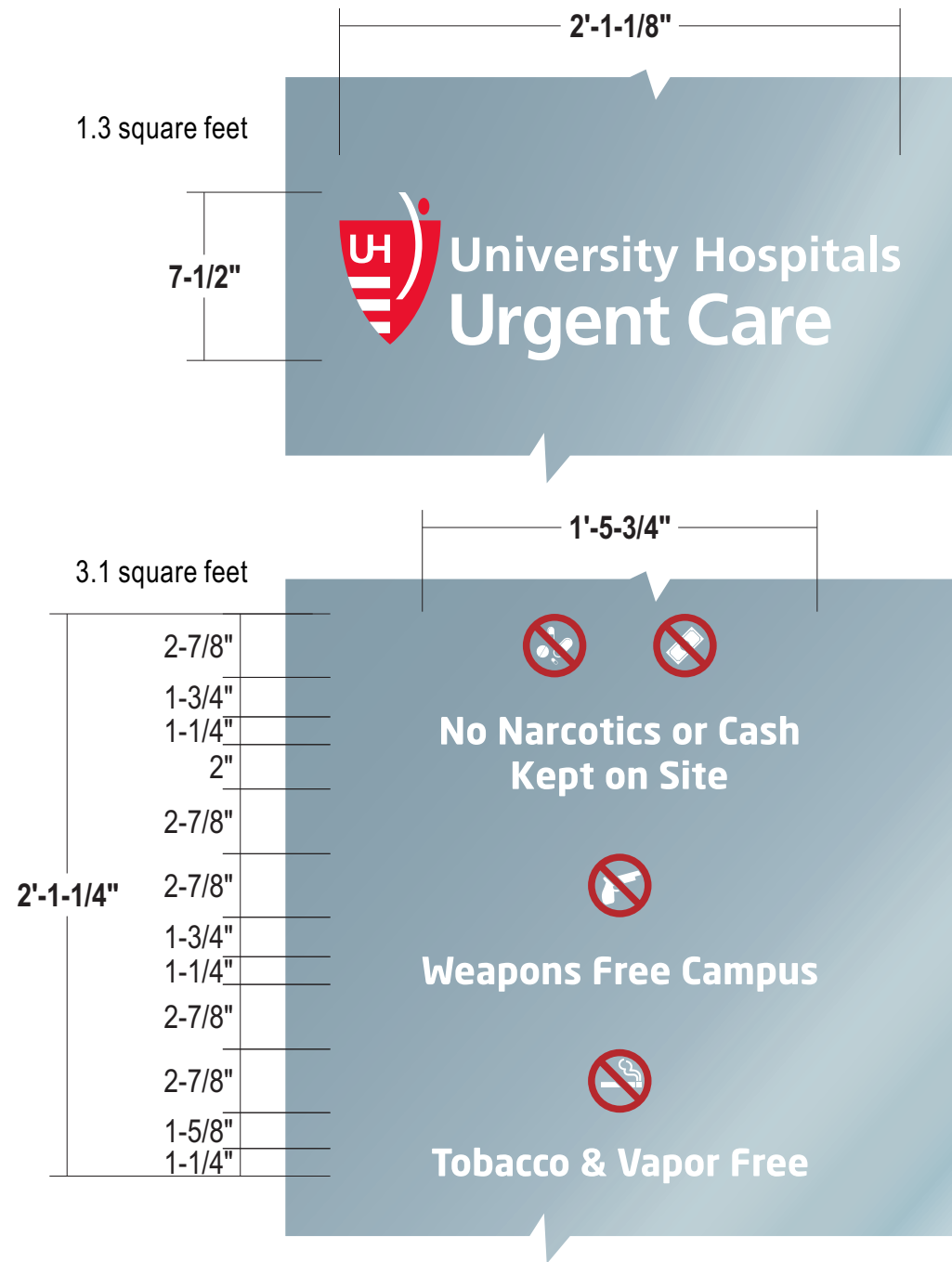
CLIENT: 	ADDRESS: 20914 CENTER RIDGE RD ROCKY RIVER, OH 44116
PAGE NO.: 7	

ORDER NUMBER: 1245282	PROJECT NUMBER: 86536
SITE NUMBER: 20914	PROJECT MANAGER: LEE HUNTER
ELECTRONIC FILE NAME: G:\ACCOUNTS\PIEDMONT URGENT CARE\2025\OH\20914_Rocky River\ 20914_Rocky River_Exterior_R12.cdr	

Rev #	Req #	Date/Artist	Description	Rev #	Req #	Date/Artist	Description
Original	560776	10/28/25 KF		Rev 7	575772	01/26/26 BB	Revised sign number
Rev 1	561866	11/04/25 KF		Rev 8	575962	01/27/26 BB	
Rev 2	563411	11/10/25 KF		Rev 9	577296	02/04/26 BB	
Rev 3	564256	11/17/25 KF		Rev 10	578005	02/06/26 BB	
Rev 4	565257	11/20/25 JT		Rev 11	582425	03/04/26 BB	
Rev 5	565489	11/21/25 KW		Rev 12	584225	03/10/26 VAF	
Rev 6	565740	11/24/25 MC					

E04 DOOR VINYL
Scale: 1-1/2"=1'-0"

UHUC-DV-S
3.1 square feet



COLOR PALETTE

- 3M 7725-10 White
- Pantone 185 C Red
- Pantone 1805 C Red
- 3MIJ8150 Clear View

GRAPHICS: Surface applied digitally printed die-cut vinyl to match colors shown; Pictograms to be digitally printed to optically clear vinyl

QUANTITY: (1) ONE REQUIRED

Stratus

onestratus.com
8959 Tyler Boulevard
Mentor, Ohio 44060
888.503.1569

CLIENT:
 University Hospitals Urgent Care

ADDRESS:
20914 CENTER RIDGE RD
ROCKY RIVER, OH 44116

PAGE NO.:
8

ORDER NUMBER:
1245282

SITE NUMBER:
20914

ELECTRONIC FILE NAME:
G:\ACCOUNTS\PIEDMONT URGENT CARE\2025\OH\20914_Rocky River\20914_Rocky River_Exterior_R12.cdr

PROJECT NUMBER:
86536

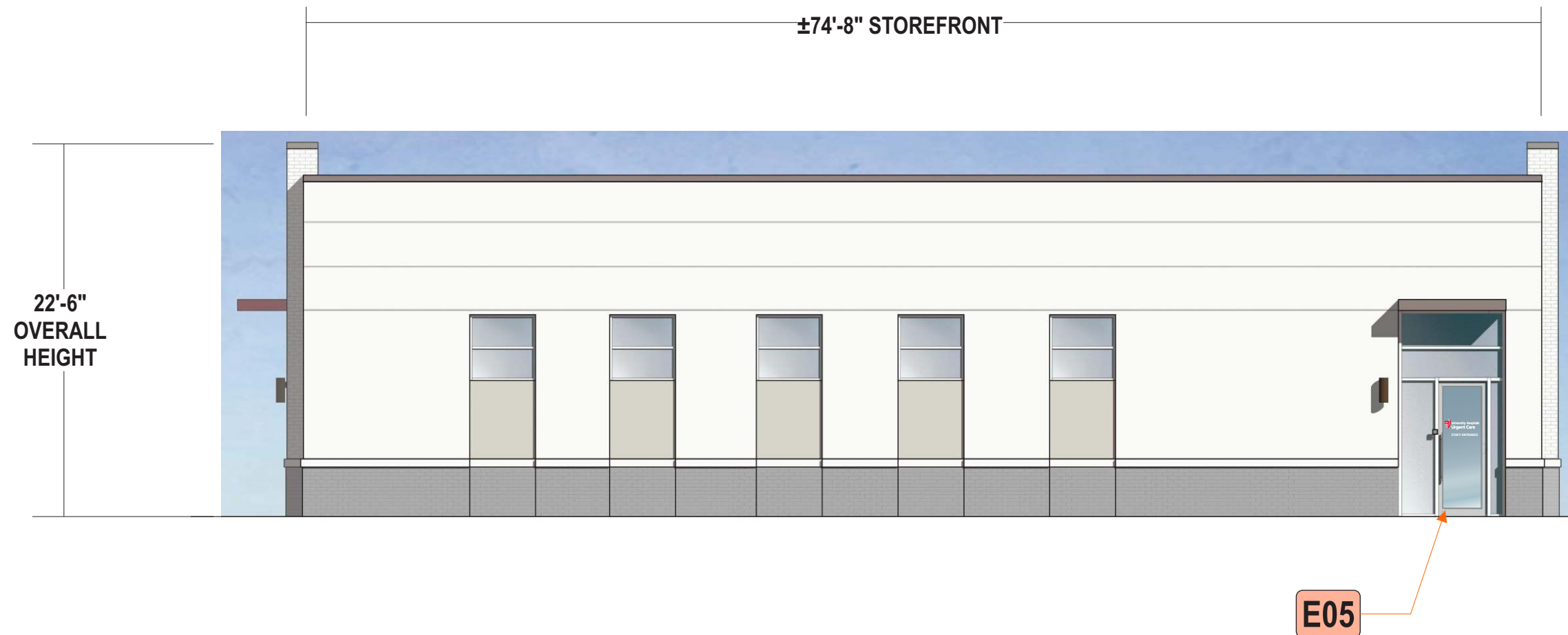
PROJECT MANAGER:
LEE HUNTER

Rev #	Req #	Date/Artist	Description	Rev #	Req #	Date/Artist	Description
Original	560776	10/28/25 KF		Rev 7	575772	01/26/26 BB	Added to book
Rev 1	561866	11/04/25 KF		Rev 8	575962	01/27/26 BB	
Rev 2	563411	11/10/25 KF		Rev 9	577296	02/04/26 BB	
Rev 3	564256	11/17/25 KF		Rev 10	578005	02/06/26 BB	
Rev 4	565257	11/20/25 JT		Rev 11	582425	03/04/26 BB	
Rev 5	565489	11/21/25 KW		Rev 12	584225	03/10/26 VAF	
Rev 6	565740	11/24/25 MC					

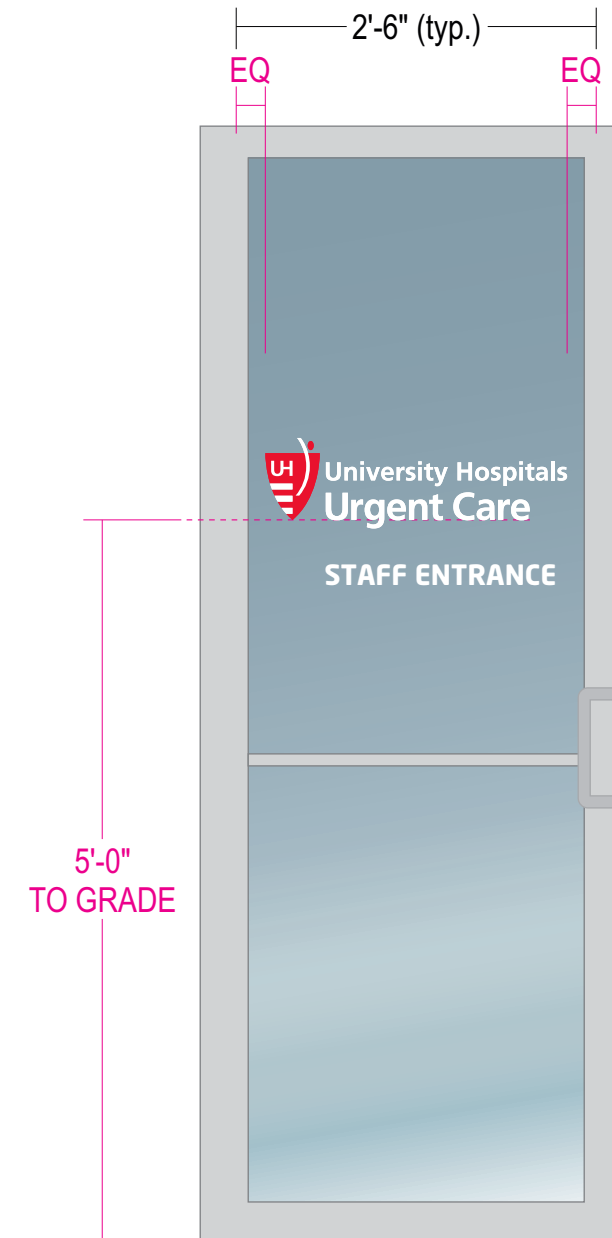
E05 RIGHT (NORTH) ELEVATION
Scale: 1/8"=1'-0"

ALL SIGN SIZES HAVE BEEN CALCULATED OFF ARCHITECTURAL PRINTS AS SHOWN

NOTE: LETTERS WILL FALL ABOVE ROOFLINE, POWER TO BE BROUGHT TO ROOF BY OTHERS STRATUS TO PROVIDE WIREWAY COVERS





Rev #	Req #	Date/Artist	Description	Rev #	Req #	Date/Artist	Description
Original	560776	10/28/25 KF		Rev 7	575772	01/26/26 BB	Revised elevation; revised sign and sign numbers
Rev 1	561866	11/04/25 KF	Increased size	Rev 8	575962	01/27/26 BB	
Rev 2	563411	11/10/25 KF		Rev 9	577296	02/04/26 BB	
Rev 3	564256	11/17/25 KF	Updated	Rev 10	578005	02/06/26 BB	
Rev 4	565257	11/20/25 JT		Rev 11	582425	03/04/26 BB	
Rev 5	565489	11/21/25 KW		Rev 12	584225	03/10/26 VAF	
Rev 6	565740	11/24/25 MC					



GRAPHICS: Surface applied opaque vinyl to match colors shown

QUANTITY: (1) ONE REQUIRED

COLOR PALETTE

-  3M 7725-10 White
-  Pantone 185 C Red

Scale: 3/4"=1'-0"

Stratus

onestratus.com
8959 Tyler Boulevard
Mentor, Ohio 44060
888.503.1569

CLIENT:

ADDRESS:
20914 CENTER RIDGE RD
ROCKY RIVER, OH 44116

PAGE NO.:
10

ORDER NUMBER:
1245282

SITE NUMBER:
20914

ELECTRONIC FILE NAME:
G:\ACCOUNTS\PIPIEDMONT URGENT CARE\2025\OH\20914_Rocky River\
20914_Rocky River_Exterior_R12.cdr

PROJECT NUMBER:
86536

PROJECT MANAGER:
LEE HUNTER

Rev #	Req #	Date/Artist	Description	Rev #	Req #	Date/Artist	Description
Original	560776	10/28/25 KF		Rev 7	575772	01/26/26 BB	Revised door to match elevation
Rev 1	561866	11/04/25 KF		Rev 8	575962	01/27/26 BB	
Rev 2	563411	11/10/25 KF		Rev 9	577296	02/04/26 BB	
Rev 3	564256	11/17/25 KF		Rev 10	578005	02/06/26 BB	
Rev 4	565257	11/20/25 JT		Rev 11	582425	03/04/26 BB	
Rev 5	565489	11/21/25 KW		Rev 12	584225	03/10/26 VAF	
Rev 6	565740	11/24/25 MC					