

design loading for braced walls

wind..... 115 mph, exposure b

wall bracing note

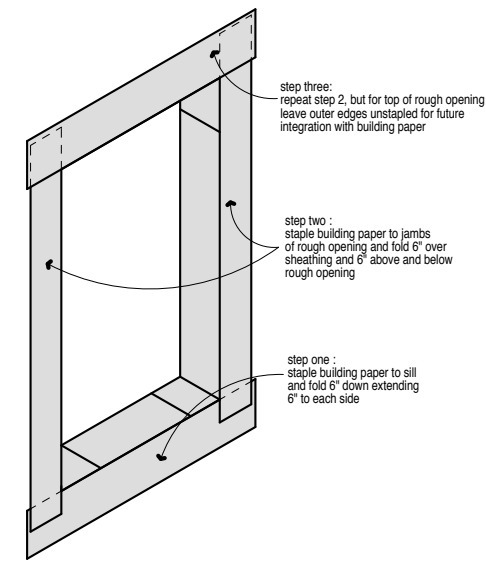
this fully sheathed structure per the 2019 IRC relies on the sheathed exterior walls built in accordance with the requirements listed on this page for lateral stability and is considered adequately braced in accordance with the building code.

*** NOTE: "SHEAR WALL" AND "BRACED WALL" TERMINOLOGIES ARE EQUAL AND INTERCHANGEABLE ON THIS DRAWING**

braced wall construction specifications

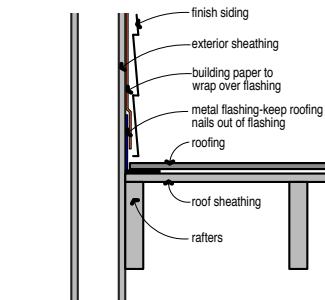
-wall [type 1] - typical exterior shear wall construction requirements:
all exterior walls shall have continuous apa sheathing 3/2" x 16" 1/2" or 15/32" exposure 1 with 5d common nails at 6" o.c. at edges and 12" o.c. at intermediate supports with interior drywall finish comprised of 1/2" minimum gypsum board with 5d x 1 5/8" nails, or #6 x 1 1/4" type w or s screws at 7" o.c. at edges and 12" o.c. at intermediate supports.

-wall [type 2] - typical interior shear wall construction requirements:
interior shear walls as indicated on plan shall have 1/2" gypsum board with 5d x 1 5/8" galvanized nails or no. 6 x 1 1/4" long type w or s screws at 4" o.c. at edges and 7" o.c. at intermediate supports or 5/8" gypsum board with 5d x 1 7/8" galvanized nails or no. 6 x 1 1/4" long type w or s screws at 7" o.c. at edges and 7" o.c. at all supports



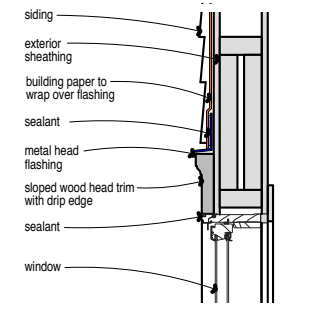
window/door opening wrap

scale 1 1/2"=1'-0"



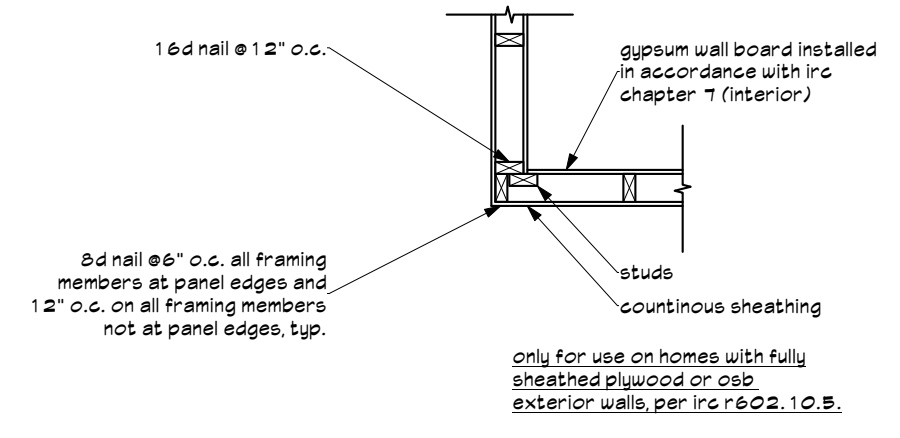
sidewall flashing

scale 1 1/2"=1'-0"



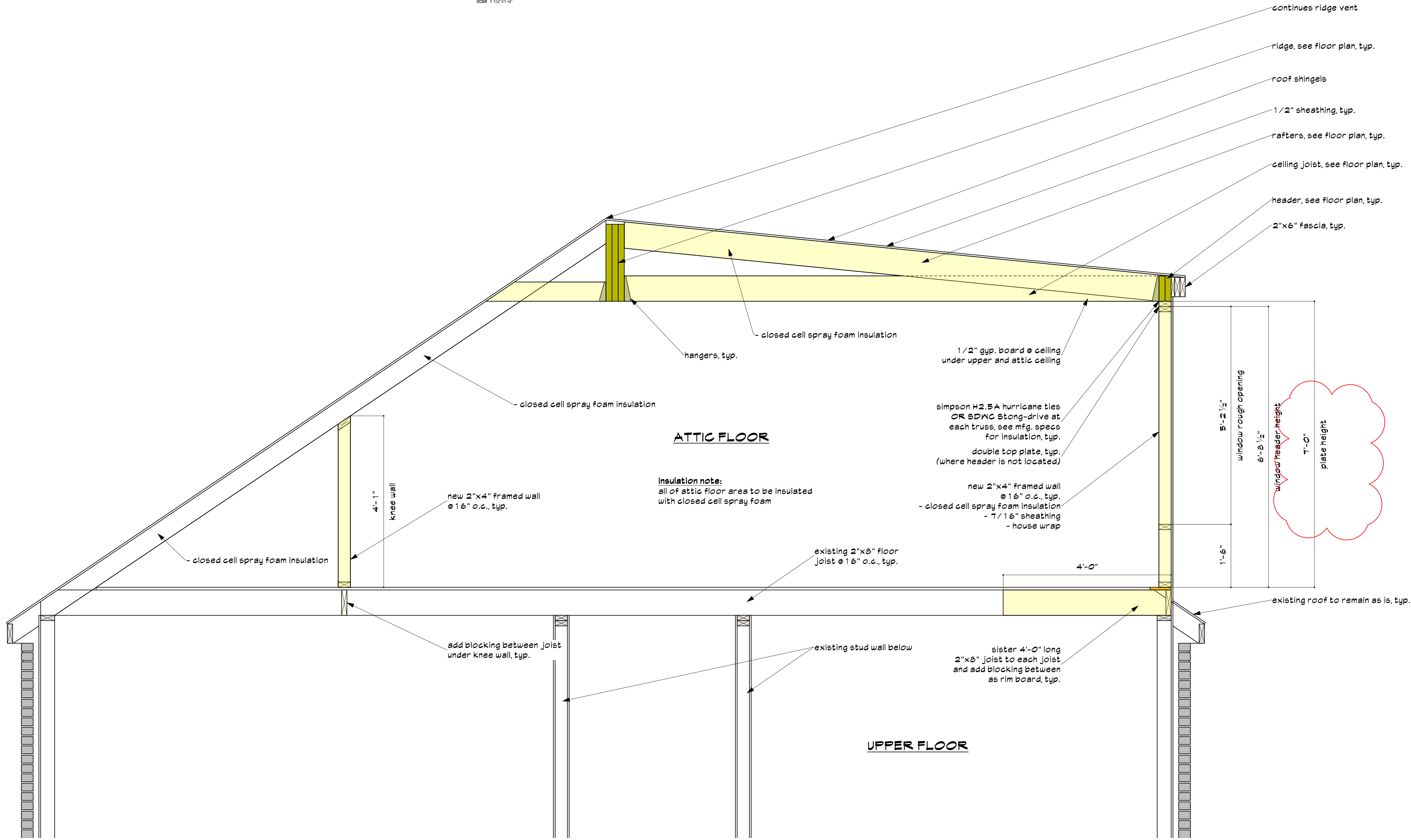
flashing system at window

scale 1 1/2"=1'-0"



outside corner detail (per IRC R602.10.5)

scale 3/4" = 1'-0"



cross section "A"

scale 3/4" = 1'-0"



Copyright 2025
©STREAMLINE DESIGNS, LLC
All rights reserved. This design and these plans are the property of Streamline Designs, LLC. No portion of this design or these plans may be reproduced, stored in a retrieval system, or transmitted in any form or by any means, electronic, mechanical, photocopying, recording, or by any information storage and retrieval system, without the written permission of Streamline Designs, LLC.
These plans can only be used for the specific project stated on the title block.

JOB NUMBER
530

DRAWN BY:
JMB

DATE	ISSUE	
10/22/25	permits	
REV	DATE	DESCRIP.
A	2/24/26	permit rev.
B	3/6/26	city rev.

SHEET TITLE

typical section details

SHEET

A-4

of 4