

WAYNE HOMES®

— EST.1973 —

ABBREVIATIONS

A/C	AIR CONDITIONING	FT	FOOT/FEET	PVMT	PAVEMENT
AB	ANCHOR BOLT	FTG	FOOTING	QT	QUARRY TILE
ABV	ABOVE	FJR	FURRED(ING)	R	RADIUS RISER OR ROD
ACT	ACTUAL	FURN	FURNACE	RA	RETURN AIR
AD	AFRON DRAWER	FX	FIXED	RD	ROOF DRAIN
ADH	ADHESIVE	GA	GAUGE	REC	RECREATION, RECESSED
ADJ	ADJUSTABLE	GAR	GARAGE	REC'D	RECEIVED
AFF	ABOVE FINISH FLOOR	GC	GENERAL CONTRACT(OR)	REF	REFRIGERATOR
AGG	AGGREGATE	GFI	GROUND FAULT INTERRUPTER	REFR	REFERENCE
ALT	ALTERNATE	GI	GALVANIZED IRON	REINF	REINFORC(ED)(ING)
ARCH	ARCHITECTURAL	GL	GLASS GLAZING	REQ'D	REQUIRED
ASPH	ASPHALT	GL BLK	GLASS BLOCK	RES	RESILIENT
AUTO	AUTOMATIC	GR	GREAT ROOM	REV	REVISION(S), REVISED
AVN	AVENUE	GRAN	GRANULAR	RFG	ROOFING
BA	BATH	GWB	GYPSUM WALLBOARD	RFG	ROUGH-IN
BD	BOARD	HB	HOSE BIBB	RJB	REINFORCED JUNCTION BOX
BF	BIFOLD	HC	HOLLOW CORE	RL	RAILING
BBIT	BITUMINOUS	HDR	HEADER	RM	ROOM
BLDG	BUILDING	HDRN	HARDWARE	RNG	RANGE
BLK	BLOCK	HM	HOLLOW METAL	RO	ROUGH OPENING
BLK/G	BLOCKING	HORIZ	HORIZONTAL	ROW	RIGHT OF WAY
BM	BEAM	HP	HEAT PUMP	SC	SOLID CORE
BOT	BOTTOM	HT	HEIGHT	SCHED	SCHEDULE
BP	BYPASS	HTR	HEATER	SD	SMOKE DETECTOR
BR	BEDROOM	HVAC	HEATING/VENTILATING/AIR COND	SECT	SECTION
BRG	BRICKING	ID	INSIDE DIAMETER	SGD	SLIDING GLASS DOOR
BRK	BRICK	INSUL	INSULATE(ED)(ION)	SH	SHELF, SHELVING OR SINGLE HUNG
BRKF	BREAKFAST	INT	INTERIOR	SHT	SHEET
BSMT	BASEMENT	INT	IN SIDE LOOKING OUT	SHTH	SHEATHING
BVL	BEVELED	JST	JOIST	SIM	SIMILAR
CAB	CABINET	JT	JOINT	SLD	SLIDER
CAD	CARBON MONOXIDE DETECTOR	KIT	KITCHEN	SPEC	SPECIFICATIONS
CEM	CEMENT	LAM	LAMINATED	SPKR	SPEAKER
CER	CERAMIC	LAUN	LAUNDRY	SQ	SQUARE
CI	CAST IRON	LAV	LAVATORY	SOFT	SQUARE FEET (FOOT)
CIR	CIRCLE	LIV	LIVING	SOIN	SQUARE INCHES
CJ	CONTROL JOINT	LI	LIVE LOAD	SST	STAINLESS STEEL
CLG	CEILING	LNTL	LINTEL	STD	STANDARD
CLK	CAULK(ING)	LT	LIGHT	STL	STEEL
CLR	CLEAR(ANCE)	LVL	LAMINATED VENEER LUMBER	STN	STONE
CMU	CONCRETE MASONRY UNIT	LVR	LOUVER	STO	STORAGE
COL	COLUMN	MAS	MASONRY	STR	STRUCTURAL
COMB	COMBINATION	MATL	MATERIAL	SUSP	SUSPENDED
CONC	CONCRETE	MAX	MAXIMUM	T & G	TONGUE AND GROOVE
CONSTR	CONSTRUCTION	MBA	MASTER BATH	T/	TOP
CONT	CONTINUOUS	MBR	MASTER BEDROOM	TB	TOWEL BAR
CONTR	CONTRACTOR	MC	MEDICINE CABINET	TEL	TELEPHONE
CPT	CARPET	MECH	MECHANICAL	THK	THICK(NESS)
CRS	COURSE(S)	MFR	MANUFACTURER	THR	THRESHOLD
CSMT	CASEMENT	MH	MANHOLE	TOC	TOP OF CONCRETE
CT	CERAMIC TILE	MIN	MINIMUM	TOF	TOPE OF FOUNDATION
CU FT	CUBIC FOOT	MIR	MIRROR	TP	TOILET PAPER HOLDER
CU YD	CUBIC YARD	MISC	MISCELLANEOUS	TRD	TRAIL
DED	DEDICATED	MLDG	MOLDING, MOULDING	TRFL	TRIPLE
DET	DETAIL	MM	MILLIMETER	TV	TELEVISION
DH	DOUBLE HUNG	MO	MASONRY OPENING	TYP	TYPICAL
DIA	DIAMETER	MTG	MOUNT(ED)(ING)	UNF	UNFINISHED
DIM	DIMENSION	MTL	METAL	UTIL	UTILITY(IES)
DL	DEAD LOAD	MULL	MULLION	UTC	UTILITY CABINET
DR	DOWN	NC	NOT IN CONTRACT	V	VANITY
DS	DOWNSPOUT	NOM	NOMINAL	VB	VAPOR BARRIER
DW	DISH WASHER	NTS	NOT TO SCALE	VERT	VERTICAL
EA	EACH	OA	OVERALL	VIN	VINYL
ELEC	ELECTRIC(AL)	OC	ON CENTER	VNR	VENEER
ELEV	ELEVATION	OH	OVERHEAD	VP	VAPOR PROOF
ENT	ENTRY	OHD	OVERHEAD DOOR	VT	VINYL TILE
EQ	EQUAL	OPT	OPTIONAL	W/	WITH
EST	ESTIMATE	O.S.L.I.	OUT SIDE LOOKING IN	W/O	WITHOUT
EXH	EXHAUST	PAR	PARALLEL	WC	WATER CLOSET
EXST	EXISTING	PC	PULL CHAIN	WD	WOOD
EXT	EXTERIOR	PCR	POWDER ROOM	WF	WIDE FLANGE
FAM	FAMILY	PED	PEDESTAL	WH	WATER HEATER
FBO	FINISHED BY OTHERS	PERI	PERIMETER	WI	WROUGHT IRON
FD	FLOOR DRAIN	PL	PLATE	WIC	WALK IN CLOSET
FDN	FOUNDATION	PLAS	PLASTER	WIN	WINDOW
FIN	FINISH	PNL	PANEL	WO	WALK-OUT
FLASH	FLASHING	PNTD	PAINTED	WP	WATER PROOF
FLR	FLOOR(ING)	PREFAB	PREFABRICATE(D)	WS	WATER SOFTNER
FLUOR	FLUORESCENT	PSF	POUNDS PER SQUARE FOOT	WSCOT	WAINSCOT
FO	FACE OF	PSI	POUNDS PER SQUARE INCH	WWF	WELDED WIRE FABRIC
FP	FIREPLACE	PSL	PARALLEL STAND LUMBER	WWM	WELDED WIRE MESH
FPHB	FROST PROOF HOSE BIB	PT	PRESSURE TREATED		
		PTN	PARTITION		
		PV	PAVE(D)(ING)		
		PVC	POLYVINYL CHLORIDE		



DESIGN CRITERIA / CODE COMPLIANCE

THESE PLANS ARE TO COMPLY WITH:

GENERAL CONDITIONS / MISC. INFORMATION

FIREPLACE ROUGH OPENINGS (AS PER DETAIL SH-7):
 HEATILATOR (DV) NDV42361 - 42" WIDE X 34-7/8" TALL
 HEATILATOR (DV) NDV48421 - 49" WIDE X 34-7/8" TALL
 HEATILATOR (RADIANT WB) EL36 - 42" WIDE X 39-3/4" TALL
 HEATILATOR (CIRC. WB) A36C - 43" WIDE X 41-1/2" TALL
 HEATILATOR (CIRC. WB) A42C - 49" WIDE X 41-1/2" TALL
 HEATILATOR (WB) C-40 CONSTITUTION - 42-1/2" WIDE X 56-3/4" TALL
 HEAT & GLO (DV) SL750-TR5-IFI-E - 42" WIDE X 38-1/4" TALL
 HEAT & GLO (RADIANT WB) RH36 - 42" WIDE X 39-3/4" TALL
 HEAT & GLO (CIRC. WB) EM-415 - 43" WIDE X 41-1/2" TALL
 HEAT & GLO (CIRC. WB) EM-485T - 49" WIDE X 41-1/2" TALL

ELECTRIC FIREPLACE ROUGH OPENINGS:
 BOTTOM OF R.O. HEIGHT ABOVE FINISHED FLOOR TO BE PER FLOOR PLAN
 SIMPLIFIRE SCION 55" ELECTRIC - 57" WIDE X 24-1/4" TALL
 SIMPLIFIRE INCEPTION 36" ELECTRIC - 42" WIDE X 34-7/8" TALL

SHEET INDEX

A-1.00	COVER SHEET/ ABBREVIATIONS
A-1.10	GENERAL NOTES
A-1.20	WINDOW SCHEDULE
A-2.20	FOUNDATION PLAN
A-2.21	FOUNDATION DETAILS
A-2.30	FOUNDATION ELECTRICAL PLAN
A-2.40	FOUNDATION MECHANICAL PLAN
A-3.20	LOWER LEVEL FLOOR PLAN
A-3.21	LOWER LEVEL DETAILS
A-3.30	LOWER LEVEL ELECTRICAL PLAN
A-3.40	LOWER LEVEL MECHANICAL PLAN
A-4.00	FIRST FLOOR FRAMING PLAN
A-4.20	FIRST FLOOR PLAN
A-4.21	FIRST FLOOR DETAILS
A-4.30	FIRST FLOOR ELECTRICAL PLAN
A-4.40	FIRST FLOOR MECHANICAL PLAN
A-5.00	SECOND FLOOR FRAMING PLAN
A-5.20	SECOND FLOOR PLAN
A-5.30	SECOND FLOOR ELECTRICAL PLAN
A-5.40	SECOND FLOOR MECHANICAL PLAN
A-6.00	ROOF FRAMING PLAN
A-7.10	FRONT/ REAR ELEVATIONS
A-7.11	LEFT/ RIGHT ELEVATIONS
A-7.21	MISC. EXTERIOR DETAILS
A-8.10	KITCHEN PLAN
A-8.20	BATH PLAN
A-8.30	LAUNDRY PLAN
A-9.10	BUILDING SECTION
A-9.11	ALTERNATE BUILDING SECTION

GRAPHIC LEGEND

	CONCRETE (SECTIONS)		VINYL SIDING (ELEVATIONS)
	SOIL (SECTIONS)		BRICK (ELEVATIONS)
	GRAVEL (SECTIONS)		STONE (ELEVATIONS)
	INSULATION (SECTIONS)		SHAKE SIDING (ELEVATIONS)

SQUARE FOOTAGE SUMMARY

LOWER FLOOR AREA	0 S.F.
OPTIONAL FINISHED BSMT AREA	0 S.F.
FIRST FLOOR AREA	1319 S.F.
SECOND FLOOR AREA	698 S.F.
TOTAL FINISHED AREA	2017 S.F.
GARAGE AREA	0 S.F.

CHANGE ORDER SUMMARY

PRELIMS COMPLETED THRU CHANGE ORDER # N/A	
PERMS COMPLETED THRU CHANGE ORDER #	3
FINALS COMPLETED THRU CHANGE ORDER #	0

Lynden

FENGBI & XUE LI
 V/L GOLDENGATE AVE
 ROCKY RIVER, OHIO 44116
 AM #4412
 CUYAHOGA CO.

COVER SHEET

Wayne Homes expressly reserves its common law copyright and other property rights in these plans. These plans are not to be reproduced, changed, or copied in any form or manner, nor are they to be assigned to a third party without first obtaining the written permission and consent of Wayne Homes. In the event of unauthorized reuse of these plans by a third party, the third party shall be liable for all damages, including reasonable attorney's fees, from finished product. Refer to contract for specific products selected. ©2008 Wayne Homes

name	date
prelim: NIA	NIA
perm: HES	09/26/25
final:	
est:	
revisions:	
date:	drawn by:
03/03/26	HES



sheet: A1.00

GENERAL NOTES

FOUNDATION NOTES

1. STOOP TIE INTO BASEMENT WALL WITH (2) PIECES OF DUROWALL AT 5th AND 8th COURSES.
2. PORCHES LAGED INTO BASEMENT WALL PER DETAIL FM-2.
3. (2) ANCHOR BOLTS WITHIN 1'-0" OF EACH CORNER AND 72" ON CENTER AT ALL OTHER WALLS. (2) ANCHOR BOLTS TO BE WITHIN 1'-0" OF SILL PLATE SEAMS. MIN (2) ANCHOR BOLTS PER PLATE. NO ANCHOR BOLTS TO BE LOCATED UNDER WINDOWS IN SPLIT LEVEL. ANCHOR BOLT SPACING ON SPLIT/BILEVEL KNEEWALLS PER PRINTS. ANCHOR BOLTS AT O.H. DOORS TO BE SET 8" FROM M.O. 1/2" ANCHOR BOLTS USED AND INSTALLED MINIMUM 7" IN MASONRY/CONCRETE
4. ADD WATER PLUG (SINGLE CELL) POURED CORE TO THE END OF ALL BULKHEADS AND LINTELS. (REFER TO LEGEND FOR SYMBOL)
5. 6 MIL VAPOR BARRIER TO BE INSTALLED BENEATH ALL CONCRETE SLABS.
6. POURED CORES CONSIST OF, (2) FILLED CELLS w/(1) #4 PER CELL, EACH, UNLESS OTHERWISE NOTED.

FRAMING NOTES

1. DOUBLE STUDS AT INTERIOR BEARING WALLS (1) STUD TO SUPPORT EACH JOIST AT HEAT RUNS.
2. USE JOIST HANGERS WHERE NO SOLID BEARING IS PROVIDED.
3. ADD DOUBLE 2x10 BLOCKING UNDER ALL JACK AND KING STUDS AT ALL BEARING WALL OPENINGS
4. HOUSE AND GARAGE SILL PLATES OFFSET 1/2" FROM OUTSIDE FOUNDATION WALL SO SHEATHING WILL BE FLUSH WITH FOUNDATION WALL, UNLESS OTHERWISE NOTED.
5. LVL NAILING PATTERN TO BE INSTALLED PER MANUFACTURER'S INSTALLATION INSTRUCTIONS. 4 PLY OR LARGER NEEDS TO BE NAILED OR SCREWED PER PATTERN.
6. ADD 2x10 HORIZONTAL BLOCKING BETWEEN STUDS IN THESE LOCATION (TOP, MIDDLE, BOTTOM) OF STAIRWAY FOR HANDRAIL BRACKETS. BLOCKING TO BE INSTALLED IN FULL WALL OR OPPOSITE/RAIL AREA.
7. INSTALL 1x6 BLOCKING ON TOP PLATE OF ALL INTERIOR WALLS PERPENDICULAR TO TRUSSES IN THE MIDDLE THIRD OF THE TRUSS SPAN PER DETAIL SM-1.
8. INTERIOR TOP PLATES OF INTERSECTING WALLS NEED TO BE TIED IN.
9. ALL TRUSSES MUST BE INSTALLED AND BRACED ACCORDING TO MANUFACTURER'S INSTALLATION INSTRUCTION THAT ARE LEFT WITH TRUSS LOAD.
10. TRUSSES AND TRUSS WEBS ARE NEVER TO BE CUT OR ALTERED WITHOUT APPROVED ENGINEERING FROM BUILDER.
11. NO WOODEN SHIMS ARE TO BE USED UNDER ANY BEAMS (ONLY METAL SHIMS).
12. 1x4 #3 PINE STARTER STRIP IS TO BE USED AT THE BACK OF THE FLOORING LAYOUT PER DETAIL SF-3.

INSULATION NOTES

1. INSTALL R-7 INSULATION BETWEEN 2x2 FURRING STRIPS ON FOUNDATION WALLS, WHEN APPLICABLE. USE R-13 BATT SPLIT IN HALF.

EXTERIOR ENVELOPE QUALITY

1. INSTALL PAN FLASHING UNDER ALL EXTERIOR DOORS EXCEPT FOR GARAGE/HOUSE AND GARAGE SERVICE DOOR PER DETAIL.
2. INSTALL 24" PVC BLACK PORCH FLASHING PER DETAIL.
3. ALL EXTERIOR WALLS COVERED w/HOUSEWRAP IN A SHINGLE AFFECT.
4. ALL WINDOWS TO BE INSTALLED, CAULKED AND TAPED PER DETAILS.
5. INSTALL PATIO DOOR PAN FLASHING PER DETAIL.
6. INSULATE AND HOUSE WRAP ALL CANTILEVERS PER DETAIL.
7. CORNER STEP FLASHING IS TO BE INSTALLED ON ALL WALLS PROTRUDING THROUGH ROOF.
8. BRICK FLASHING AND WEEP HOLES INSTALLED PER DETAIL.
9. VINYL J-BLOCKS ARE TO BE USED AT ALL EXTERIOR LIGHT FIXTURES, METER BASES, HOSE BIBS, DISCONNECTS AND A/C OR H/P ELECTRICAL HOOK-UPS.
10. ALL PENETRATIONS WITHOUT J-BLOCK ARE TO HAVE DUCT SEAL INSTALLED.
11. FINAL ROUGH GRADE TO BE SLOPED TO TAKE WATER AWAY FROM FOUNDATION IN ALL DIRECTIONS. SLOPE OF GRADE MUST BE AT MINIMUM OF 6" EVERY 10'.

FINISHES

1. TOWEL BAR HEIGHT TO BE 46" FROM FLOOR.
2. PAPER HOLDER HEIGHT TO BE 24" FROM FLOOR.
3. TOWEL RING TO BE MOUNTED AT 60" ABOVE FINISHED FLOOR.

JOB SPECIFIC

- 1.

PRELIM VERIFY NOTES

- 1.

WAYNE HOMES
— EST. 1973 —

Lynden
FENGBI & XUE LI
V/L GOLDENGATE AVE
ROCKY RIVER, OHIO 44116
AM #4412
CUYAHOGA CO.

GENERAL NOTES

Wayne Homes expressly reserves its common law copyright and other property rights in these plans. These plans are not to be reproduced, changed, or copied in any form or manner, nor are they to be assigned to a third party without first obtaining the written permission and consent of Wayne Homes. In the event of unauthorized reuse of these plans by a third party, the third party shall be liable for all damages, including reasonable attorney's fees, from finished product. Refer to contract for specific products selected. ©2008 Wayne Homes

	name	date
prelim:	N/A	N/A
perm:	HES	09/26/25
final:		
est:		
revisions:		
date:	03/03/28	drawn by:
		HES

sheet: **A1.10**

WINDOW SCHEDULE											
WINDOW	WIDTH R.O.	HEIGHT R.O.	WINDOW	WIDTH R.O.	HEIGHT R.O.	WINDOW	WIDTH R.O.	HEIGHT R.O.	DOOR	WIDTH R.O.	HEIGHT R.O.
250 SERIES SH1660-2	3'-0"	6'-0"	250 SERIES AH6012 over SH3056-2	6'-0"	7'-10"	250 SERIES DH1850/DH3050/DH1850	6'-4"	5'-0"	DOOR w/1 SL	53 3/8"	82 1/4"
250 SERIES SH1660-4	6'-0"	6'-0"	250 SERIES FC26	2'-6"	2'-6"	250 SERIES DH1850/DH3450/DH1850	6'-8"	5'-0"	DOOR w/2 SL	68 7/8"	82 1/4"
250 SERIES SH1850	1'-8"	5'-0"	250 SERIES HC5975	5'-9 3/4"	2'-10 3/8"	250 SERIES DH2050/DH3050/DH2050	7'-0"	5'-0"	DOOR w/2 SL w/ 15-1/2" TRANSOM	68 7/8"	98 1/4"
250 SERIES SH1850/SH3050/SH1850	6'-4"	5'-0"	250 SERIES HC60	6'-0"	3'-0"	250 SERIES DH2050/DH3450/DH2050	7'-4"	5'-0"	250 SERIES TR6012 over PD 6068	6'-0"	7'-10"
250 SERIES SH1860-4	6'-8"	6'-0"	250 SERIES HC60 over SH3050-2	6'-0"	8'-0"	250 SERIES PW2050/DH4050/PW2050	8'-0"	5'-0"	250 SERIES 5068 SLIDER	5'-0"	6'-8"
250 SERIES SH1860/SH3060/SH1860	6'-4"	6'-0"	250 SERIES HC60 over SH3060-2	6'-0"	9'-0"	250 SERIES DH2450/DH3450/DH2450	8'-0"	5'-0"	250 SERIES 6068 SLIDER	6'-0"	6'-8"
250 SERIES SH2030	2'-0"	3'-0"	250 SERIES HC60 over PW6040	6'-0"	7'-0"	250 SERIES DH3050	3'-0"	5'-0"	6068 ATRIUM DOOR	6'-3 1/2"	6'-10 1/4"
250 SERIES SH2030/PW4030/SH2030	8'-0"	3'-0"	250 SERIES HC60 over PW6050	6'-0"	8'-0"	250 SERIES DH3050-2	6'-0"	5'-0"	6068 ATRIUM DOOR w/12" TRANSOM	6'-3 1/2"	7'-10"
250 SERIES SH2050	2'-0"	5'-0"	250 SERIES QC30 over SH3060	3'-0"	9'-0"	250 SERIES DH3450	3'-4"	5'-0"	6068 FRENCH DOOR	6'-2 1/2"	6'-10 1/4"
250 SERIES SH2050-3	6'-0"	5'-0"	250 SERIES TR1816/TR3016/TR1816 over SH1856/SH3056/SH1856	6'-4"	7'-0"	250 SERIES DH3450-2	6'-8"	5'-0"			
250 SERIES SH2050/SH3050/SH2050	7'-0"	5'-0"	250 SERIES TR2016/TR3016/TR2016 over SH2056/SH3056/SH2056	7'-0"	7'-0"	250 SERIES DH3450-3	10'-0"	5'-0"			
250 SERIES SH2050/HC30 over SH3050/SH2050	7'-0"	8'-0"	250 SERIES TR2820-2 over SH2856-2	5'-4"	7'-6"						
250 SERIES SH2050/PW4050/SH2050	8'-0"	5'-0"	250 SERIES TR3012 over SH3050	3'-0"	6'-2"	250 SERIES SPRINGLINE 3060	3'-0"	6'-0"			
250 SERIES SH2060/SH2660/SH2060	6'-6"	6'-0"	250 SERIES TR3012 over SH3060	3'-0"	7'-2"	250 SERIES SPRINGLINE 4760	4'-7"	6'-0"			
250 SERIES SH2060/SH3060/SH2060	7'-0"	6'-0"	250 SERIES TR3012-2 over SH3050-2	6'-0"	6'-2"	250 SERIES SPRINGLINE 5356	5'-3"	5'-6"			
250 SERIES SH2438	2'-4"	3'-8"	250 SERIES TR3016-2 over SH3050-2	6'-0"	6'-6"	250 SERIES SPRINGLINE 6044	6'-0"	4'-4"			
250 SERIES SH2440	2'-4"	4'-0"	250 SERIES TR3016-2 over SH3056-2	6'-0"	7'-0"	250 SERIES SPRINGLINE 6050	6'-0"	5'-0"			
250 SERIES SH2450/SH3050/SH2450	7'-8"	5'-0"	250 SERIES TR6016 over PW4050/PW2050	6'-0"	6'-6"						
250 SERIES SH2450/HC30 over SH3050/SH2450	7'-8"	8'-0"									
250 SERIES SH2460-3	7'-0"	6'-0"	250 SERIES PW1660	1'-6"	6'-0"						
250 SERIES SH2640	2'-6"	4'-0"	250 SERIES PW2020	2'-0"	2'-0"						
250 SERIES SH2650	2'-6"	5'-0"	250 SERIES PW2020-3	6'-0"	2'-0"				JOB SPECIFIC	WIDTH R.O.	HEIGHT R.O.
250 SERIES SH2650-2	5'-0"	5'-0"	250 SERIES PW2030-3	6'-0"	3'-0"						
250 SERIES SH2660	2'-6"	6'-0"	250 SERIES PW2050	2'-0"	5'-0"						
250 SERIES SH2660-2	5'-0"	6'-0"	250 SERIES PW2430-2	4'-8"	3'-0"						
250 SERIES SH2660/SH3060/SH2660	8'-0"	6'-0"	250 SERIES PW2438	2'-4"	3'-8"						
250 SERIES SH2840	2'-8"	4'-0"	250 SERIES PW2630	2'-6"	3'-0"						
250 SERIES SH2850	2'-8"	5'-0"	250 SERIES PW2630-2	5'-0"	3'-0"						
250 SERIES SH2860	2'-8"	6'-0"	250 SERIES PW2630-3	7'-6"	3'-0"						
250 SERIES SH2860-3	8'-0"	6'-0"	250 SERIES PW2640-2	5'-0"	4'-0"						
250 SERIES SH3030	3'-0"	3'-0"	250 SERIES PW2828	2'-8"	2'-8"						
250 SERIES SH3030-2	6'-0"	3'-0"	250 SERIES PW2828-2	5'-4"	2'-8"						
250 SERIES SH3040	3'-0"	4'-0"	250 SERIES PW2828-3	8'-0"	2'-8"						
250 SERIES SH3040-2	6'-0"	4'-0"	250 SERIES PW3030	3'-0"	3'-0"						
250 SERIES SH3046	3'-0"	4'-8"	250 SERIES PW3030-2	6'-0"	3'-0"						
250 SERIES SH3046-2	6'-0"	5'-6"	250 SERIES PW3040	3'-0"	4'-0"						
250 SERIES SH3050	3'-0"	5'-0"	250 SERIES PW3040-2	6'-0"	4'-0"						
250 SERIES SH3050-2	6'-0"	5'-0"	250 SERIES PW3840	3'-8"	4'-0"						
250 SERIES SH3050-3	9'-0"	5'-0"	250 SERIES PW3846	3'-8"	4'-6"						
250 SERIES SH3056	3'-0"	5'-8"	250 SERIES PW3850	3'-8"	5'-0"						
250 SERIES SH3056-2	6'-0"	5'-8"	250 SERIES PW4020	4'-0"	2'-0"						
250 SERIES SH3056-3	9'-0"	5'-6"	250 SERIES PW4024	4'-0"	2'-4"						
250 SERIES SH3060	3'-0"	6'-0"	250 SERIES PW4036	4'-0"	3'-8"						
250 SERIES SH3060-2	6'-0"	6'-0"	250 SERIES PW4040	4'-0"	4'-0"						
250 SERIES SH3060-3	9'-0"	6'-0"	250 SERIES PW4050	4'-0"	5'-0"						
250 SERIES SH3240	3'-2"	4'-0"	250 SERIES PW4650	4'-6"	5'-0"						
250 SERIES SH3430	3'-4"	3'-0"	250 SERIES PW5040	5'-0"	4'-0"						
250 SERIES SH3450	3'-4"	5'-0"	250 SERIES PW5820	5'-8"	2'-0"						
250 SERIES SH3450-2	6'-8"	5'-0"	250 SERIES PW6040	6'-0"	4'-0"						
250 SERIES SH3450-3	10'-0"	5'-0"	250 SERIES PW6046	6'-0"	4'-6"						
250 SERIES SH3456	3'-4"	5'-6"	250 SERIES PW6050	6'-0"	5'-0"						
250 SERIES SH3456-2	6'-8"	5'-6"									
250 SERIES SH3456-3	10'-0"	5'-6"									
250 SERIES SH3460	3'-4"	6'-0"									
250 SERIES SH3460-2	6'-8"	6'-0"									

SH=SINGLE HUNG DH=DOUBLE HUNG

PW=PICTURE WINDOW T, OR (T), OR TEMP=TEMPERED

HC=HALF CIRCLE TR=TRANSOM

PD=PATIO DOOR

WAYNE HOMES
— EST. 1973 —

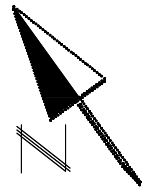
Lynden
FENGEL & XUE LI
V/L GOLDENGATE AVE
ROCKY RIVER, OHIO 44116
AM #4412
CUYAHOGA CO.

WINDOW SCHEDULE

Wayne Homes expressly reserves its common law copyright and other property rights in these plans. These plans are not to be reproduced, changed, or copied in any form or manner, nor are they to be assigned to a third party without first obtaining the written permission and consent of Wayne Homes. In the event of unauthorized reuse of these plans by a third party, the third party shall be liable for all damages, including reasonable attorneys' fees, from finished product. Refer to contract for specific products selected. ©2008 Wayne Homes

name	date
prelim:	N/A N/A
perm:	HES 09/26/25
final:	
est:	
revisions:	
date:	drawn by:
03/03/28	HES

sheet: **A1.20**



CONSTRUCTION NOTES:

GENERAL CONSTRUCTION:

1. THESE PLANS WILL COMPLY WITH 2023 NEC.
2. UP TO (2) CONTINUOUS RUN FANS.
3. CRAFTSMAN III STYLE INTERIOR DOORS
4. CRAFTSMAN TRIM PACKAGE #2
5. KNOCKDOWN STOMPED CLG TEXTURE

MASONRY/CONCRETE:

1. FILTER MEMBRANE OVER DRAIN TILE.
2. VAPOR BARRIER REQUIRED IN ALL SLAB AREAS.
3. 4 CRS FROST FTR REQUIRED

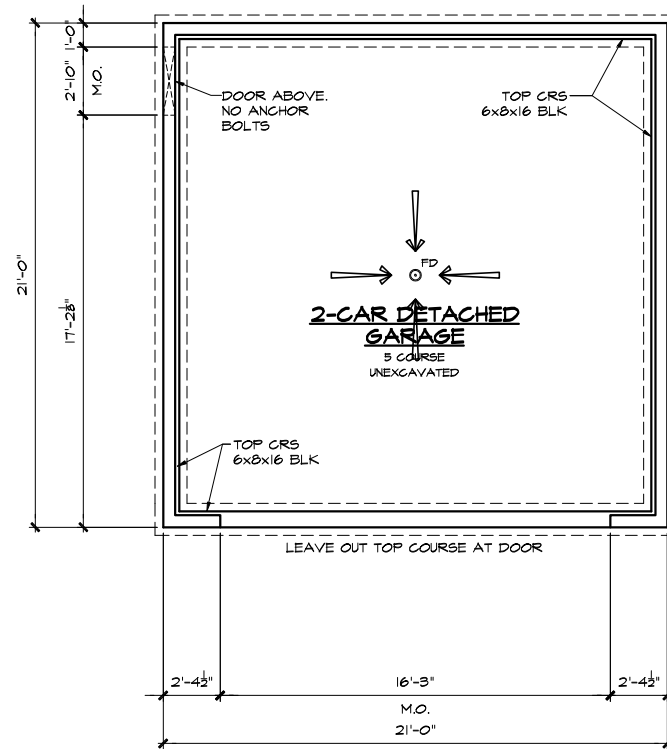
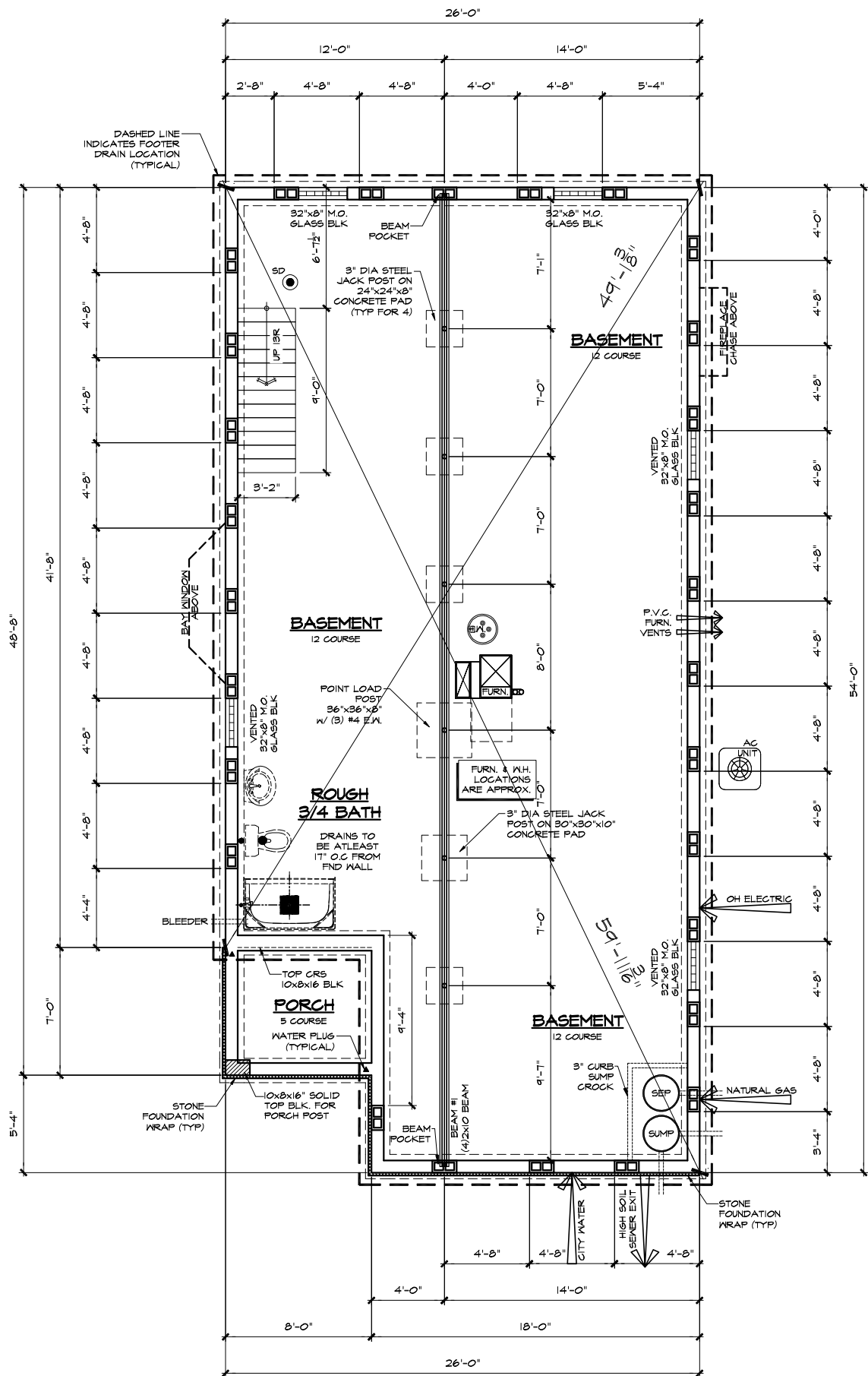
FRAMING:

1. ICE AND WATER SHIELD TO BE INSTALLED AT ALL EAVES AND VALLEYS.
2. 3"x3" LANDING REQUIRED ON ALL EXT DOORWAYS WHERE FINISHED GRADE IS GREATER THAN 2 RISERS
3. FIRESTOPPING REQUIRED.
4. EXT WALL BEHIND TUBS/SHWRS MUST BE INSULATED & COVERED W/ HOUSEWRAP PRIOR TO ROUGH FRAME INSPECTION.

ANCHOR BOLTS WITHIN 1'-0" OF EACH CORNER AND 12" ON CENTER AT ALL OTHER WALLS. (2) ANCHOR BOLTS TO BE WITHIN 1'-0" OF SILL PLATE SEAMS. NO ANCHOR BOLTS TO BE LOCATED UNDER WINDOWS IN SPLIT LEVEL. ANCHOR BOLT SPACING ON SPLIT/BILEVEL KNEEWALLS PER PRINTS. ANCHOR BOLTS AT O.H. DOORS TO BE SET 8" FROM M.O.

REBAR FOOTLOCK LOOPS TO BE 2'-0" FROM INSIDE CORNERS AND 8'-0" O.C. ON ALL WALLS. (SEE DETAIL FM-04)

CONCRETE SLAB OVER VISQUEEN VAPOR BARRIER W/ OSB DECKING AT STOOD/PORCH, BACKFILL FOR FROST PROTECTION



FOUNDATION PLAN

SCALE: 1/8" = 1'-0" WATERFRONT ELEVATION

FOUNDATION PLAN

Wayne Homes expressly reserves its common law copyright and other property rights in these plans. These plans are not to be reproduced, changed, or copied in any form or manner, nor are they to be assigned to a third party without first obtaining the written permission and consent of Wayne Homes. In the event of unauthorized reuse of these plans by a third party, the third party shall be liable to Wayne Homes for all damages. Refer to contract for specific products selected. ©2008 Wayne Homes

name	date
prelim: N/A	N/A
perm: HES	09/26/25
final:	
est:	
revisions:	
date: 03/03/26	drawn by: HES



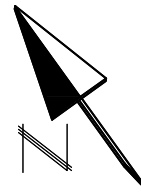
sheet: **A2.20**

Lynden

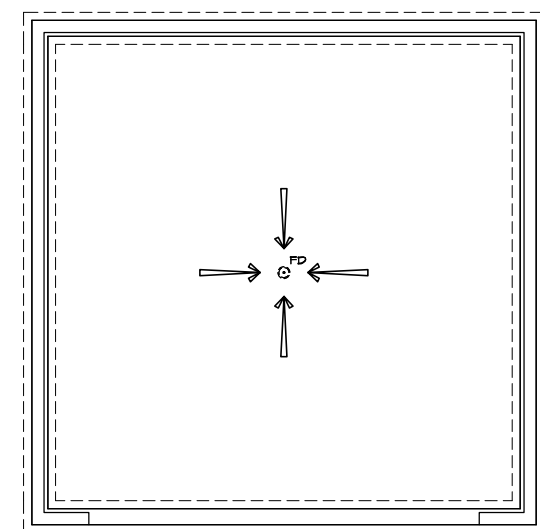
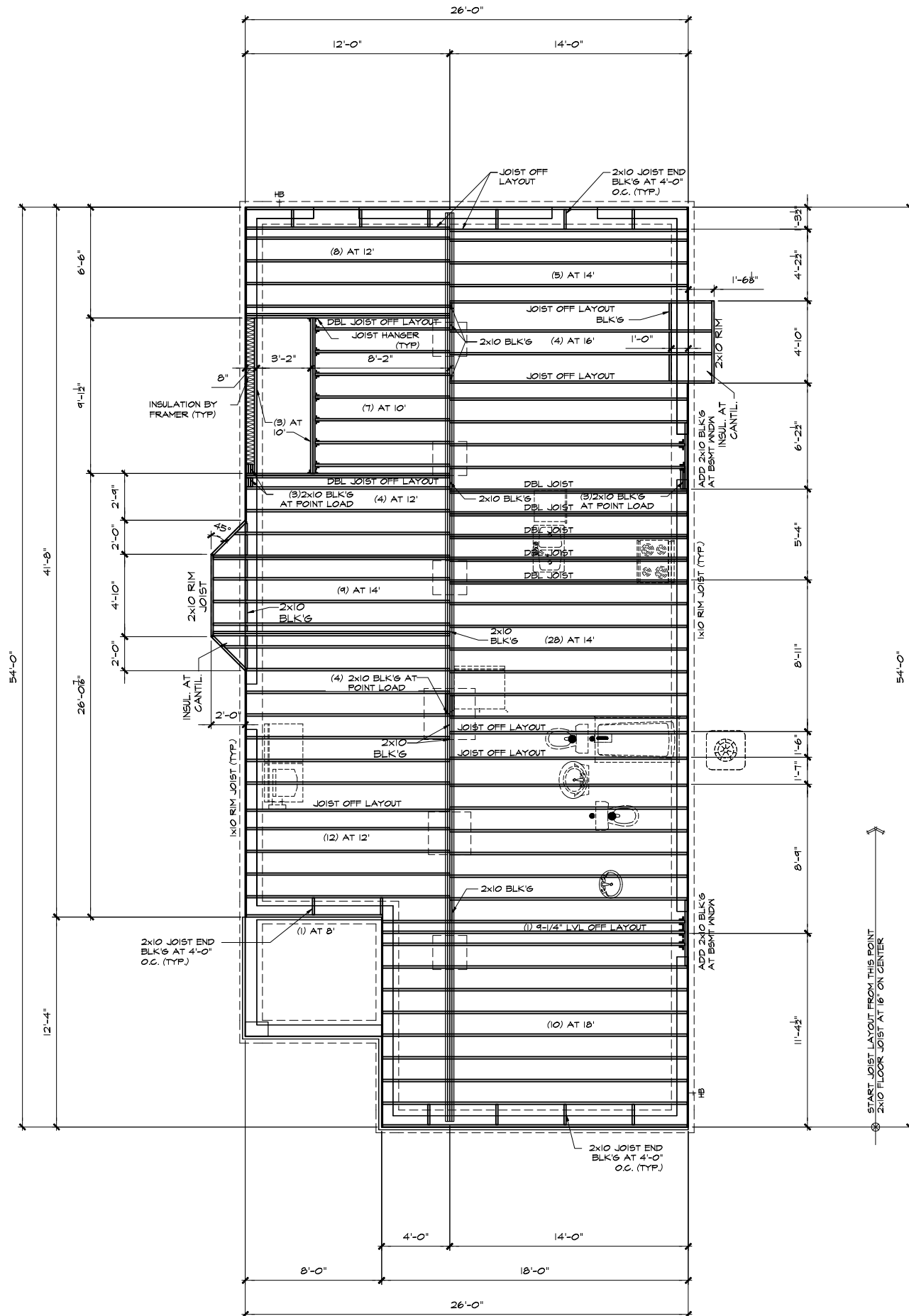
FENGBI & XUE LI
V/L GOLDENGATE AVE
ROCKY RIVER, OHIO 44116

WAYNE HOMES
EST. 1973

AM #4412
CUYAHOGA CO.



- CONSTRUCTION NOTES:**
- GENERAL CONSTRUCTION:**
1. THESE PLANS WILL COMPLY WITH 2023 NEC.
 2. UP TO (2) CONTINUOUS RUN FANS.
 3. CRAFTSMAN III STYLE INTERIOR DOORS
 4. CRAFTSMAN TRIM PACKAGE #2
 5. KNOCKDOWN STOMPED CLG TEXTURE
- MASONRY/CONCRETE:**
1. FILTER MEMBRANE OVER DRAIN TILE.
 2. VAPOR BARRIER REQUIRED IN ALL SLAB AREAS.
 3. 4 CRS FROST FTR REQUIRED
- FRAMING:**
1. ICE AND WATER SHIELD TO BE INSTALLED AT ALL EAVES AND VALLEYS.
 2. 3x3' LANDING REQUIRED ON ALL EXT DOORWAYS WHERE FINISHED GRADE IS GREATER THAN 2 RISERS
 3. FIRESTOPPING REQUIRED.
 4. EXT WALL BEHIND TUBS/SHWRS MUST BE INSULATED & COVERED W/ HOUSEWRAP PRIOR TO ROUGH FRAME INSPECTION.



FLOOR FRAMING PLAN

SCALE: 1/8" = 1'-0" WATERFRONT ELEVATION

WAYNE HOMES
— EST. 1973 —

Lynden

FENGBI & XUE LI
V/L GOLDENGATE AVE
ROCKY RIVER, OHIO 44116
AM #4412
CUYAHOGA CO.

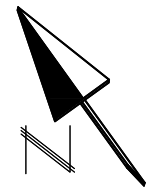
**FIRST FLOOR
FRAMING PLAN**

Wayne Homes expressly reserves its common law copyright and other property rights in these plans. These plans are not to be reproduced, changed, or copied in any form or manner, nor are they to be assigned to a third party without first obtaining the written permission and consent of Wayne Homes. In the event of unauthorized reuse of these plans by a third party, the third party shall be liable for all damages, including reasonable attorneys' fees, from finished product. Refer to contract for specific products selected. ©2008 Wayne Homes

	name	date
prelim:	N/A	N/A
perm:	HES	09/26/25
final:		
est:		
revisions:		
date:	03/03/26	drawn by: HES



sheet: **A4.00**



CONSTRUCTION NOTES:

GENERAL CONSTRUCTION:

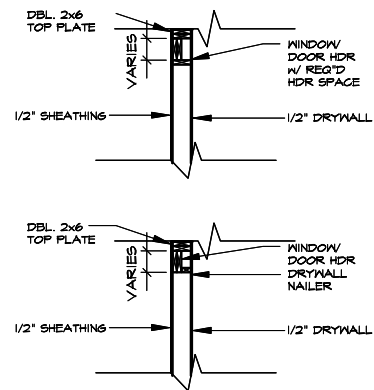
1. THESE PLANS WILL COMPLY WITH 2023 NEC.
2. UP TO (2) CONTINUOUS RUN FANS.
3. CRAFTSMAN III STYLE INTERIOR DOORS
4. CRAFTSMAN TRIM PACKAGE #2
5. KNOCKDOWN STOMPED CLG TEXTURE

MASONRY/CONCRETE:

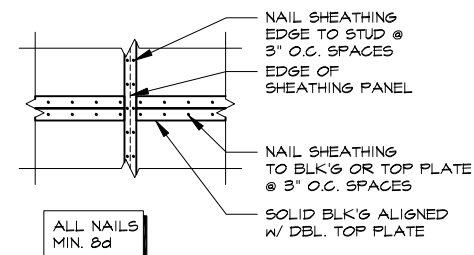
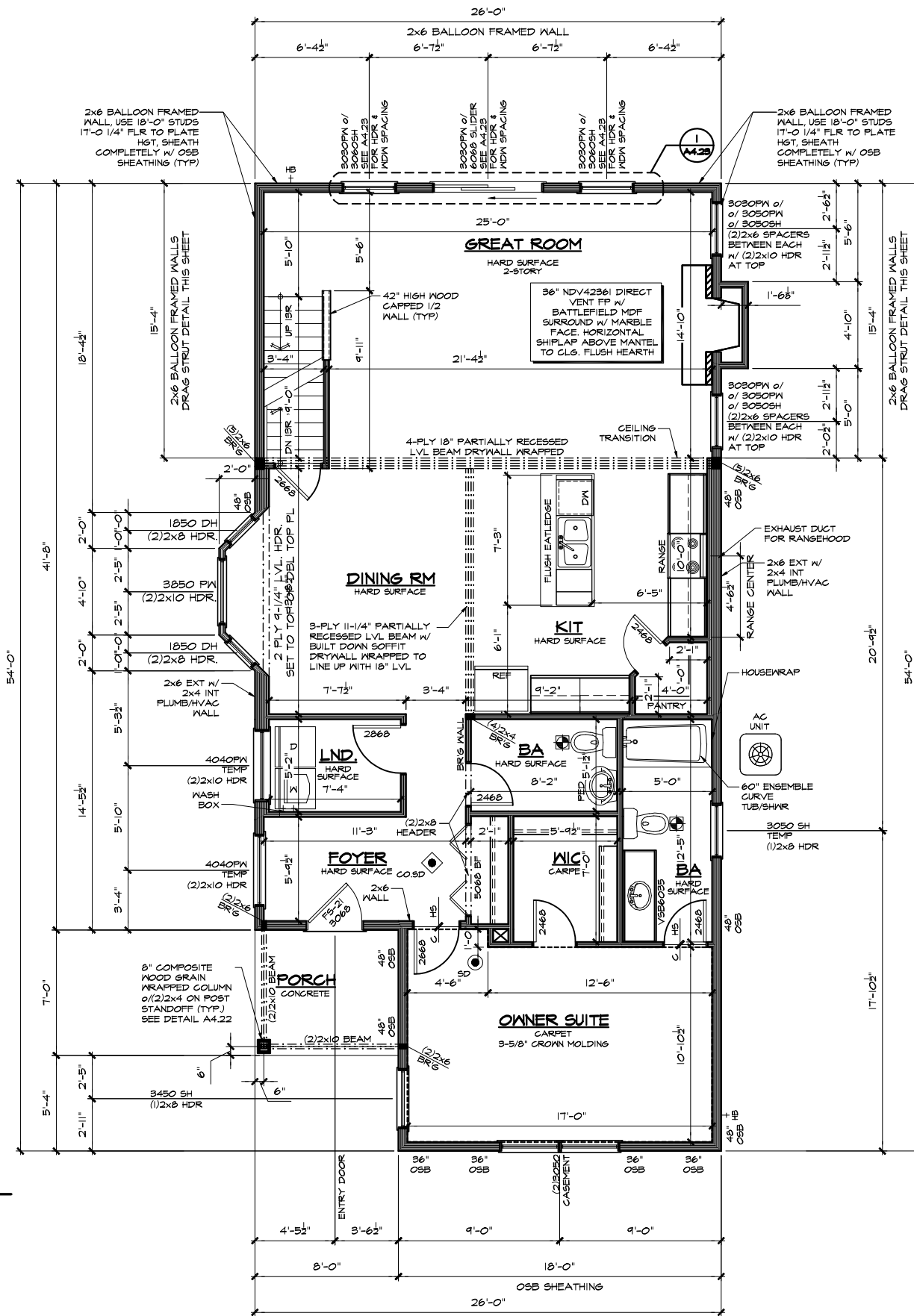
1. FILTER MEMBRANE OVER DRAIN TILE.
2. VAPOR BARRIER REQUIRED IN ALL SLAB AREAS.
3. 4 CRS FROST FTR REQUIRED

FRAMING:

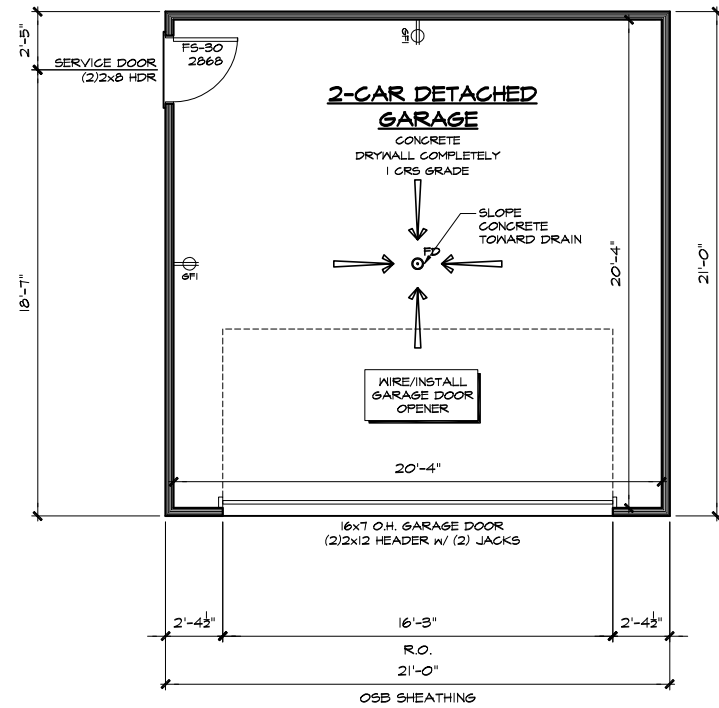
1. ICE AND WATER SHIELD TO BE INSTALLED AT ALL EAVES AND VALLEYS.
2. 3x3 LANDING REQUIRED ON ALL EXT DOORWAYS WHERE FINISHED GRADE IS GREATER THAN 2 RISERS.
3. FIRESTOPPING REQUIRED.
4. EXT WALL BEHIND TUBS/SHWRS MUST BE INSULATED & COVERED W/ HOUSEWRAP PRIOR TO ROUGH FRAME INSPECTION.



2x6 HEADER DETAILS



DRAG STRUT DETAIL
1/2" = 1'-0"



FIRST FLOOR PLAN

1/8" = 1'-0" WATERFRONT ELEVATION

WAYNE HOMES
— EST. 1973 —

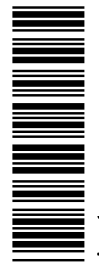
Lynden

FENGBI & XUE LI
1/1 GOLDENGATE AVE
ROCKY RIVER, OHIO 44116
AM #4412
CUYAHOGA CO.

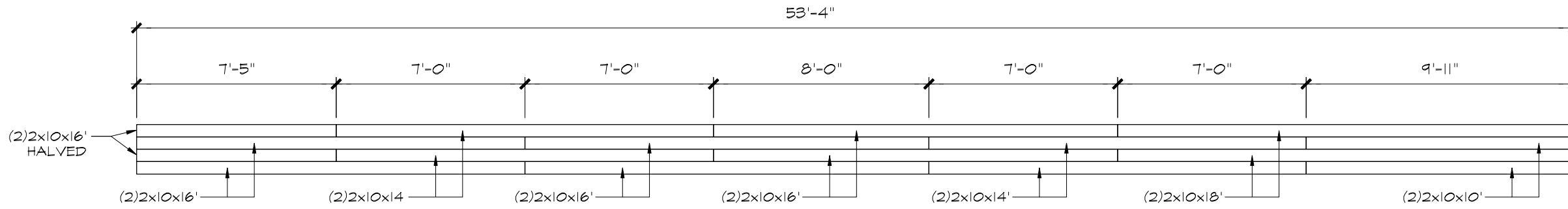
FIRST FLOOR PLAN

Wayne Homes expressly reserves its common law copyright and other property rights in these plans. These plans are not to be reproduced, changed, or copied in any form or manner, nor are they to be assigned to a third party without first obtaining the written permission and consent of Wayne Homes. In the event of unauthorized reuse of these plans by a third party, the third party shall be liable for all damages, including reasonable attorney's fees. Refer to contract for specific products selected. ©2008 Wayne Homes

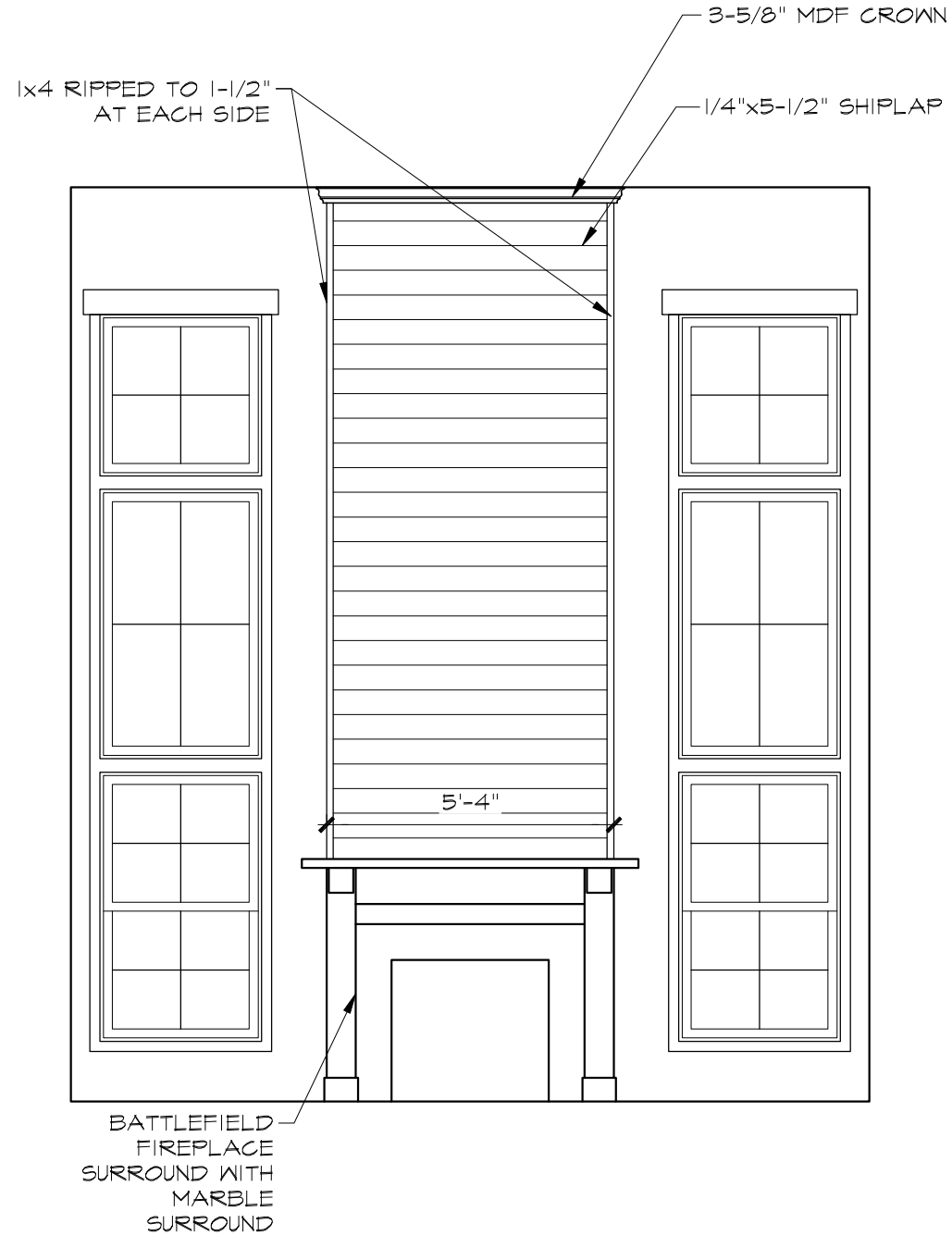
name	date
prelim:	N/A
perm:	HES 09/26/25
final:	
est:	
revisions:	
date:	03/03/26
drawn by:	HES



sheet: **A4.20**



1
A4.21
NTS
BEAM #1 LAYOUT



1
A4.24
FIREPLACE WALL ELEV.
NOT TO SCALE

WAYNE HOMES
— EST. 1973 —

Lynden

FENGBI & XUE LI
V/L GOLDENGATE AVE
ROCKY RIVER, OHIO 44116
AM #4412
CUYAHOGA CO.

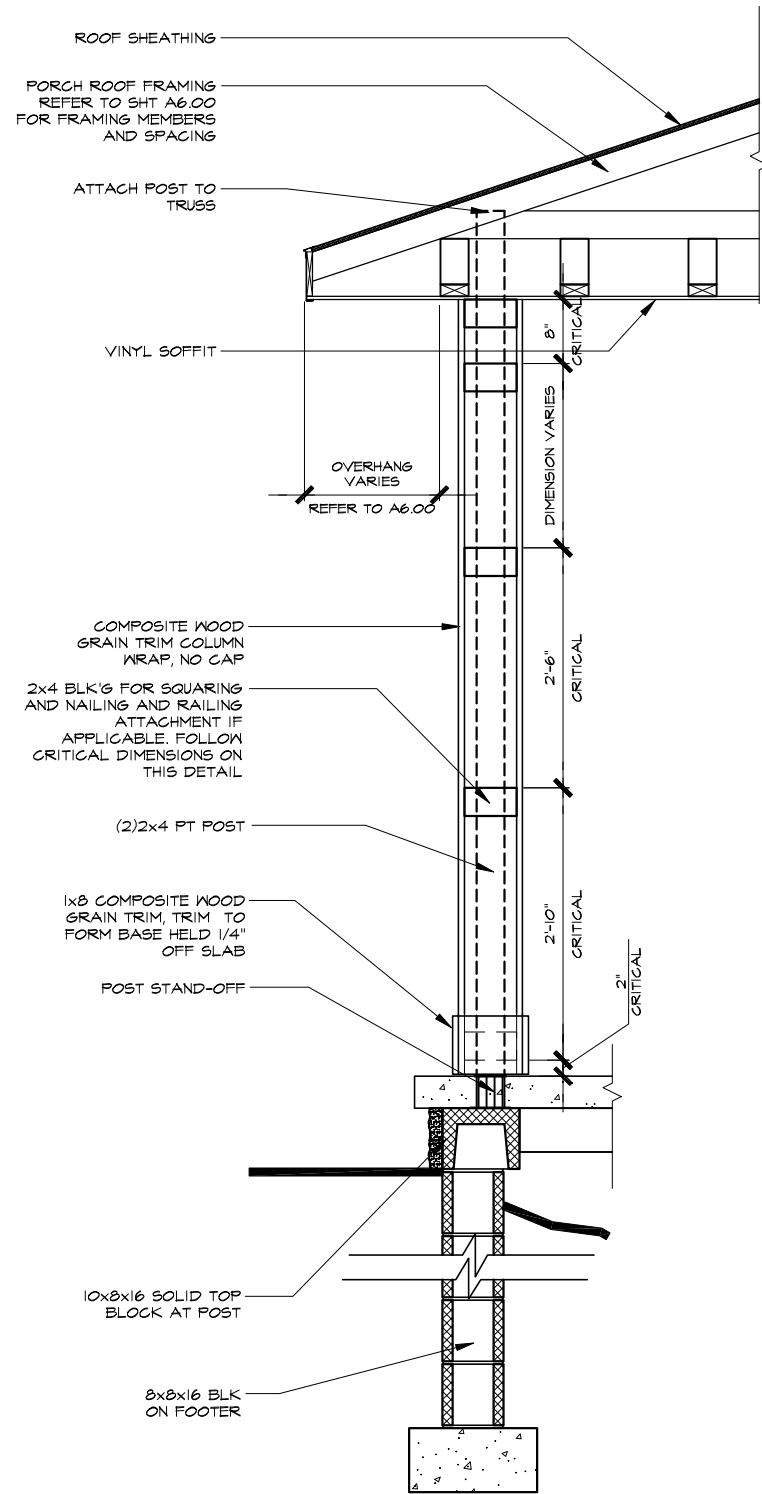
**MISCELLANEOUS
FRAMING DETAILS**

Wayne Homes expressly reserves its common law copyright and other property rights in these plans. These plans are not to be reproduced, changed, or copied in any form or manner, nor are they to be assigned to a third party without first obtaining the written permission and consent of Wayne Homes. In the event of unauthorized reuse of these plans by a third party, the third party shall be liable for all damages, including reasonable attorney's fees. Wayne Homes does not warrant or refer to contract for specific products selected. ©2008 Wayne Homes

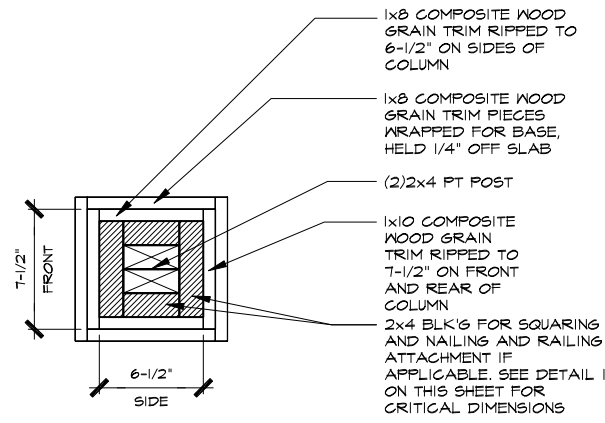
name	date
prelim:	N/A
perm:	HES 09/26/25
final:	
est:	
revisions:	
date:	drawn by:
03/03/26	HES



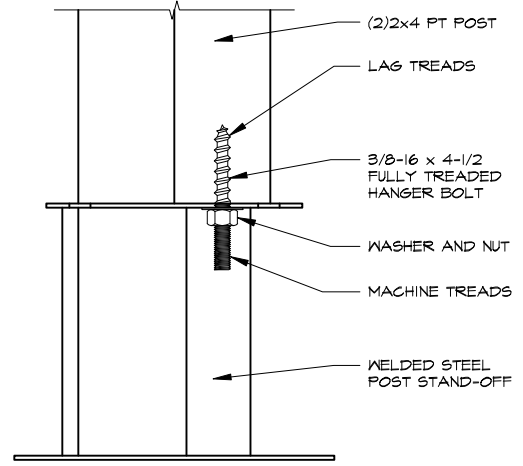
sheet: **A4.21**



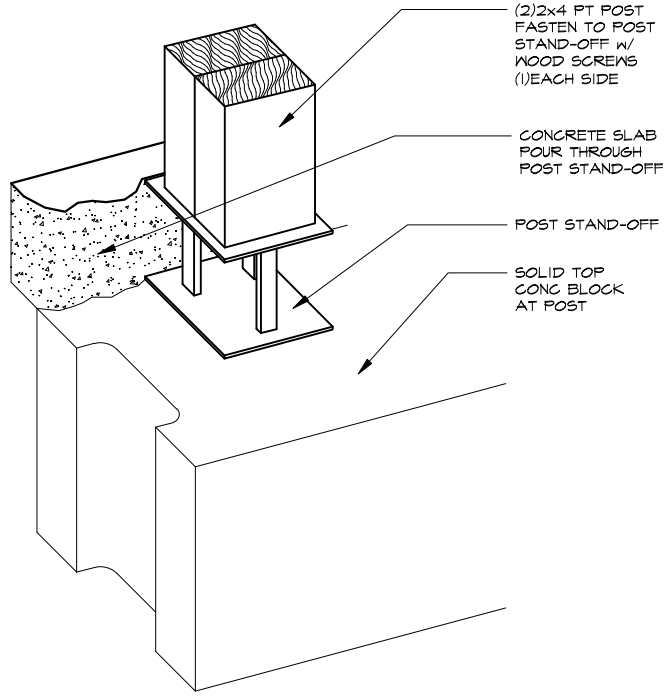
1
A4.22
1/2" = 1'-0"
WATERFRONT ELEVATION



2
A4.22
NOT TO SCALE



4
A4.22
NOT TO SCALE

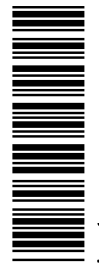


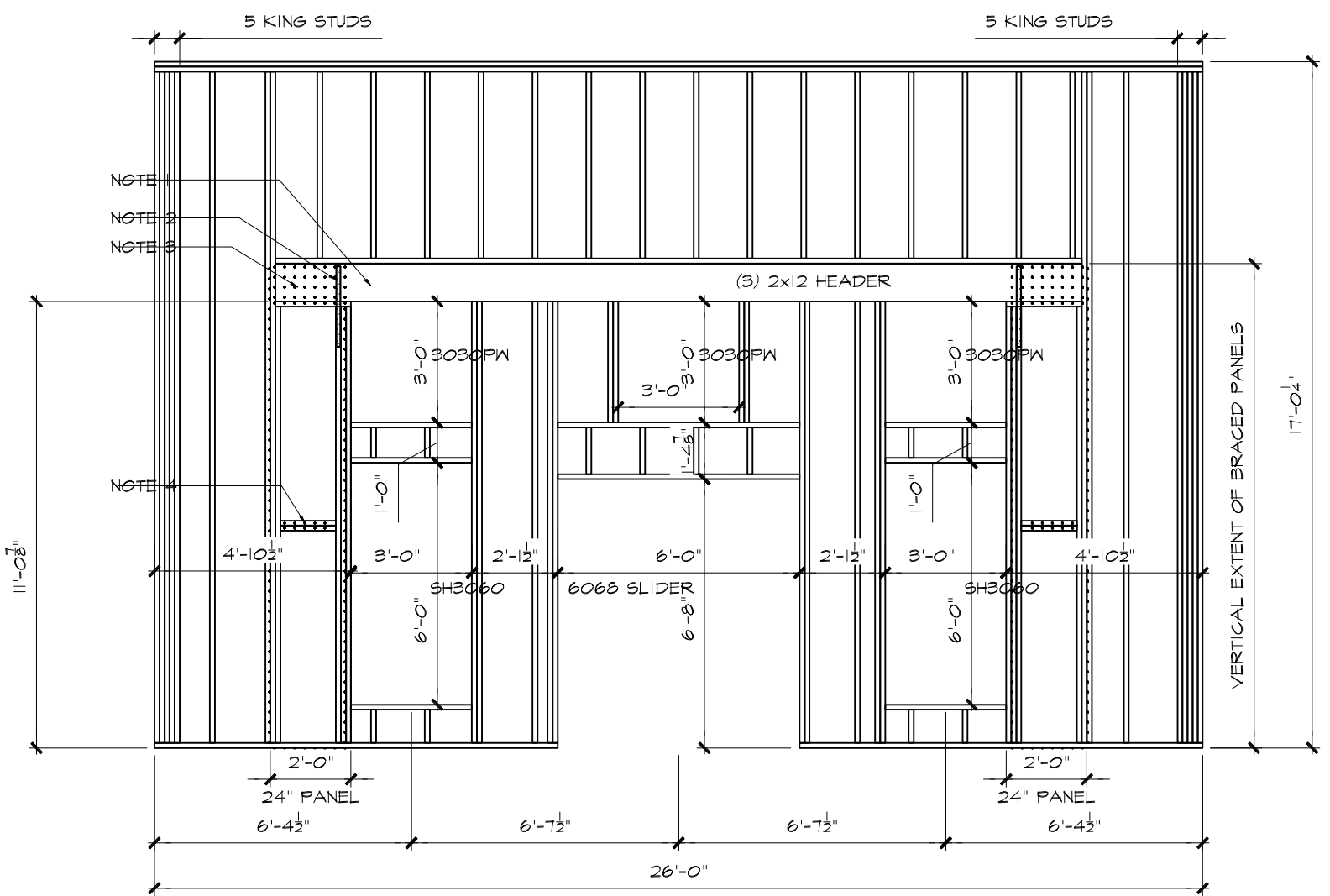
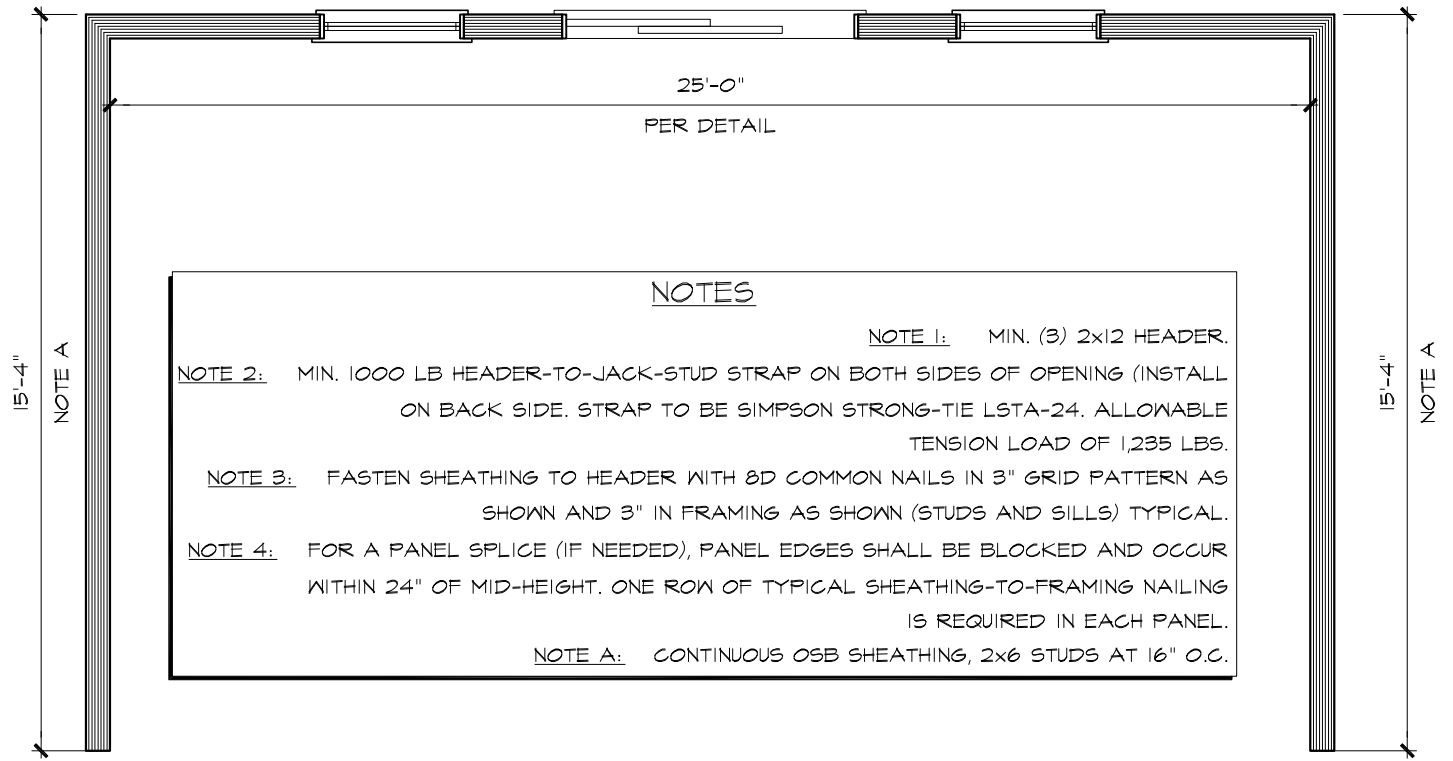
3
A4.22
NOT TO SCALE

MISCELLANEOUS FRAMING DETAILS

Wayne Homes expressly reserves its common law copyright and other property rights in these plans. These plans are not to be reproduced, changed, or copied in any form or manner, nor are they to be assigned to a third party without first obtaining the written permission and consent of Wayne Homes. In the event of unauthorized reuse of these plans by a third party, the third party shall be liable for all damages, including reasonable attorneys' fees, and shall be deemed to have accepted Wayne Homes' terms and conditions. Refer to contract for specific products selected. ©2008 Wayne Homes

name	date
prelim:	N/A N/A
perm:	HES 09/26/26
final:	
est:	
revisions:	
date	drawn by:
03/03/26	HES





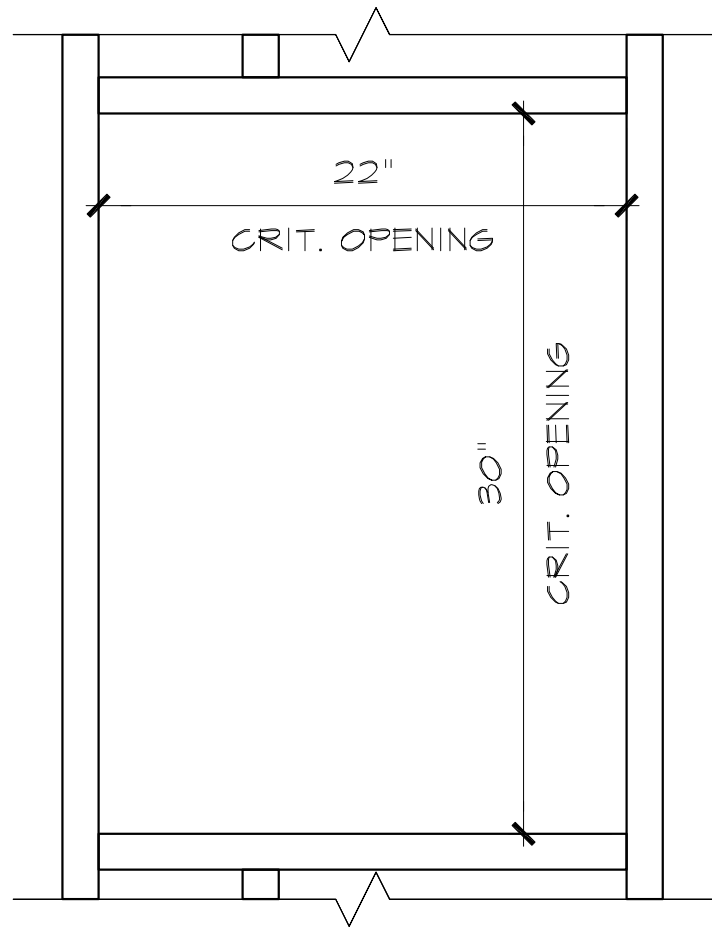
1 REAR WALL BRACING & FRAMING/PARTIAL BRACING PLAN
 A4.23 1/4" = 1'-0"



2 REAR WALL ELEV.
 A4.23 NOT TO SCALE

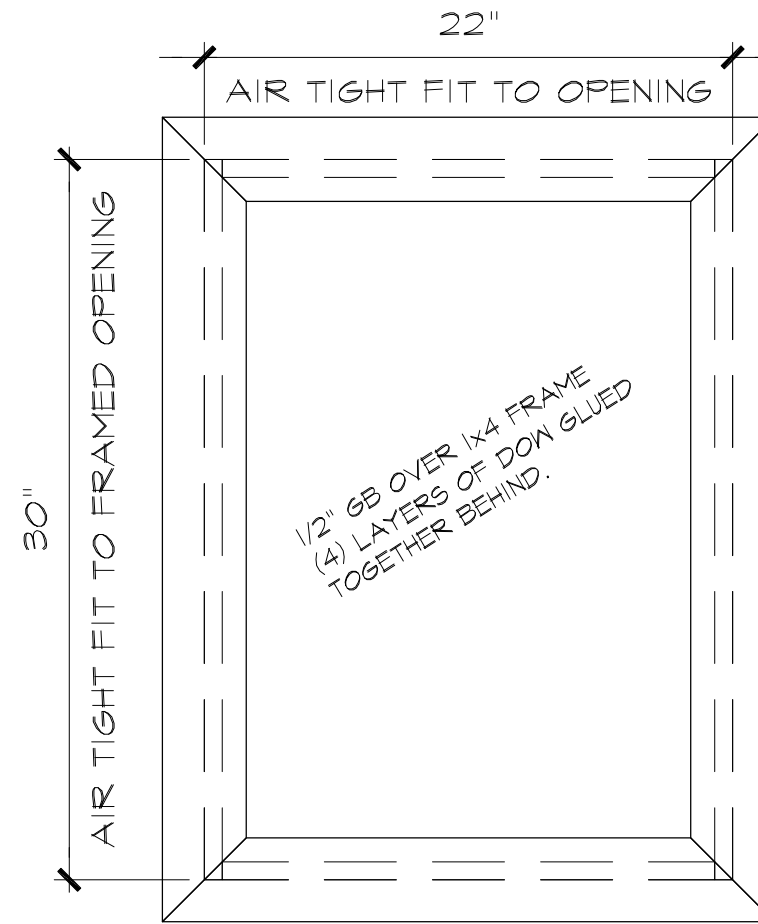
MISCELLANEOUS FRAMING DETAILS
 Wayne Homes expressly reserves its common law copyright and other property rights in these plans. These plans are not to be reproduced, changed, or copied in any form or manner, nor are they to be assigned to a third party without first obtaining the written permission and consent of Wayne Homes. In the event of any reuse or modification of these plans by a third party, the third party shall hold Wayne Homes harmless. Contact Wayne Homes for more information. Refer to contract for specific products selected. ©2008 Wayne Homes

name	date
prelim:	N/A
perm:	HES 09/26/25
final:	
est:	
revisions:	
date:	03/03/26
drawn by:	HES



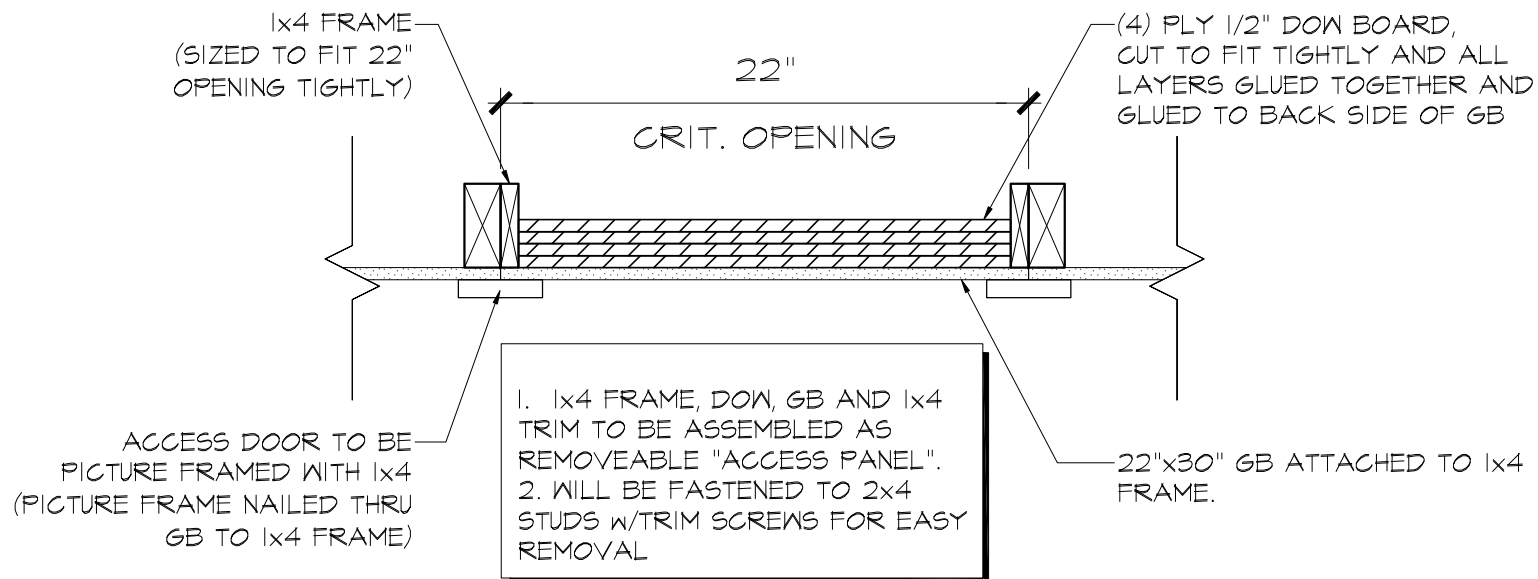
2
A-4.24 1-1/2" = 1'-0"

WALL ATTIC ACCESS ROUGH OPENING



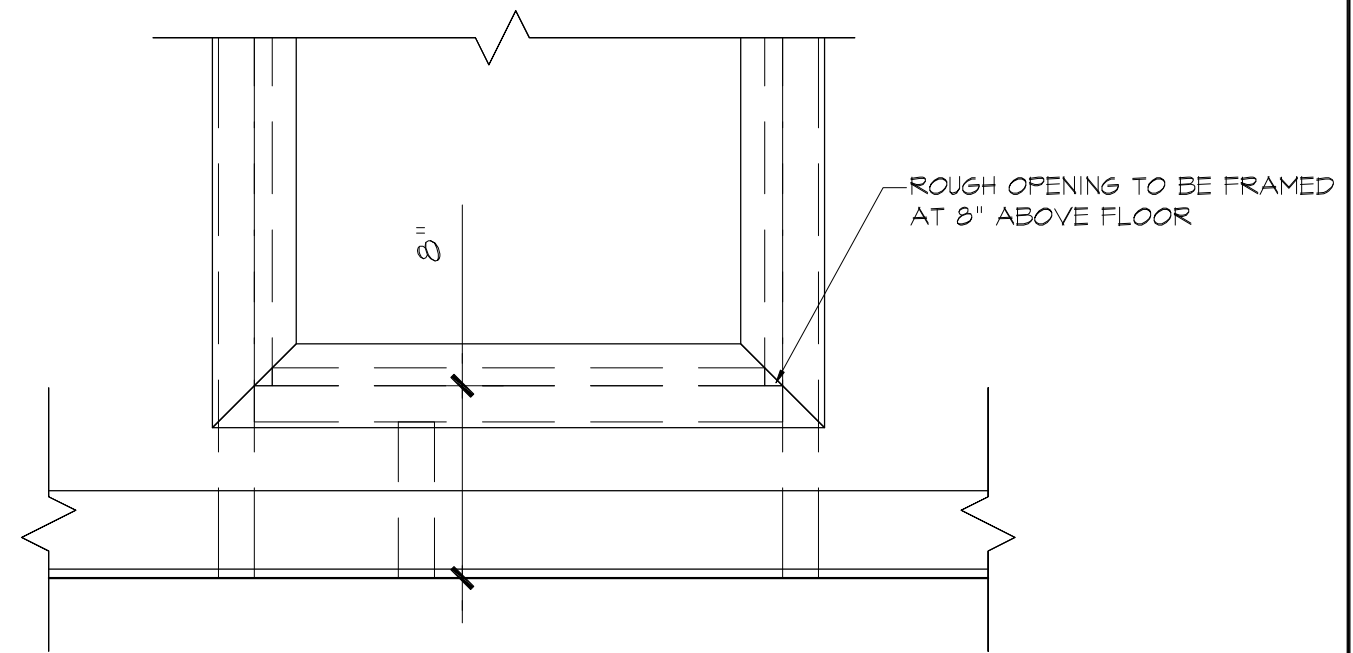
3
A-4.24 1-1/2" = 1'-0"

WALL ATTIC ACCESS FINISHED HATCH



1
A-4.24 1-1/2" = 1'-0"

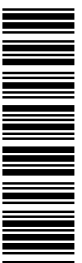
WALL ATTIC ACCESS CROSS SECTION

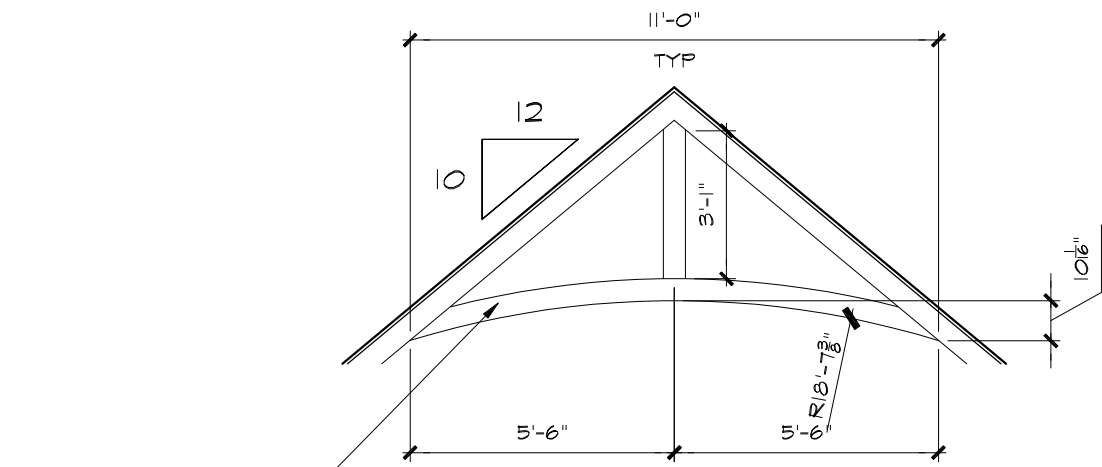


4
A-4.24 1-1/2" = 1'-0"

WALL ATTIC ACCESS

name	date
prelim:	N/A
perm:	HES 09/26/25
final:	
est:	
revisions:	
date:	03/03/28
drawn by:	HES



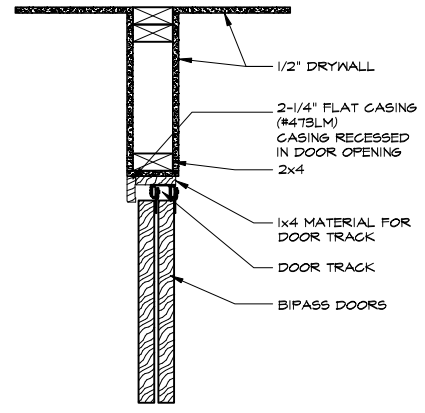
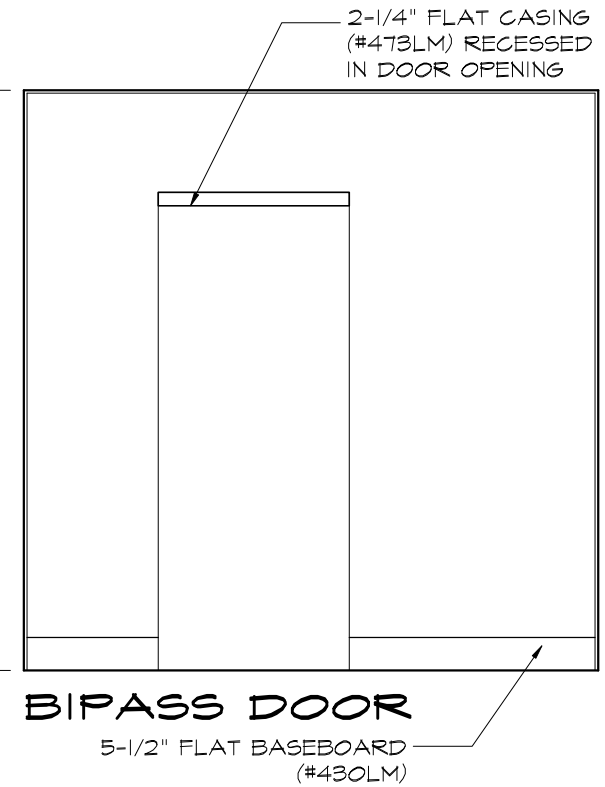
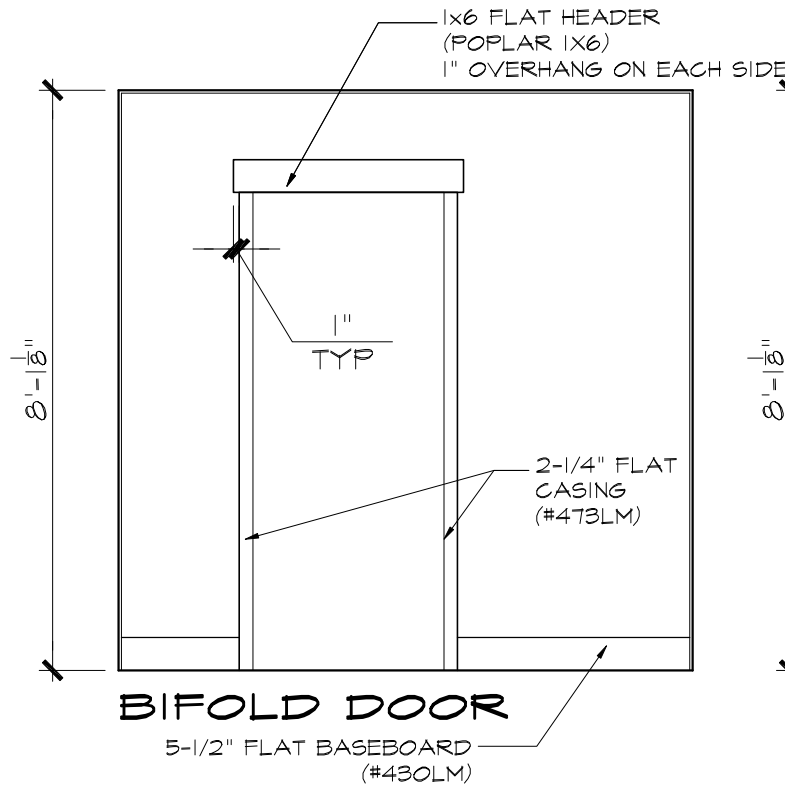
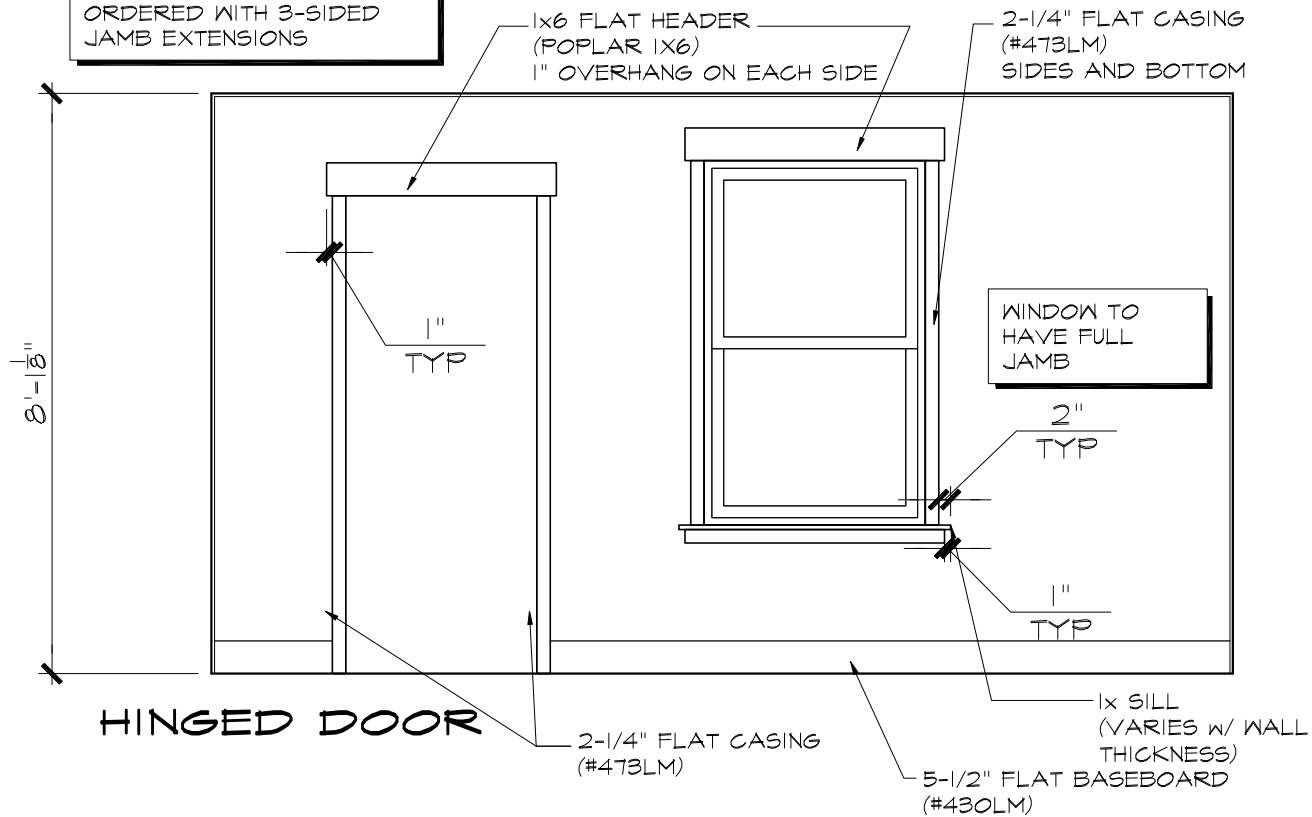


CUSTOM 5-1/2" PVC ARCHED GABLE BRACKET TO BE MADE IN FIELD.

CUSTOM GABLE BRACKET

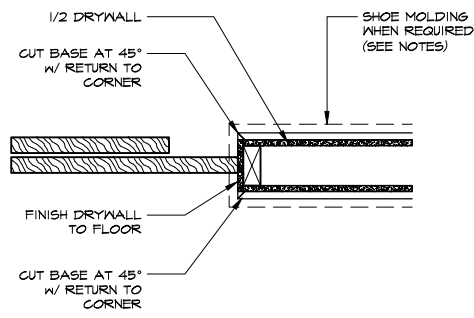
SCALE: 1/4" = 1'-0"

IF PELLA WOOD WINDOWS, ALL WINDOWS NEED TO BE ORDERED WITH 3-SIDED JAMB EXTENSIONS



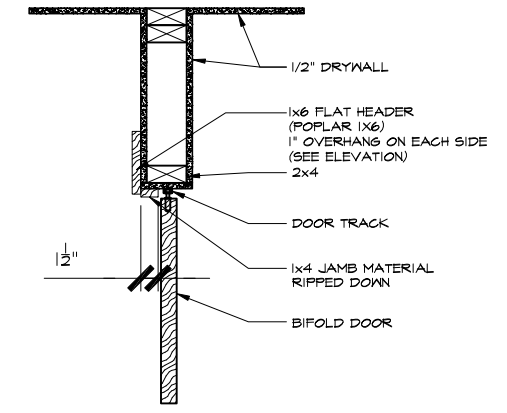
3 BIPASS DETAIL

N.T.S.



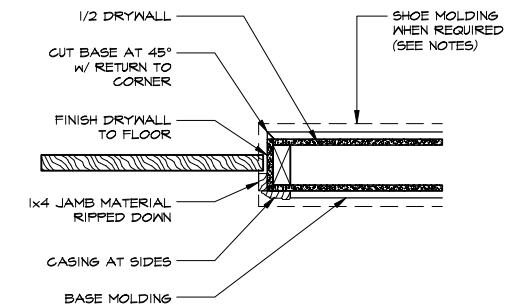
4 BIPASS DETAIL

N.T.S.



1 BIFOLD DETAIL

SCALE: N.T.S.
DOOR HEAD WITH HALF JAMBS



2 BIFOLD DETAIL

SCALE: N.T.S.
DOOR JAMB WITH HALF JAMBS

WAYNE HOMES
— EST. 1973 —

Lynden

FENGBI & XUE LI
V/L GOLDENGATE AVE
ROCKY RIVER, OHIO 44116
AM #4412
CUYAHOGA CO.

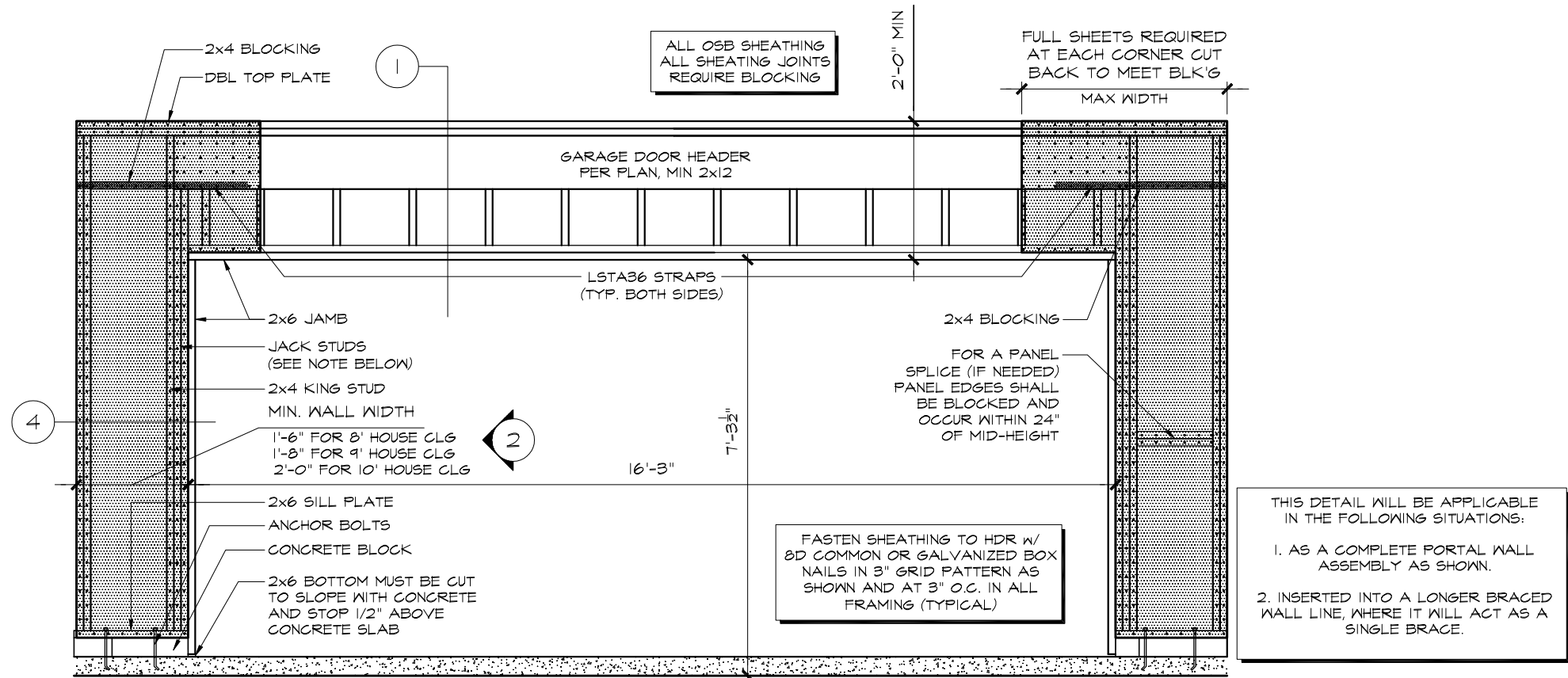
MISCELLANEOUS FRAMING DETAILS

Wayne Homes expressly reserves its common law copyright and other property rights in these plans. These plans are not to be reproduced, changed, or copied in any form or manner, nor are they to be assigned to a third party without first obtaining the written permission and consent of Wayne Homes. In the event of unauthorized reuse of these plans by a third party, the third party shall be liable for all damages, including reasonable attorney's fees. Refer to contract for specific products selected. ©2008 Wayne Homes

name	date
prelim:	N/A
perm:	HES 09/26/25
final:	
est:	
revisions:	
date	drawn by:
03/03/26	HES



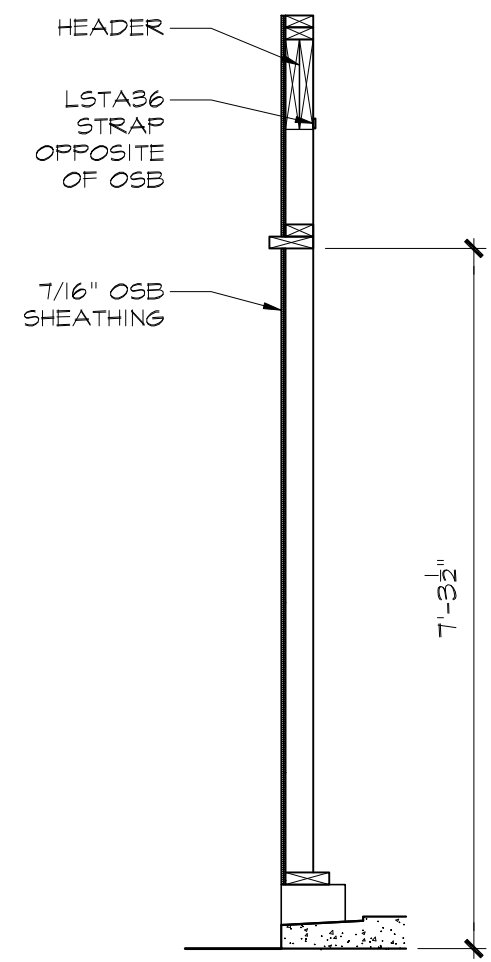
sheet: **A4.25**



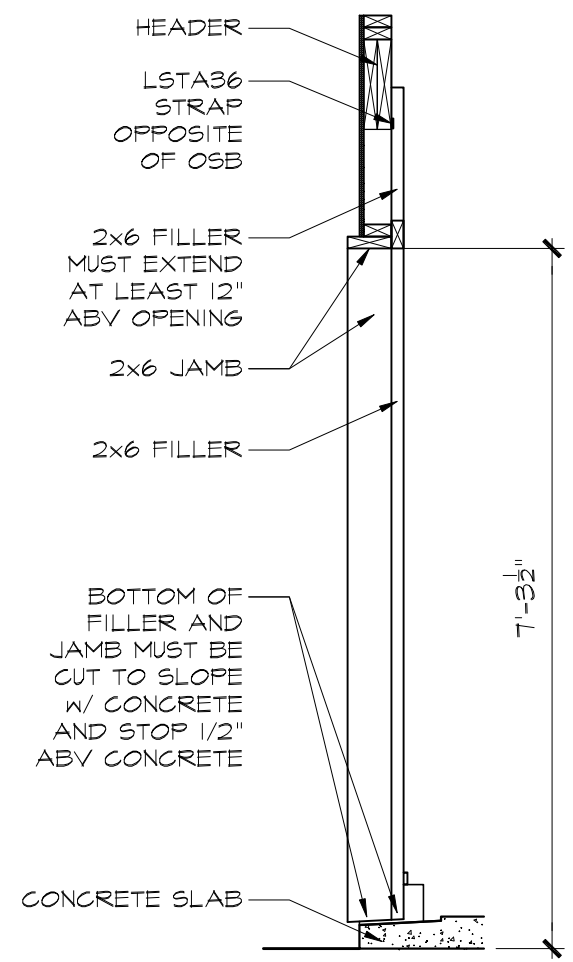
I.S.L.O GARAGE DOOR WALL DETAIL
SCALE: 3/8" = 1'-0"

THIS DETAIL WILL BE APPLICABLE IN THE FOLLOWING SITUATIONS:

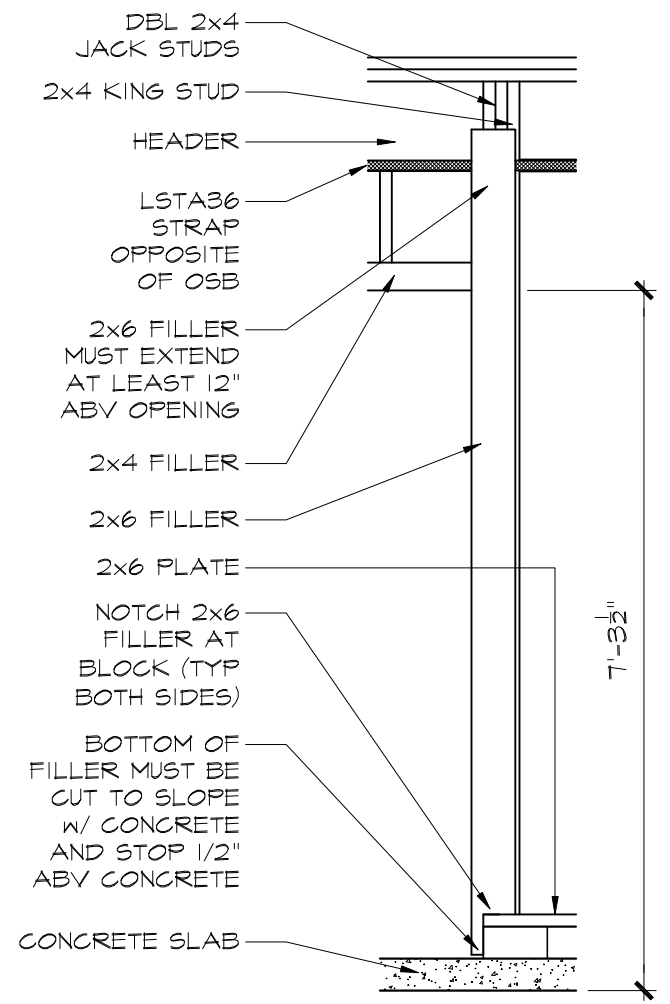
1. AS A COMPLETE PORTAL WALL ASSEMBLY AS SHOWN.
2. INSERTED INTO A LONGER BRACED WALL LINE, WHERE IT WILL ACT AS A SINGLE BRACE.



1 FRAMING CROSS SECTION
SCALE: 1/4" = 1'-0"



2 JAMB ELEVATION
SCALE: 1/4" = 1'-0"



3 2x4 FILLER ELEVATION
SCALE: 1/4" = 1'-0"

WAYNE HOMES
— EST. 1973 —

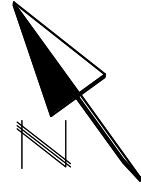
Lynden
FENGBI & XUE LI
V/L GOLDENGATE AVE
ROCKY RIVER, OHIO 44116
AM #4412
CUYAHOGA CO.

MISCELLANEOUS FRAMING DETAILS

Wayne Homes expressly reserves its common law copyright and other property rights in these plans. These plans are not to be reproduced, changed, or copied in any form or manner, nor are they to be assigned to a third party without their obtaining the written permission and consent of Wayne Homes. In the event of unauthorized reuse of these plans by a third party, the third party shall be liable for all costs and expenses incurred by Wayne Homes in connection with its enforcement of its intellectual property rights. Refer to contract for specific products selected. ©2018 Wayne Homes

name	date
prelim:	N/A N/A
perm:	HES 09/26/25
final:	
est:	
revisions:	
date	drawn by:
03/03/26	HES

sheet: **A4.26**



CONSTRUCTION NOTES:

GENERAL CONSTRUCTION:

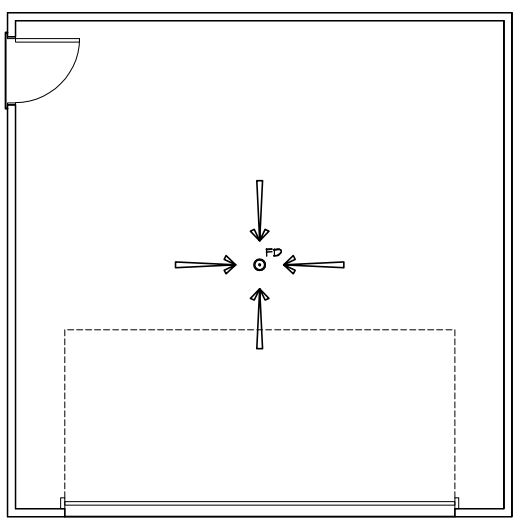
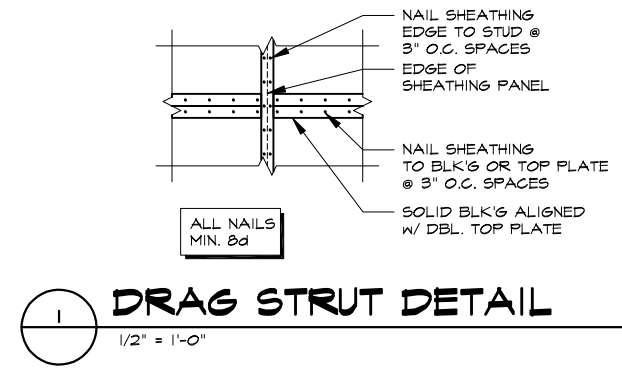
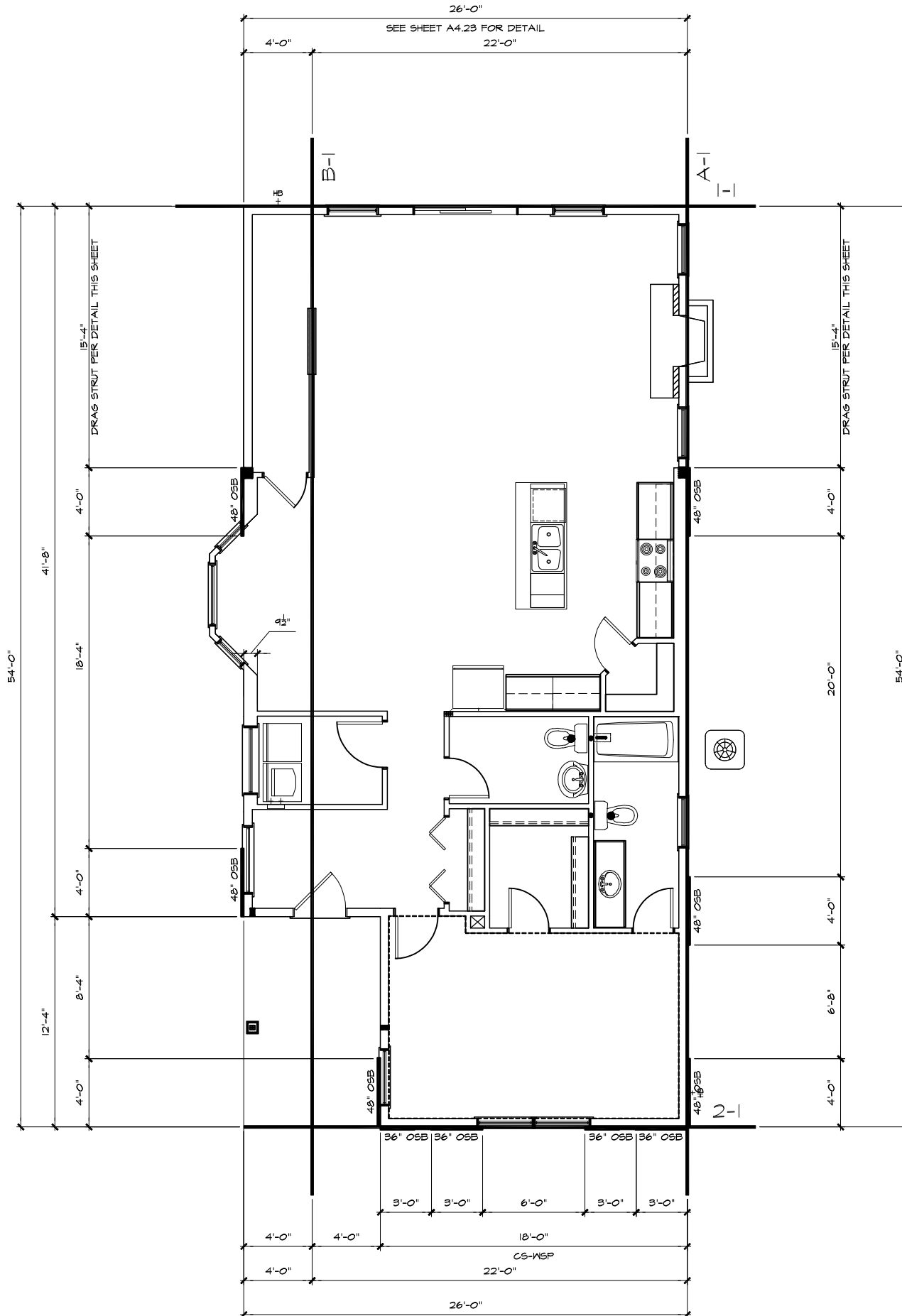
1. THESE PLANS WILL COMPLY WITH 2023 NEC.
2. UP TO (2) CONTINUOUS RUN FANS.
3. CRAFTSMAN III STYLE INTERIOR DOORS
4. CRAFTSMAN TRIM PACKAGE #2
5. KNOCKDOWN STOMPED CLG TEXTURE

MASONRY/CONCRETE:

1. FILTER MEMBRANE OVER DRAIN TILE.
2. VAPOR BARRIER REQUIRED IN ALL SLAB AREAS.
3. 4 CRS FROST FTR REQUIRED

FRAMING:

1. ICE AND WATER SHIELD TO BE INSTALLED AT ALL EAVES AND VALLEYS.
2. 3x3' LANDING REQUIRED ON ALL EXT DOORWAYS WHERE FINISHED GRADE IS GREATER THAN 2 RISERS
3. FIRESTOPPING REQUIRED.
4. EXT WALL BEHIND TUBS/SHWRS MUST BE INSULATED & COVERED W/ HOUSEWRAP PRIOR TO ROUGH FRAME INSPECTION.



FIRST FLOOR WALL BRACING PLAN

1/8" = 1'-0" WATERFRONT ELEVATION

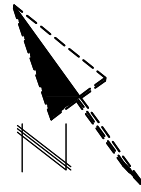
WAYNE HOMES
— EST. 1973 —

Lynden
FENGBI & XUE LI
V/L GOLDENGATE AVE
ROCKY RIVER, OHIO 44116
AM #4412
CUYAHOGA CO.

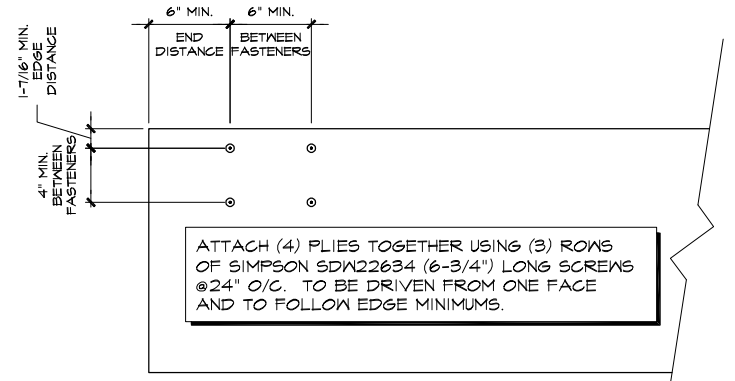
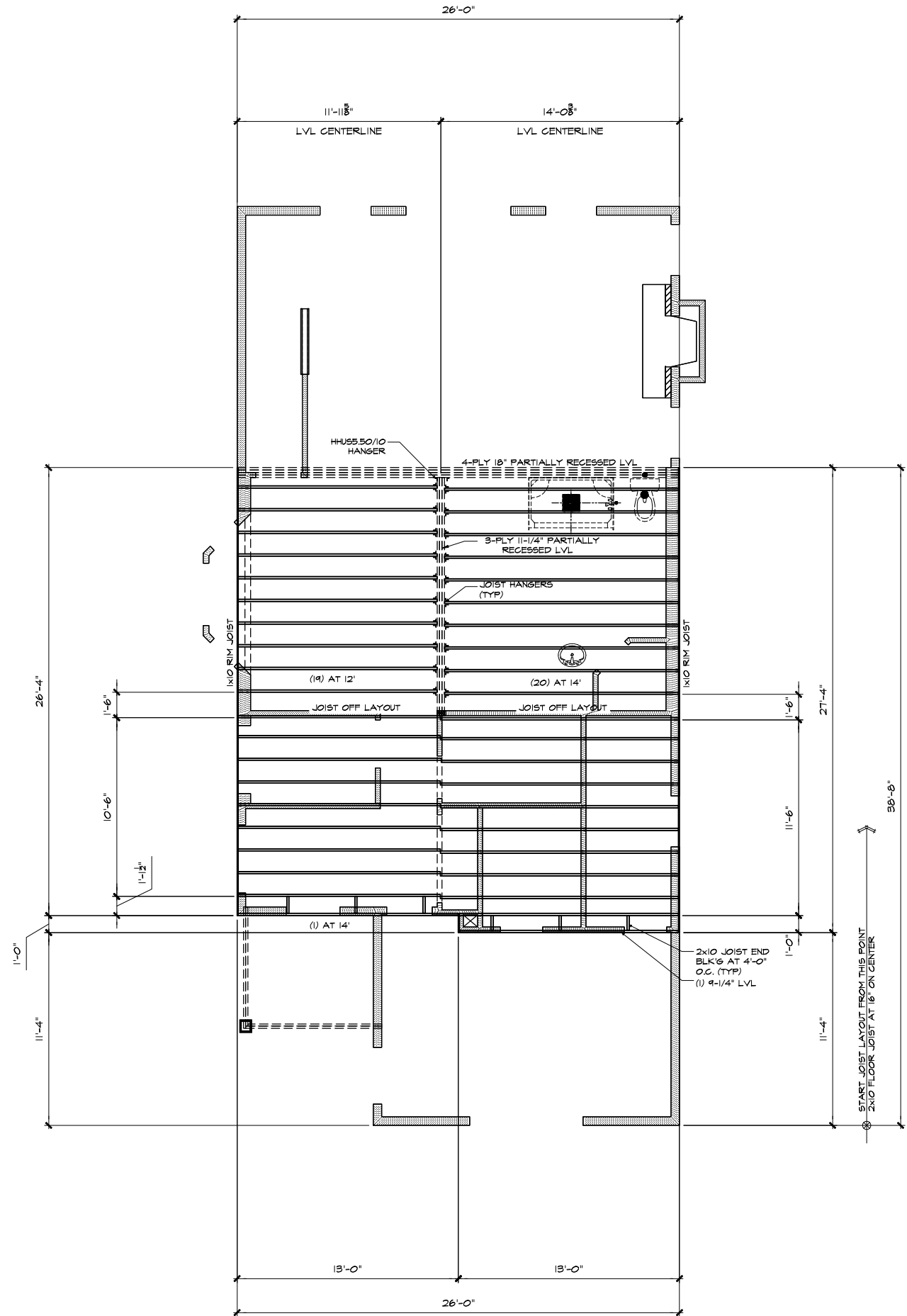
FIRST FLOOR WALL BRACING
Wayne Homes expressly reserves its common law copyright and other property rights in these plans. These plans are not to be reproduced, changed, or copied in any form or manner, nor are they to be assigned to a third party without first obtaining the written permission and consent of Wayne Homes. In the event of unauthorized reuse of these plans by a third party, the third party shall be held liable for any and all damages. Refer to contract for specific products selected. ©2008 Wayne Homes

name	date
prelim: N/A	N/A
perm: HES	09/26/25
final:	
est:	
revisions:	
date:	drawn by:
03/03/26	HES

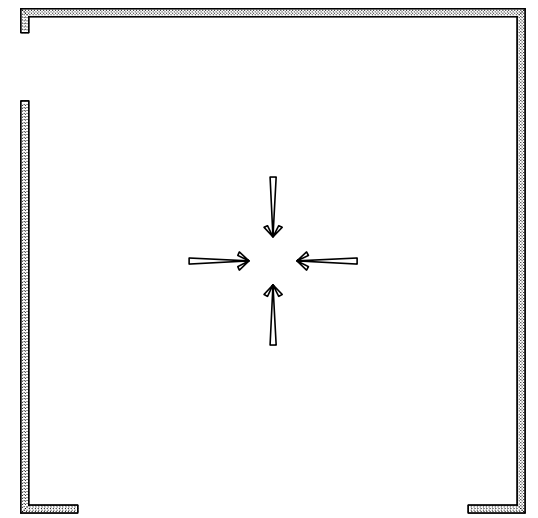
sheet: **A4.50**



- CONSTRUCTION NOTES:**
- GENERAL CONSTRUCTION:**
1. THESE PLANS WILL COMPLY WITH 2023 NEC.
 2. UP TO (2) CONTINUOUS RUN FANS.
 3. CRAFTSMAN III STYLE INTERIOR DOORS
 4. CRAFTSMAN TRIM PACKAGE #2
 5. KNOCKDOWN STOMPED CLG TEXTURE
- MASONRY/CONCRETE:**
1. FILTER MEMBRANE OVER DRAIN TILE.
 2. VAPOR BARRIER REQUIRED IN ALL SLAB AREAS.
 3. 4 CRS FROST FTR REQUIRED
- FRAMING:**
1. ICE AND WATER SHIELD TO BE INSTALLED AT ALL EAVES AND VALLEYS.
 2. 3'x3' LANDING REQUIRED ON ALL EXT DOORWAYS WHERE FINISHED GRADE IS GREATER THAN 2 RIGERS
 3. FIRESTOPPING REQUIRED.
 4. EXT WALL BEHIND TUBS/SHWRS MUST BE INSULATED & COVERED W/ HOUSEWRAP PRIOR TO ROUGH FRAME INSPECTION.



18" LVL SCREW PATTERN
N.T.S.



SECOND FLOOR FRAMING PLAN
1/8" = 1'-0" WATERFRONT ELEVATION

WAYNE HOMES
— EST. 1973 —

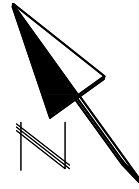
Lynden
FENGBI & XUE LI
V/L GOLDENGATE AVE
ROCKY RIVER, OHIO 44116
AM #4412
CUYAHOGA CO.

SECOND FLOOR FRAMING PLAN

Wayne Homes expressly reserves its common law copyright and other property rights in these plans. These plans are not to be reproduced, changed, or copied in any form or manner, nor are they to be assigned to a third party without first obtaining the written permission and consent of Wayne Homes. In the event of unauthorized reuse of these plans by a third party, the third party shall be held liable for all damages, including attorney's fees, incurred by Wayne Homes. Refer to contract for specific products selected. ©2008 Wayne Homes

name	date
prelim: N/A	N/A
perm: HES	09/26/25
final:	
est:	
revisions:	
date: 03/03/26	drawn by: HES

sheet: **A5.00**



CONSTRUCTION NOTES:

GENERAL CONSTRUCTION:

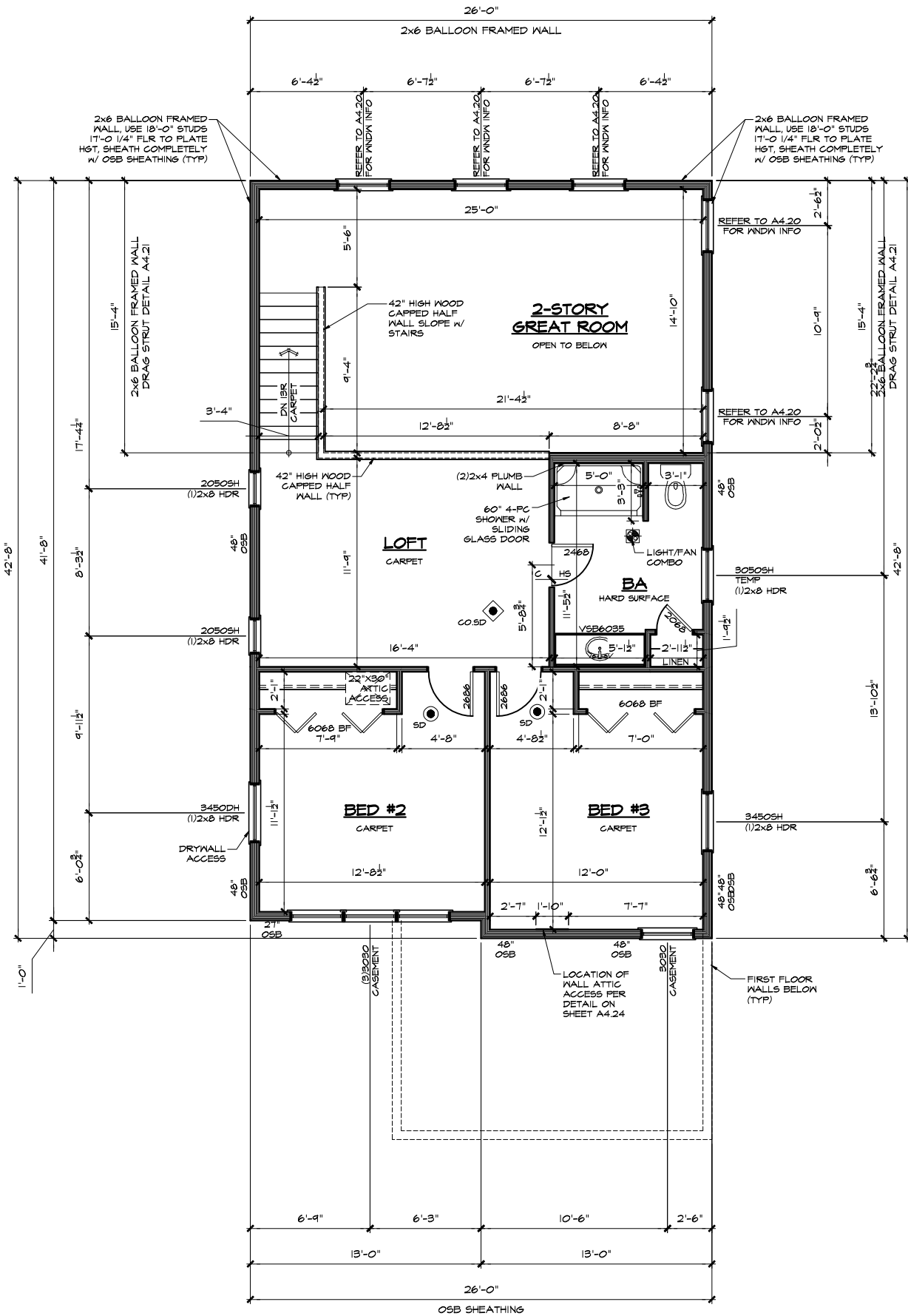
1. THESE PLANS WILL COMPLY WITH 2023 NEC.
2. UP TO (2) CONTINUOUS RUN FANS.
3. CRAFTSMAN III STYLE INTERIOR DOORS
4. CRAFTSMAN TRIM PACKAGE #2
5. KNOCKDOWN STOMPED CLG TEXTURE

MASONRY/CONCRETE:

1. FILTER MEMBRANE OVER DRAIN TILE.
2. VAPOR BARRIER REQUIRED IN ALL SLAB AREAS.
3. 4 CRS FROST FTR REQUIRED

FRAMING:

1. ICE AND WATER SHIELD TO BE INSTALLED AT ALL EAVES AND VALLEYS.
2. 3x3" LANDING REQUIRED ON ALL EXT DOORWAYS WHERE FINISHED GRADE IS GREATER THAN 2 RISERS
3. FIRESTOPPING REQUIRED.
4. EXT WALL BEHIND TUBS/SHOWERS MUST BE INSULATED & COVERED W/ HOUSEWRAP PRIOR TO ROUGH FRAME INSPECTION.



SECOND FLOOR PLAN

1/8" = 1'-0" WATERFRONT ELEVATION

WAYNE HOMES
— EST. 1973 —

Lynden

FENGBI & XUE LI
V/L GOLDENGATE AVE
ROCKY RIVER, OHIO 44116
AM #4412
CUYAHOGA CO.

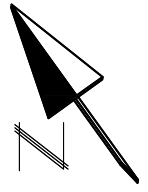
SECOND FLOOR PLAN

Wayne Homes expressly reserves its common law copyright and other property rights in these plans. These plans are not to be reproduced, changed, or copied in any form or manner, nor are they to be assigned to a third party without first obtaining the written permission and consent of Wayne Homes. In the event of unauthorized reuse of these plans by a third party, the third party shall be liable for all damages, including reasonable attorney's fees. Refer to contract for specific products selected. ©2008 Wayne Homes

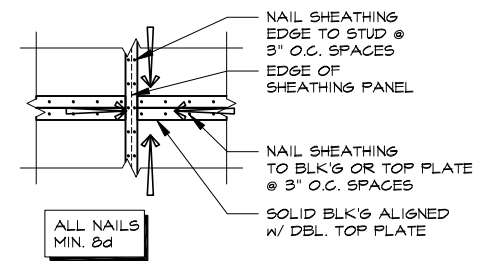
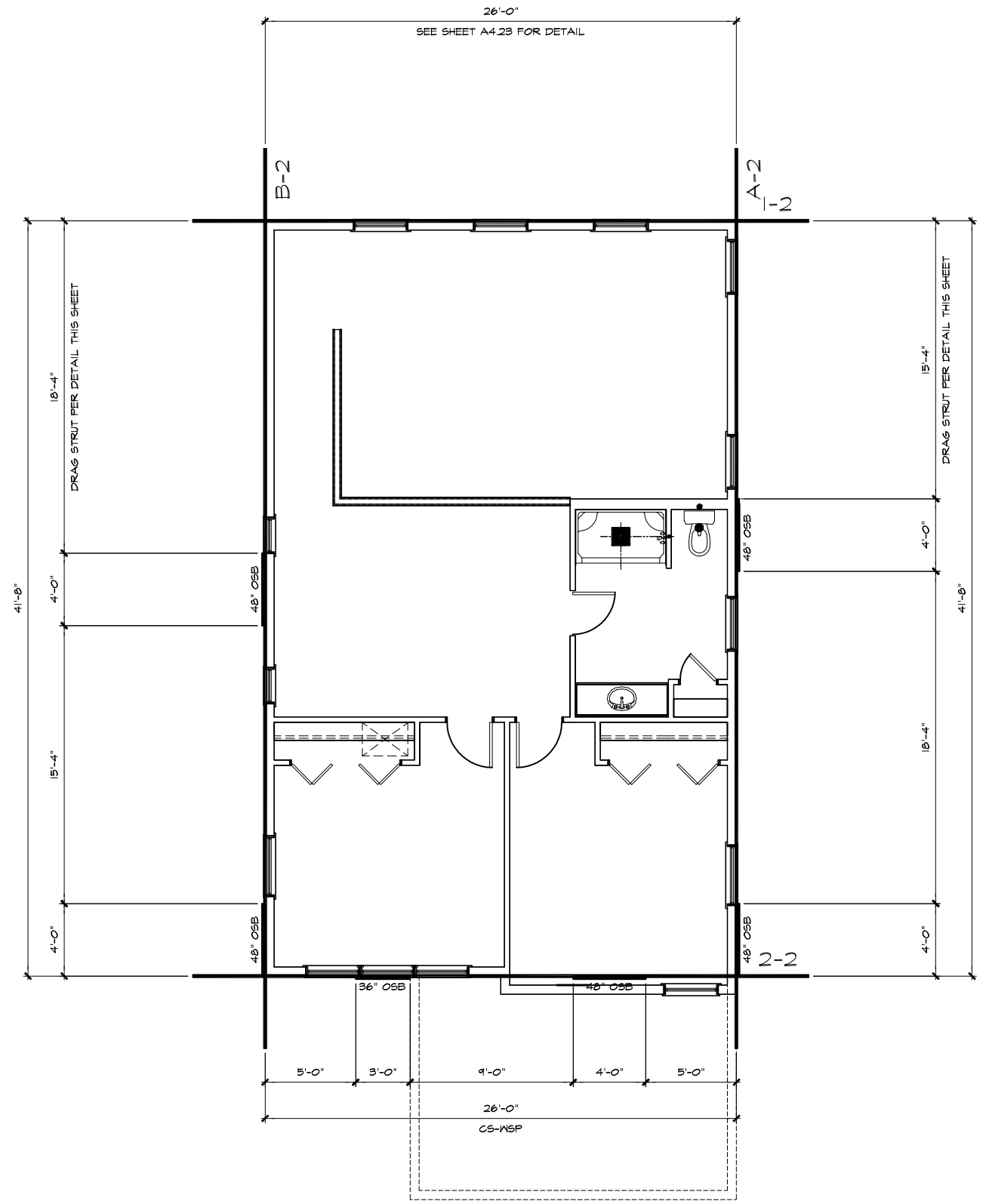
	name	date
prelim:	N/A	N/A
perm:	HES	09/26/25
final:		
est:		
revisions:		
date:	03/03/26	drawn by:
		HES



sheet: **A5.20**



- CONSTRUCTION NOTES:**
- GENERAL CONSTRUCTION:**
1. THESE PLANS WILL COMPLY WITH 2023 NEC.
 2. UP TO (2) CONTINUOUS RUN FANS.
 3. CRAFTSMAN III STYLE INTERIOR DOORS
 4. CRAFTSMAN TRIM PACKAGE #2
 5. KNOCKDOWN STOMPED CLG TEXTURE
- MASONRY/CONCRETE:**
1. FILTER MEMBRANE OVER DRAIN TILE.
 2. VAPOR BARRIER REQUIRED IN ALL SLAB AREAS.
 3. 4 CRS FROST FTR REQUIRED
- FRAMING:**
1. ICE AND WATER SHIELD TO BE INSTALLED AT ALL EAVES AND VALLEYS.
 2. 3'x3' LANDING REQUIRED ON ALL EXT DOORWAYS WHERE FINISHED GRADE IS GREATER THAN 2 RISERS
 3. FIRESTOPPING REQUIRED.
 4. EXT WALL BEHIND TUBS/SHOWERS MUST BE INSULATED & COVERED W/ HOUSEWRAP PRIOR TO ROUGH FRAME INSPECTION.



DRAG STRUT DETAIL
1/2" = 1'-0"

SECOND FLOOR WALL BRACING PLAN

1/8" = 1'-0" WATERFRONT ELEVATION

WAYNE HOMES
— EST. 1973 —

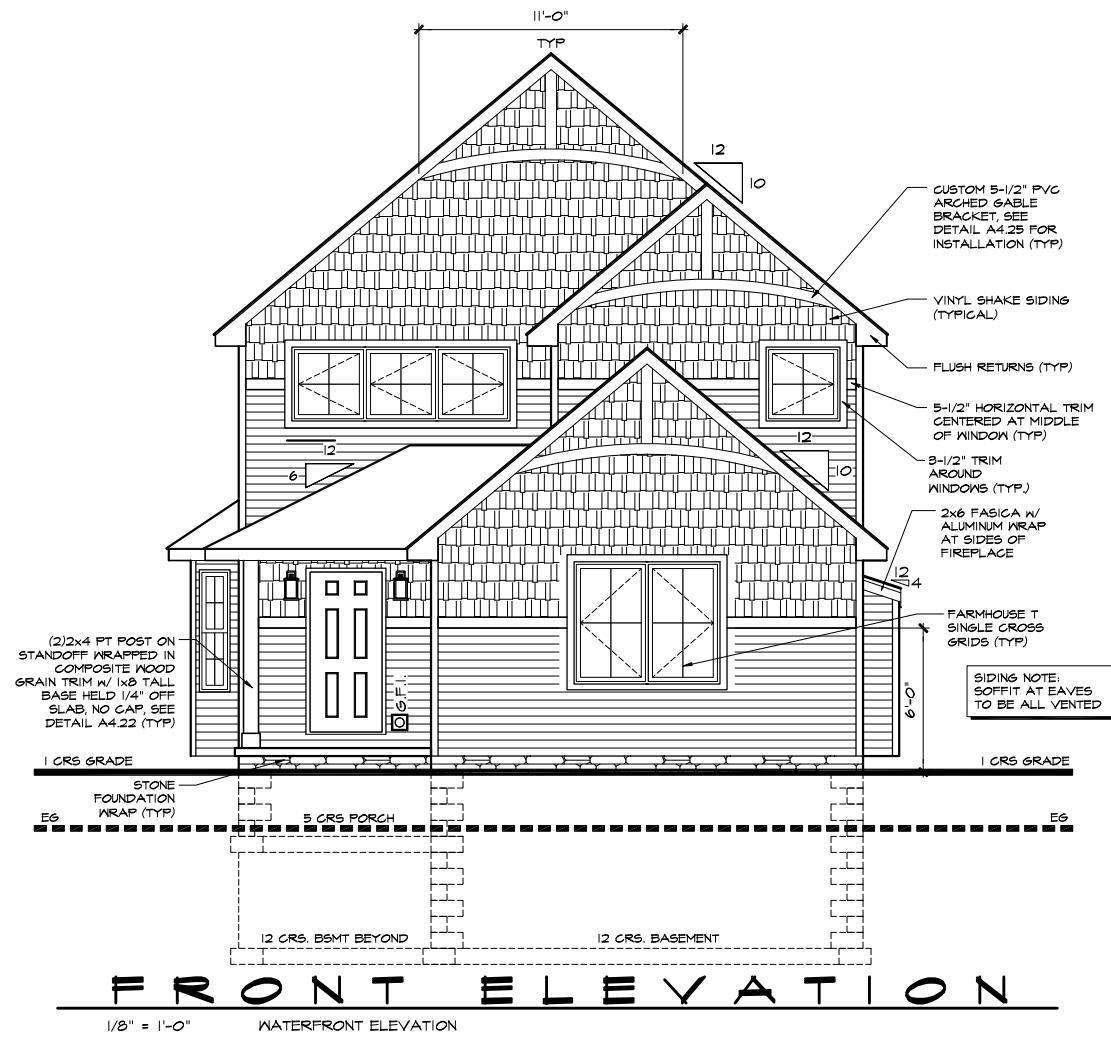
Lynden
FENGBI & XUE LI
V/L GOLDENGATE AVE
ROCKY RIVER, OHIO 44116
AM #4412
CUYAHOGA CO.

SECOND FLOOR WALL BRACING

Wayne Homes expressly reserves its common law copyright and other property rights in these plans. These plans are not to be reproduced, changed, or copied in any form or manner, nor are they to be assigned to a third party without first obtaining the written permission and consent of Wayne Homes. In the event of unauthorized reuse of these plans by a third party, the third party shall be liable for all damages, including reasonable attorney's fees, and shall be liable to contract for specific products selected. ©2008 Wayne Homes

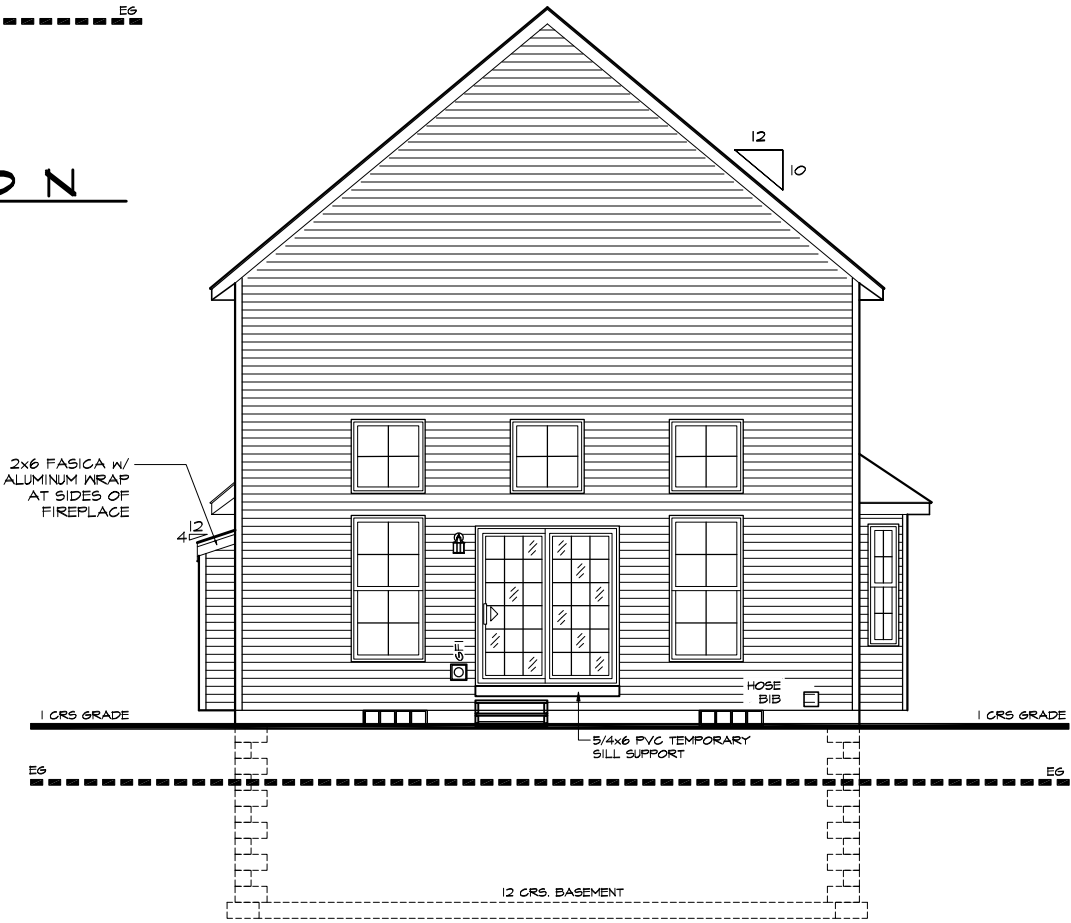
	name	date
prelim:	N/A	N/A
perm:	HES	09/26/25
final:		
est:		
revisions:		
date:	03/03/26	drawn by: HES

sheet: **A5.50**



FRONT ELEVATION

1/8" = 1'-0" WATERFRONT ELEVATION



REAR ELEVATION

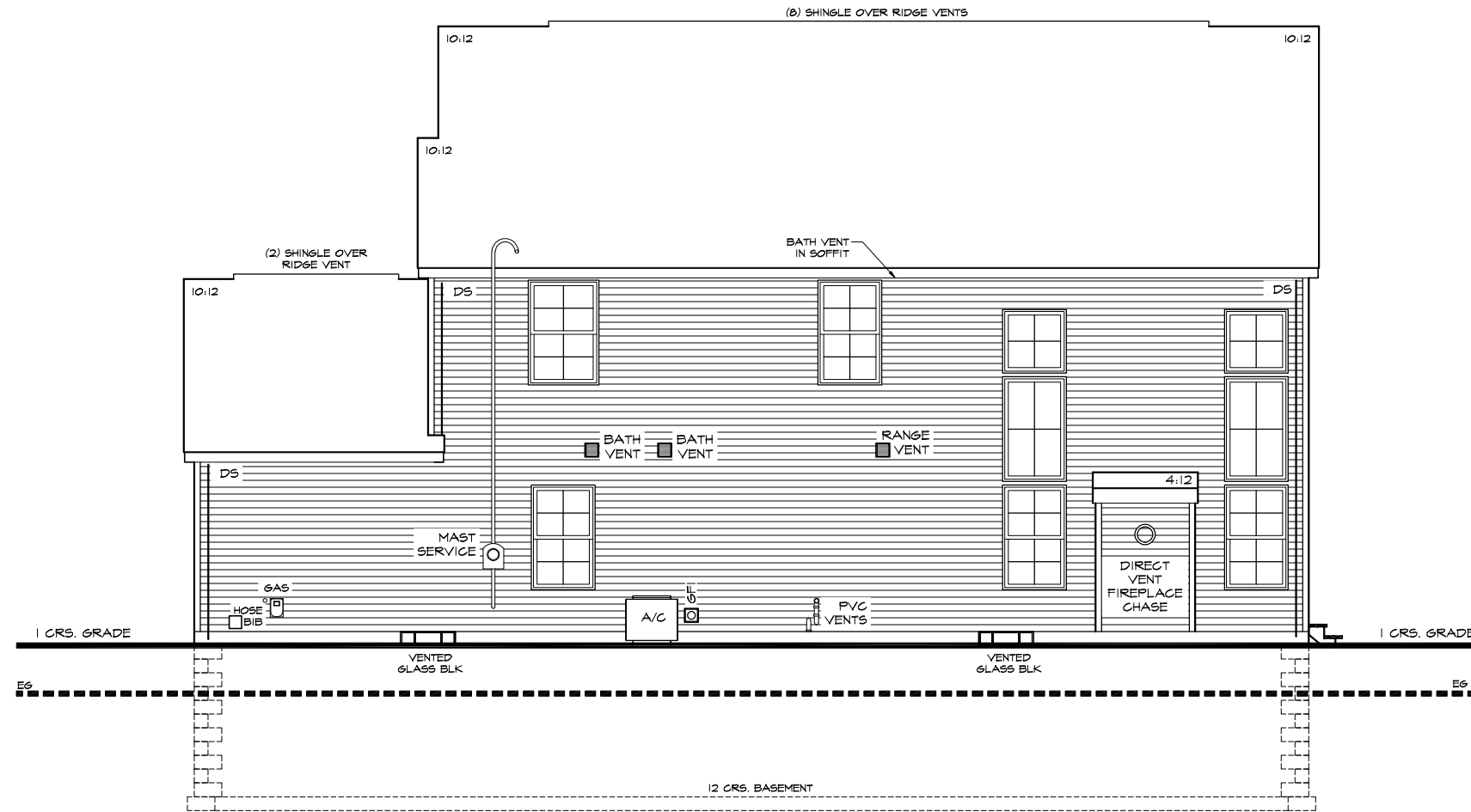
1/8" = 1'-0" WATERFRONT ELEVATION

Lynden
FENGBI & XUE LI
V/L GOLDENGATE AVE
ROCKY RIVER, OHIO 44116
AM #4412
CUYAHOGA CO.

FRONT & REAR ELEVATIONS

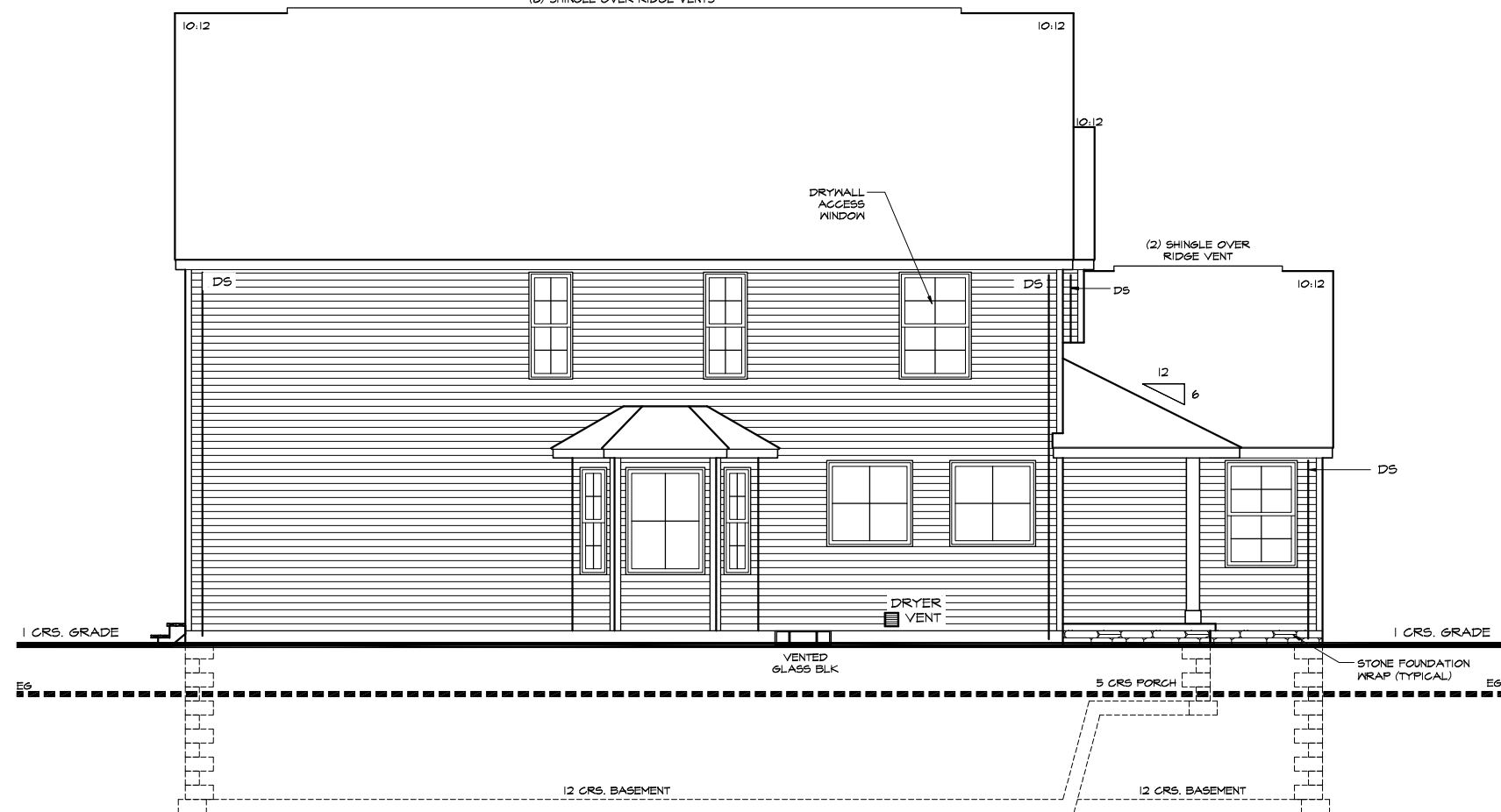
Wayne Homes expressly reserves its common law copyright and other property rights in these plans. These plans are not to be reproduced, changed, or copied in any form or manner, nor are they to be assigned to a third party without first obtaining the written permission and consent of Wayne Homes. In the event of unauthorized reuse of these plans by a third party, the third party shall be liable for all damages, including reasonable attorney's fees, from finished product. Refer to contract for specific products selected. ©2008 Wayne Homes

name	date
prelim:	N/A N/A
perm:	HES 09/26/25
final:	
est:	
revisions:	
date:	drawn by:
03/03/28	HES



LEFT ELEVATION

1/8" = 1'-0" WATERFRONT ELEVATION (B) SHINGLE OVER RIDGE VENTS



RIGHT ELEVATION

1/8" = 1'-0" WATERFRONT ELEVATION

WAYNE HOMES
— EST. 1973 —

Lynden

FENGBI & XUE LI
V/L GOLDENGATE AVE
ROCKY RIVER, OHIO 44116
AM #4412
CUYAHOGA CO.

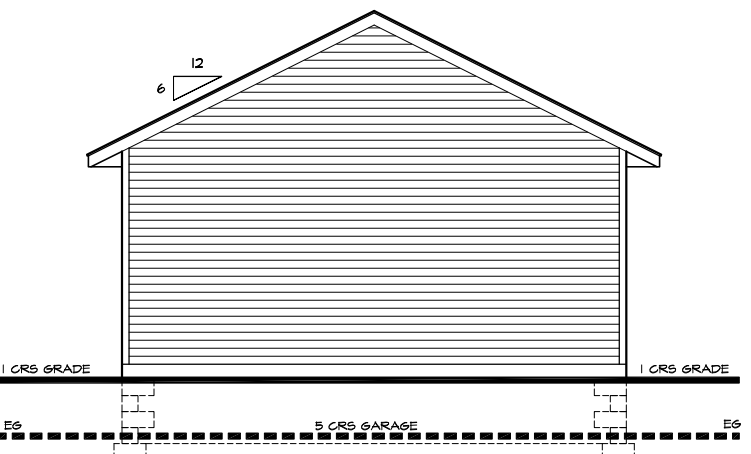
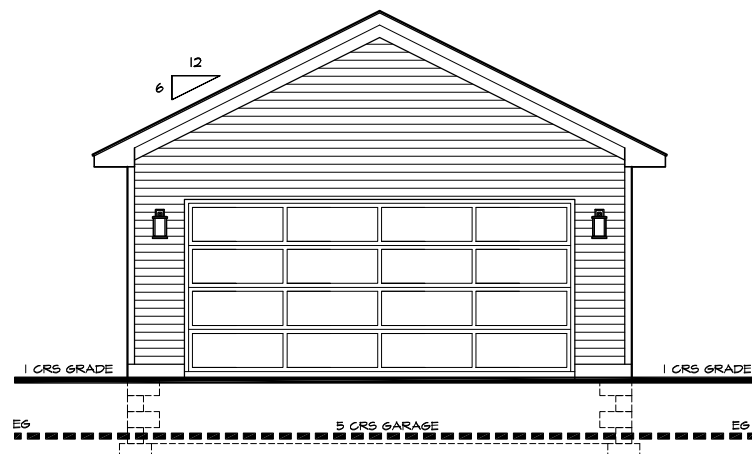
LEFT & RIGHT ELEVATIONS

Wayne Homes expressly reserves its common law copyright and other property rights in these plans. These plans are not to be reproduced, changed, or copied in any form or manner, nor are they to be assigned to a third party without first obtaining the written permission and consent of Wayne Homes. In the event of unauthorized use of these plans by a third party, the third party shall be liable for all damages, including reasonable attorney's fees, from finished product. Refer to contract for specific products selected. ©2008 Wayne Homes

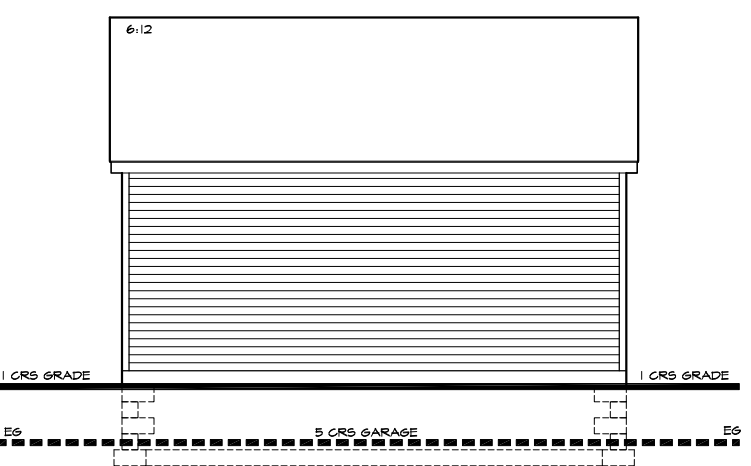
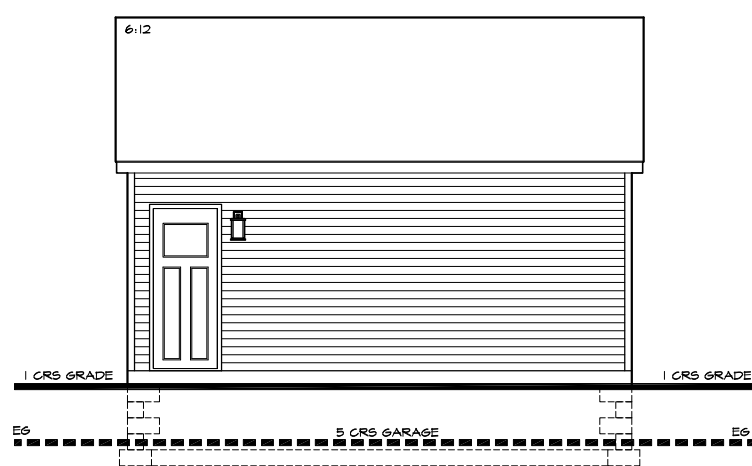
name	date
prelim:	N/A N/A
perm:	HES 09/26/25
final:	
est:	
revisions:	
date:	drawn by:
03/03/26	HES



sheet: **A7.11**



FRONT & REAR



LEFT & RIGHT SIDES

DETACHED GARAGE

1/8" = 1'-0" WATERFRONT ELEVATION

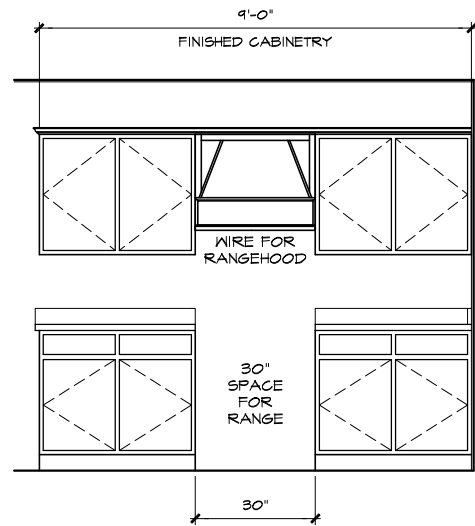
WAYNE HOMES
— EST. 1973 —

Lynden
FENGBI & XUE LI
V/L GOLDENGATE AVE
ROCKY RIVER, OHIO 44116
AM #4412
CUYAHOGA CO.

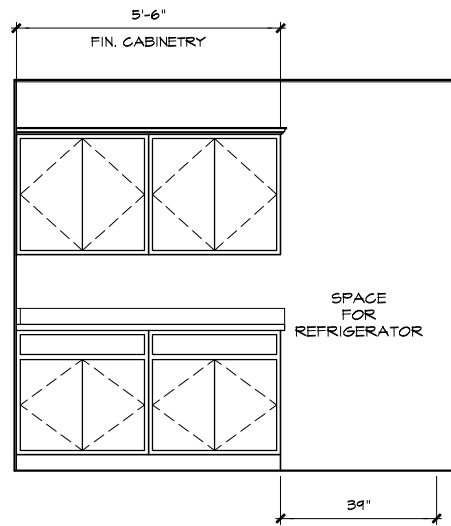
DETACHED GARAGE ELEVATIONS
Wayne Homes expressly reserves its common law copyright and other property rights in these plans. These plans are not to be reproduced, changed, or copied in any form or manner, nor are they to be assigned to a third party without first obtaining the written permission and consent of Wayne Homes. In the event of unauthorized use of these plans by a third party, the third party shall be liable for all damages, including reasonable attorney's fees, from finished product. Refer to contract for specific products selected. ©2008 Wayne Homes

name	date
prelim:	N/A
perm:	HES 09/26/25
final:	
est:	
revisions:	
date:	drawn by:
03/03/26	HES

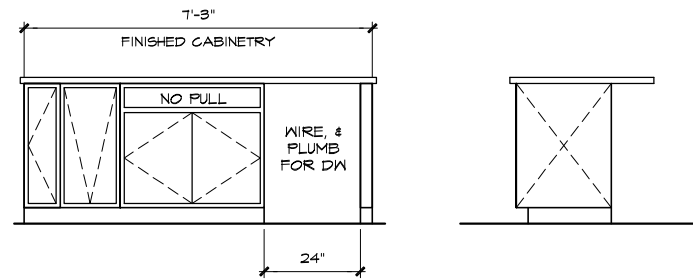
sheet: **A7.12**



A CABINET ELEVATION

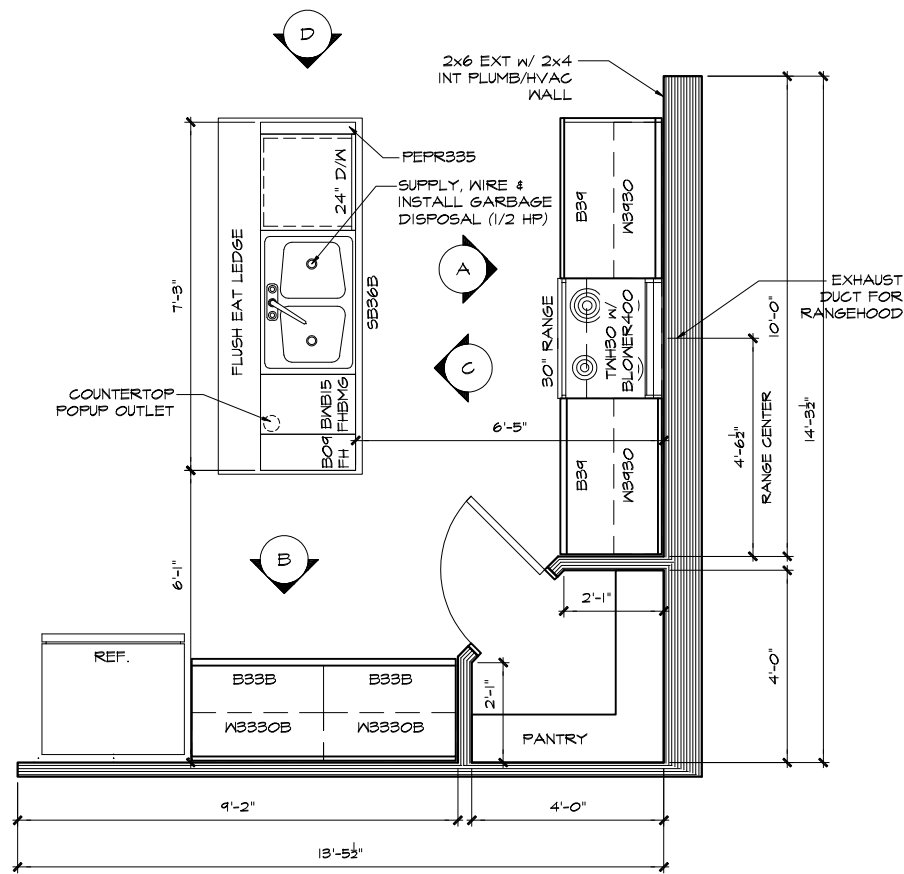


B CABINET ELEVATION



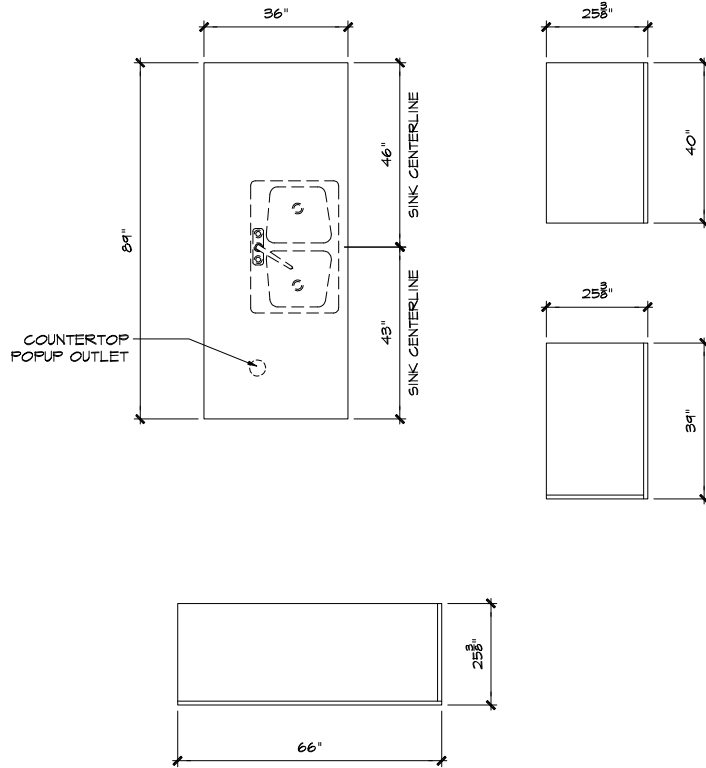
C D ISLAND ELEVATION

KNOBS/PULLS ON ALL CABINETS UNLESS OTHERWISE NOTED

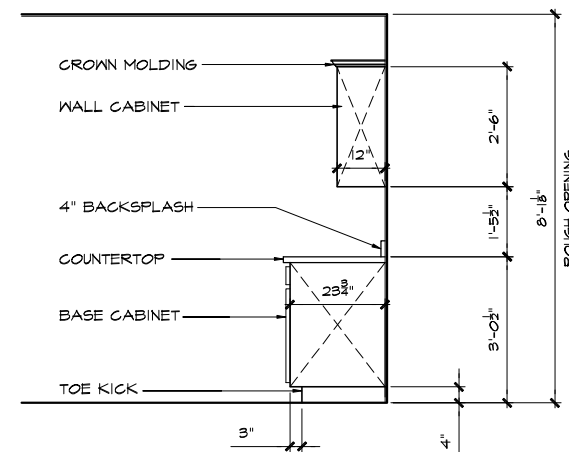


KITCHEN PLAN

SCALE: 1/4" = 1'-0"



COUNTERTOP LAYOUTS
HANSTONE QUARTZ COUNTERTOPS



CABINET SECTION

KITCHEN PLAN AND CABINETS DETAILS

Wayne Homes expressly reserves its common law copyright and other property rights in these plans. These plans are not to be reproduced, changed, or copied in any form or manner, nor are they to be assigned to a third party without first obtaining the written permission and consent of Wayne Homes. In the event of unauthorized reuse of these plans by a third party, the third party shall be liable for all damages, including attorney's fees, from finished product. Refer to contract for specific products selected. ©2008 Wayne Homes

name	date
prelim: N/A	N/A
perm: HES	09/26/25
final:	
est:	
revisions:	
date: 03/03/28	drawn by: HES

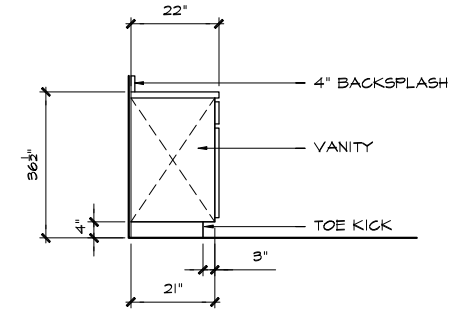
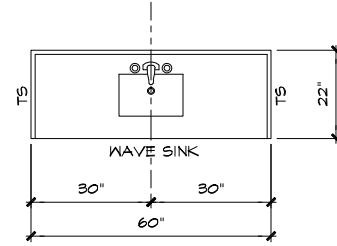
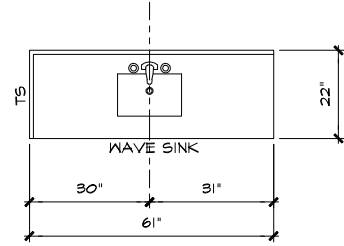
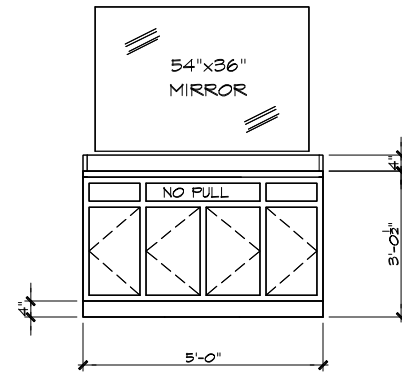
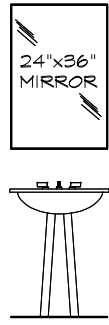
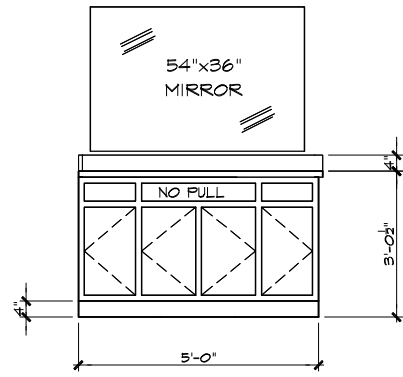


sheet: A8.10

Lynden

FENGBI & XUE LI
V/L GOLDENGATE AVE
ROCKY RIVER, OHIO 44116
AM #4412
CUYAHOGA CO.

WAYNE HOMES
EST. 1973



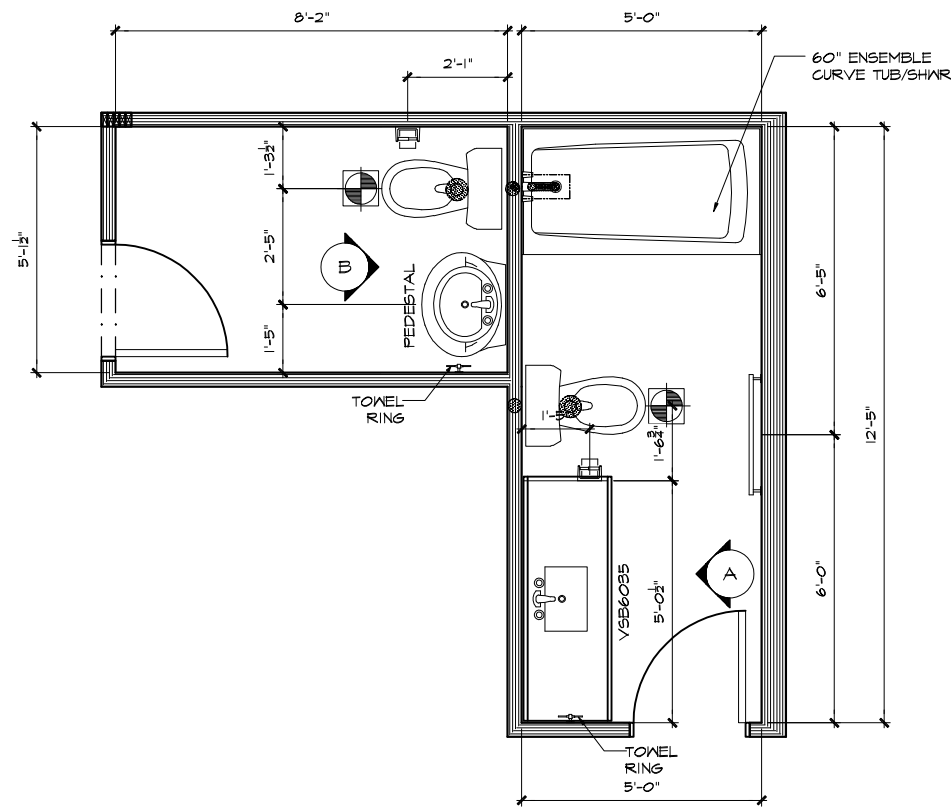
A OWNER BATH

B HALF BATH

C MAIN BATH

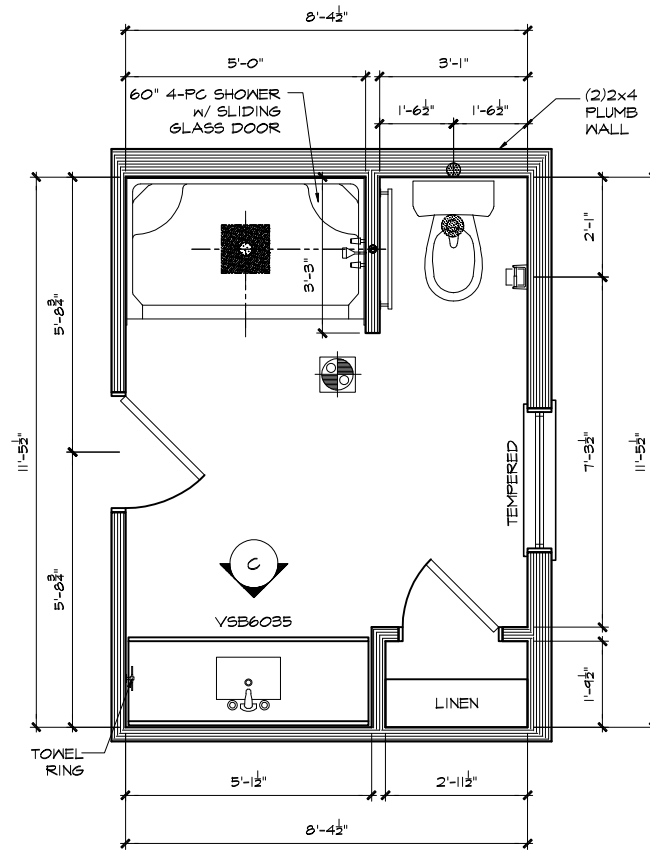
CABINET SECTION

PULLS AT ALL CABINETS
UNLESS NOTED OTHERWISE



OWNER &
HALF BATH

SCALE: 1/4" = 1'-0"



MAIN BATH

SCALE: 1/4" = 1'-0"

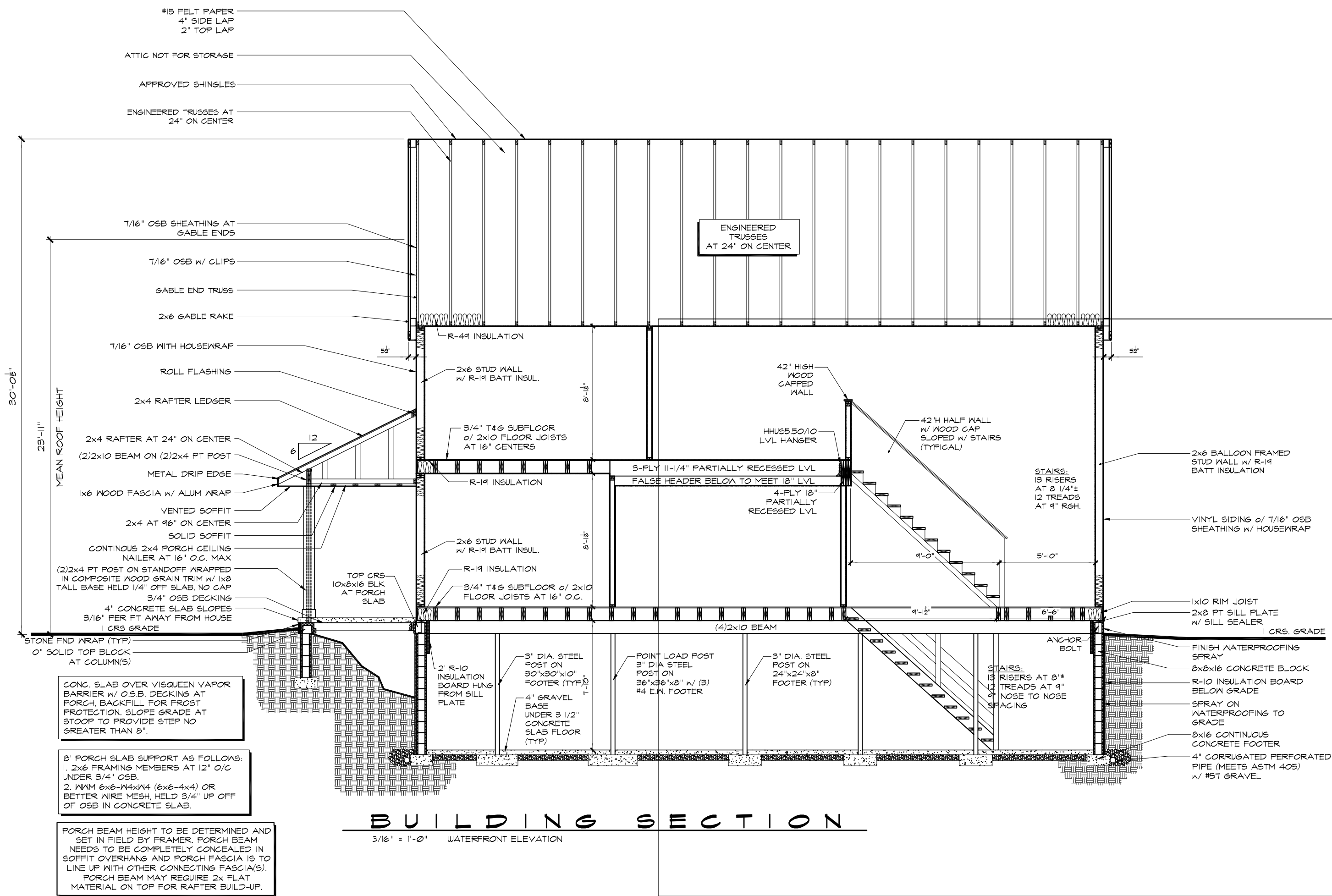
Wayne Homes expressly reserves its common law copyright and other property rights in these plans. These plans are not to be reproduced, changed, or copied in any form or manner, nor are they to be assigned to a third party without first obtaining the written permission and consent of Wayne Homes. In the event of unauthorized reuse of these plans by a third party, the third party shall be liable for all damages, including reasonable attorneys' fees, from finished product. Refer to contract for specific products selected. ©2008 Wayne Homes

name	date
prelim: N/A	N/A
perm: HES	09/26/25
final:	
est:	
revisions:	
date: 03/03/26	drawn by: HES



Wayne Homes expressly reserves its common law copyright and other property rights in these plans. These plans are not to be reproduced, changed, or copied in any form or manner, nor are they to be assigned to a third party without first obtaining the written permission and consent of Wayne Homes. In the event of unauthorized reuse of these plans by a third party, the third party shall be liable for all damages, including reasonable attorney's fees, from finished product. Refer to contract for specific products selected. ©2008 Wayne Homes

name	date
prelim: N/A	N/A
perm: HES	09/26/25
final:	
est:	
revisions:	
date:	drawn by:
03/03/28	HES



BUILDING SECTION

3/16" = 1'-0" WATERFRONT ELEVATION

#15 FELT PAPER
4" SIDE LAP
2" TOP LAP

ATTIC NOT FOR STORAGE

APPROVED SHINGLES

ENGINEERED TRUSSES AT
24" ON CENTER

ENGINEERED
TRUSSES
AT 24" ON CENTER

7/16" OSB SHEATHING AT
GABLE ENDS

7/16" OSB w/ CLIPS

GABLE END TRUSS

2x6 GABLE RAKE

7/16" OSB WITH HOUSEWRAP

ROLL FLASHING

2x4 RAFTER LEDGER

2x4 RAFTER AT 24" ON CENTER

(2)2x10 BEAM ON (2)2x4 PT POST

METAL DRIP EDGE

1x6 WOOD FASCIA w/ ALUM WRAP

VENTED SOFFIT

2x4 AT 96" ON CENTER

SOLID SOFFIT

CONTINUOUS 2x4 PORCH CEILING

NAILER AT 16" O.C. MAX

(2)2x4 PT POST ON STANDOFF WRAPPED

IN COMPOSITE WOOD GRAIN TRIM w/ 1x8

TALL BASE HELD 1/4" OFF SLAB, NO CAP

3/4" OSB DECKING

4" CONCRETE SLAB SLOPES

3/16" PER FT AWAY FROM HOUSE

1 CRS GRADE

STONE FND WRAP (TYP)

10" SOLID TOP BLOCK

AT COLUMN(S)

CONC. SLAB OVER VISQUEEN VAPOR BARRIER w/ O.S.B. DECKING AT PORCH, BACKFILL FOR FROST PROTECTION. SLOPE GRADE AT STOOP TO PROVIDE STEP NO GREATER THAN 8".

8' PORCH SLAB SUPPORT AS FOLLOWS:
1. 2x6 FRAMING MEMBERS AT 12" O/C UNDER 3/4" OSB.
2. W/M 6x6-W4xW4 (6x6-4x4) OR BETTER WIRE MESH, HELD 3/4" UP OFF OF OSB IN CONCRETE SLAB.

PORCH BEAM HEIGHT TO BE DETERMINED AND SET IN FIELD BY FRAMER. PORCH BEAM NEEDS TO BE COMPLETELY CONCEALED IN SOFFIT OVERHANG AND PORCH FASCIA IS TO LINE UP WITH OTHER CONNECTING FASCIA(S). PORCH BEAM MAY REQUIRE 2x FLAT MATERIAL ON TOP FOR RAFTER BUILD-UP.

5 1/2"

5 1/2"

5 1/2"

12

6

12

12

12

12

12

12

12

12

12

12

12

12

12

12

12

12

12

12

12

12

12

12

12

12

12

12

12

12

12

12

12

12

12

12

12

12

12

12

12

12

12

12

12

12

12

12

12

12

12

12

12

12

12

12

12

12

12

12

12

12

12

12

12

12

12

12

12

12

12

12

12

12

12

12

12

12

12

12

12

12

12

12

12

12

12

12

12

12

12

12

12

12

12

12

12

12

12

12

12

12

12

12

12

12

12

12

12

12

12

12

12

12

12

12

12

12

12

12

12

12

12

12

12

12

12

12

12

12

12

12

12

12

12

12

12

12

12

12

12

12

12

12

12

12

12

12

12

12

12

12

12

12

12

12

12

12

12

12

12

12

12

12

12

12

12

12

12

12

12

12

12

12

12

12

12

12

12

12

12

12

12

12

12

12

12

12

12

12

12

12

12

12

12

12

12

12

12

12

12

12

12

12

12

12

12

12

12

12

12

12

12

12

12

12

12

12

12

12

12

12

12

12

12

12

12

12

12

12