

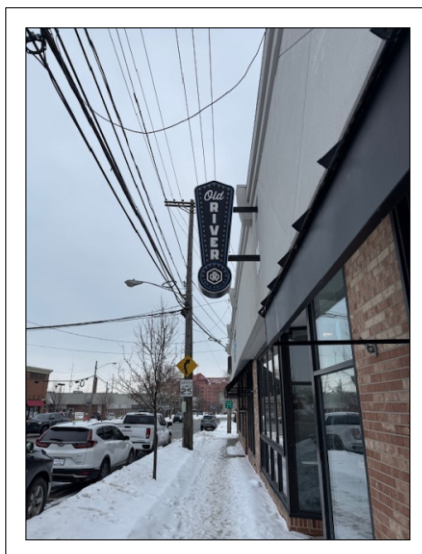
Option 1

SIGN #1

Remove and dispose of existing blade sign
Mfg. and install a new illuminated sign
Single face wall sign with flat white
face and black vinyl graphics
Black retainer/cabinet



Existing



Date **04.13.26**

Scale **1/2" = 1' - 0"**

Drawing # **1 of 2**

Filename
SiblingRevelry07_020426

Sales
Tricia

Drawn
JP

Work Order
MO-

This drawing has been reviewed and is:

- APPROVED AS SUBMITTED
- APPROVED AS NOTED
- NOT APPROVED REVISE AND RESUBMIT

Representative Signature

Date

These drawings, specifications or plans are the property of The Wagner Electric Sign Company as a direct result of original work performed by its employee(s). They are being submitted to you, or the organization that you directly represent for the sole purpose for you or your organizations consideration as to whether or not there is intent to purchase products or services from The Wagner Electric Sign Company as shown within these plans. **Unauthorized distribution or circulation of such plans without the express, written consent of The Wagner Electric Sign Company is expressly forbidden.** In the event that such exhibition occurs, or other use of such plans or designs to secure goods or materials from other sources will result in costs and fees due to The Wagner Electric Sign Company for such design services rendered. Such use will constitute acceptance of design services performed. The fee for a standard sign valued at up to \$20,000 shall be \$1,000. The fee for standard sign valued over \$20,000 shall be a minimum of \$5,000 based on design time vested and/or uniqueness of the design and the time spent preparing such designs. In addition to any and all legal expenses to collect such.

NOTE:
This layout was prepared for printing on Tabloid or 11"x17" stock. Reproducing this on media other than size stated above, will distort and no longer be to scale. Colors are for representation purposes and are not intended to match the final product color. See PMS® note.

All products requiring electrical and built or provided by The Wagner Electric Sign Company shall bear the mark below. Reprinted from the Online Certifications Directory with permission from Underwriters Laboratories Inc. Copyright © 2026 Underwriters Laboratories Inc.®

THIS PRODUCT IS LISTED BY UNDERWRITERS LABORATORIES INC. AND BEARS THE MARK



Wagner Electric Sign Co. © 2026

1/4" = 1' - 0"

SIGN #2

Mfg. and install a single face non-illuminated wall sign
Flat white aluminum panel with black vinyl graphics



Existing



Date **04.13.26**

Scale **1/2" = 1' - 0"**

Drawing # **2 of 2**

Filename
SiblingRevelry07_020426

Sales
Tricia

Drawn
JP

Work Order
MO-

This drawing has been reviewed and is:

- APPROVED AS SUBMITTED
- APPROVED AS NOTED
- NOT APPROVED REVISE AND RESUBMIT

Representative Signature

Date

These drawings, specifications or plans are the property of The Wagner Electric Sign Company as a direct result of original work performed by its employee(s). They are being submitted to you, or the organization that you directly represent for the sole purpose for you or your organizations consideration as to whether or not there is intent to purchase products or services from The Wagner Electric Sign Company as shown within these plans. Unauthorized distribution or circulation of such plans without the express, written consent of The Wagner Electric Sign Company is expressly forbidden. In the event that such exhibition occurs, or other use of such plans or designs to secure goods or materials from other sources will result in costs and fees due to The Wagner Electric Sign Company for such design services rendered. Such use will constitute acceptance of design services performed. The fee for a standard sign valued at up to \$20,000 shall be \$1,000. The fee for standard sign valued over \$20,000 shall be a minimum of \$5,000 based on design time vested and/or uniqueness of the design and the time spent preparing such designs. In addition to any and all legal expenses to collect such.

NOTE:
This layout was prepared for printing on Tabloid or 11"x17" stock. Reproducing this on media other than size stated above, will distort and no longer be to scale. Colors are for representation purposes and are not intended to match the final product color. See PMS® note.

All products requiring electrical and built or provided by The Wagner Electric Sign Company shall bear the mark below. Reprinted from the Online Certifications Directory with permission from Underwriters Laboratories Inc. Copyright © 2026 Underwriters Laboratories Inc.®

THIS PRODUCT IS LISTED BY UNDERWRITERS LABORATORIES INC. AND BEARS THE MARK