

RUFFING MONTESSORI

PROPOSED SECURED ENTRY ADDITION

1285 Orchard Park Drive ~ Rocky River, Ohio 44116



PROPOSED SECURED ENTRY ADDITION WEST EXPOSURE



BIRDSEYE VIEW OF EXISTING



EXISTING CONDITION

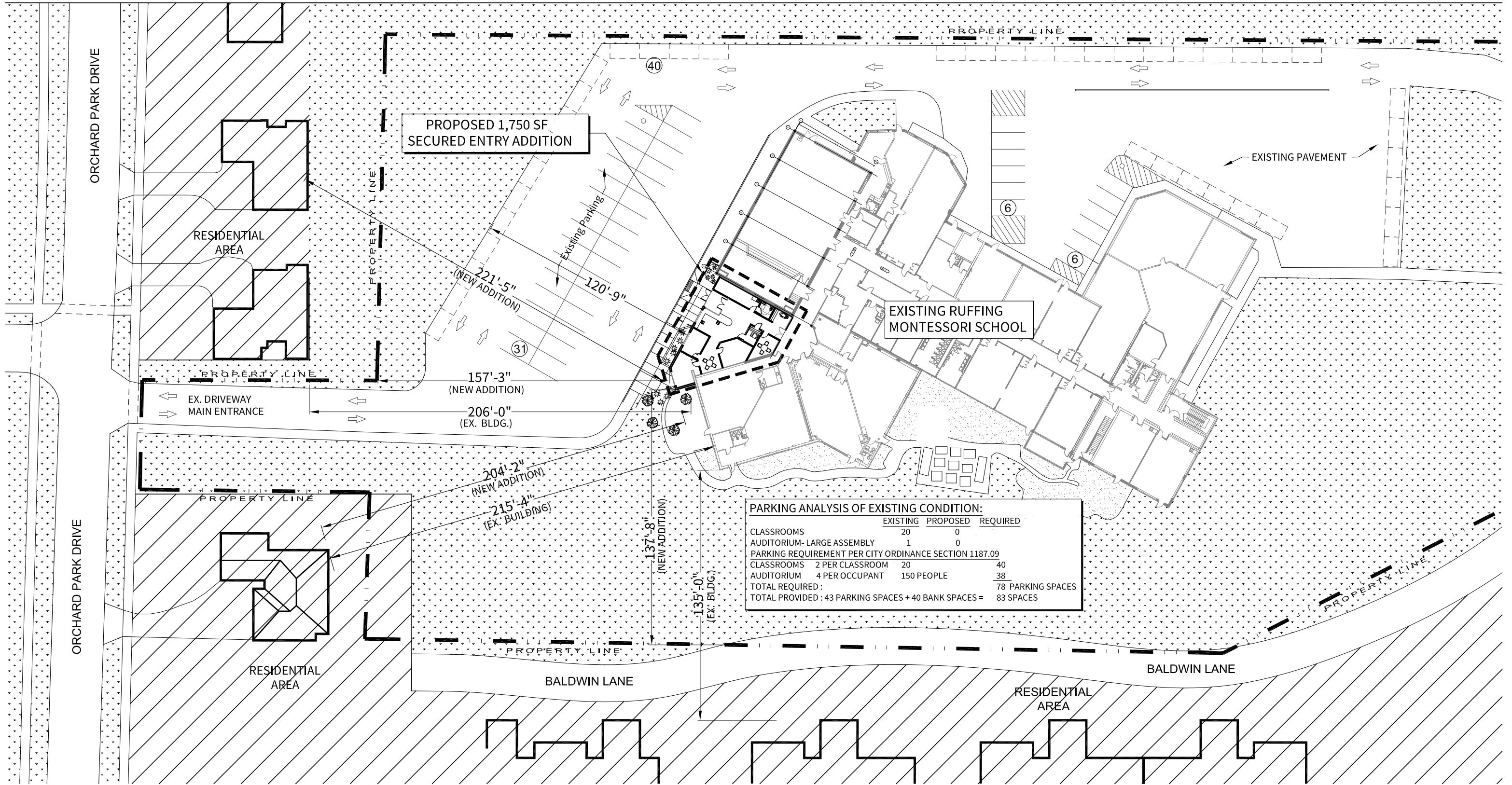


Ruffing Montessori – Secured Entry Expansion

1285 Orchard Park Drive,
Rocky River, Ohio 44116



BIRDSEYE VIEW SITE PLAN

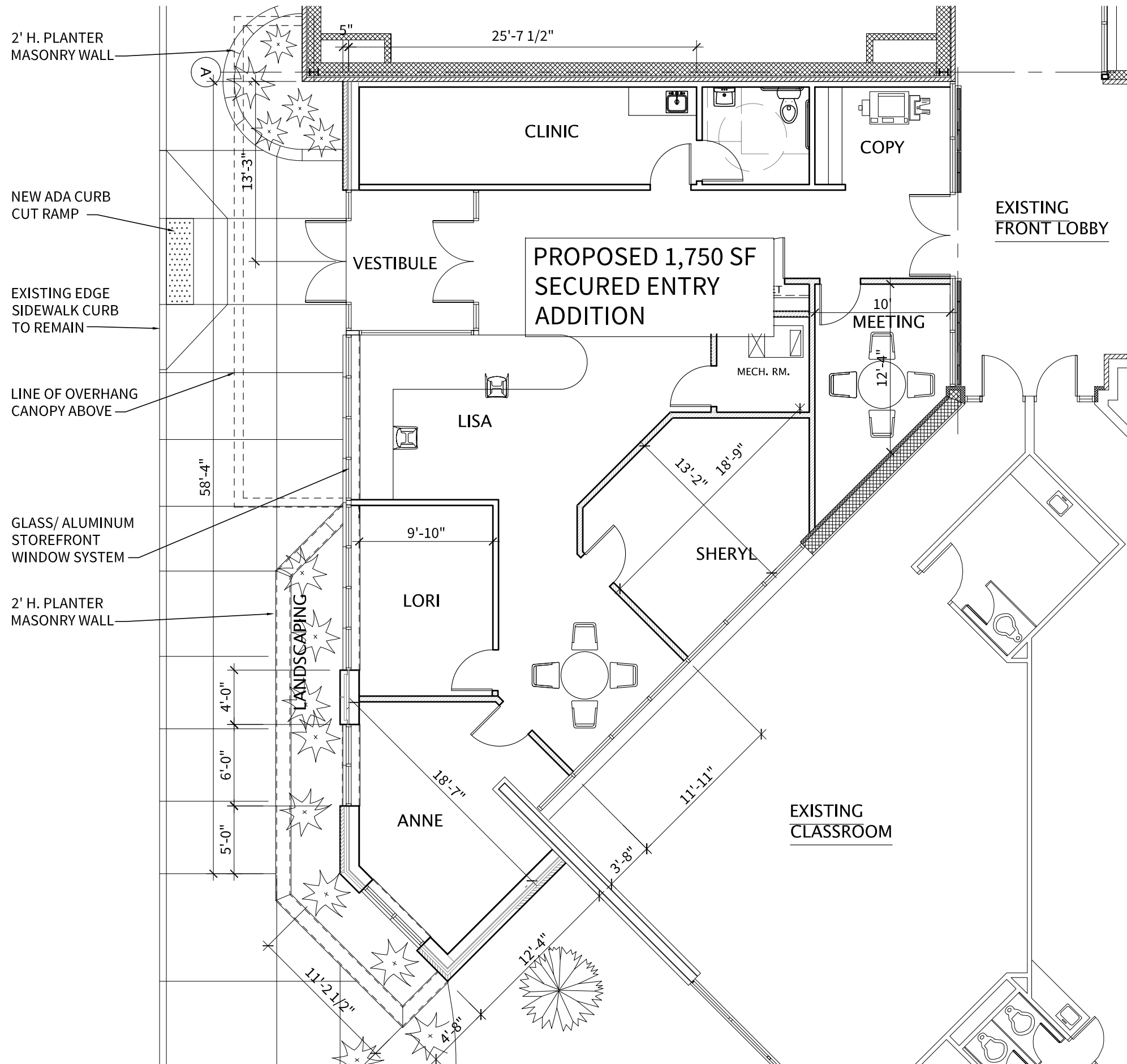


Ruffing Montessori – Secured Entry Expansion

1285 Orchard Park Drive,
Rocky River, Ohio 44116



SITE PLAN

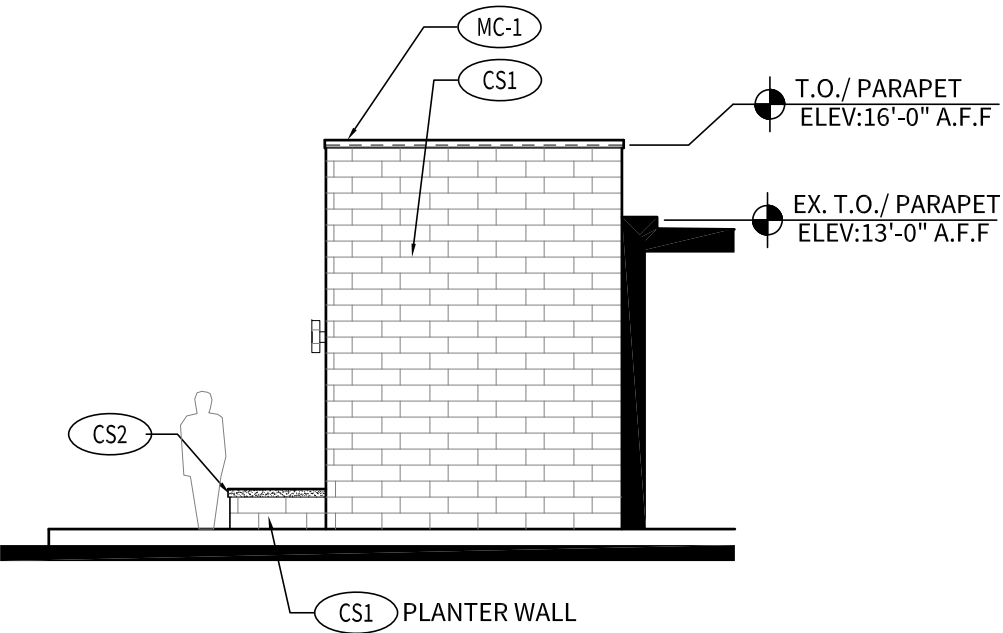


Ruffing Montessori – Secured Entry Expansion

1285 Orchard Park Drive,
Rocky River, Ohio 44116

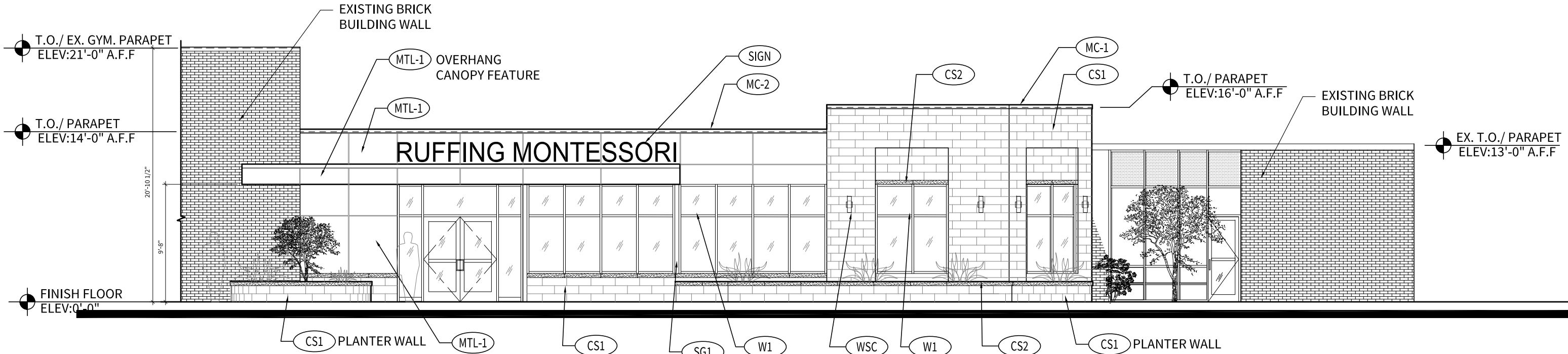
PROPOSED FLOOR PLAN

Scale: 1/8" = 1'-0"



PROPOSED SOUTH ELEVATION
SCALE: 1/8" = 1'-0"

MATERIAL SCHEDULE		
TAG	DESCRIPTION	SPECIFICATION
BRK	EXISTING 4" FACE BRICK VENEER BUILDING WALL	
CS1	SMOOTH-FACE CAST STONE UNIT	12x24 PRE-CAST STONE SMOOTH FACE BLOCK BY 'CUSTOM CAST STONE-COLOR NATURAL (BUFF GRAY)
CS2	ROCK-FACE CAST STONE UNIT	4x24 PRE-CAST STONE ROCK-FACE TRIM BY 'CUSTOM CAST STONE-COLOR NATURAL (BUFF GRAY)
W-1	ALUMINUM STOREFRONT WINDOW	PR-FINISHED ANODIZED ALUMINUM STOREFRONT WINDOW SYSTEM BY 'KAWNEER' TRIFAB VG 451T WITH 1" INSULATED FRONT SET LOW-E TINTED GLAZING.
MTL-1	PRE-FINISHED ALUMINUM METAL COMPOSITE	1 1/2" PRE-FINISHED ALUMINUM METAL COMPOSITE WET JOINT SYSTEM COLOR 'ANODIZED ALUMINUM'
SG-1	SPANDREL GLASS	1" INSULATED SPANDREL GLASS COLOR MEDIUM GRAY
MC-1	GRAVEL STOP/ COPING	'DMI' SNAP-ON COPING WITH DRIP EDGE COLOR 'STONE'.
MC-2	GRAVEL STOP/ COPING	'DMI' SNAP-ON COPING WITH DRIP EDGE COLOR 'METALLIC SILVER'.
WSC	WALL SCNCE LIGHT FIXTURE	SURFACE MOUNTED SCNCE LIGHT FIXTURE- COLOR SILVER ALUMINUM (UP&DN. LIGHTING)
SIGN	INDIVIDUAL LETTER SIGN	INTERNALLY ILLUMINATED LED INDIVIDUAL LETTER SIGN- COLOR SILVER.



PROPOSED WEST ELEVATION
SCALE: 1/8" = 1'-0"

Ruffing Montessori – Secured Entry Expansion

1285 Orchard Park Drive,
Rocky River, Ohio 44116

PROPOSED WEST ELEVATIONS

Scale: 1/8" = 1'-0"