

RUFFING MONTESSORI

PROPOSED SECURED ENTRY ADDITION

1285 Orchard Park Drive Rocky River, Ohio 44116



03/05/2024

HSB

ARCHITECTS
+ ENGINEERS



THE KRUEGER GROUP
BUILD WITH A PARTNER





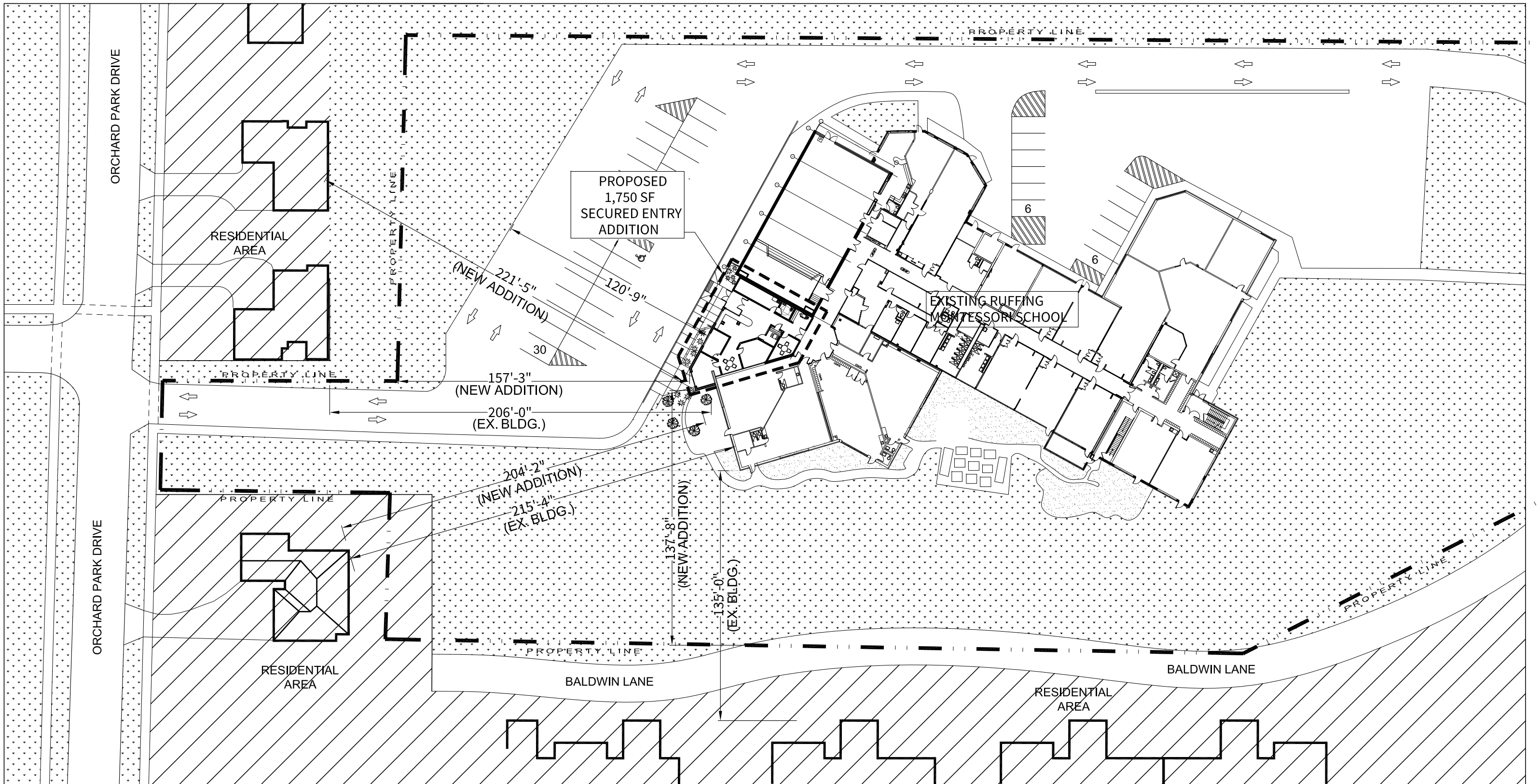
EXISTING ENTRY



BIRDSEYE VIEW OF EXISTING



ENLARGED ENTRY PHOTO



2' H. PLANTER
MASONRY WALL

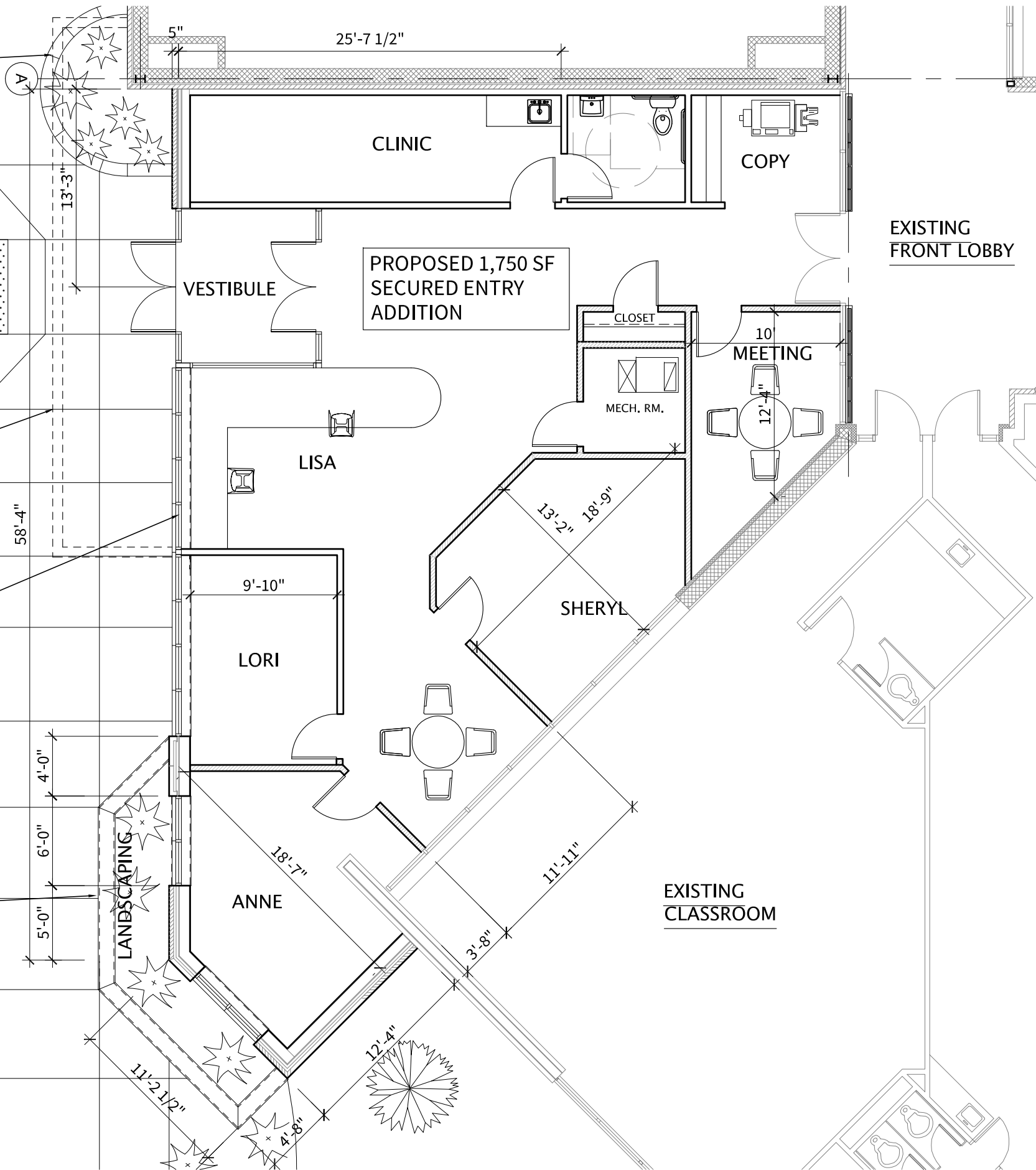
NEW ADA CURB
CUT RAMP

EXISTING EDGE
SIDEWALK CURB
TO REMAIN

LINE OF OVERHANG
CANOPY ABOVE

GLASS/ ALUMINUM
STOREFRONT
WINDOW SYSTEM

2' H. PLANTER
MASONRY WALL



Ruffing Montessori – Secured Entry Expansion

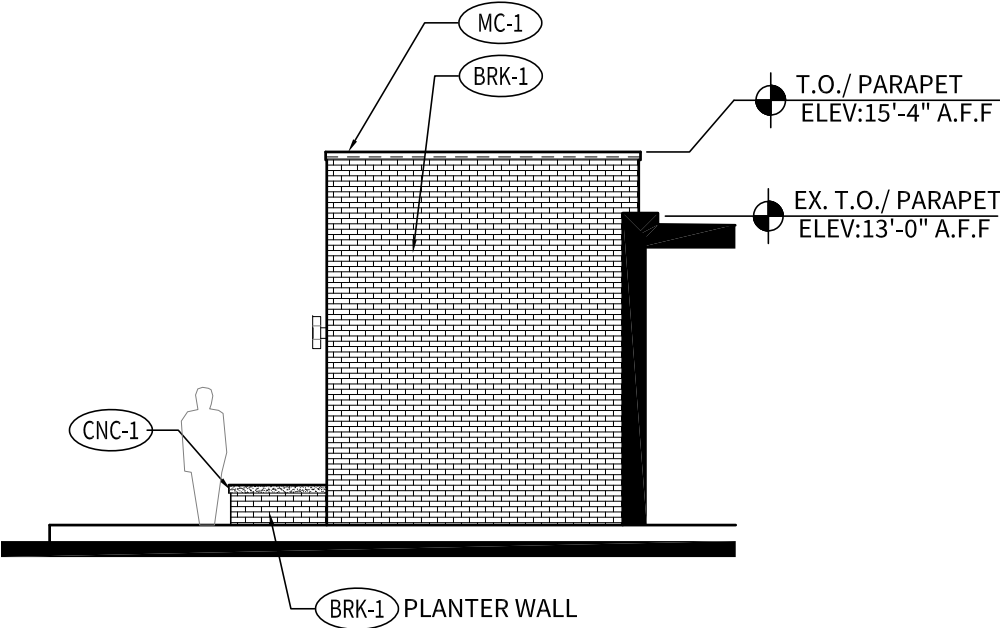


PROPOSED FLOOR PLAN

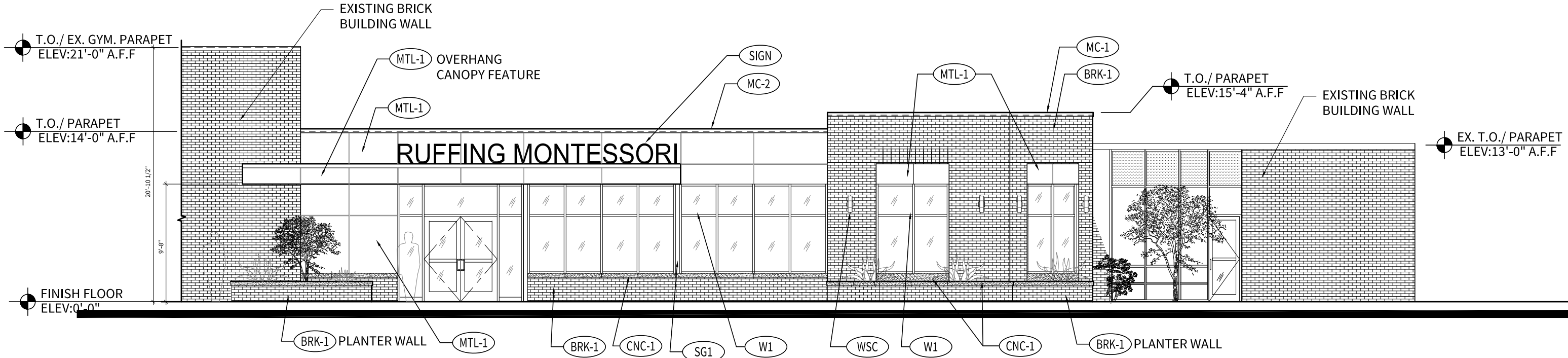
Scale: 1/8" = 1'-0"

MATERIAL SCHEDULE

TAG	DESCRIPTION	SPECIFICATION
BRK-1	4" FACE BRICK VENEER TO MATCH EXISTING	
CNC-1	PRECAST, CONCRETE CAP/SILL	
W-1	ALUMINUM STOREFRONT WINDOW	PR-FINISHED ANODIZED ALUMINUM STOREFRONT WINDOW SYSTEM BY 'KAWNEER' TRIFAB VG 451T WITH 1" INSULATED FRONT SET LOW-E TINTED GLAZING.
MTL-1	PRE-FINISHED ALUMINUM METAL COMPOSITE	1 1/2" PRE-FINISHED ALUMINUM METAL COMPOSITE WET JOINT SYSTEM COLOR 'ANODIZED ALUMINUM'
SG-1	SPANDREL GLASS	1" INSULATED SPANDREL GLASS COLOR MEDIUM GRAY
MC-1	GRAVEL STOP/ COPING	'DMI' SNAP-ON COPING WITH DRIP EDGE COLOR 'STONE'.
MC-2	GRAVEL STOP/ COPING	'DMI' SNAP-ON COPING WITH DRIP EDGE COLOR 'METALLIC SILVER'.
WSC	WALL SCONCE LIGHT FIXTURE	SURFACE MOUNTED SCONCE LIGHT FIXTURE- COLOR SILVER ALUMINUM (UP& DN. LIGHTING)
SIGN	INDIVIDUAL LETTER SIGN	22" HIGH, NON- ILLUMINATED, INDIVIDUAL, ALUMINUM CHANNEL LETTERS WITH CLEAR, ANODIZED ALUMINUM RETURN AND WHITE ACRYLIC FACE, MOUNTED DIRECTLY TO CANOPY PARAPET



PROPOSED SOUTH ELEVATION
SCALE: 1/8" = 1'-0"



PROPOSED WEST ELEVATION
SCALE: 1/8" = 1'-0"