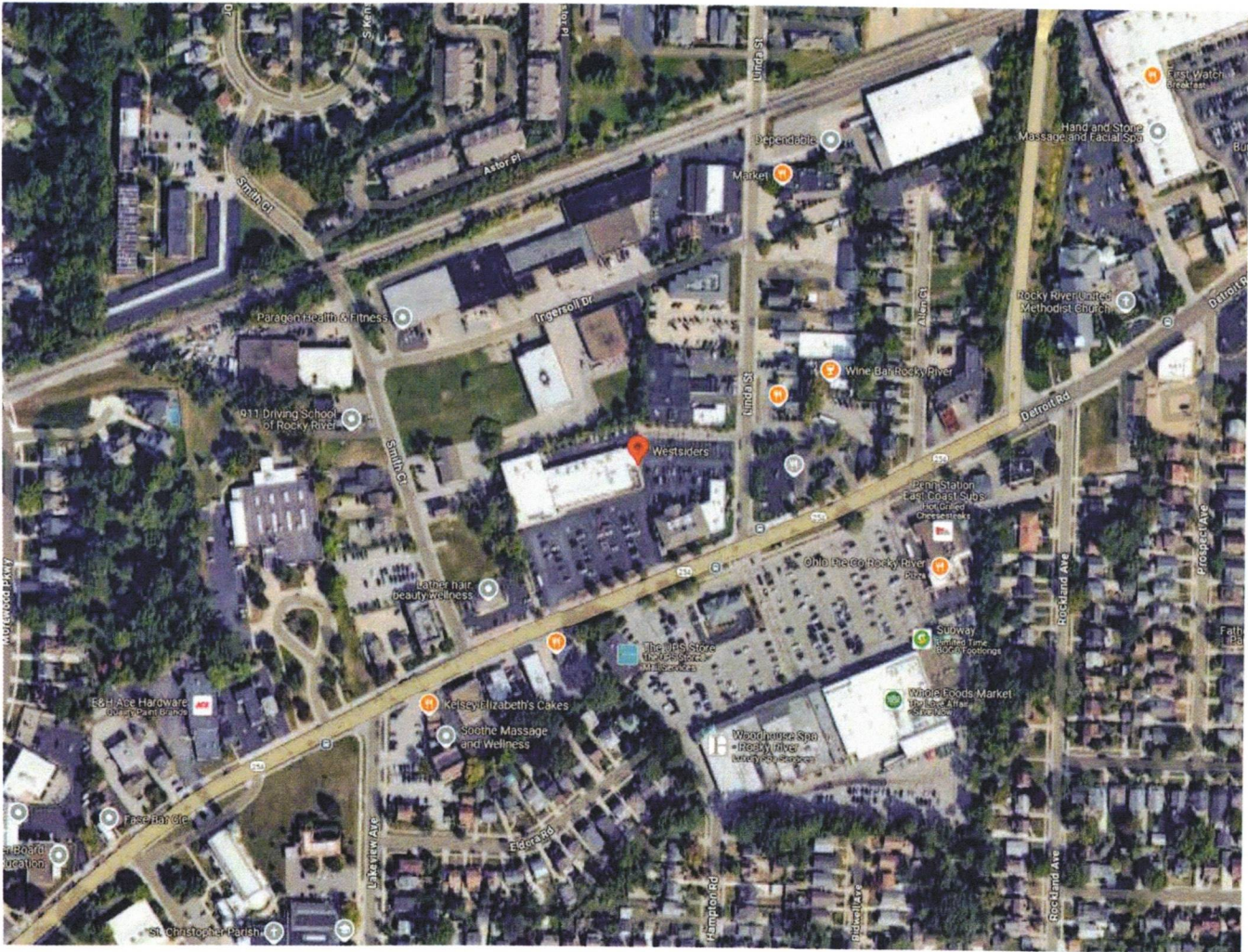


WESTSIDERS BAR & RESTAURANT



SCOPE OF PROJECT

- i. Channel letters w/ neon on backer panel for EAST elevation
- ii. Channel letters w/ neon on backer panel for SOUTH elevation



COLORS

- SW 6994 Greenblack
- MP20504 Saturn Gold Metallic
- MP08514 Enzo Red
- Ruby Red

***ALL MEASUREMENTS & MATERIALS ARE APPROXIMATE FOR PURPOSES OF VISUALIZATION, AND ARE SUBJECT TO CHANGE IF NECESSARY.**

These drawings are the exclusive property of Ellen Benjamin. They represent chargeable time spent. They are submitted for your personal use under the agreement that the use of this design in its entirety or any part will not be reproduced, copied, lent or used for any purpose without written consent from Ellen Benjamin.

WESTSIDERS BAR & RESTAURANT
19880 DETROIT RD, ROCKY RIVER, OH 44116

VERSIONS
V1: 02/10/25

DATE
02/10/25

PROJECT MANAGER
ANNA A.

PAGE DESCRIPTION
OVERVIEW

PAGE NO.
1 OF 9

i. OVERVIEW Channel letters w/ neon on backer panel for EAST elevation

EAST ELEVATION
FRONT VIEW



MATERIALS

A. "Westsiders" channel letters

RETURNS: 5" .040 aluminum, painted MP20504 Saturn Gold Metallic (exterior) & MP08514 Enzo Red (interior) w/ false baffles for neon glass

BACKS: .063 aluminum

FACES: 3/16" clear acrylic

TRIM: 1" painted MP20504 Saturn Gold Metallic

GLASS: 13mm Ruby Red

ELECTRICAL: 30ma outdoor transformer(s) in backer panel; Disconnect switch & drain holes

MOUNTING: Flush stud mount to backer panel

B. "BAR & RESTAURANT" capsule

RETURNS: 5" .040 aluminum, painted SW 6994 Greenblack (interior & exterior) w/ false baffles for neon glass

BACK: .063 aluminum

FACE: 3/16" clear acrylic

TRIM: 1" painted SW 6994 Greenblack

GLASS: 13mm Ruby Red

ELECTRICAL: 30ma outdoor transformer(s) in backer panel; Disconnect switch & drain holes

MOUNTING: Flush stud mount to backer panel

C. Backer panel

BODY: 3" deep aluminum frame fabrication, skinned w/ aluminum, painted SW 6994 Greenblack

MOUNTING: Bolted flush to existing rail structure on roof

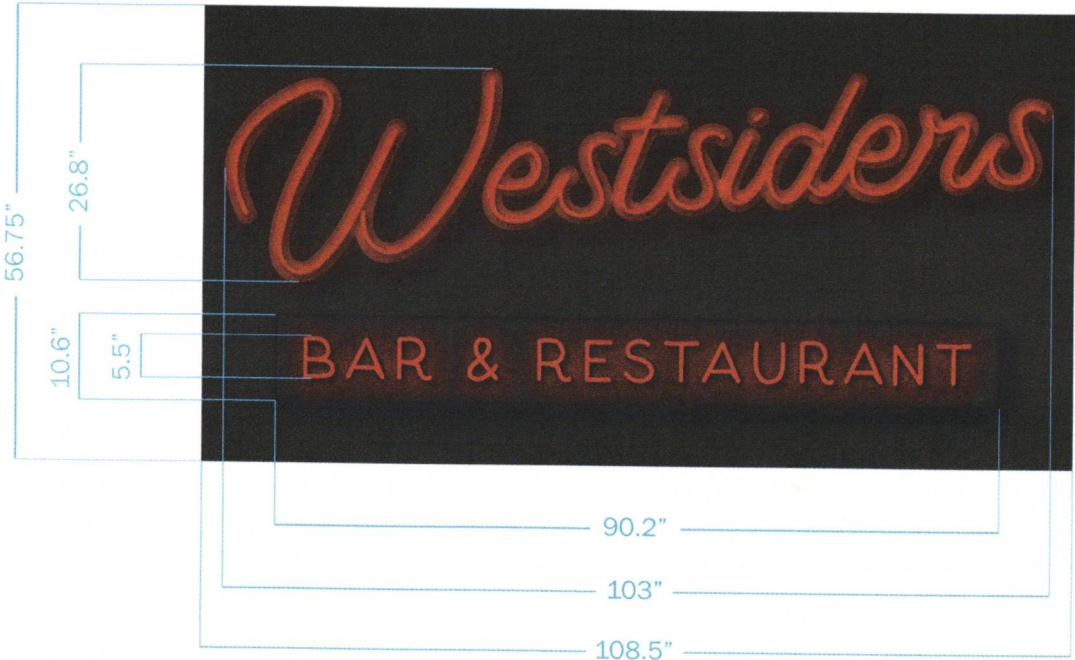
COLORS

SW 6994 Greenblack

MP08514 Enzo Red

MP20504 Saturn Gold Met.

Ruby Red



***ALL MEASUREMENTS & MATERIALS ARE APPROXIMATE FOR PURPOSES OF VISUALIZATION, AND ARE SUBJECT TO CHANGE IF NECESSARY.**

These drawings are the exclusive property of Ellen Benjamin. They represent chargeable time spent. They are submitted for your personal use under the agreement that the use of this design in its entirety or any part will not be reproduced, copied, lent or used for any purpose without written consent from Ellen Benjamin.

WESTSIDERS BAR & RESTAURANT
19880 DETROIT RD, ROCKY RIVER, OH 44116

OVERALL DIMENSIONS 9' - 0.5" W x 4' - 8.75" H x 8" D

SQUARE FOOTAGE 42.8 ft.²

SCALE

1 : 15

DATE

02/10/25

PROJECT MANAGER

ANNA A.

PAGE DESCRIPTION

EAST ELEVATION
FRONT VIEW

PAGE NO.

2 OF 9

i. OVERVIEW Channel letters w/ neon on backer panel for EAST elevation

EAST ELEVATION
SIDE VIEWS



MATERIALS

A. "Westsidiers" channel letters

RETURNS: 5" .040 aluminum, painted MP20504 Saturn Gold Metallic (exterior) & MP08514 Enzo Red (interior) w/ false baffles for neon glass

BACKS: .063 aluminum

FACES: 3/16" clear acrylic

TRIM: 1" painted MP20504 Saturn Gold Metallic

GLASS: 13mm Ruby Red

ELECTRICAL: 30ma outdoor transformer(s) in backer panel; Disconnect switch & drain holes

MOUNTING: Flush stud mount to backer panel

B. "BAR & RESTAURANT" capsule

RETURNS: 5" .040 aluminum, painted SW 6994 Greenblack (interior & exterior) w/ false baffles for neon glass

BACK: .063 aluminum

FACE: 3/16" clear acrylic

TRIM: 1" painted SW 6994 Greenblack

GLASS: 13mm Ruby Red

ELECTRICAL: 30ma outdoor transformer(s) in backer panel; Disconnect switch & drain holes

MOUNTING: Flush stud mount to backer panel

C. Backer panel

BODY: 3" deep aluminum frame fabrication, skinned w/ aluminum, painted SW 6994 Greenblack

MOUNTING: Bolted flush to existing rail structure on roof

COLORS

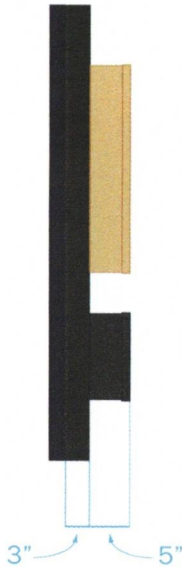
SW 6994
Greenblack

MP20504
Saturn Gold Met.

MP08514
Enzo Red

Ruby Red

DIRECT SIDE VIEW



ORTHOGRAPHIC VIEW



*ALL MEASUREMENTS & MATERIALS ARE APPROXIMATE FOR PURPOSES OF
VISUALIZATION, AND ARE SUBJECT TO CHANGE IF NECESSARY.

These drawings are the exclusive property of Ellen Benjamin. They represent chargeable time spent. They are submitted for your personal use under the agreement that the use of this design in its entirety or any part will not be reproduced, copied, lent or used for any purpose without written consent from Ellen Benjamin.

WESTSIDERS BAR & RESTAURANT
19880 DETROIT RD, ROCKY RIVER, OH 44116

OVERALL DIMENSIONS 9' - 0.5" W x 4' - 8.75" H x 8" D

SQUARE FOOTAGE 42.8 ft.²

SCALE

1 : 15

DATE

02/10/25

PROJECT MANAGER

ANNA A.

PAGE DESCRIPTION
EAST ELEVATION
SIDE VIEWS

PAGE NO.

3 OF 9

i. OVERVIEW Channel letters w/ neon on backer panel for EAST elevation

EAST ELEVATION - MOCK-UP ON SITE - DAY



*ALL MEASUREMENTS & MATERIALS ARE APPROXIMATE FOR PURPOSES OF VISUALIZATION, AND ARE SUBJECT TO CHANGE IF NECESSARY.

These drawings are the exclusive property of Ellen Benjamin. They represent chargeable time spent. They are submitted for your personal use under the agreement that the use of this design in its entirety or any part will not be reproduced, copied, lent or used for any purpose without written consent from Ellen Benjamin.

WESTSIDERS BAR & RESTAURANT
19880 DETROIT RD, ROCKY RIVER, OH 44116

OVERALL DIMENSIONS 9' - 0.5" W x 4' - 8.75" H x 8" D

SQUARE FOOTAGE 42.8 ft.²

SCALE
AS NOTED

DATE
02/10/25

PROJECT MANAGER
ANNA A.

PAGE DESCRIPTION
EAST ELEVATION
MOCK-UP ON SITE - DAY

PAGE NO.
4 OF 9

i. OVERVIEW Channel letters w/ neon on backer panel for EAST elevation

EAST ELEVATION - MOCK-UP ON SITE - NIGHT



*ALL MEASUREMENTS & MATERIALS ARE APPROXIMATE FOR PURPOSES OF VISUALIZATION, AND ARE SUBJECT TO CHANGE IF NECESSARY.

These drawings are the exclusive property of Ellen Benjamin. They represent chargeable time spent. They are submitted for your personal use under the agreement that the use of this design in its entirety or any part will not be reproduced, copied, lent or used for any purpose without written consent from Ellen Benjamin.

WESTSIDERS BAR & RESTAURANT
19880 DETROIT RD, ROCKY RIVER, OH 44116

OVERALL DIMENSIONS **8' - 2" W x 2' - 8" H x 3" D**

SQUARE FOOTAGE **21.8 ft.²**

SCALE
AS NOTED

DATE
02/10/25

PROJECT MANAGER
ANNA A.

PAGE DESCRIPTION
**EAST ELEVATION
MOCK-UP ON SITE - NIGHT**

PAGE NO.
5 OF 9

ii. OVERVIEW Channel letters w/ neon on backer panel for SOUTH elevation

SOUTH ELEVATION
FRONT VIEW



MATERIALS

A. "Westsiders" channel letters

RETURNS: 5" .040 aluminum, painted MP20504 Saturn Gold Metallic (exterior) & MP08514 Enzo Red (interior) w/ false baffles for neon glass

BACKS: .063 aluminum

FACES: 3/16" clear acrylic

TRIM: 1" painted MP20504 Saturn Gold Metallic

GLASS: 13mm Ruby Red

ELECTRICAL: 30ma outdoor transformer(s) in backer panel;
Disconnect switch & drain holes

MOUNTING: Flush stud mount to backer panel

B. "BAR & RESTAURANT" capsule

RETURNS: 5" .040 aluminum, painted SW 6994 Greenblack (interior & exterior) w/ false baffles for neon glass

BACK: .063 aluminum

FACE: 3/16" clear acrylic

TRIM: 1" painted SW 6994 Greenblack

GLASS: 13mm Ruby Red

ELECTRICAL: 30ma outdoor transformer(s) in backer panel;
Disconnect switch & drain holes

MOUNTING: Flush stud mount to backer panel

C. Backer panel

BODY: 3" deep aluminum frame fabrication, skinned w/ aluminum, painted SW 6994 Greenblack

MOUNTING: Bolted flush to existing rail structure on roof

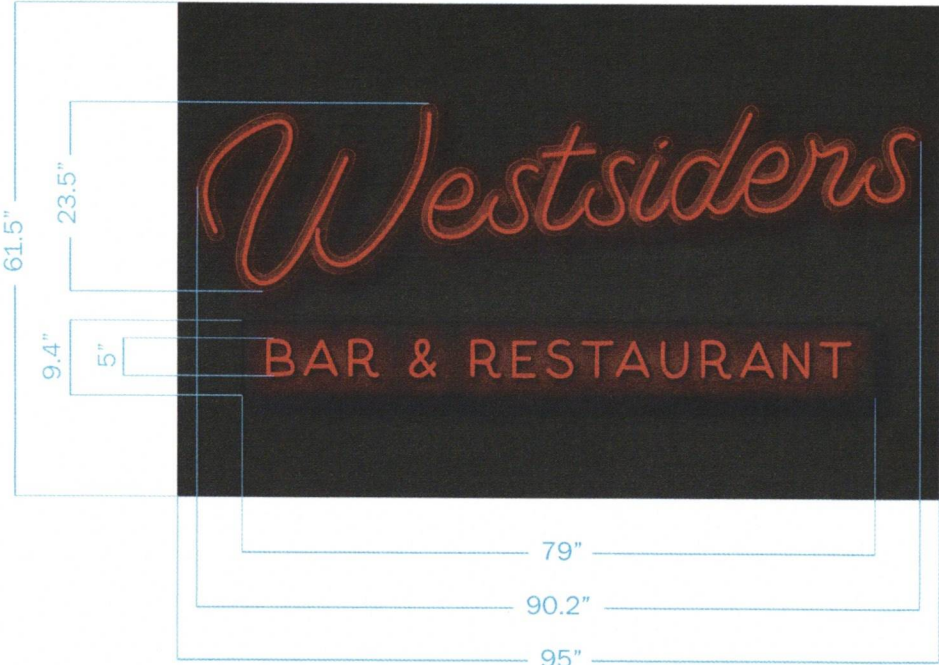
COLORS

SW 6994
Greenblack

MP08514
Enzo Red

MP20504
Saturn Gold Met.

Ruby Red



***ALL MEASUREMENTS & MATERIALS ARE APPROXIMATE FOR PURPOSES OF VISUALIZATION, AND ARE SUBJECT TO CHANGE IF NECESSARY.**

These drawings are the exclusive property of Ellen Benjamin. They represent chargeable time spent. They are submitted for your personal use under the agreement that the use of this design in its entirety or any part will not be reproduced, copied, lent or used for any purpose without written consent from Ellen Benjamin.

WESTSIDERS BAR & RESTAURANT
19880 DETROIT RD, ROCKY RIVER, OH 44116

OVERALL DIMENSIONS 7' - 11" W x 5' - 1.5" H x 8" D
SQUARE FOOTAGE 40.6 ft.²

SCALE
1 : 15

DATE
02/10/25

PROJECT MANAGER
ANNA A.

PAGE DESCRIPTION
SOUTH ELEVATION
FRONT VIEW

PAGE NO.
6 OF 9

ii. OVERVIEW Channel letters w/ neon on backer panel for SOUTH elevation

SOUTH ELEVATION
SIDE VIEWS



MATERIALS

A. "Westsiders" channel letters

RETURNS: 5" .040 aluminum, painted MP20504 Saturn Gold Metallic (exterior) & MP08514 Enzo Red (interior) w/ false baffles for neon glass

BACKS: .063 aluminum

FACES: 3/16" clear acrylic

TRIM: 1" painted MP20504 Saturn Gold Metallic

GLASS: 13mm Ruby Red

ELECTRICAL: 30ma outdoor transformer(s) in backer panel; Disconnect switch & drain holes

MOUNTING: Flush stud mount to backer panel

B. "BAR & RESTAURANT" capsule

RETURNS: 5" .040 aluminum, painted SW 6994 Greenblack (interior & exterior) w/ false baffles for neon glass

BACK: .063 aluminum

FACE: 3/16" clear acrylic

TRIM: 1" painted SW 6994 Greenblack

GLASS: 13mm Ruby Red

ELECTRICAL: 30ma outdoor transformer(s) in backer panel; Disconnect switch & drain holes

MOUNTING: Flush stud mount to backer panel

C. Backer panel

BODY: 3" deep aluminum frame fabrication, skinned w/ aluminum, painted SW 6994 Greenblack

MOUNTING: Bolted flush to existing rail structure on roof

COLORS

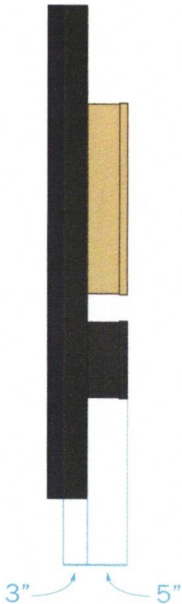
SW 6994
Greenblack

MP08514
Enzo Red

MP20504
Saturn Gold Met.

Ruby Red

DIRECT SIDE VIEW



ORTHOGRAPHIC VIEW



*ALL MEASUREMENTS & MATERIALS ARE APPROXIMATE FOR PURPOSES OF
VISUALIZATION, AND ARE SUBJECT TO CHANGE IF NECESSARY.

These drawings are the exclusive property of Ellen Benjamin. They represent chargeable time spent. They are submitted for your personal use under the agreement that the use of this design in its entirety or any part will not be reproduced, copied, lent or used for any purpose without written consent from Ellen Benjamin.

WESTSIDERS BAR & RESTAURANT
19880 DETROIT RD, ROCKY RIVER, OH 44116

OVERALL DIMENSIONS 7' - 11" W x 5' - 1.5" H x 8" D
SQUARE FOOTAGE 40.6 ft.²

SCALE
1 : 15

DATE
02/10/25

PROJECT MANAGER
ANNA A.

PAGE DESCRIPTION
SOUTH ELEVATION
SIDE VIEWS

PAGE NO.
7 OF 9

ii. OVERVIEW Channel letters w/ neon on backer panel for SOUTH elevation

SOUTH ELEVATION - MOCK-UP ON SITE - DAY



WESTSIDERS BAR & RESTAURANT
19880 DETROIT RD, ROCKY RIVER, OH 44116

OVERALL DIMENSIONS 7' - 11" W x 5' - 1.5" H x 8" D
SQUARE FOOTAGE 40.6 ft.²

SCALE
AS NOTED

DATE
02/10/25

PROJECT MANAGER
ANNA A.

PAGE DESCRIPTION
SOUTH ELEVATION
MOCK-UP ON SITE - DAY

PAGE NO.
8 OF 9

ii. OVERVIEW Channel letters w/ neon on backer panel for SOUTH elevation

SOUTH ELEVATION - MOCK-UP ON SITE - NIGHT



*ALL MEASUREMENTS & MATERIALS ARE APPROXIMATE FOR PURPOSES OF VISUALIZATION, AND ARE SUBJECT TO CHANGE IF NECESSARY.

These drawings are the exclusive property of Ellen Benjamin. They represent chargeable time spent. They are submitted for your personal use under the agreement that the use of this design in its entirety or any part will not be reproduced, copied, lent or used for any purpose without written consent from Ellen Benjamin.

WESTSIDERS BAR & RESTAURANT 19880 DETROIT RD, ROCKY RIVER, OH 44116	OVERALL DIMENSIONS 7' - 11" W x 5' - 1.5" H x 8" D SQUARE FOOTAGE 40.6 ft.²	SCALE AS NOTED	DATE 02/10/25	PROJECT MANAGER ANNA A.	PAGE DESCRIPTION SOUTH ELEVATION MOCK-UP ON SITE - NIGHT	PAGE NO. 9 OF 9
---	---	------------------------------	-----------------------------	---------------------------------------	--	-------------------------------