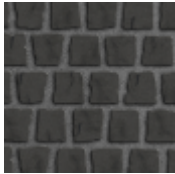


PRODUCT LINE: NORDIC COBBLE®

3 5/8 X 3 3/4 X 2 3/8" (89.9 X 94 X 60MM)



3 5/8x3 3/4" (89.9x94mm)



Color

Dark Charcoal

Finish

Smooth Premier

Product Line

NORDIC COBBLE®

APPLICATION(S)



Light Duty Vehicular



Heavy Duty Vehicular



Permeable

Sustainable Design, Stormwater retention, Low Impact Design, Rainwater Harvesting, Increased Lot Ratio



Pedestrian

TECHNOLOGIES

EnduraColor

The refined surface of Unilock EnduraColor products is achieved with a two step manufacturing process that combines a base of coarser aggregates for a stronger foundation, with concentrated color and wear-resistant finer aggregates on top. This process protects the surface from the appearance of fading over time because the top layer prevents large, lighter color aggregates from ever showing through.

PRODUCT INFORMATION

Nordic Cobble brings a modern finish to a historic paving staple, hand-cut granite cobbles. Randomized cobble "faces" can create circular fans or curves, grid patterning and border designs.

PRODUCT INFORMATION (CONT'D)

SPECIAL NOTE:

Recommended Base Stabilization – one layer of DriveGrid™ stabilization grid between subgrade and base material. Recommended depth 8" to 10" below pavers for maximum stability and performance. Use under Standard Base or Permeable Base.

Standard Base – Min. 6" – 8" of ¾" Crusher Run gravel (any road base standard in accordance with ASTM-D2940) compacted to 98% Standard Proctor Density (SPD).

Standard Bedding Course – 1" thick of coarse sand– in accordance with ASTM-D2940 screeded over base.

Alternative Permeable Base – Min. 6" – 8" of ¾" clear open-graded stone compacted to achieve full particle lock-up and consolidation. (Clear open-graded does not compact but does consolidate slightly by rattling the particles together.)

Alternative Permeable Bedding Course – 1" thick of 1/4" clear open-graded chip stone – (ASTM No. 8) screeded over base.

Jointing Material and Joint Stabilization

All sands must meet ASTM C144 or C33 Specifications. For best appearance and optimal performance,, keep jointing materials approximately 1/8" below the chamfer (bevel edge) of the paver.

Good Option: Ordinary sharp jointing sand in accordance with ASTM C144 or C33. (Common name: Concrete Sand)

Best Option: Any polymeric sand or ordinary concrete sand stabilized by a water-based or solvent-based joint sand stabilizer sealer. Always follow manufacturer's application specifications and requirements.

Permeable Option: For permeable applications use ASTM No. 8 or 9 for filling paver joints.

Handling – This product has no special handling requirements.

Edge Restraint - Always install an edge restraint around the perimeter of any paver installation not restrained by building structures. Spike-in edge restraints come in plastic and metal and work well for most applications. A concrete curb or a sub-surface concrete wedge can also be installed to retain the edge.

Paver Compaction - Nordic Cobble has a larger joint than most paver styles, therefore it is recommended that you pre-fill the joints halfway up the joint with jointing material prior to surface compaction. Use a plate compactor outfitted with a protective polymer pad or use a rubber-roller compactor for the final compaction.

The Americans with Disabilities Act Accessibility Guidelines (ADAAG) provides measurable criteria to determine compliance, not individual product evaluation. Gaps, joints or openings, greater than ½" horizontal and ¼" vertical should be avoided as they can disrupt wheelchair maneuvering (United States Access Board – Guidelines and Standards).



PRODUCT SELECTION

PRODUCT LINE: NORDIC COBBLE®

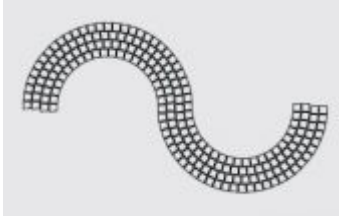
3 5/8 X 3 3/4 X 2 3/8" (89.9 X 94 X 60MM)

	TRAPEZOID
SQ FT PER BUNDLE	98.25
SQ FT PER LAYER	9.83
LAYERS PER BUNDLE	10
LIN FT PER SQ.FT. - SOLDIER	3.39
LIN FT PER BUNDLE - SOLDIER	333.07
UNITS PER SQ FT	10.99
UNITS PER BUNDLE	1080
UNITS PER LAYER	108
LBS PER LAYER	298.47
LBS PER BUNDLE	2984.73
LBS PER UNIT	2.76
LIN FT PER LAYER - SOLDIER	33.31
LIN FT PER UNIT - SOLDIER	0.31
SQ FT PER UNIT	0.09

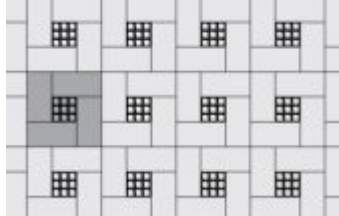
PRODUCT LINE: NORDIC COBBLE®

3 5/8 X 3 3/4 X 2 3/8" (89.9 X 94 X 60MM)

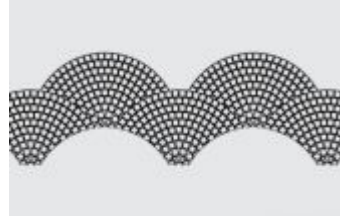
LAYING PATTERNS



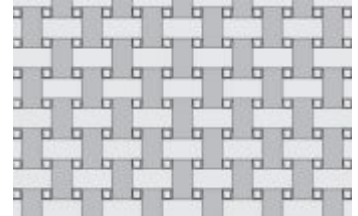
NORDICCOBBLE WAVE PATTERN



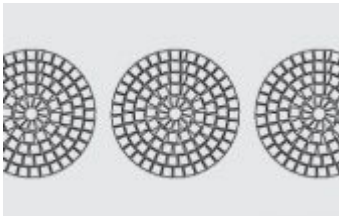
NORDICCOBBLE PATTERN A



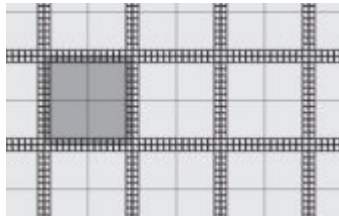
NORDICCOBBLE FAN PATTERN



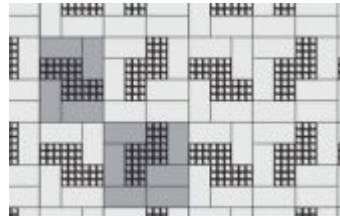
NORDICCOBBLE PATTERN E



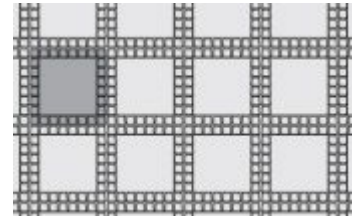
NORDICCOBBLE CIRCLE PATTERN



NORDICCOBBLE PATTERN D



NORDICCOBBLE PATTERN F



NORDICCOBBLE PATTERN C



NORDICCOBBLE PATTERN B

PRICE RANGE

