



NOTICE:  
DESIGN AND CONSTRUCTION DOCUMENTS AS INSTRUMENTS OF SERVICE ARE GIVEN IN CONFIDENCE AND REMAIN THE PROPERTY OF FMC ARCHITECTS LLC. THE USE OF THE DESIGN AND THESE CONSTRUCTION DOCUMENTS FOR PURPOSES OTHER THAN THE SPECIFIC PROJECT NAMED HEREIN IS STRICTLY PROHIBITED WITHOUT THE EXPRESSED WRITTEN CONSENT OF FMC ARCHITECTS LLC.  
COPYRIGHT © 2025.

**Callie's Pilates**  
19350 Detroit Rd Suite D  
Rocky River, OH 44116

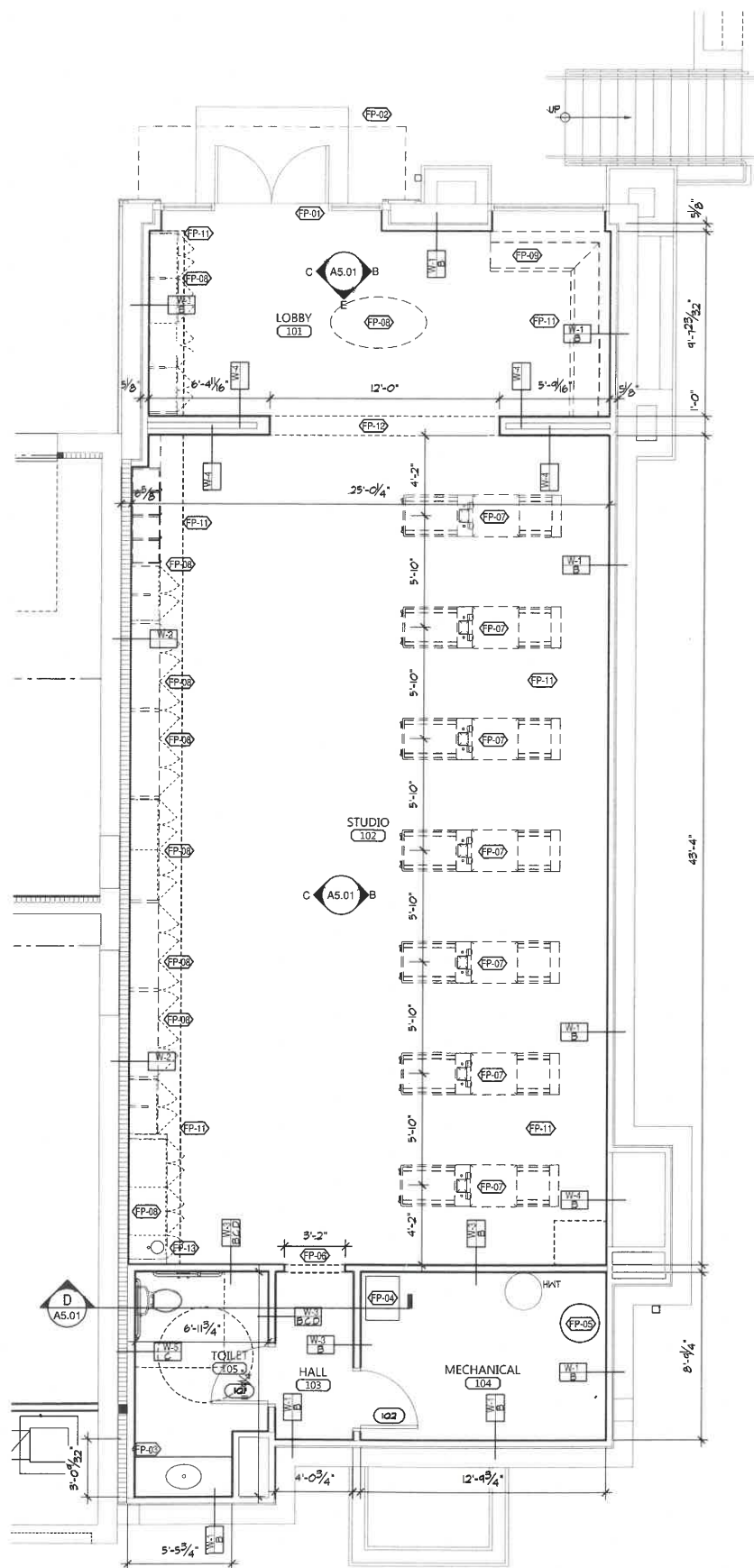
- Design
- Approval
- Permit 02/03/2025
- Bid
- Construction

Revisions:  
No. / Date/Description

Project No. 25128.10  
Drawn By: FMC/PWB  
Checked By: FMC

Sheet Title:  
FLOOR PLAN -  
TENANT SPACE

Sheet No:  
**A1.01**



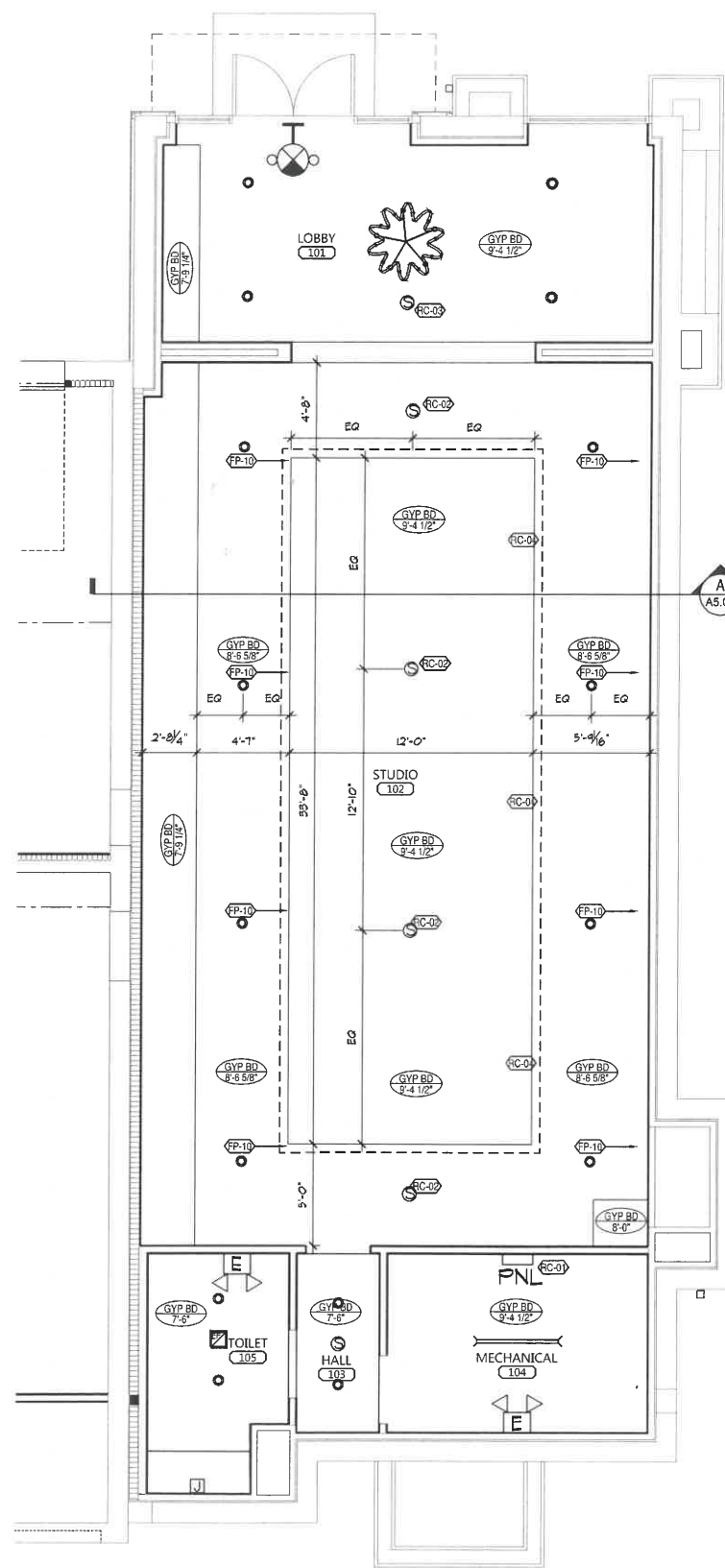
1 LOWER LEVEL FLOOR PLAN - TENANT SPACE  
SCALE: 1/4"=1'-0"

**FLOOR PLAN NOTES**

- FP-01 EXISTING ALUMINUM STOREFRONT SYSTEM TO REMAIN, EGRESS HARDWARE IS EXISTING.
- FP-02 EXISTING EXTERIOR CANOPY ABOVE SHOWN DASHED.
- FP-03 NEW HOT WATER TANK WITH SERVICE SINK BELOW. SEE PLUMBING DRAWINGS.
- FP-04 NEW FURNACE. SEE MECHANICAL DRAWINGS.
- FP-05 EXISTING LIFT STATION.
- FP-06 NEW ARCHED GYP BD OPENING, HEAD AT 7'-0" AFF.
- FP-07 NEW EQUIPMENT BY TENANT.
- FP-08 NEW CABINETS BY TENANT.
- FP-09 NEW BENCH SEATING BY TENANT.
- FP-10 ALIGN LIGHT CENTER WITH WD WALL PANEL CENTER.
- FP-11 NEW GYP BD SOFFIT ABOVE, SEE REFLECTED CEILING PLAN.
- FP-12 NEW GYP BD OPENING, HEAD AT 8'-0" AFF WITH 18" RADIUS CORNERS.
- FP-13 BOTTLE FILLER FAUCET WITH SINK. ADDITIONAL BOTTLE WATER SHALL BE AVAILABLE IN THE UNDER COUNTER REFRIGERATOR.

**GENERAL NOTES**

1. ALL NET WALLS SHALL HAVE WATER-RESISTANT GYP BD. THIS SUPERCEDES WALL TYPES.
2. PROVIDE BLOCKING FOR ALL TOILET ROOM ACCESSORIES AND ALL MILLWORK.
3. ALL NEW GYP BD WALLS SHALL GET LEVEL 4 FINISH.
4. ALL FURNITURE BY TENANT.
5. ALL WALLS IN OFFICE. SEE WALL TYPE M-1/1.01.
6. ALL WALLS IN WAREHOUSE (EXCEPT PUMP ROOM) SEE 4 AND 5 ON A1.01.
7. USE M-2 FOR ALL TOILET ROOM WALLS M-2/1.01.



2 LOWER LEVEL REFLECTED CEILING PLAN - TENANT SPACE  
SCALE: 1/4"=1'-0"

**CEILING PLAN NOTES**

- RC-01 NEW ELECTRICAL PANEL. SEE ELECTRICAL DRAWINGS.
- RC-02 LOW VOLTAGE SPEAKER BY TENANT.
- RC-03 PROVIDE 1 HOUR RATED ENCLOSURE FOR CEILING SPEAKER. TENMAT MODEL NO FF104-FRSC.
- RC-04 LED STRIP SHOWN DASHED. SEE CEILING DETAIL AND ELECTRICAL DRAWINGS.

**CEILING LEGEND**

- ACT-1 ARMSTRONG STANDARD FIGURED, NON-DIRECTIONAL 2'x4' 50 TILE AND 3/8" STANDARD WHITE GRID SYSTEM, EDGE HOLDING, TYPICAL UNLESS NOTED OTHERWISE.
- GYP BD GYP BD SOFFIT/BULKHEAD.

CEILING LAYOUT AND/OR REQUIREMENT FOR CLEAN ACT SHALL BE MODIFIED BY FUTURE TENANT FROM THEIR FUTURE SUBMITTAL TO CITY